



COUNTY OF SAN LUIS OBISPO HEALTH AGENCY PUBLIC HEALTH LABORATORY

Phone: (805) 781-5507 | Fax: (805) 781-1023

www.sloPublicHealth.org/Lab

SPECIMEN COLLECTION & TRANSPORT INSTRUCTIONS

Viral Transport Collection Kit – For Coronavirus SARS-CoV-2 Testing

Test: 6850

SPECIMEN STORAGE & TRANSPORT

Temperature: refrigerated (2 °C – 8 °C / 35.6 °F – 46.4 °F)

Maximum Holding Time: 72 hours (time from collection to test set-up in laboratory)

Exceptions: for any exceptions to collection, storage or transport conditions, please call lab first to discuss.

KIT STORAGE

Temperature: This Viral Transport Medium must be **REFRIGERATED AT ALL TIMES**. (2 °C – 8 °C / 35.6 °F – 46.4 °F) **This kit must be stored in the refrigerator, even prior to use.** (If saline is used as the transport medium the saline does not need to be stored in the fridge prior to specimen collection. All specimens need to be stored in the refrigerator after specimen collection.)

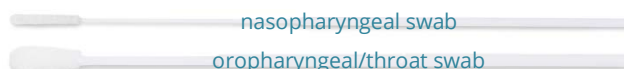
Expiration: kit must be used prior to expiration date listed on kit label

ACCEPTABLE SPECIMEN TYPES:

Acceptable Specimen Types in VTM or Saline	Corona SARS-CoV-2
Nasopharyngeal Swab (preferred)	✓
Nasal swab	✓
Oropharyngeal Swab	✓
Bronchoalveolar Lavage	*
Nasopharyngeal & Oropharyngeal Swabs (in one vial)	*
Nasopharyngeal Aspirates or Washes	*
Oropharyngeal Aspirates or Washes Bronchial or Nasal Wash	*
Tracheal Aspirates	*
Sputum	✓

* can be tested but not preferred

collection swabs & viral transport medium (VTM) tube



TEST ORDER OPTIONS FOR THIS KIT

6850: SARS-CoV-2 PCR

SPECIMEN COLLECTION & TRANSPORT INSTRUCTIONS

Viral Transport Collection Kit – For Coronavirus SARS-CoV-2 Testing

Test: 6850

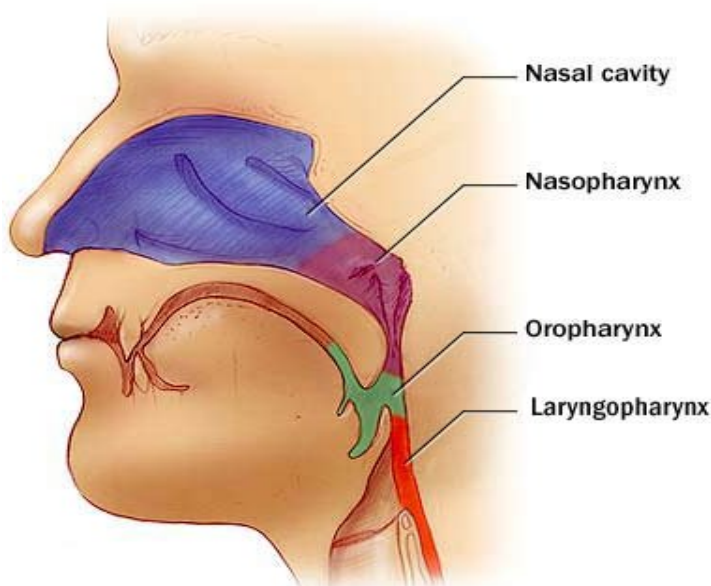
REJECTION CRITERIA

- Calcium alginate or wooden shaft swabs, unrefrigerated specimens
- holding time greater than 72 hours at refrigerator temperature
- specimen container not labeled
- specimen container has leaked or is not sealed properly
- swab specimens that are missing the swab or contain the wrong swab

SPECIMEN COLLECTION - NASOPHARYNGEAL SWAB

1. Collect respiratory specimen during acute phase of illness.

- a. Ask the patient to blow their nose to clear their nasal passage and tilt the patient's head backwards.
- b. Swiftly insert swab into one nostril straight back (not upwards) at a depth equal to distance from nostrils to outer opening of the ear (see image on backside of page).
- c. Firmly rotate the swab up to 5 times and hold in place for 5-10 seconds to collect epithelial cells.
- d. Repeat with the other nostril using the same swab.



2. Snap the swab at the scored breakpoint line; place swab into VTM tube; close the tube tightly.

3. Label the tube with the patient's name, date of birth, and the date/time of collection.

4. Place the collection tube inside the zippered portion of the biohazard specimen bag and seal tightly.

5. Fill out the requisition form completely. Fold it in half once (no staples

please) and place in the outer pocket of the biohazard specimen bag (not inside the zippered pouch with the specimen).

6. Transport to the laboratory within 72 hours of collection (refrigerated).

