



# COVID-19 VACCINE TASK FORCE

**Meeting #3**  
**January 20, 2021**  
**10:30am - 12:00pm**

[www.slopublichealth.org](http://www.slopublichealth.org)

# Task Force Members

- Please write your name and your organization or sector you are representing in the chat.



# Meeting Process

- All meetings will be virtual and interactive; cameras on; mute until ready to speak
- Raise hand icon when ready to make comments/ask questions
- Consistent attendance by members; no delegates or subs
- Website: <https://www.emergencyslo.org/en/vaccines.aspx>
- Public comment via written comments; will be summarized and discussed with Task Force at subsequent meetings



# COVID-19 Vaccine Task Force Purpose

- Seek input and feedback on planning efforts
- Ensure vaccine is distributed and allocated equitably
- Consider barriers for vaccine distribution, especially for vulnerable members of the community

**Guiding Principles:** Safety. Equity. Transparency



# Public Comment Summary



HEALTH AGENCY  
PUBLIC HEALTH DEPARTMENT

[www.slopublichealth.org](http://www.slopublichealth.org)

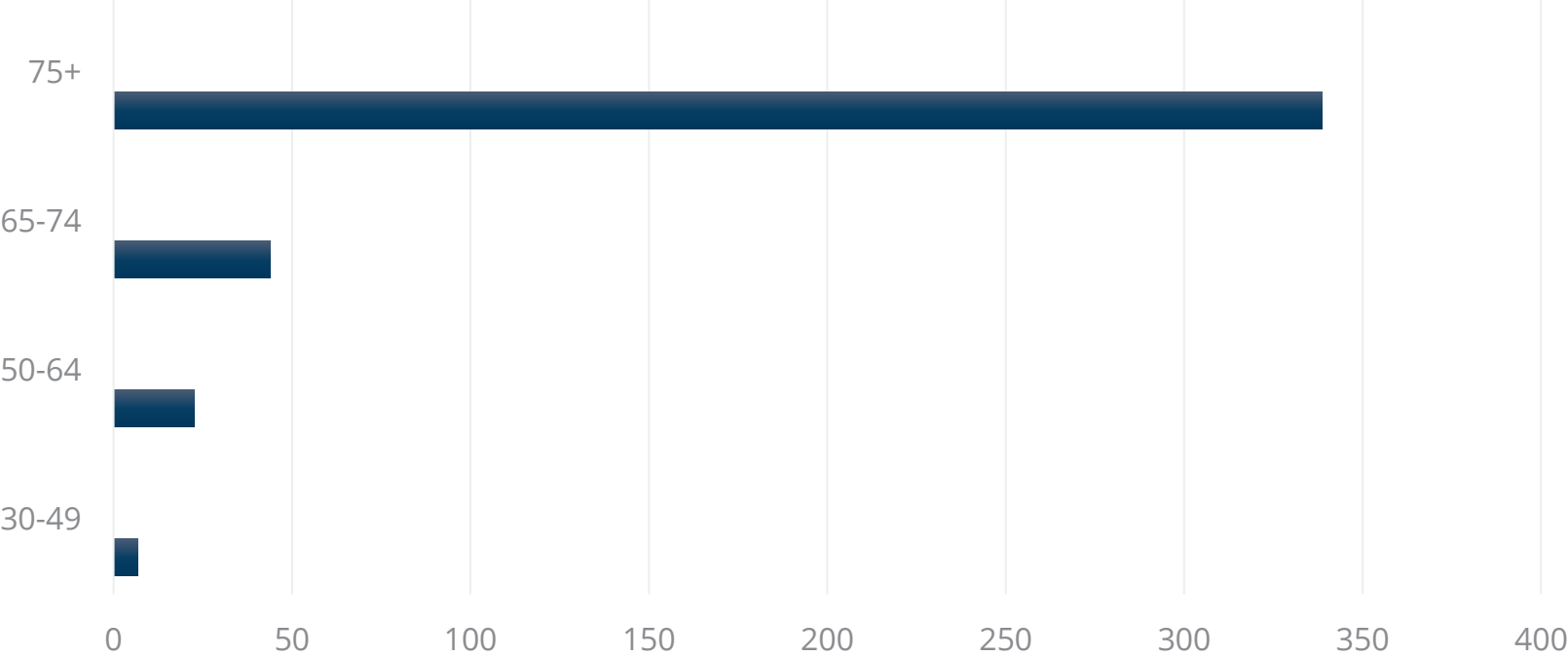
# COVID-19 Status in SLO County

<b>Total cases</b>	<b>15,614</b>
Recovered	12,923
New cases (72 hrs)	518
New cases (2 wks)	4,404
<b>Hospitalizations</b>	<b>51</b>
General	44
Intensive Care	10
<b>Deaths</b>	<b>136</b>
Pending	32

Data from 1/18/21 11am



# SLO County Rate of Death by Age



■ Rate of deaths adjusted for % of SLO County population

Data from 1.18.21 11am <https://www.emergencyslo.org/en/positive-case-details.aspx>



# Vaccine Allocation



## Federal Pharmacy Partnership

Skilled Nursing Facilities, Long Term Care



## Hospitals and State Facilities

Dignity, Tenet, CMC, ASH



## Public Health Mass Vaccination sites

SLO, Paso Robles, AG coming soon







## Private Provider PODs

Pharmacies, Doctor's Offices, Employers





# Vaccine Administration

	# of Sites	# Doses Received	# Doses Administered	Future Planning
	Fed Pharmacy Partnership 169	2000 (est.)	1000+	Continue until all LTC and SNF residents and staff are vaccinated
	Hospitals and State Facilities 7	5-6000 (est.)	4000 (est.)	Continue vaccinating staff and residents during appropriate phase/tier
	Public Health Mass Vaccinations 2	17,250 (9,925 1 <sup>st</sup> 7,325 2 <sup>nd</sup> )	8,274 (7,146 1 <sup>st</sup> 1,324 2 <sup>nd</sup> )	Expand to 3 sites across the County, 3,000 doses/day
	Private Provider PODs 6	1,110	88	Doc offices, pharmacies, large employers currently enrolling as a POD



# Local Success

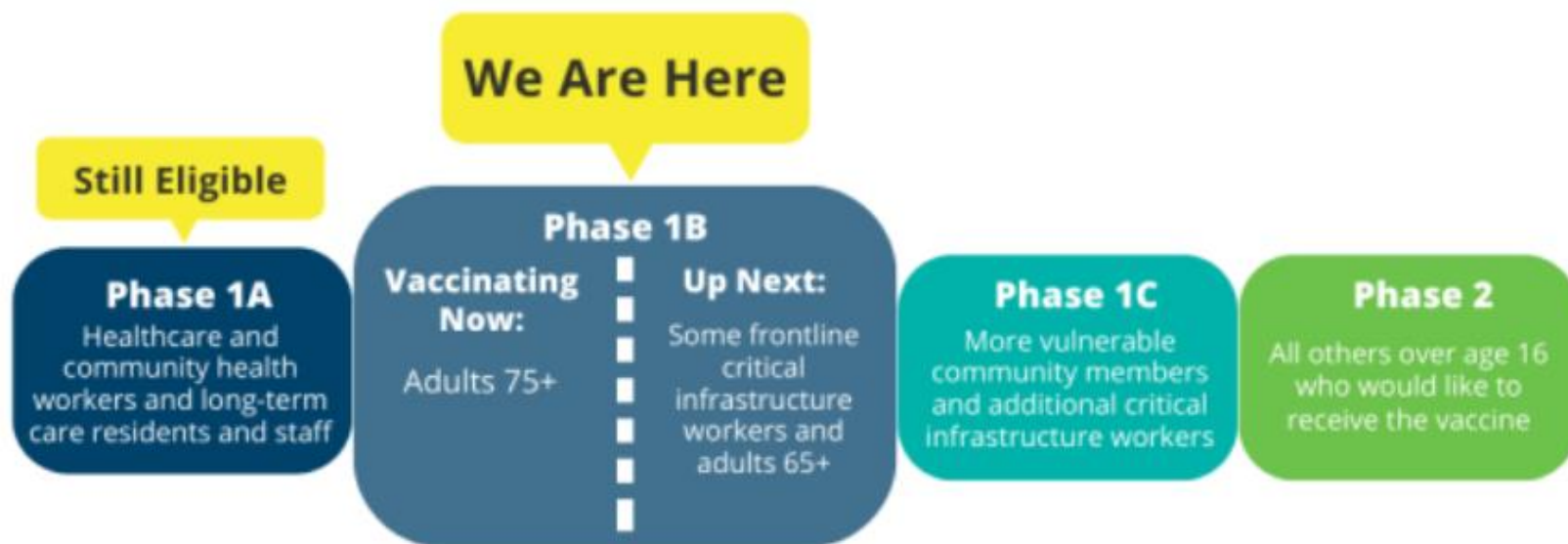
## Vaccine distribution average (first dose):

- Federal – 36%
- State – 26-31%
- San Luis Obispo County – 80%

Positivity rate in lowest HPI quartiles was equal to county average for the most recent reporting period (1/3 – 1/9)



# Vaccine Distribution in SLO County



# Phase 1b, Tier 1

- **People aged 75+**
- **People aged 65-74**
- **Those at risk of exposure at work in the following sectors:**
  - Education and Childcare
  - Emergency Services (Corrections staff)
  - Food and Agriculture (Food Bank)

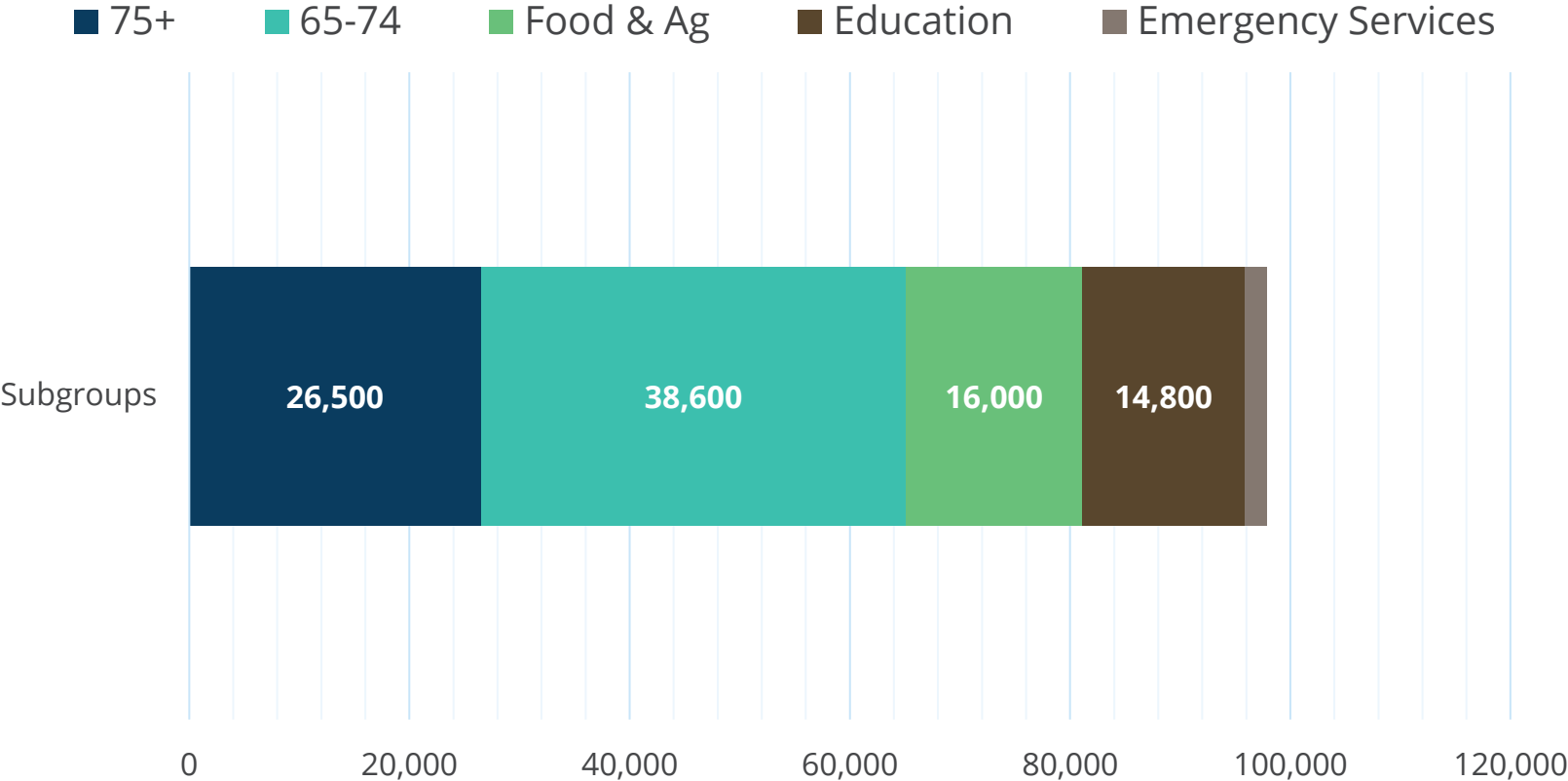
<https://covid19.ca.gov/vaccines/>



HEALTH AGENCY  
PUBLIC HEALTH DEPARTMENT

[www.slopublichealth.org](http://www.slopublichealth.org)

# Phase 1b, Tier 1 Census Approximations



# Local Considerations on Vaccine Distribution

**Barriers**

**Accessibility**

**Equity**



HEALTH AGENCY  
PUBLIC HEALTH DEPARTMENT

[www.slopublichealth.org](http://www.slopublichealth.org)

# Local Considerations for Future Subgroups

## Challenges and solutions for seniors in unlicensed facilities

- Unlicensed assisted living facilities

## Challenges and solutions in future part of Tier 1

- Farm workers

## Challenges and solutions in future part of Phase 1b

- People experiencing homelessness



# Discussion



HEALTH AGENCY  
PUBLIC HEALTH DEPARTMENT

[www.slopublichealth.org](http://www.slopublichealth.org)



# Vaccine Communications: Task Force Role

Two-way communication:

- Sharing information with your community (we'll provide talking points and sample messages)
- Letting us know about questions and rumors



# Closing Comments

- Next meetings
  - January 27, 2021 from 10:30am – 12:00pm
  - February 3, 2021 from 10:30am – 12:00pm
  - February 10, 2021 from 10:30am – 12:00pm
  - Future meetings TBD
- Meeting notes, slides and public comment form available at <https://www.recoverslo.org/en/slo-county-vaccine-taskforce.aspx>



# Thank you!



HEALTH AGENCY  
PUBLIC HEALTH DEPARTMENT

[www.slopublichealth.org](http://www.slopublichealth.org)