



COVID-19 VACCINE TASK FORCE

Meeting #5
February 10, 2021
10:30am – 12:00pm

www.slopublichealth.org

Meeting Process

- Consistent attendance by members; no delegates or subs
- Cameras on. Raise hand function. Mute until speaking



COVID-19 Vaccine Task Force Purpose

To ensure vaccine is prioritized fairly, the task force:

- Provides input and feedback on planning efforts
- Ensures vaccine is distributed and allocated equitably
- Considers barriers for vaccine distribution, especially for vulnerable members of the community



COVID-19 Status in SLO County

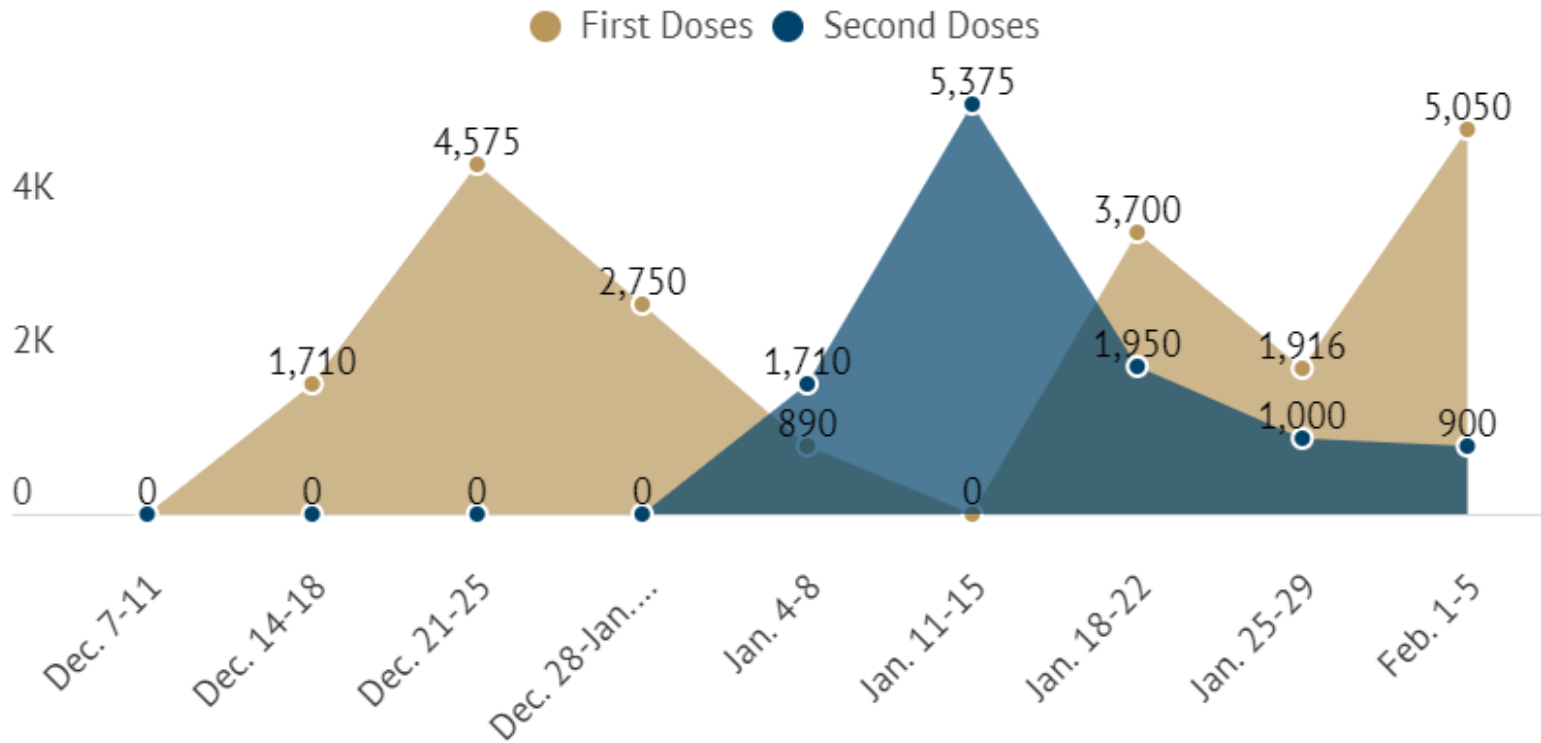
Total cases	18,684
Recovered	17,286
New cases (72 hrs)	230
New cases (2 wks)	1,744
Hospitalizations	46
General	35
Intensive Care	10
Deaths	199
Pending	20

Data from 2/9/21 11am



Public Health Mass Vaccinations

Weekly Vaccine Shipments to SLO County Public Health*



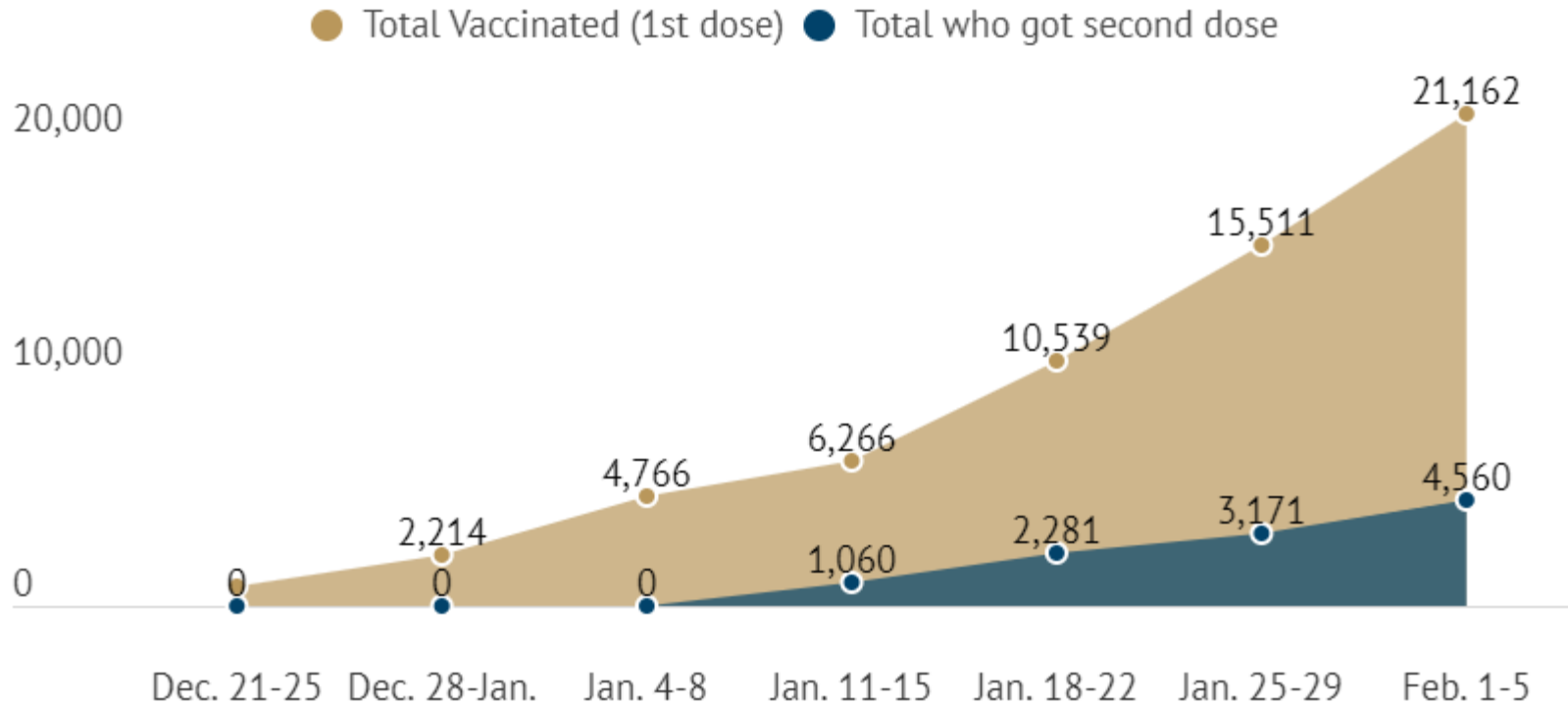
<https://www.recoverslo.org/en/detailed-vaccine-stats.aspx> Updated 2/8//21



HEALTH AGENCY
PUBLIC HEALTH DEPARTMENT

www.slopublichealth.org

Public Health Mass Vaccinations



<https://www.recoverslo.org/en/detailed-vaccine-stats.aspx> Updated 2.8.21



HEALTH AGENCY
PUBLIC HEALTH DEPARTMENT

www.slopublichealth.org

Total Doses Administered SLO County



COVID-19: Vaccine Dashboard



Administered

4,746,539



Delivered *

7,119,225



Shipped *

7,556,800

CDC Long Term Care Facility Pharmacy Partnership **



824,850
Delivered

834,600
Shipped

County

San Luis Obispo



Doses Administered by
County of Residence

San Luis Obispo 36,243

36,243

* Doses shipped and delivered include doses that were distributed as part of the CDC Long Term Care Facility Pharmacy Partnership (LTCF) program to vaccinate residents at California's Skilled Nursing Facilities and other congregate living facilities. Data files downloaded from Operation Warp Speed Tiberius platform at 9am daily.

** CDC Long Term Care Facility Pharmacy Partnership Doses are subset of the total.

Data Last Updated on 2/7/2021 11:59pm



HEALTH AGENCY
PUBLIC HEALTH DEPARTMENT

www.slopublichealth.org

Tools to Address Equity

- Targeted Outreach to the most vulnerable
- Partnership with Community Based Organizations
- Allocation based on a priority system for those without computer access
- Paid and earned multi-lingual media

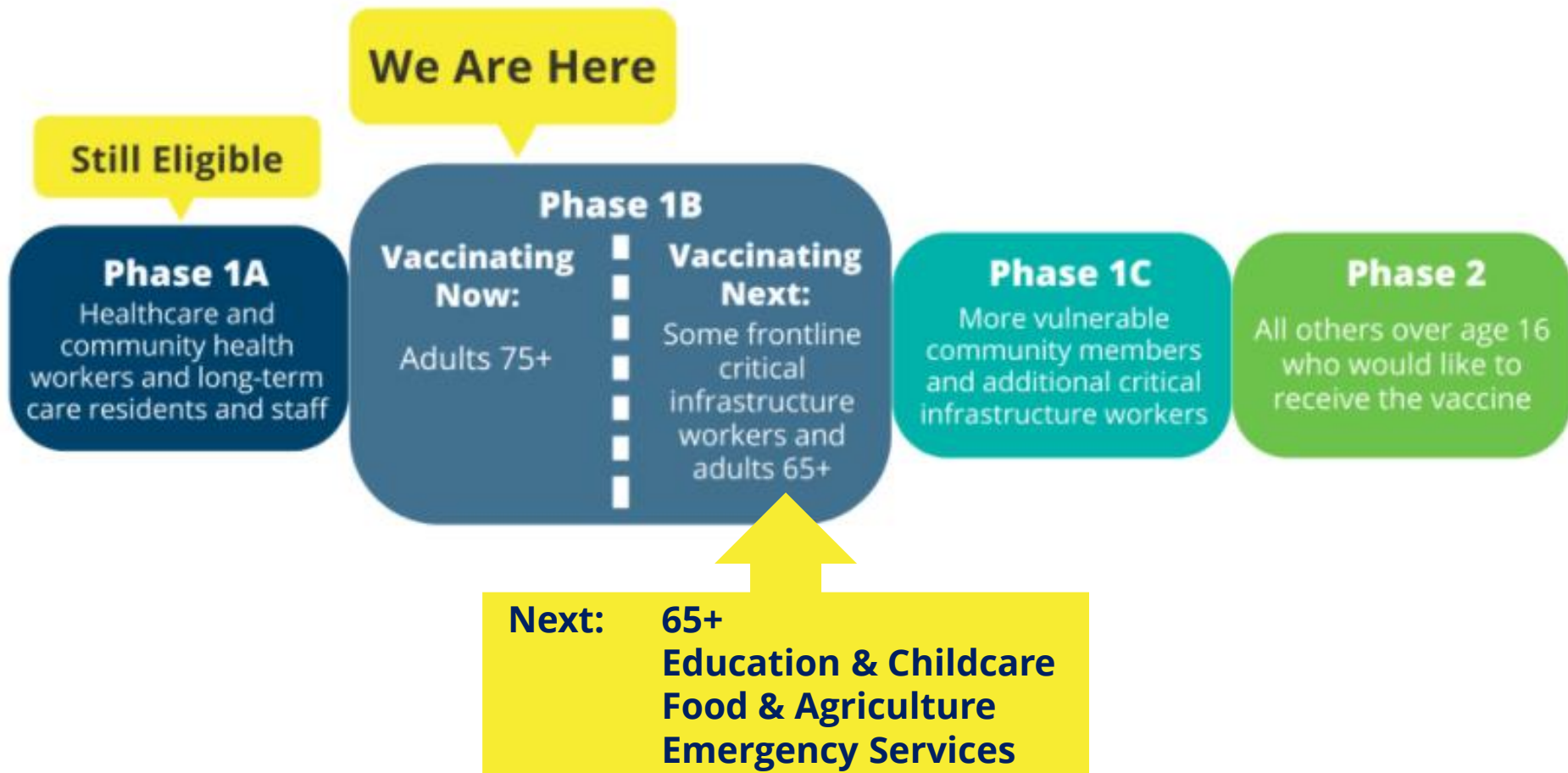


Small Group Vaccine Eligibility

- Tightening Excess Dose process at the end of each day
- Special Education teachers



Vaccine Distribution in SLO County



COUNTY
of SAN LUIS
OBISPO

HEALTH AGENCY
PUBLIC HEALTH DEPARTMENT

www.slopublichealth.org

CDPH Updated Vaccine Allocation Guidelines

February 4, 2021

Based on available supply, individuals described below are or will be eligible for COVID-19 vaccines:

- Phase 1A, all tiers*
- Phase 1B, Tier 1:
 - Persons 65 years of age and older
 - Sector populations: Education and Childcare**, Emergency Services*** , Food and Agriculture***.

Achieving equity

This age-based framework will be coupled with a vaccine distribution and engagement approach that prioritizes disproportionately impacted communities, settings, and populations to ensure those eligible for vaccines within these communities are more likely to receive it.

<https://www.cdph.ca.gov/Programs/CID/DCDC/Pages/COVID-19/VaccineAllocationGuidelines.aspx#>

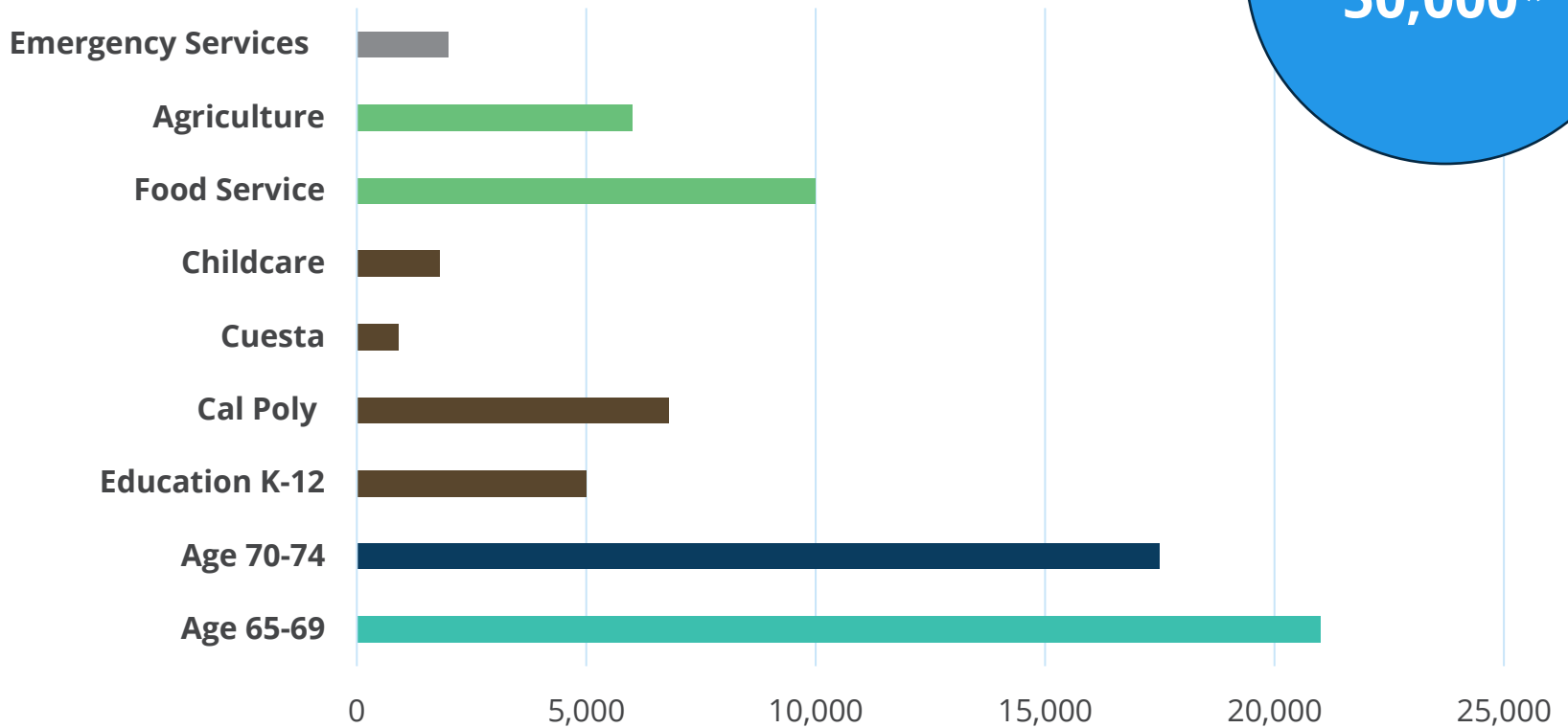


HEALTH AGENCY
PUBLIC HEALTH DEPARTMENT

www.slopublichealth.org

Phase 1b Census Forecasting (estimates)

Approx
50,000*



MyTurn



MyTurn.ca.gov



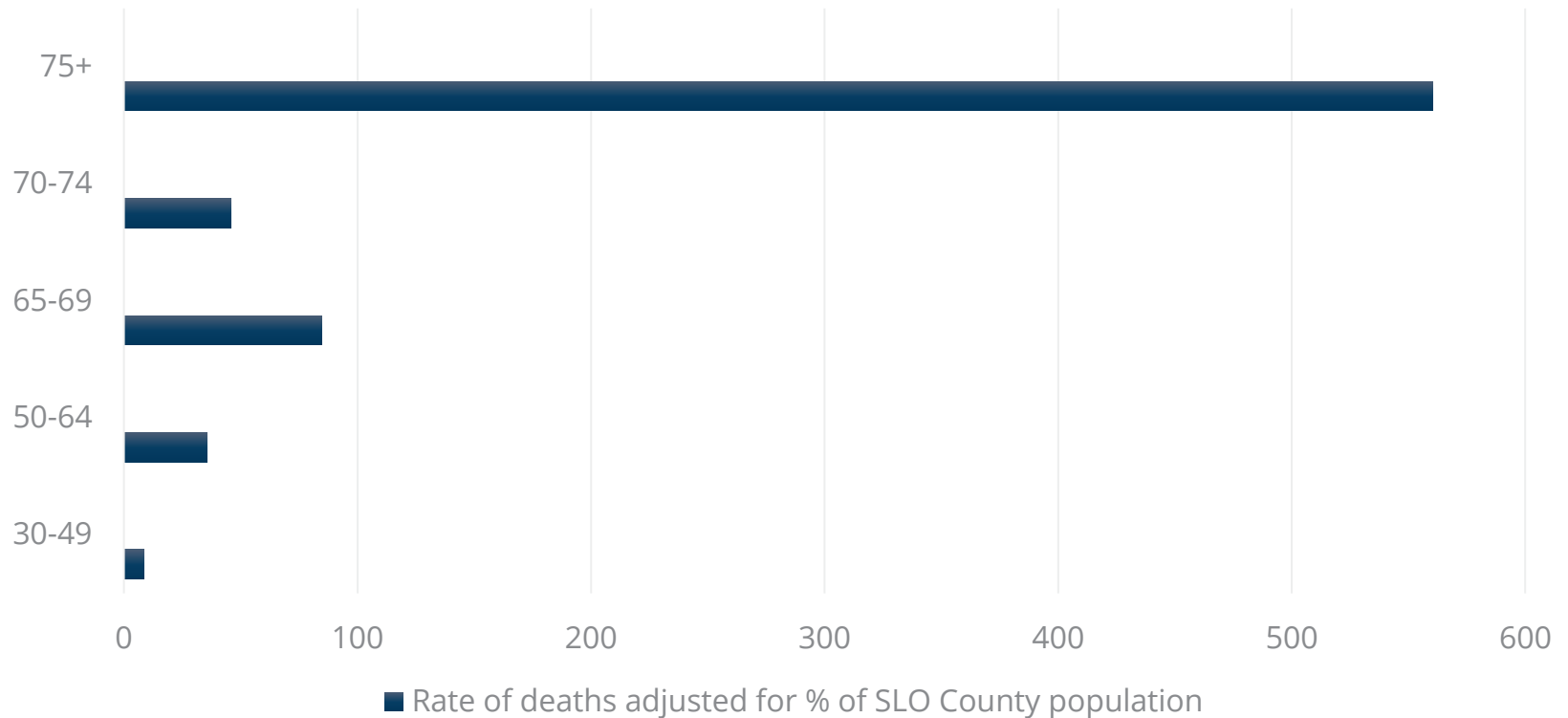
Sign up to get notified when it's your turn to get the COVID-19 vaccine.



HEALTH AGENCY
PUBLIC HEALTH DEPARTMENT

www.slopublichealth.org

COVID-19 Mortality Rates Highest in Older Adults – San Luis Obispo County



Data from 2.8.21 at 11am <https://www.emergencyslo.org/en/covid19.aspx>



HEALTH AGENCY
PUBLIC HEALTH DEPARTMENT

www.slopublichealth.org

Public Comment Summary



HEALTH AGENCY
PUBLIC HEALTH DEPARTMENT

www.slopublichealth.org

Local Considerations

- Diablo Canyon Power Plant Operators



Discussion



HEALTH AGENCY
PUBLIC HEALTH DEPARTMENT

www.slopublichealth.org

Vaccine Communications



HEALTH AGENCY
PUBLIC HEALTH DEPARTMENT

www.slopublichealth.org

Closing Comments

- Next meetings – 2nd & 4th Wednesdays of the month
 - February 24, 2021 from 10:30am – 12:00pm
 - March 10, 2021 from 10:30am – 12:00pm
 - March 24, 2021 from 10:30am – 12:00pm
 - April 14, 2021 from 10:30am – 12:00pm
 - April 28, 2021 from 10:30am – 12:00pm
- Future meetings TBD
- Meeting notes, slides and public comment form available at <https://www.recover slo.org/en/slo-county-vaccine-taskforce.aspx>



Thank you!



HEALTH AGENCY
PUBLIC HEALTH DEPARTMENT

www.slopublichealth.org