



COVID-19 VACCINE TASK FORCE

Meeting #6
February 24, 2021
10:30am – 12:00pm

www.slopublichealth.org

Meeting Process

- Consistent attendance by members; no delegates or subs
- Cameras on. Raise hand function. Mute until speaking



COVID-19 Vaccine Task Force Purpose

To ensure vaccine is prioritized fairly, the task force:

- Provides input and feedback on planning efforts
- Ensures vaccine is distributed and allocated equitably
- Considers barriers for vaccine distribution, especially for vulnerable members of the community



Public Comment Summary



HEALTH AGENCY
PUBLIC HEALTH DEPARTMENT

www.slopublichealth.org

Communications Update: Vaccine Champions

Focus on trusted local messengers through:

- Social media and newsletters
- Media
- Presentations and virtual events
- Personal conversations



COVID-19 Status in SLO County

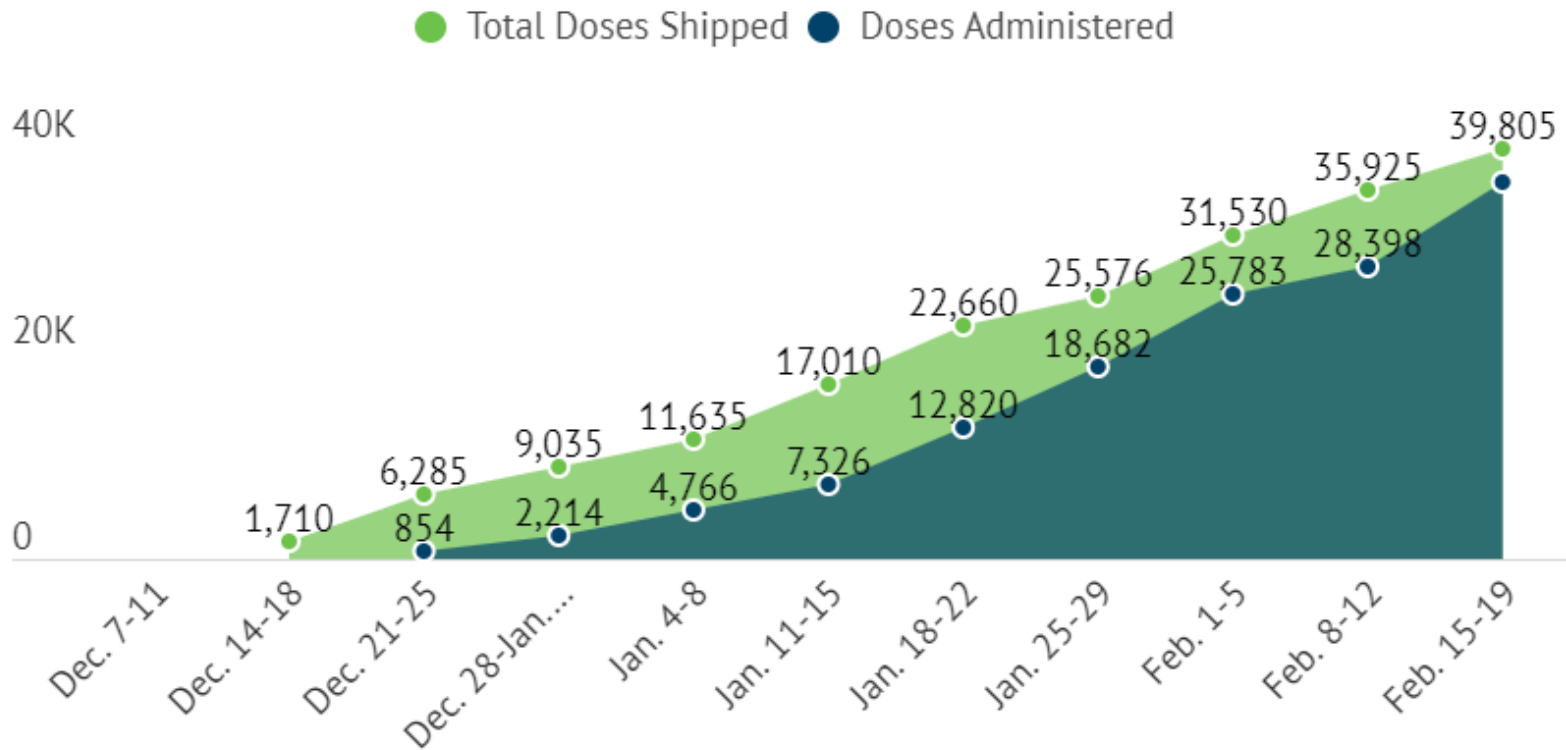
Total cases	19,458
Recovered	18,430
New cases (72 hrs)	128
New cases (2 wks)	875
Hospitalizations	25
General	17
Intensive Care	8
Deaths	220
Pending	1

Data from 2/22/21 11am



Public Health Mass Vaccinations

Weekly Vaccine Shipments to SLO County Public Health*



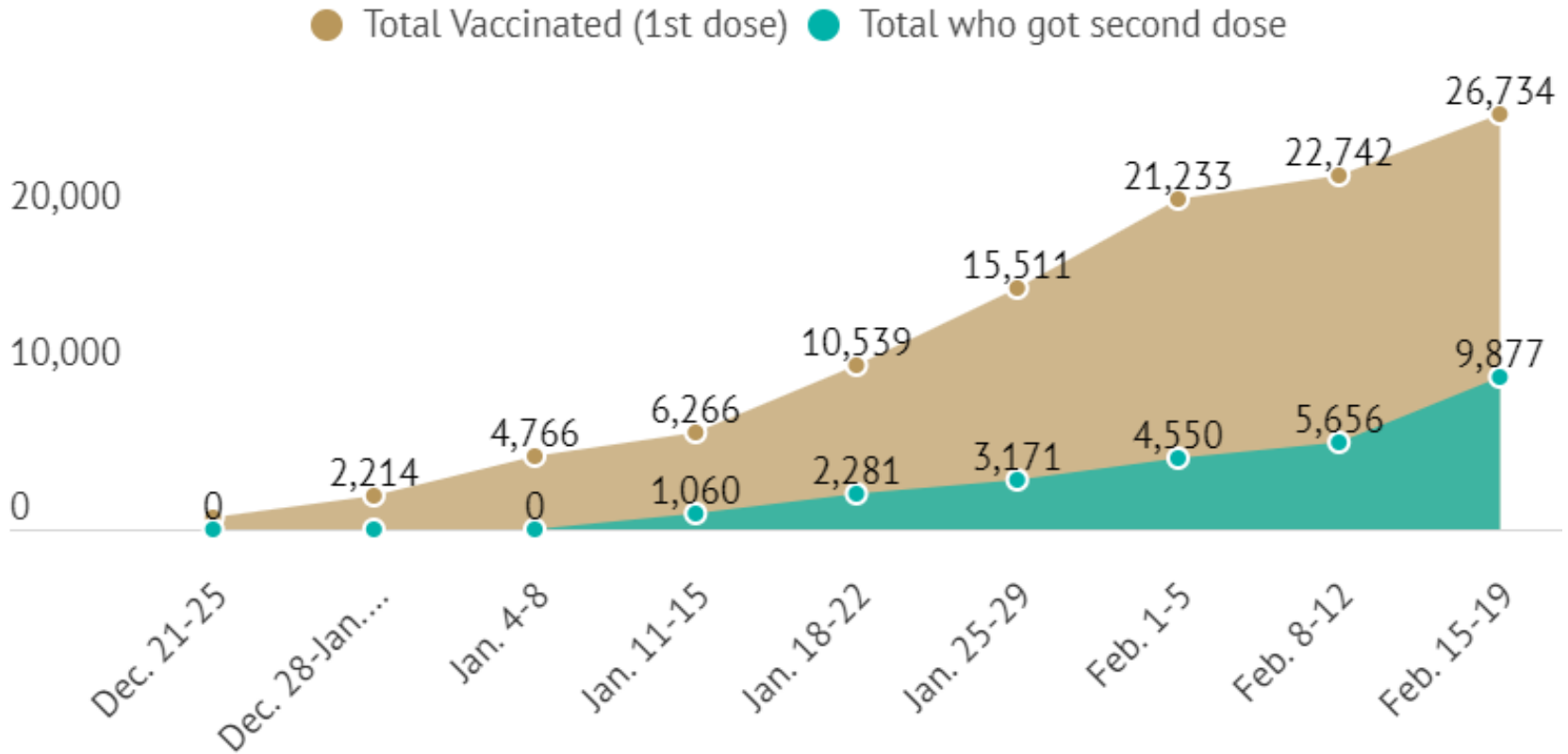
<https://www.recover slo.org/en/detailed-vaccine-stats.aspx> Updated 2/22/21



HEALTH AGENCY
PUBLIC HEALTH DEPARTMENT

www.slopublichealth.org

Public Health Mass Vaccinations



<https://www.recoverslo.org/en/detailed-vaccine-stats.aspx> Updated 2.22.21

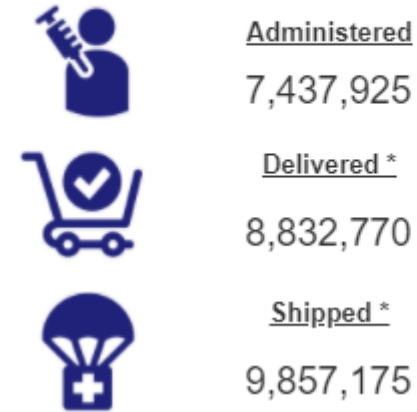


HEALTH AGENCY
PUBLIC HEALTH DEPARTMENT

www.slopublichealth.org

Total Doses Administered SLO County

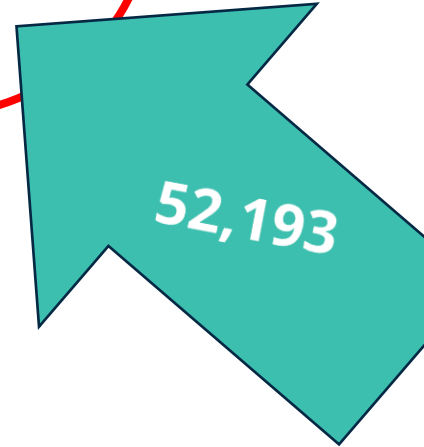
CA.GOV COVID-19: Vaccine Dashboard



County
San Luis Obispo

Doses Administered by
County of Residence

San Luis Obispo 52,193



CDC Pharmacy Partnership Programs **



* Doses shipped and delivered include doses that were distributed as part of the CDC Long Term Care Facility Pharmacy Partnership (LTCF) program to vaccinate residents at California's Skilled Nursing Facilities and other congregate living facilities, and Federal Retail Pharmacy Program. This does not include the following Federal entities: Indian Health Service, Department of Defense, U.S. Federal Bureau of Prisons, and Veterans Affairs. Data files downloaded from Operation Warp Speed Tiberius platform at 9am daily.

** CDC Pharmacy Partnership for Long-Term Care Facility (LTCF) Program and Federal Retail Pharmacy Program doses are a subset of the total.

Data: 2/21/2021 11:59pm | Posted: 2/22/2021



HEALTH AGENCY
PUBLIC HEALTH DEPARTMENT

www.slopublichealth.org

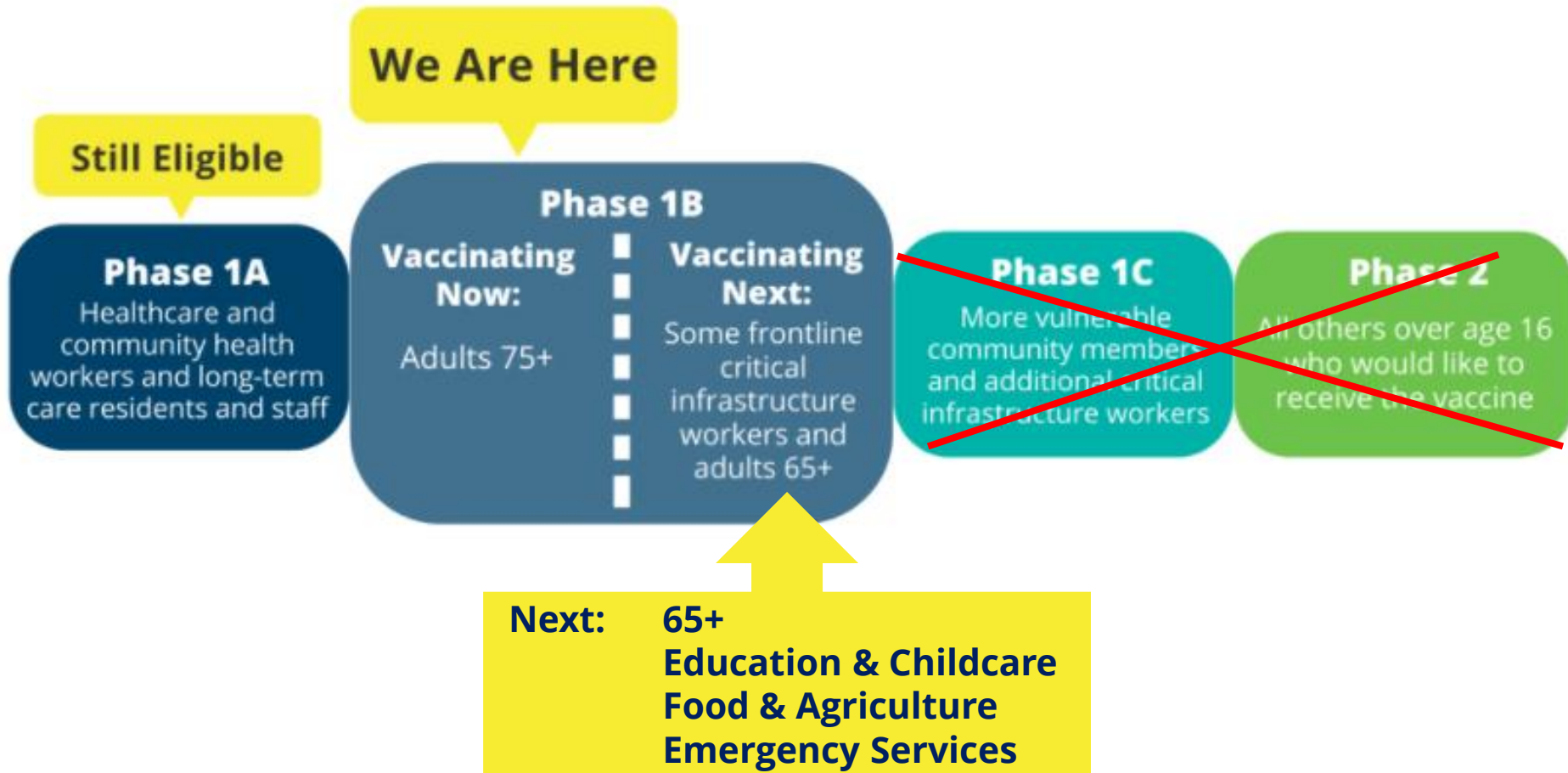
Local Race/Ethnicity Risk Data

Rate ratios compared to White, Non-Hispanic persons	Hispanic or Latinx persons
Cases	2.7x
Hospitalizations	2.1x
Crude Deaths*	1x

** Data as of 2.22.21, Deaths are not adjusted for age.*



Vaccine Distribution in SLO County



COUNTY
of SAN LUIS
OBISPO

HEALTH AGENCY
PUBLIC HEALTH DEPARTMENT

www.slopublichealth.org

Vaccine Prioritization (as supply allows)

- Phase 1a and Phase 1b Tier 1
- Starting March 15, Healthcare providers may vaccinate individuals age 16-64 who are at the highest risk for morbidity and mortality from COVID-19 as a result of:
 - Cancer
 - Chronic kidney disease (stage 4 and above)
 - Chronic pulmonary disease (oxygen dependent)
 - Down syndrome
 - Immunocompromised state from solid organ transplant
 - Pregnancy
 - Sickle cell disease
 - Heart conditions (excludes hypertension)
 - Severe obesity (Body Mass Index above 40kg/m²)
 - Type 2 diabetes mellitus (with hemoglobin A1c greater than 7.5%)



Vaccine Prioritization (as supply allows cont.)

OR...

If as a result of a developmental or other severe high-risk disability one or more of the following applies:

- Individual is likely to develop severe life-threatening illness or death from COVID-19 infection
- Acquiring COVID-19 will limit the individual's ability to receive ongoing care or services vital to their well-being and survival
- Providing adequate and timely COVID care will be particularly challenging due to individual's disability

Note: the list of eligible conditions is subject to change as additional scientific evidence is published and as CDPH obtains and analyzes additional state specific data.



Vaccine Registration System

- MyTurn timeline has been delayed
- Shifting to a lottery system with current booking process
 - Eligible residents can register their interest in getting a vaccine
 - Randomly selected group will be notified that they can book an appointment
- Goals:
 1. Reduce pressure on the public
 2. Increase equity



Local Considerations

How should the County move ahead with vaccinating the most at-risk sub-groups within the occupational sectors?

- Food and Agriculture
- Education and Childcare
- Emergency Services



Proposed Farm Worker Model

Plan Overview:

- Hold appointment slots for farmworkers (“Farmworker Friday”)
- Get farmworkers to vaccine site using employers & outreach groups
- Get started in March and improve process for future efforts (bias towards action)

Key Considerations:

- Significant segment of farmworker population does not want vaccine
- Goal is to lower barriers for workers and be pragmatic about approach
- Lots of liability issues for employers, but they will be key partners



Discussion



HEALTH AGENCY
PUBLIC HEALTH DEPARTMENT

www.slopublichealth.org

Closing Comments

- Next meetings – 2nd & 4th Wednesdays of the month
 - March 10, 2021 from 10:30am – 12:00pm
 - March 24, 2021 from 10:30am – 12:00pm
 - April 14, 2021 from 10:30am – 12:00pm
 - April 28, 2021 from 10:30am – 12:00pm
- Future meetings TBD
- Meeting notes, slides and public comment form available at <https://www.recover slo.org/en/slo-county-vaccine-taskforce.aspx>



Thank you!



HEALTH AGENCY
PUBLIC HEALTH DEPARTMENT

www.slopublichealth.org