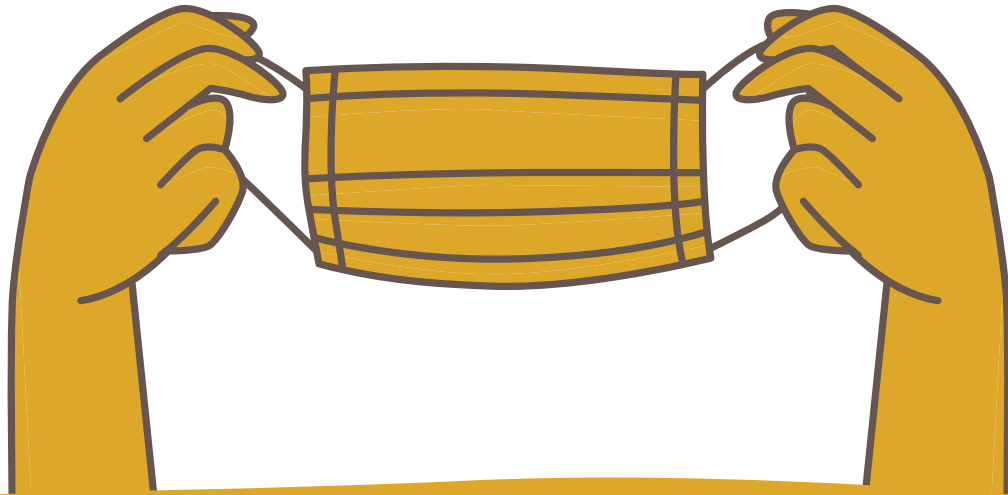


Please wear a face mask
if you are:

- ✓ Coughing, sneezing, or
- ✓ Feeling under the weather today, or
- ✓ Have been recently exposed to COVID-19, or
- ✓ Want to be extra courteous to our staff.

Thank you!



Por favor use cubrebocas si usted:

- ✓ Tiene tos, estornudos o
- ✓ Se siente mal hoy, o
- ✓ Ha estado expuesto recientemente a COVID-19, o
- ✓ Quiere ser más cortés con nuestro personal.

¡Gracias!