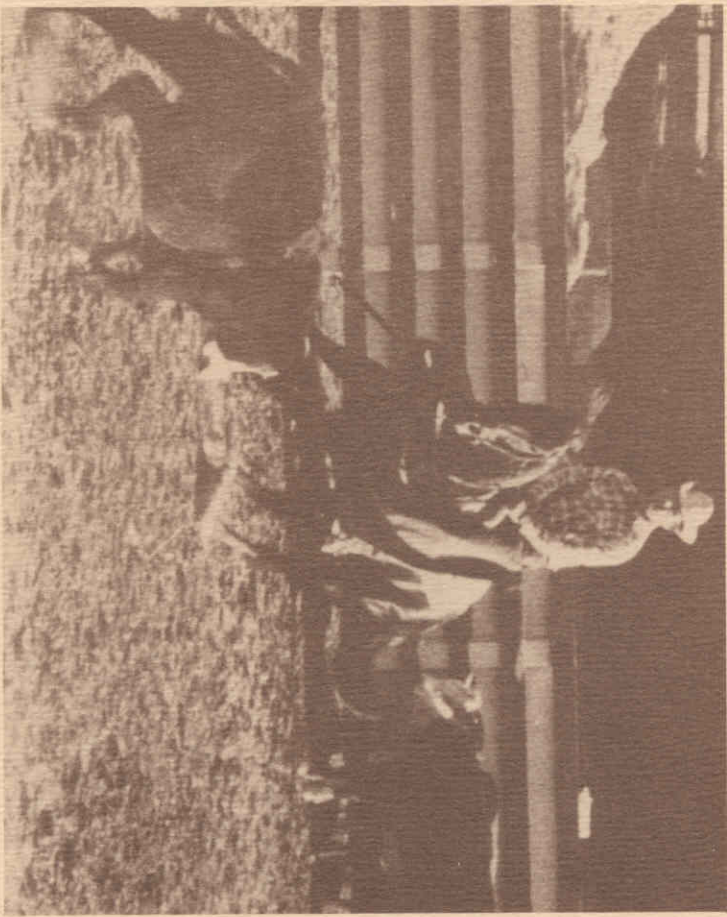


County Department of Agriculture
2156 Sierra Way
San Luis Obispo, CA 93401

San Luis Obispo County
AGRICULTURAL REPORT
1982



EARL R. KALAR,
Commissioner



COUNTY OF SAN LUIS OBISPO
 Department of Agriculture/Measurement Standards
 2156 SIERRA WAY, SUITE A • SAN LUIS OBISPO, CALIFORNIA 93401
 (805) 549-5910

TO: HONORABLE BOARD OF SUPERVISORS:

Jerry Diefenderfer, Chairman
 District One
 Ruth Brackett
 District Four
 William Coy
 District Two
 Jeff Jorgensen
 District Five
 Kurt Kupper
 District Three
 AND: Clare Berryhill, Director
 California Department of Food and Agriculture

Production value from San Luis Obispo County's farms and ranches for 1982 is estimated at 208 million dollars. This figure is based on gross receipts and does not reflect the ever increasing expenses of agribusiness. Most crop and livestock commodities experienced only modest increases or decreases in overall value.

The major increase in value and theme for the 1982 report, occurred with the horse industry. This resulted from a joint effort of the University Cooperative Extension Service, Farm Bureau, California State Polytechnic University, Commissioner's staff and ranchers. An intensive survey was successfully completed due to the professional efforts of many individuals updating procedures and values for an important and growing aspect of our county's diverse agriculture.

In an effort to better inform the public of our responsibilities, we have continued to summarize major departmental accomplishments and added a financial report this year. A viewing of the financial page will illustrate the small amount of discretionary spending available for local Agricultural Commissioner programs.

I wish to thank the agricultural community and my staff for their assistance in compiling this report. Also take note that our San Luis Obispo office has moved to Sierra Way. Please come by for a visit and tour.

Respectfully submitted,

Earl R. Kalar
 Earl R. Kalar
 Agricultural Commissioner

COVER: Jack Leslie, Associate Professor
 Animal Science
 California Polytechnic State
 University
 San Luis Obispo

Compiled by the Agricultural Commissioner's Staff:

ASSISTANT AGRICULTURAL COMMISSIONER

DEPUTY AGRICULTURAL COMMISSIONERS

Robert F. Lilley
 Stewart W. Williams

CLERICAL

Judy A. Noble
 Linda U. Leos
 Melaine M. Miller
 Donna D. Woeste

AGRICULTURAL INSPECTOR/BIOLOGISTS

Warren E. Howell
 Edward L. Ingram
 Pamela E. Schlatter
 Robert L. Hopkins
 Carolyn J. Irwin
 Janice M. Bise
 Gloria C. Shultz
 Carol L. Smithback

CROP	Year	Harvested Acreage	Per Acre	PRODUCTION		Per Unit	VALUE
				Total	Total		
Alfalfa Hay	1982	10,619	6.7	71,147	Ton	\$ 95.00	\$ 6,759,000
	1981	11,780	6.5	76,570	Ton	80.00	6,126,000
Barley	1982	94,800	1.5	142,200	Ton	120.00	17,064,000
	1981	90,000	1.3	117,000	Ton	130.00	15,210,000
Garbanzo	1982	3,401	8.0	27,208	Cwt	36.00	979,500
	1981	3,600	6.1	21,960	Cwt	42.00	922,000
Grain Hay	1982	14,000	3.2	44,800	Ton	65.00	2,912,000
	1981	12,000	2.1	25,200	Ton	50.00	1,260,000
Irrigated Pasture	1982	5,500			Acres	137.00	753,500
	1981	5,800			Acres	135.00	783,000
Safflower	1982	2,500	0.35	875	Ton	320.00	280,000
	1981	4,291	0.36	1,545	Ton	363.00	561,000
Sugar Beets	1982	428	21.2	9,074	Ton	31.63	287,000
	1981	1,547	20.9	32,332	Ton	31.02	1,003,000
Wheat	1982	55,000	1.1	60,500	Ton	140.00	8,470,000
	1981	68,000	0.9	61,200	Ton	145.00	8,874,000
Miscellaneous	1982	1,820					2,320,000
	1981	1,800					2,103,000
TOTAL FIELD CROPS	1982	188,068					\$39,825,000
	1981	198,818					\$36,842,000
FRUIT AND NUT CROPS:	Acreage, Production, Value 1961-1982						
	Year	Harvested Acreage	Per Acre	Total	Unit	Per Unit	VALUE Total
Almonds	1982	6,079	0.043	261	Ton	\$1,700.00	\$ 444,000
	1981	6,154	0.095	585	Ton	2,500.00	1,463,000
Apples	1982	256	5.1	1,306	Ton	211.00	276,000
	1981	256	3.4	870	Ton	116.00	101,000
Avocados	1982	843	1.42	1,197	Ton	930.00	1,113,000
	1981	833	1.12	933	Ton	520.00	485,000
Grapes	1982	4,500	3.9	17,550	Ton	601.70	10,560,000
	1981	4,374	4.2	18,371	Ton	569.00	10,453,000
Kiwifruit	1982	66	2.4	159	Ton	2,100.00	334,000
Lemons	1982	855	16.2	13,851	Ton	280.00	3,878,000
	1981	875	14.5	12,688	Ton	80.00	1,015,000
Walnuts	1982	2,853	0.36	1,027	Ton	1,070.00	1,099,000
	1981	2,853	0.31	884	Ton	1,020.00	902,000
Strawberries	1982	161	36,000.0	5,796,000	Lbs	.44	2,550,000
	1981	141	43,500.0	6,134,000	Lbs	.41	2,515,000
Miscellaneous	1982	200					1,063,000
	1981	216					1,175,000
TOTAL FRUIT AND NUT CROPS	1982	15,813					\$21,317,000
	1981	15,702					\$18,109,000

*Included in Miscellaneous in previous years.

VEGETABLE CROPS: Acreage, Production, Value 1981-1982

CROP	Year	Harvested Acreage	PRODUCTION		Per Unit	VALUE Total
			Total	Unit		
Beans, (Snap)	1982	384	303	116,352	30#	\$ 721,400
	1981	522	307	160,254	30#	1,277,000
Broccoli	1982	5,153	409	2,107,577	23#	11,423,000
	1981	4,197	408	1,712,376	23#	10,274,000
Cabbage	1982	770	700	539,000	45#	1,930,000
	1981	1,094	721	788,774	45#	3,691,000
Carrots	1982	897	914	819,958	48#	3,460,000
	1981*					
Cauliflower	1982	588	591	347,508	25#	2,231,000
	1981	615	486	298,890	25#	2,035,000
Celery	1982	1,359	995	1,352,205	60#	6,153,000
	1981	1,267	981	1,242,927	60#	8,613,000
Chinese Vegetables	1982	795	726	577,170	80#	4,100,000
	1981	647	739	478,133	80#	3,481,000
Lettuce (Iceburg)	1982	8,246	712	5,871,152	50#	24,952,000
	1981	8,616	762	6,565,392	50#	34,009,000
Lettuce, (Leaf)	1982	778	806	627,068	50#	2,646,000
	1981	754	780	588,120	50#	3,111,000
Peas (Edible Pod)	1982	2,620	91	238,420	45#	11,480,000
	1981	1,600	85	136,000	45#	5,508,000
Peppers, (Bell)	1982	444	570	253,080	30#	1,650,000
	1981	584	700	408,800	30#	3,123,000
Romaine	1982	591	862	509,442	60#	2,104,000
	1981	691	765	528,615	60#	2,929,000
Miscellaneous	1982	1,693				5,659,766
	1981	1,370				6,738,000
TOTAL VEGETABLE CROP	1982	24,318				578,510,000
	1981	21,957				84,789,000

*Included in Miscellaneous in previous years.

SEED AND NURSERY STOCK 1981-1982

CROP	Year	Harvested Acreage	Greenhouse Production (Sq. Ft.)		VALUE Total
			Total	Per Acre	
Cut Flowers	1982		1,169,200		\$ 3,624,000
	1981		1,038,000		3,265,000
Nursery	1982	131	782,810		5,583,000
	1981	122	755,600		5,488,000
Seed, Field (Crop & Flower)	1982	451			301,700
	1981	256			229,000
TOTAL SEED AND NURSERY STOCK	1982	582			\$ 9,509,000
	1981	378			\$ 8,982,000

LIVESTOCK AND POULTRY PRODUCTS: Production and Value 1981-1982

PRODUCT	Year	Total	PRODUCTION		Per Unit	VALUE Total
			Unit	Value		
Market Milk	1982	352,000	Cwt	\$13.30	\$4,682,000	
	1981	334,000	Cwt	13.57	4,532,000	
Wool	1982	31,453	Lbs	.47	14,800	
	1981	30,363	Lbs	.84	25,500	
Honey	1982	786,750	Lbs	.53	417,000	
	1981*					
Miscellaneous	1982				1,427,000	
	1981				1,636,000	
TOTAL LIVESTOCK AND POULTRY PRODUCTS	1982				\$6,541,000	
	1981				\$6,193,500	

*None Reported

LIVESTOCK AND POULTRY: Production and Value 1981-1982

TYPE	Year	Number of Head	Production	Unit	Per Unit	VALUE Total
Cattle and Calves	1982	96,350	529,925	Cwt	\$ 53.00	\$28,086,000
	1981	94,000	517,000	Cwt	52.00	28,884,000
Hogs	1982	7,500	16,875	Cwt	54.00	911,000
	1981	7,700	17,325	Cwt	48.00	832,000
Horses	1982	1,250		Each	13,000.00	16,250,000
	1981	700		Each	1,500.00	1,050,000
Poultry	1982	416,954	7,922,126	Lbs	.40	3,169,000
	1981	414,796	7,843,933	Lbs	.41	3,216,000
Sheep and Lambs	1982	11,400	10,602	Cwt	51.00	541,000
	1981	12,600	12,094	Cwt	43.00	520,000
Miscellaneous	1982					3,500,000
	1981					3,250,000
TOTAL LIVESTOCK AND POULTRY	1982					\$52,457,000
	1981					\$55,752,000

TOTAL AGRICULTURAL PRODUCTION ACREAGE: 1982 - 228,781

COMPARISON OF VALUATIONS OF MAJOR GROUPS DURING THE PAST TEN YEARS:

YEAR	ANIMAL INDUSTRY	FIELD CROPS	FRUIT & NUT CROPS	VEGETABLE CROPS	SEED & NURSERY STOCK	TOTAL VALUATIONS
1973	33,200,700	15,881,000	3,853,600	27,983,800	753,600	81,672,700
1974	25,839,900	23,377,300	4,952,600	28,256,700	1,941,000	84,367,500
1975	27,830,300	24,830,300	3,906,400	31,214,100	3,052,000	90,833,100
1976	26,167,500	19,585,500	6,443,840	34,999,600	6,185,000	93,381,440
1977	28,405,800	12,457,200	7,284,000	41,400,600	3,151,000	92,696,600
1978	31,400,000	20,646,000	10,255,000	60,664,000	5,195,000	128,160,000
1979	47,242,600	25,026,000	22,875,000	45,700,000	7,006,000	147,849,600
1980	40,012,300	41,775,000	18,921,000	51,499,000	7,846,000	160,053,300
1981	41,945,500	36,842,000	18,109,000	84,789,000	8,982,000	190,667,500
1982	58,998,000	39,825,000	21,317,000	78,510,000	9,509,000	208,159,000

ADMINISTRATION

Under Earl Kalar's leadership as Agency Chief administering County Agriculture, Measurement Standards and the Air Pollution Control District, the departments experienced another productive year. Agriculture's ongoing dynamic staff development program resulted in the successful certification and appointment of Bob Lilly to fill the vacant position of Deputy Agricultural Commissioner. This has allowed for further improvements in program continuity, policy and procedure development, and overall performance.

Specific accomplishments included: refinement of the Commissioner's role in the Nuclear Emergency Response Plan for Diablo Canyon, upgrading of the Oceano and Paso Robles Offices to better serve the public and reduce safety hazards, the initiation of a program to improve Commissioner response capabilities for agricultural chemical spills and incident investigations.

The Commissioner's office also initiated a Hazardous Materials Task Force which evaluated potential storage and generation problems created by county departments. The task force report and recommendations resulted in further study and a capital projects facility proposal with initial funding approved by the Board of Supervisors.

PEST PREVENTION

The major emphasis in the detection program was again focused on an intensive insect trapping program. Biologists rotated 1,409 traps on 12,241 properties during the year. The traps required 37,315 servetings to check for exotic insects. In addition to trapping, 263.5 miles of railroad right-of-way and county roadsides were inspected for noxious weeds. One hundred and ninety-one urban yards and high hazard properties were thoroughly evaluated for a multitude of possible pests. The total detection effort resulted in 132 biological samples of new and interesting creatures.

Weed eradication efforts continued on guava, skeleton weed, Salsola vermiculata and oblong spurge. San Luis Obispo County also supported the Gypsy Moth Eradication Program in Santa Barbara County by assisting in experimental plotwork.

Pest Exclusion program results were also impressive. Out of 4,326 inspected packages, 49 were rejected which potentially could have introduced detrimental pests into the county. Other states and countries were assured of pest cleanliness on 2,651 outgoing shipments inspected and certified by staff agricultural biologists. Additionally, 90 locations were inspected for exotic pests and information disseminated to owners and managers of the facilities and properties.

PEST MANAGEMENT

Agriculture and the general public took advantage of the department's weed and vertebrate expertise, various control materials, and the user funded ground squirrel control program. County staff controlled squirrels on 145,589 acres by ground and air in cooperation with ranchers and growers. An additional 956 properties were treated with county vertebrate control materials offered for sale at cost. Staff efforts resulted in an effective problem fire program that adequately protected non-target wildlife. General and noxious weed control was carried out along county and state roads. The cooperative effort of industry and the Commissioner's staff provided for a smooth pesticide permit program. Agricultural biologists approved 893 Restricted Material Permits, 5,717 Notices of Intent to Use a Restricted Material, performed 496 inspections and completed 50 investigations.

As an outfall of investigative findings, grain growers were further restricted in the usage of phenoxy herbicides. The Commissioner spearheaded a special study to mitigate the impact of these restrictions. A cooperative effort involving University of California staff, growers, local chemical industry representatives and the State Department of Food and Agriculture provided critical information on equipment and drift control. As a result, substantial modification allowing grain growers flexibility will be incorporated in next year's program.

Services were cut back to the general public and grower/ranchers for pick up and disposal of small quantities of old and/or unknown pesticides. The department was required to decommission its licensed storage site so that the County Emergency Operations Center could be constructed. A final disposal was made to Casmaria in May.

INSPECTION SERVICES

These programs continue to be severely impacted by inadequate staffing and funding. However, with existing resources, considerable consumer/industry protection was provided. Excellent quality and orderly marketing was assured as staff inspected 112,845 dozen eggs; 6,133,883 cartons of produce; and 11,747 containers of honey. Nursery stock was inspected at 91 locations countywide to assure pest cleanliness. Seed was inspected at 43 premises with 18% of the inspected lots being rejected for not meeting legal requirements for labeling and germination. The apriary program's efforts resulted in a conviction of one beekeeper who threatened public health and safety.

SAN LUIS OBISPO COUNTY

AGRICULTURAL COMMISSIONER/MEASUREMENT STANDARDS
FINANCIAL REPORT FISCAL YEAR 1981 - 1982

EXPENDITURES	FUNDING SOURCES
Salaries and Benefits	County General Fund
Services and Supplies	County Overhead Support*
Fixed Assets	State Aid Agriculture
County Overhead*	State Aid Measurement Standards
	Federal Aid Agriculture
	Services and Fees Agriculture
	Services and Fees Measurement Standards
	Other
TOTAL	TOTAL
\$618,731	\$315,769
166,571	55,296
987	295,688
55,296	426
\$841,585	2,812
	168,661
	410
	2,503
	\$841,585

*Countywide Cost Allocation Expense as provided by the Auditor/Controller.

