

# 2021 Hydrograph Excerpts Section 7 and Appendix J

**PUBLIC DRAFT**

LOS OSOS BASIN PLAN  
GROUNDWATER MONITORING PROGRAM  
2021 ANNUAL MONITORING REPORT

Prepared for the  
BASIN MANAGEMENT COMMITTEE

May 2022

CLEATH-HARRIS GEOLOGISTS  
75 Zaca Lane, Suite 110  
San Luis Obispo, California 93401

# Table of Contents

## Hydrographs

### Section 7 of Annual Report

- First Water Hydrographs
- Upper Aquifer Hydrographs
- Lower Aquifer Hydrographs

### Appendix J

- FW-6 30S/10E-24A Hydrograph
- FW-10 30S/11E-7Q1 Hydrograph
- FW-27 30S/10E-20L1 Hydrograph
- UA-4 30S/10E-13L1 Hydrograph
- UA-10 30S/11E-18H1 Hydrograph
- LA-6 30S/10E-13L4 Hydrograph
- LA-11 30S/10E-12J1 Hydrograph
- LA-13 30S/11E-18F2 Hydrograph
- LA-14 30S/11E-18L6 Hydrograph
- LA-16 30S/11E-18M1 Hydrograph
- LA-19 30S/11E-19H2 Hydrograph
- LA-37 30S/11E-21B1 Hydrograph
- LA-40 30S/11E-13Bb Hydrograph
- LA-41 30S/11E-13Bb Hydrograph

### Well Maps

- First Water Well Locations
- Upper Aquifer Well Locations
- Lower Aquifer Well Locations

### Water Level Hydrographs First Water

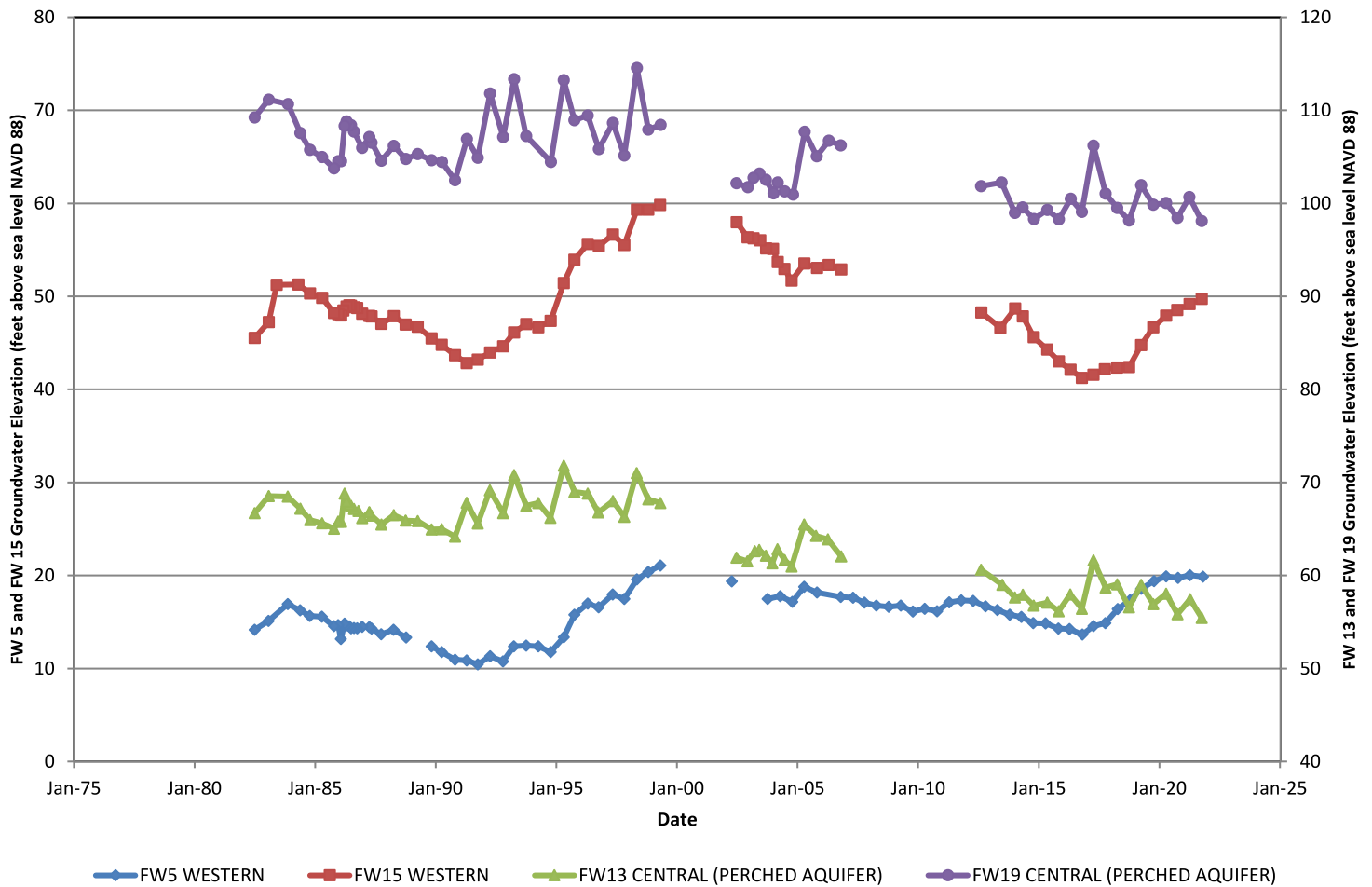


Figure 15  
Water Level Hydrographs  
Perched Aquifer / First Water  
Los Osos Groundwater Basin  
2021 Annual Report

Cleath-Harris Geologists

### Water Level Hydrographs Upper Aquifer

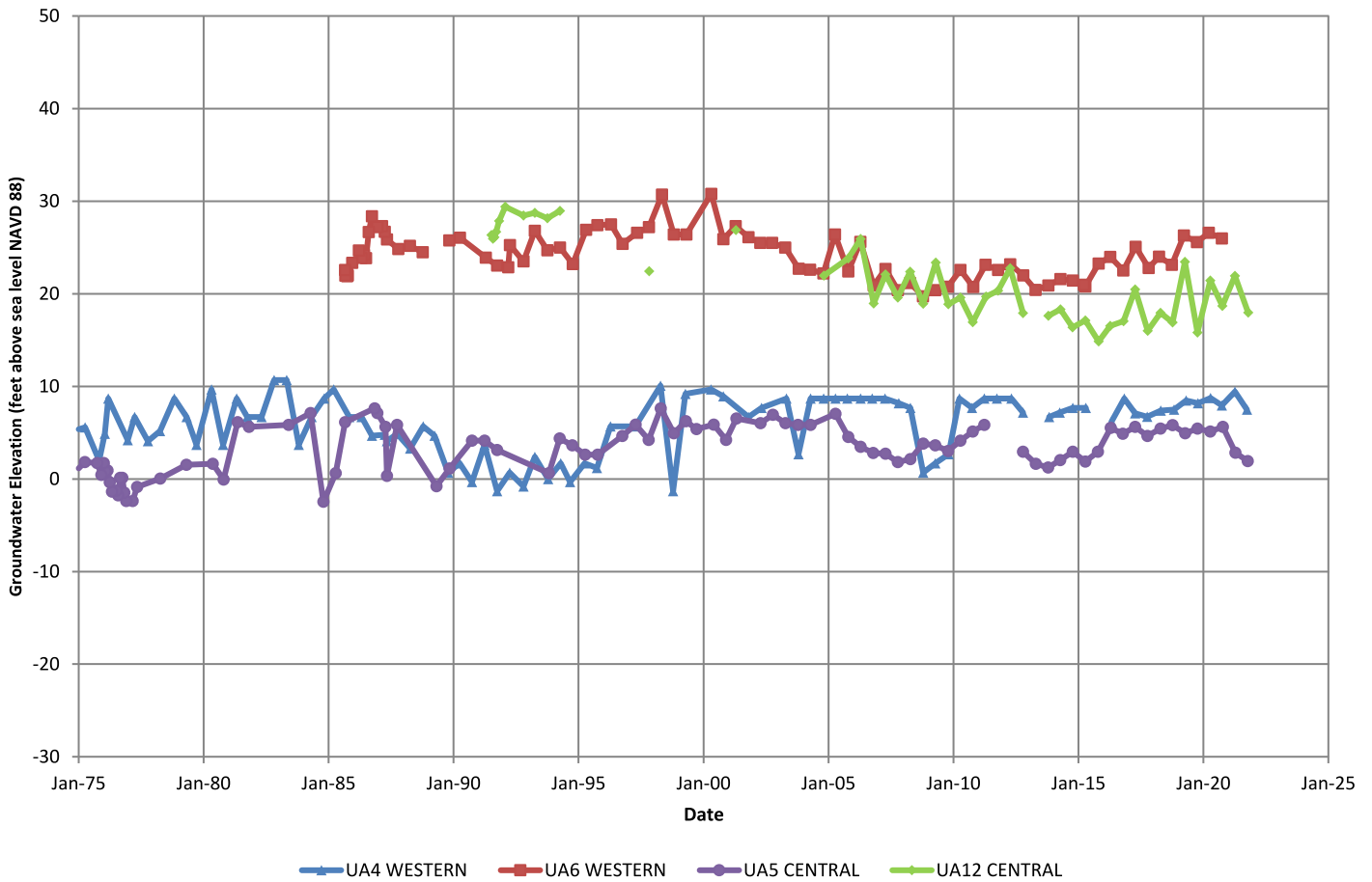


Figure 16  
Water Level Hydrographs  
Upper Aquifer  
Los Osos Groundwater Basin  
2021 Annual Report

Cleath-Harris Geologists

### Water Level Hydrographs Lower Aquifer

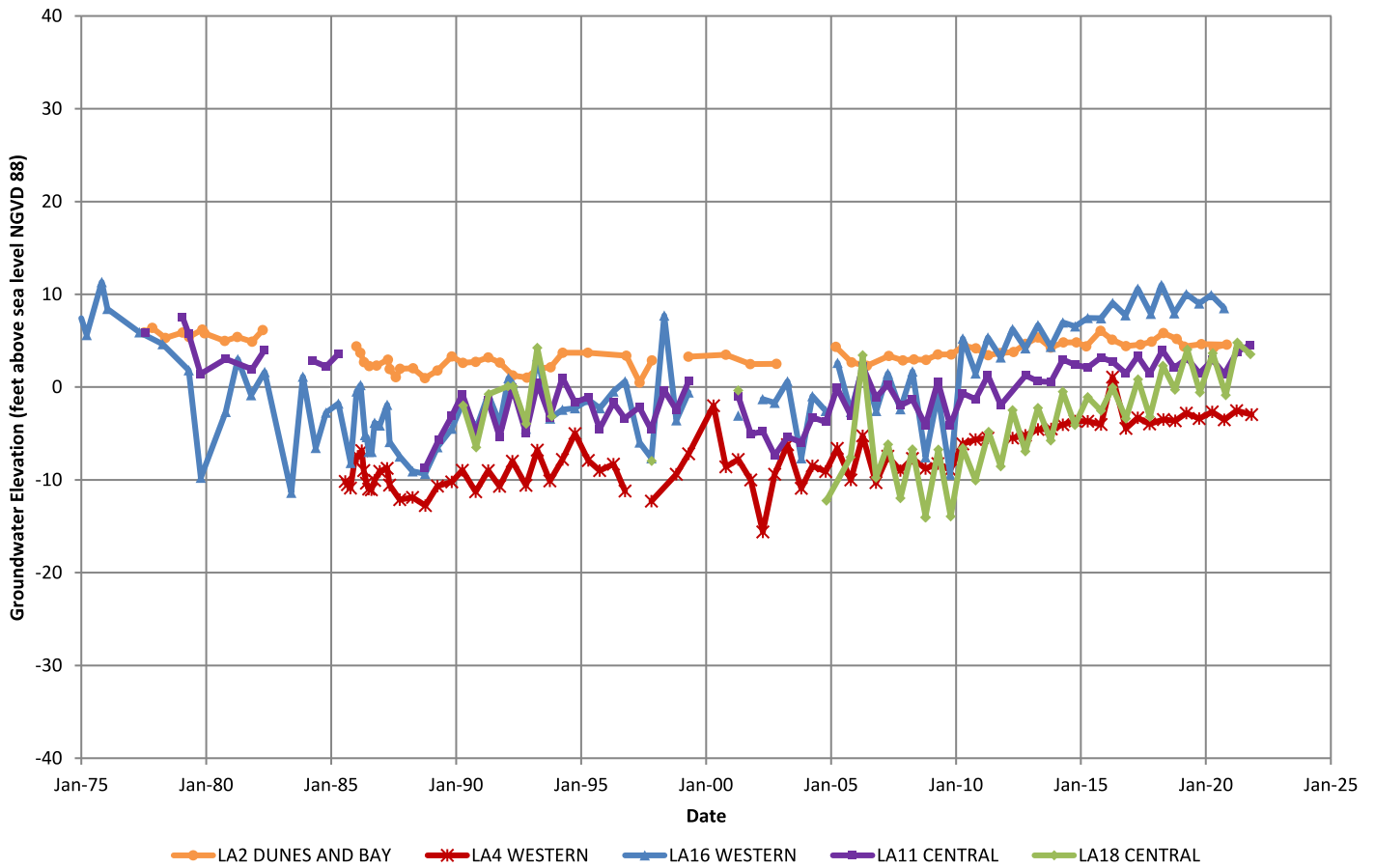
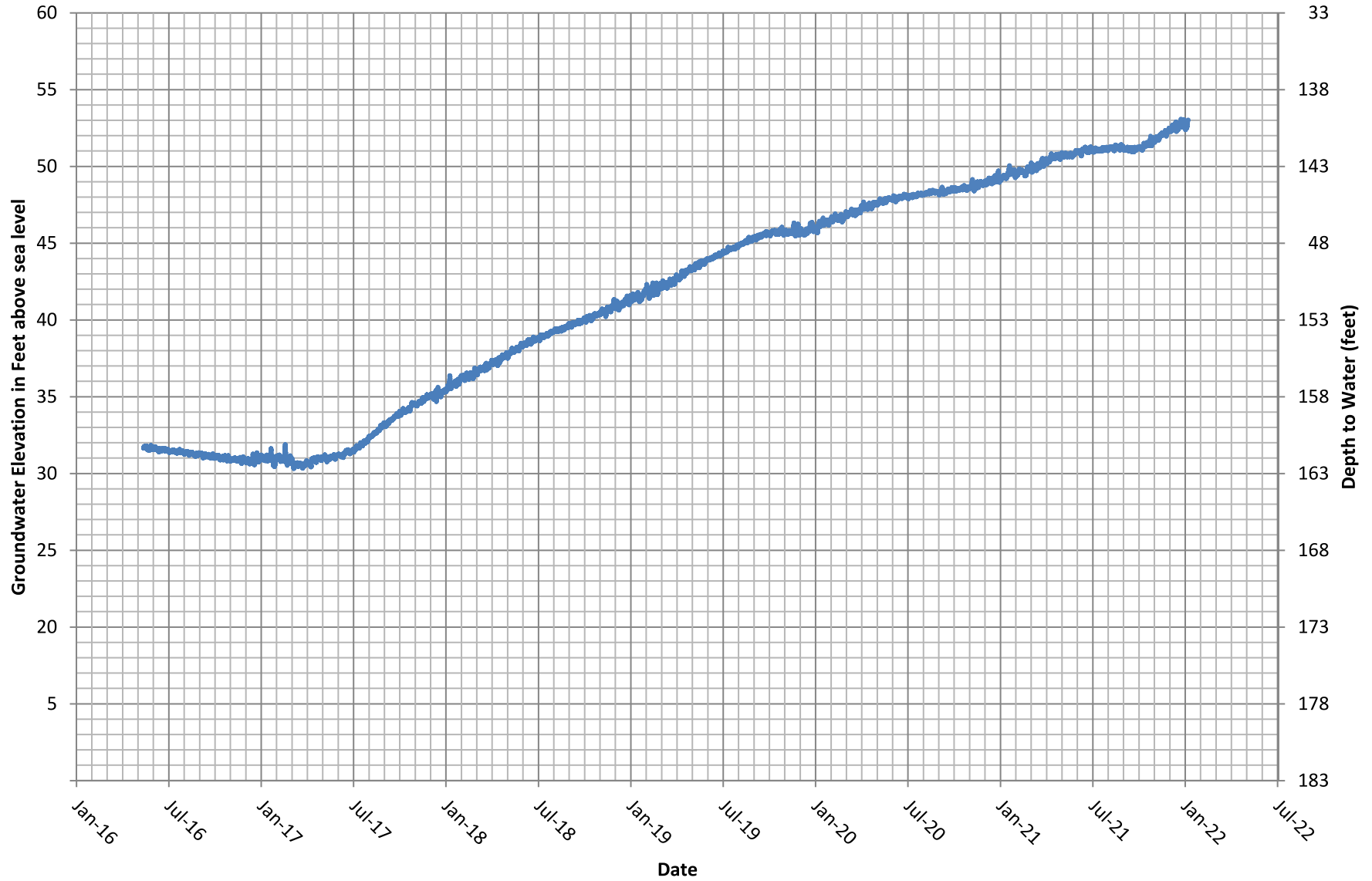


Figure 17  
Water Level Hydrographs  
Lower Aquifer  
Los Osos Groundwater Basin  
2021 Annual Report

Cleath-Harris Geologists

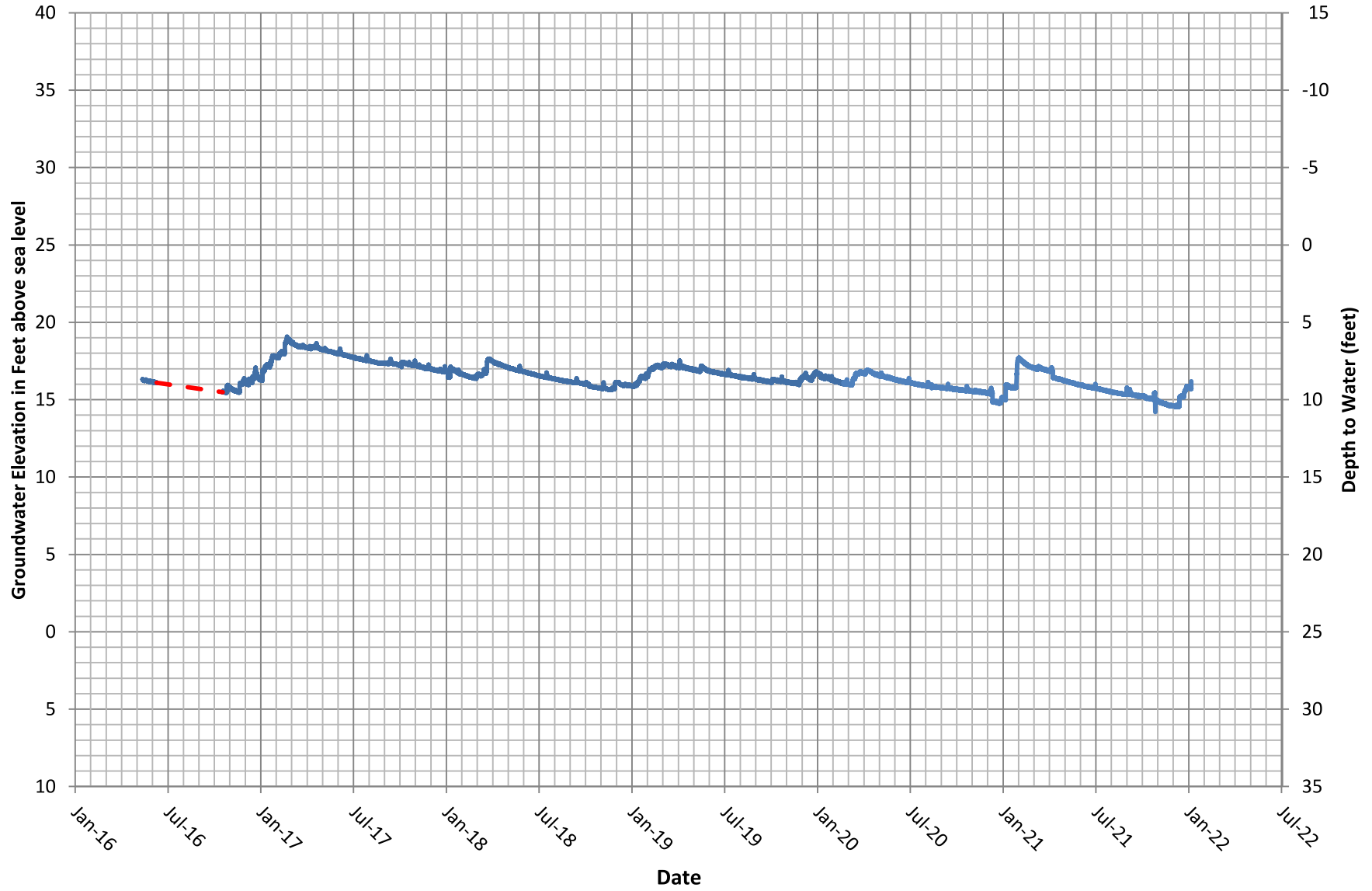
# Hydrograph FW-6 (30S/10E-24A)

Reference Point Elevation: 193.04'



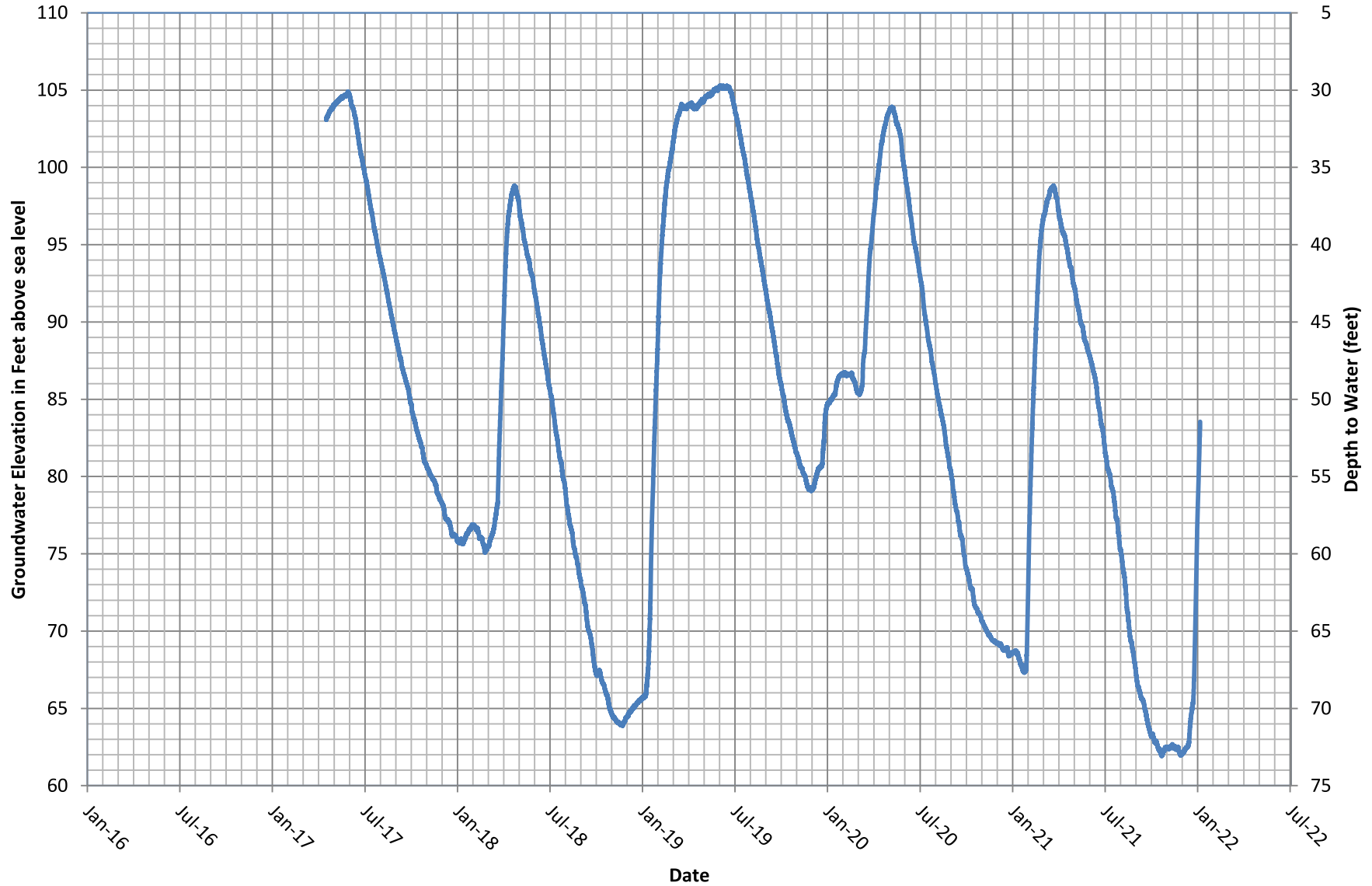
# Hydrograph FW-10 (30S/11E-7Q1)

Reference Point Elevation: 25.29'



# Hydrograph FW-27 (3S/10E-20L1)

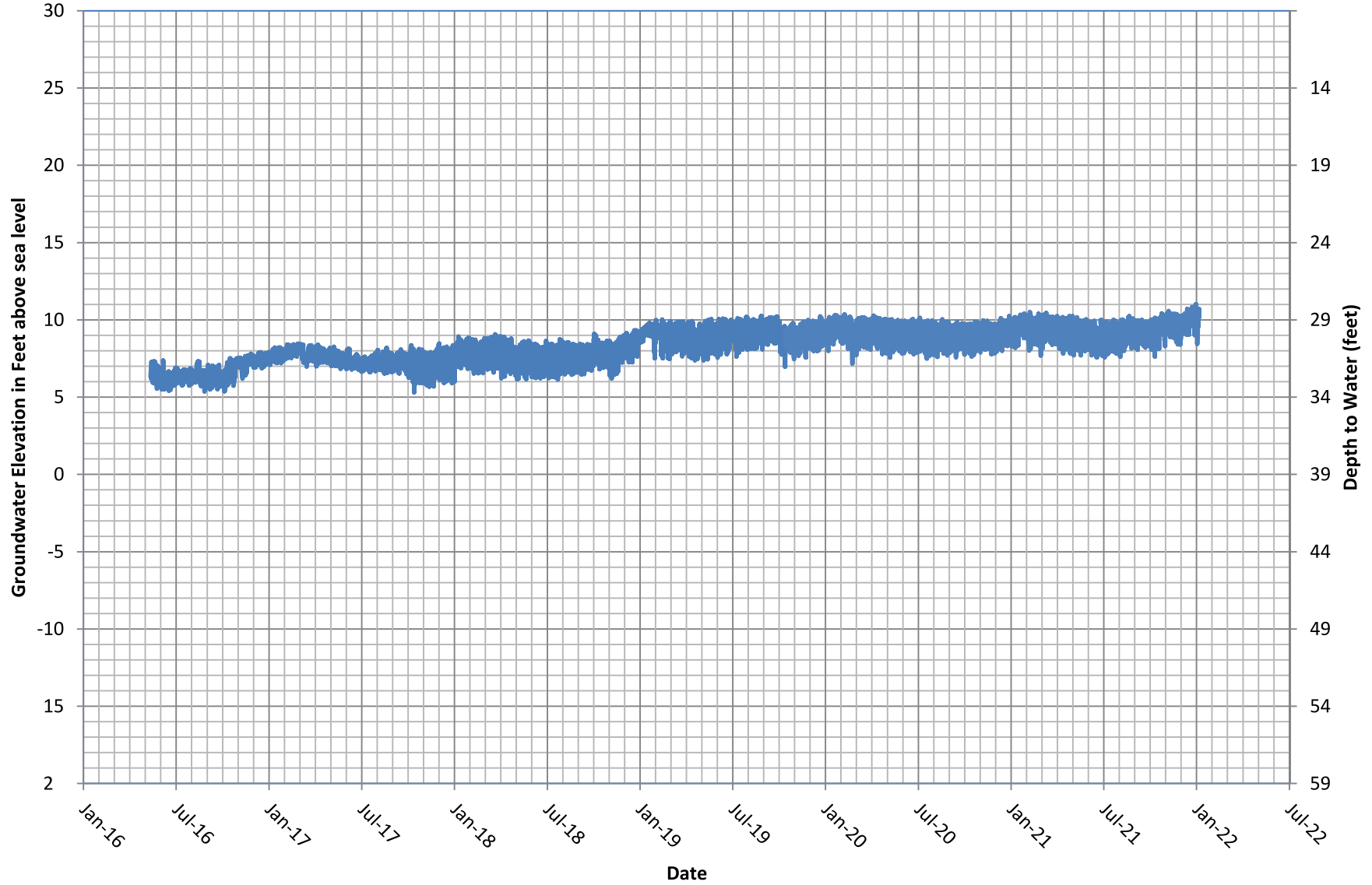
Reference Point Elevation: 134.07'





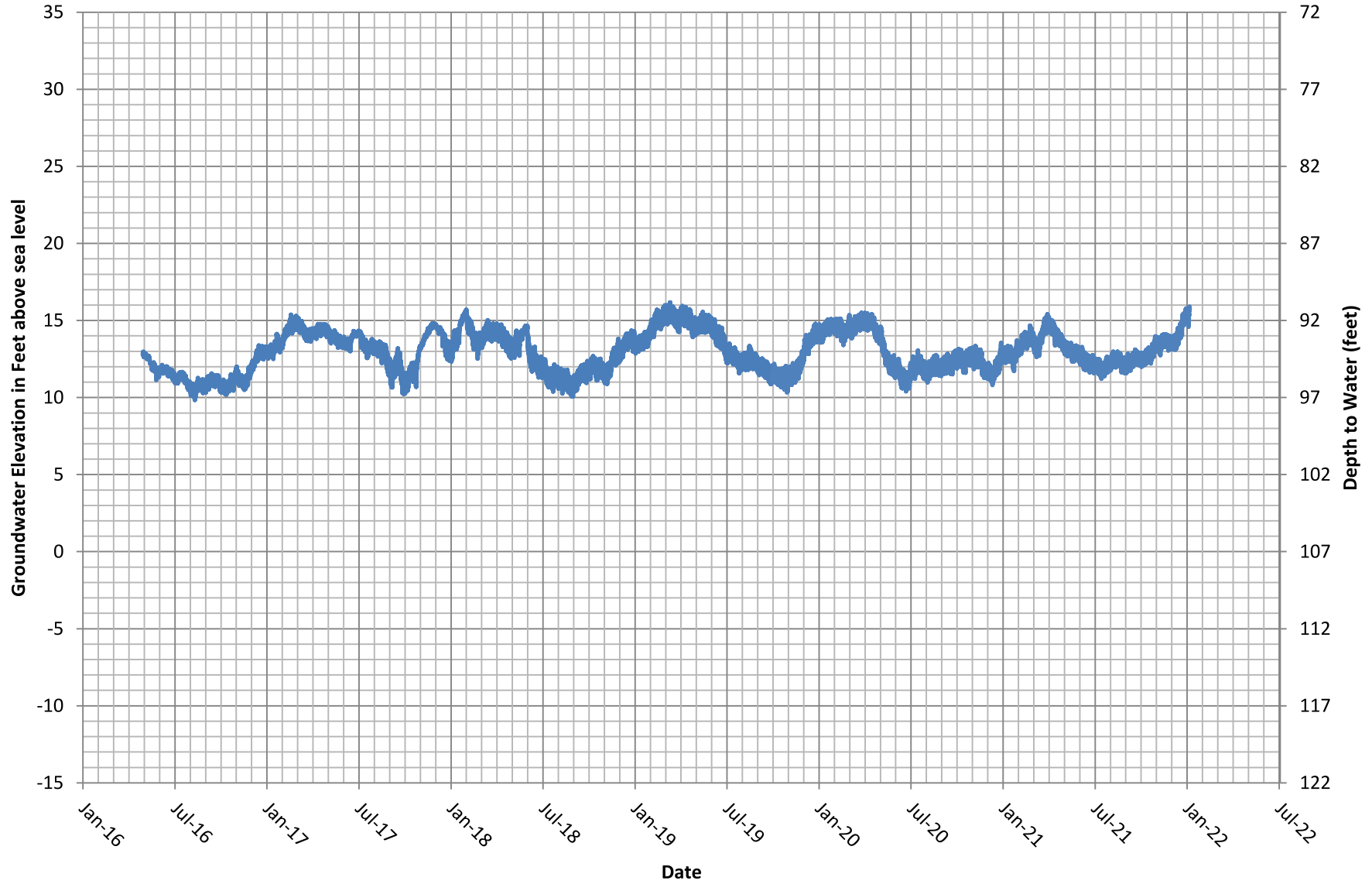
# Hydrograph UA-4 (30S/10E-13L1)

Reference Point Elevation: 38.68'



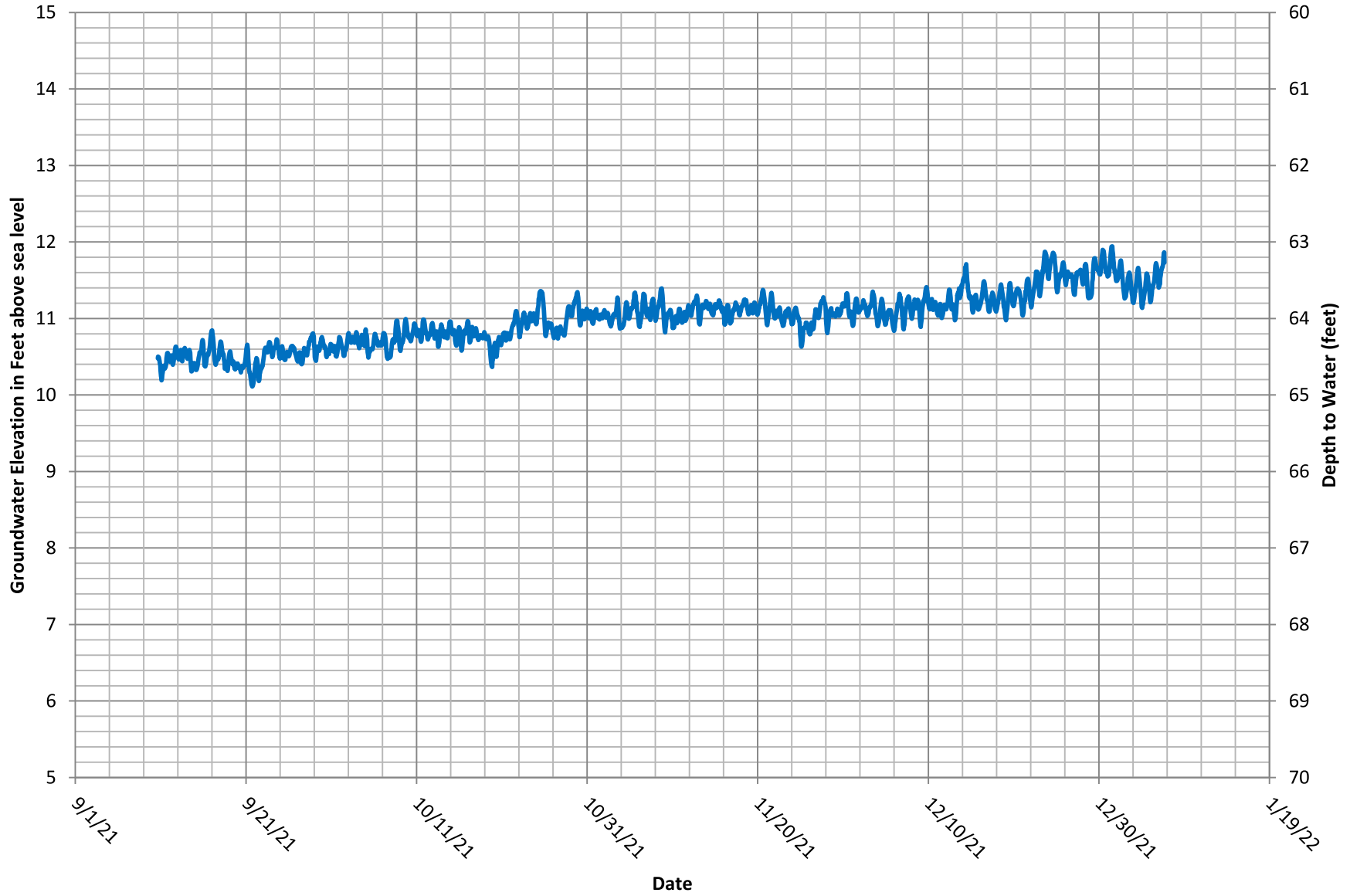
# Hydrograph UA-10 (30S/11E-18H1)

Reference Point Elevation: 107.10'



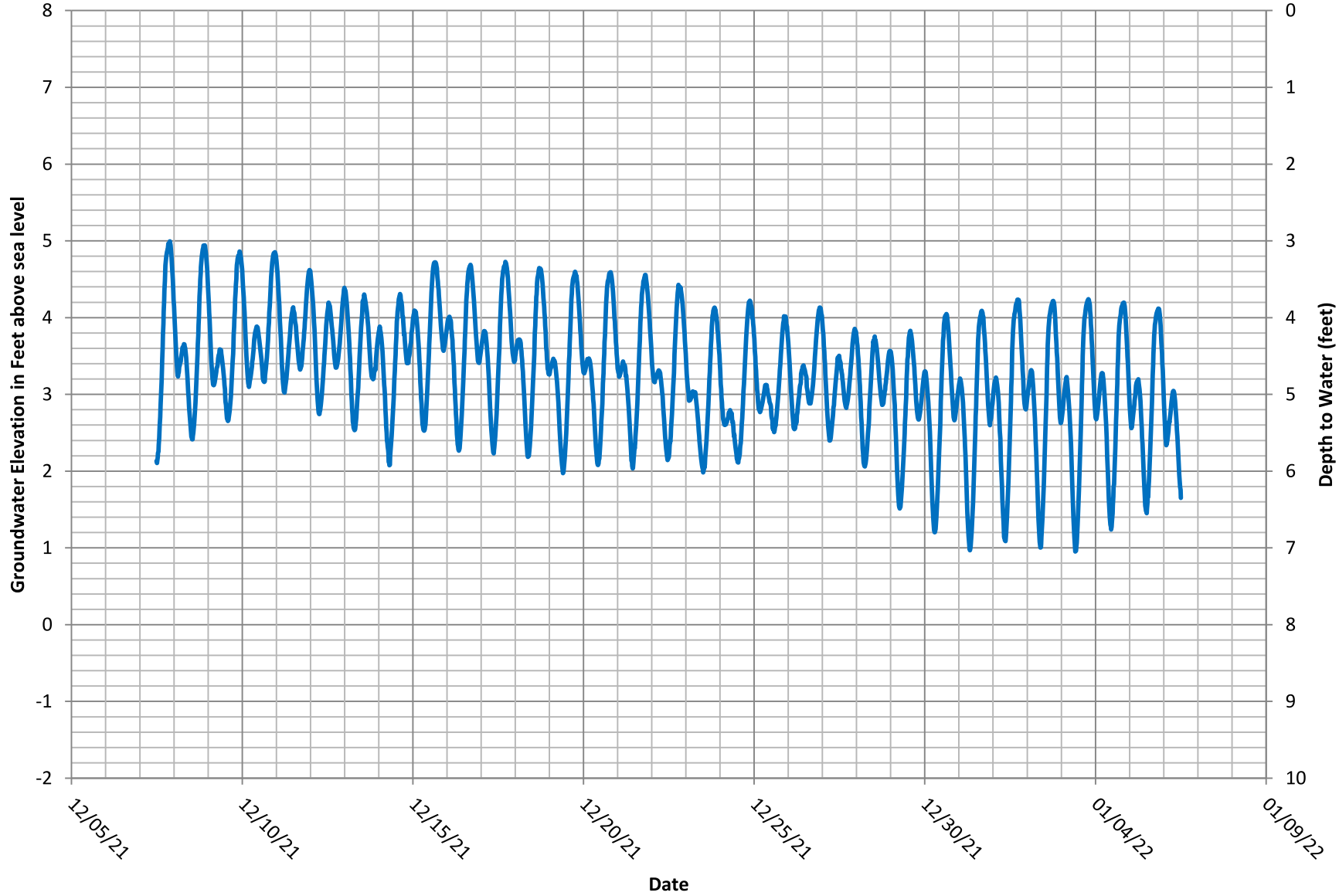
# Hydrograph LA-6 (30S/10E-13L4)

Reference Point Elevation: 74.58'



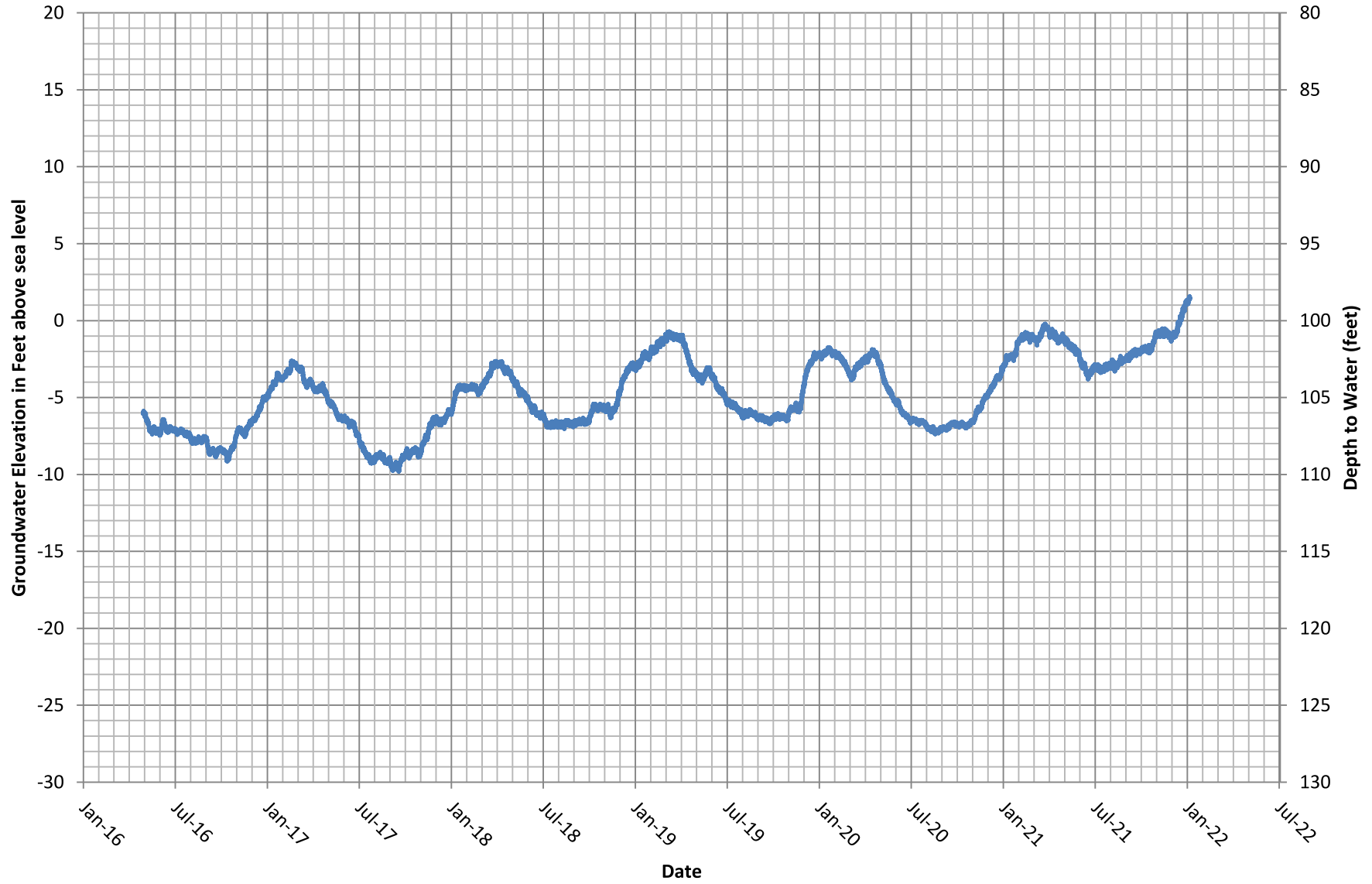
# Hydrograph LA-11 (30S/10E-12J1)

Reference Point Elevation 8.43'



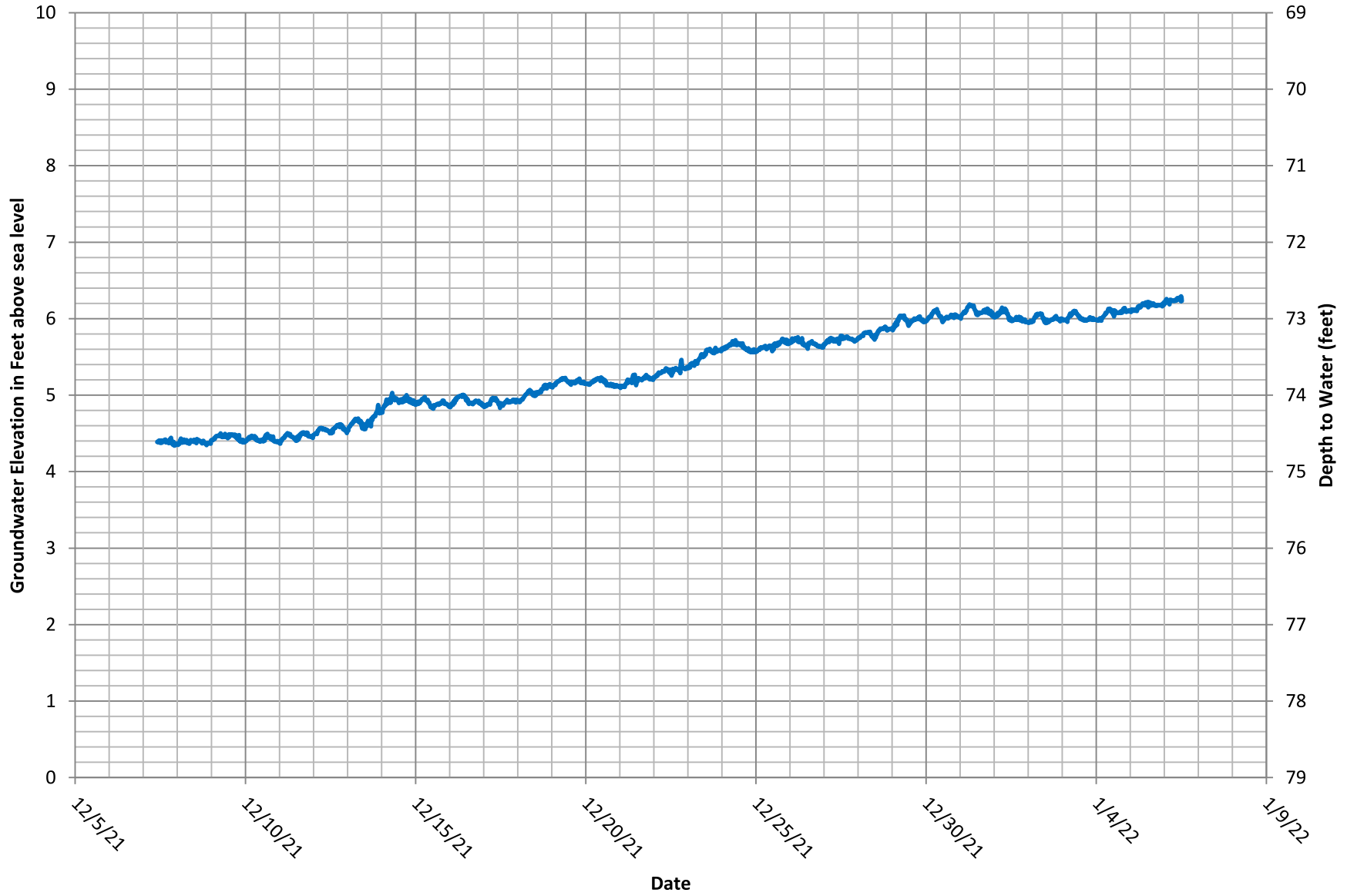
# Hydrograph LA-13 (30S/11E-18F2)

Reference Point Elevation: 100'



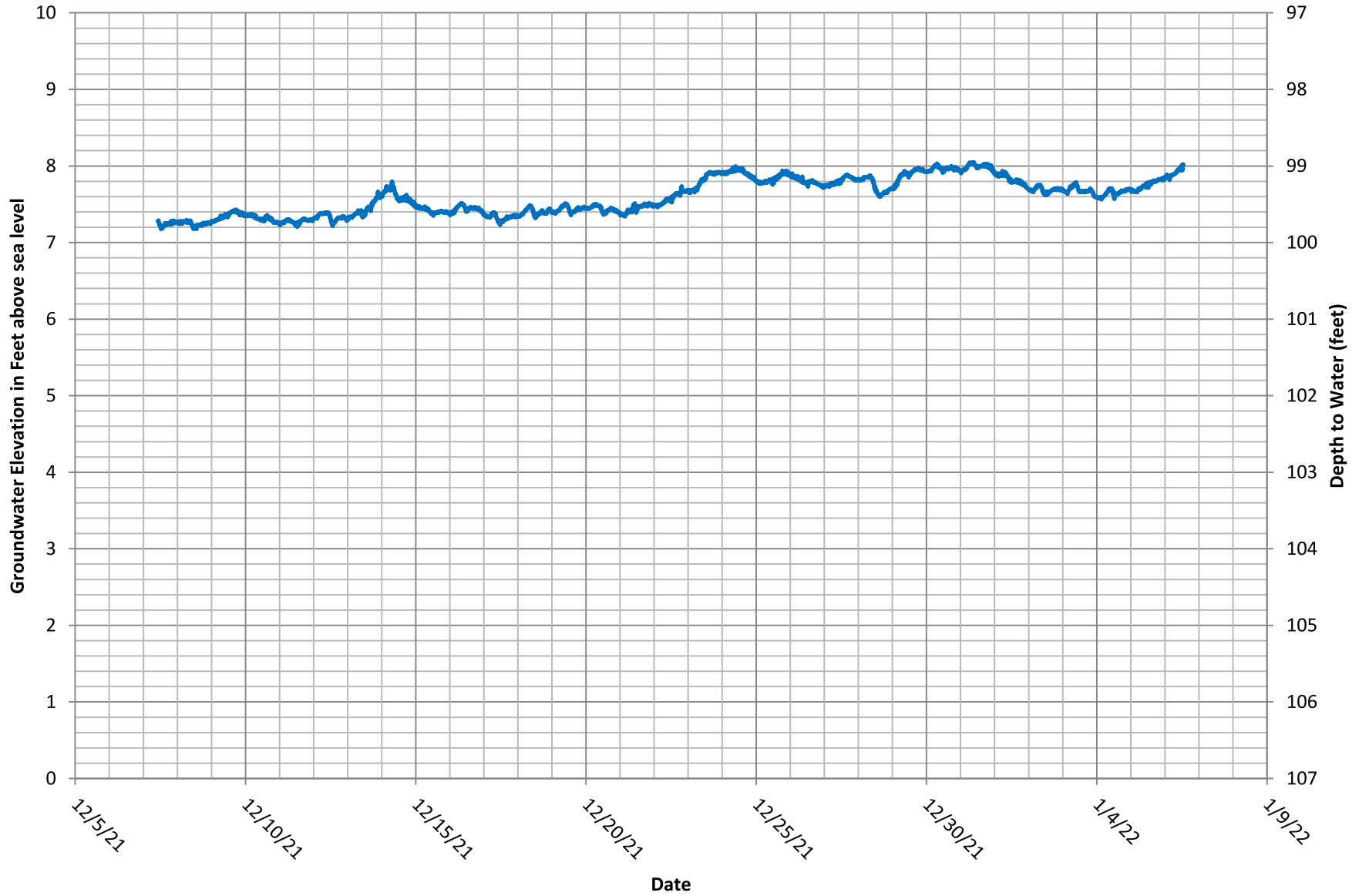
# Hydrograph LA-14 (30S/11E-18L6)

Reference Point Elevation: 79.36



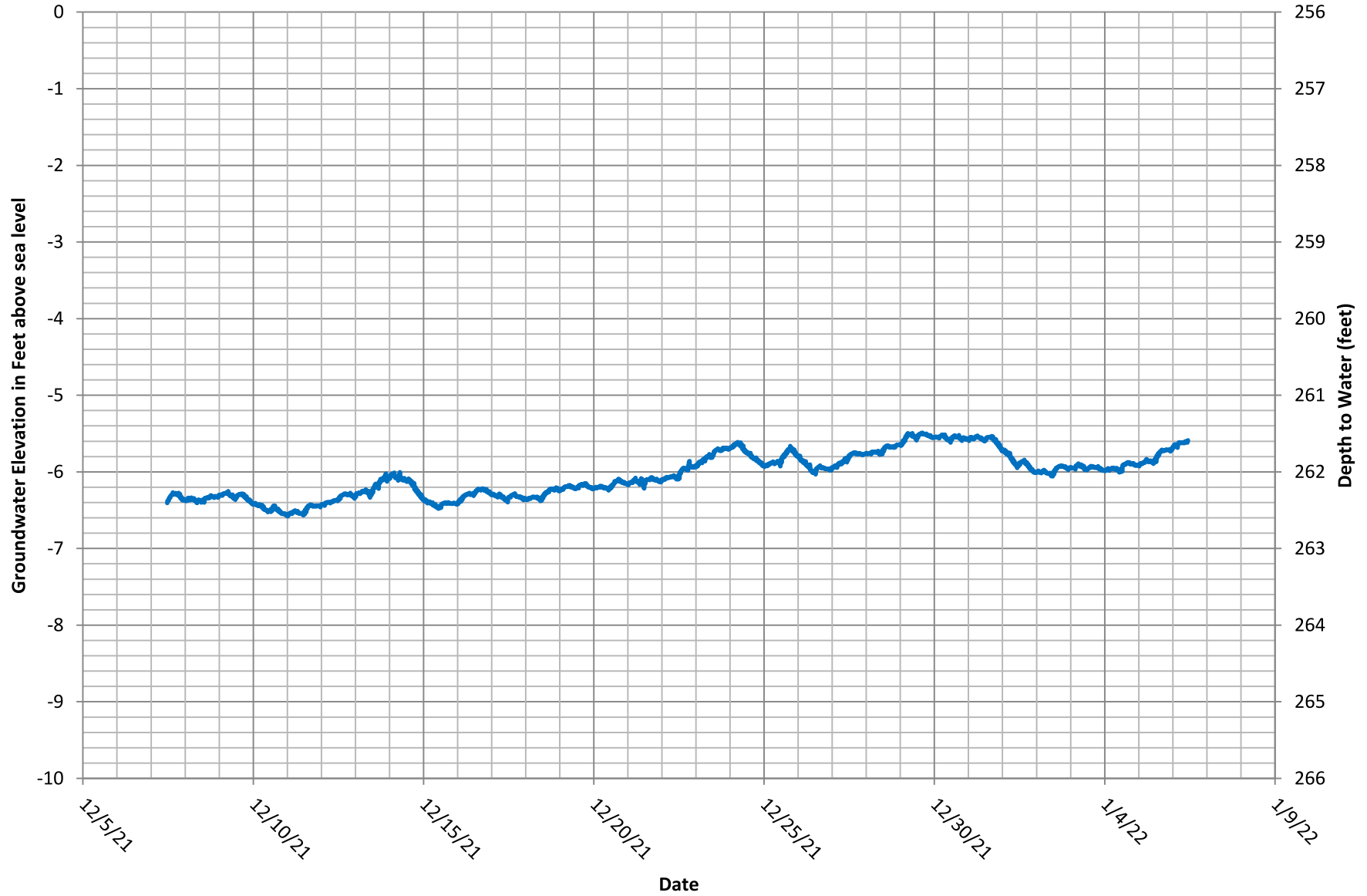
# Hydrograph LA-16 (30S/11E-18M1)

Reference Point Elevation: 106.82'



# Hydrograph LA-19 (30S/11E-19H2)

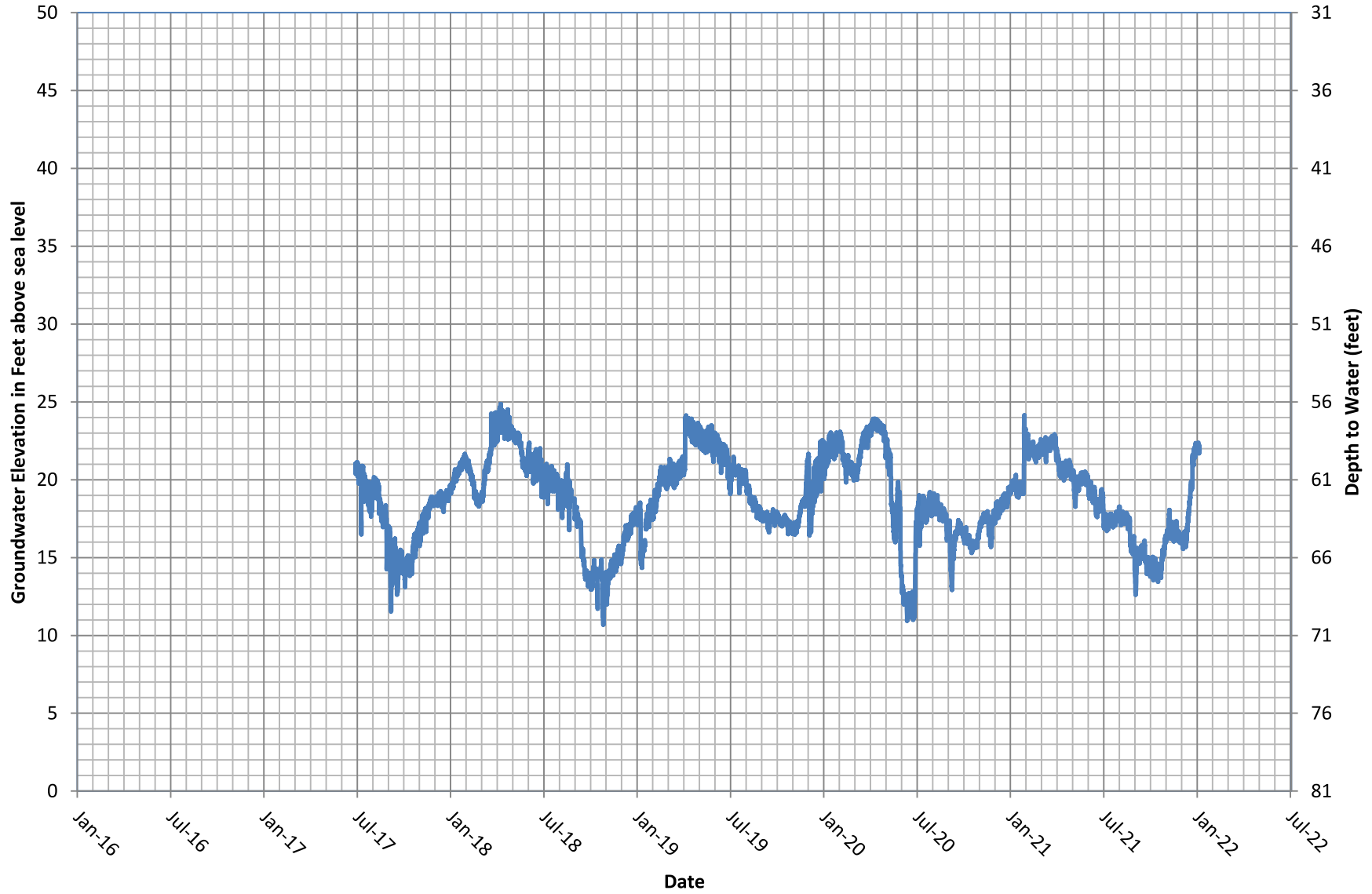
Reference Point Elevation: 256.2'





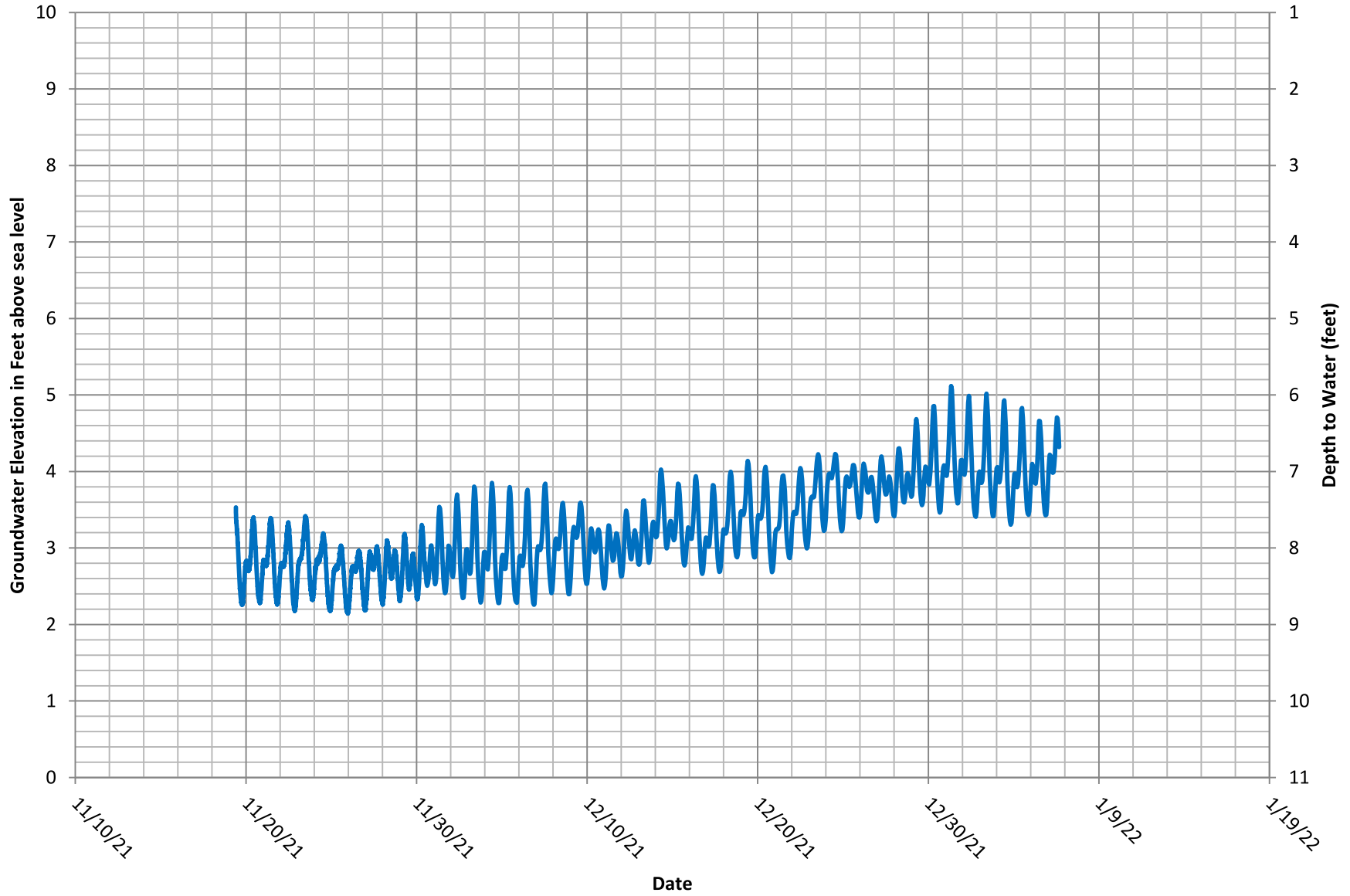
# Hydrograph LA-37 (30S/11E-21B1)

Reference Point Elevation: 81.61'



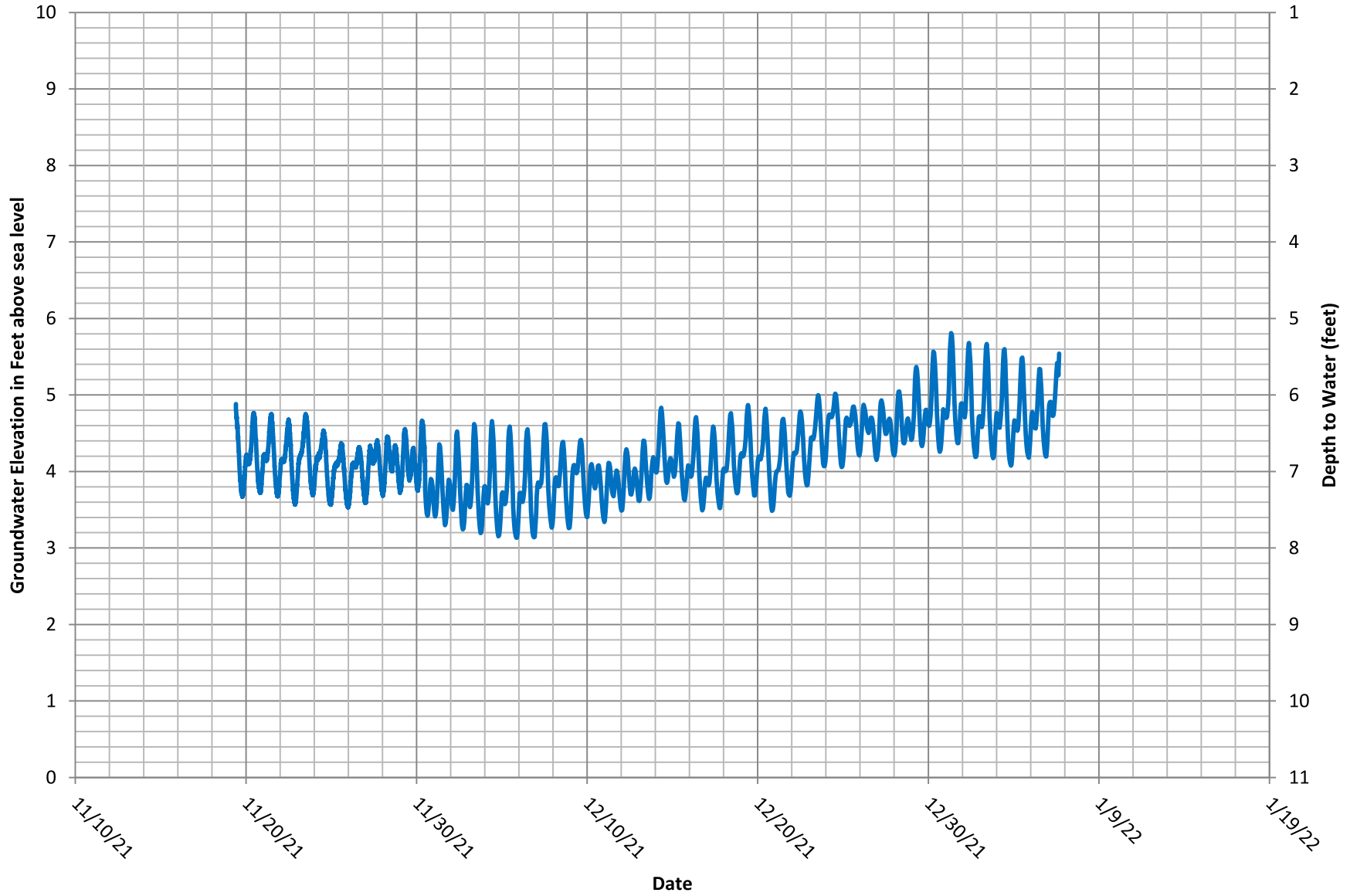
# Hydrograph LA-40 (30S/11E-13Bb)

Reference Point Elevation: 11.46'



# Hydrograph LA-41 (30S/11E-13Bb)

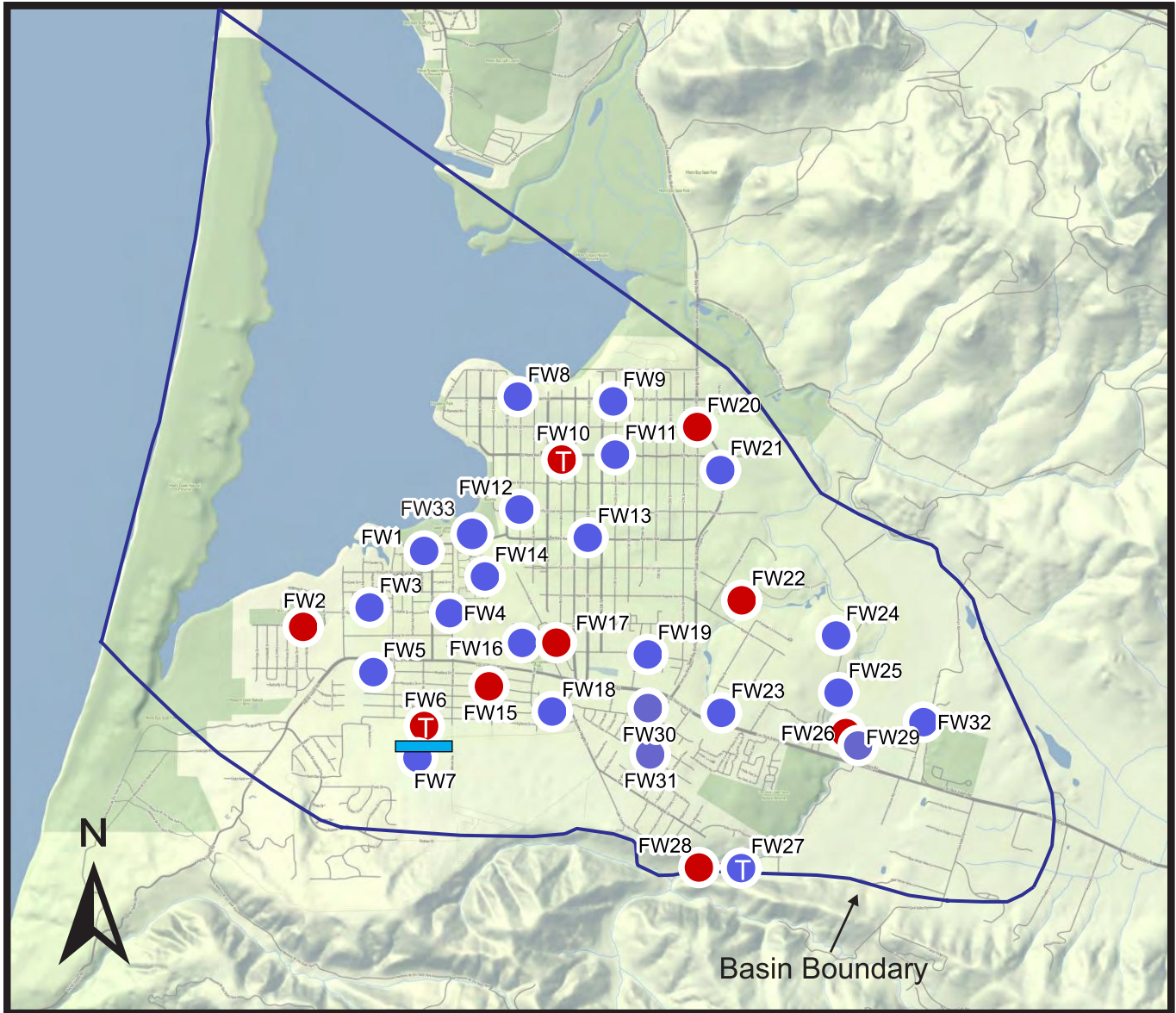
Reference Point Elevation: 11.46'



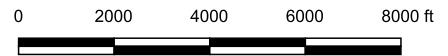
# **Well Maps**

Map Excerpts from the Los Osos 2021 Annual Report  
Section 2.2

Map Excerpts from the Los Osos 2021 Annual Report - Section 2.2



Base Image: Stamen-Terrain



Scale: 1 inch ≈ 4,000 feet

Explanation

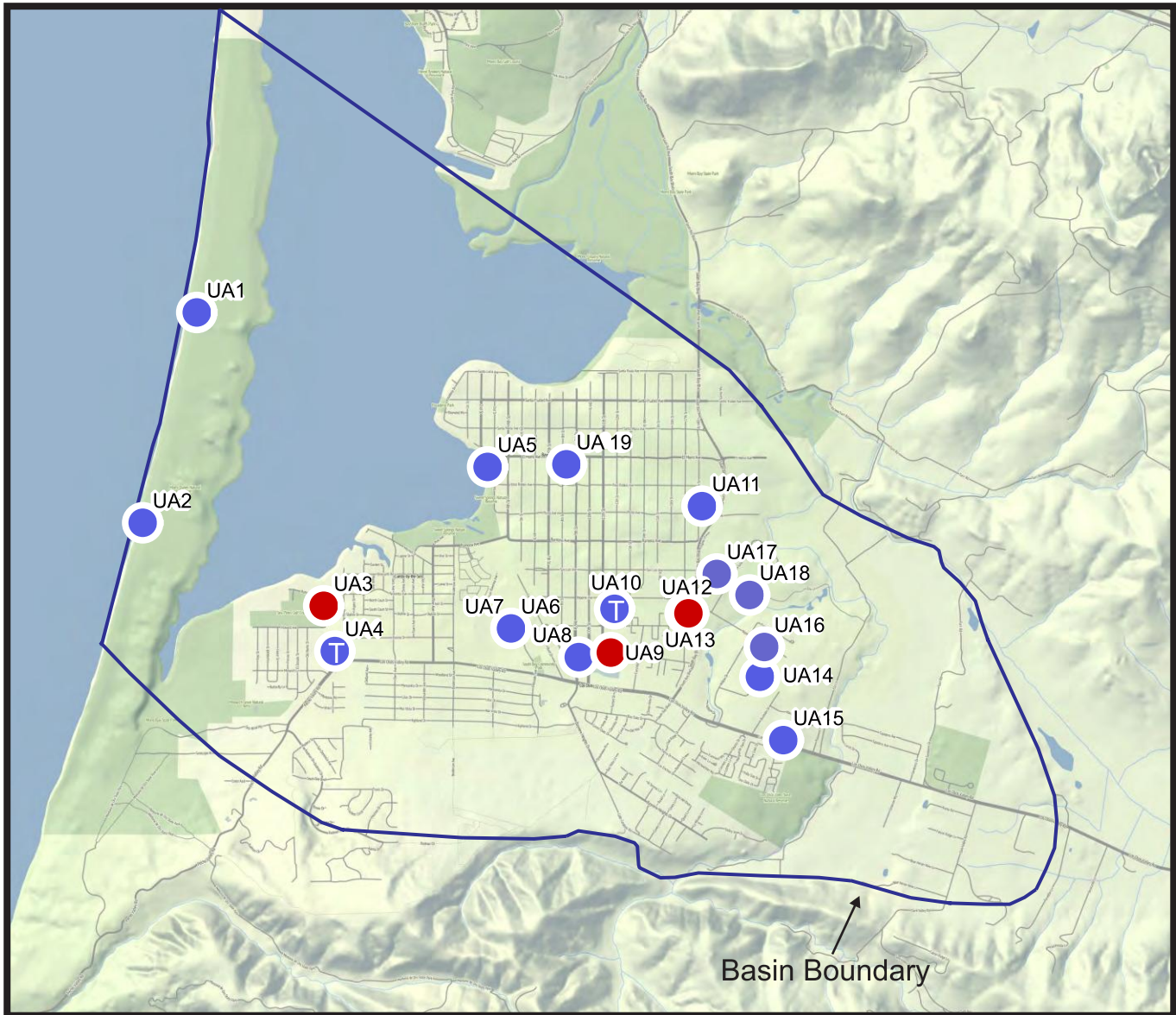
- LOBP Water Level Monitoring Well
- Ⓧ Water Level Transducer
- Water Level and Water Quality Monitoring Well
- Ⓧ Water Level Transducer and Water Quality Monitoring Well
- ▭ Broderson Leach Field

Note: First Water wells refers to wells screened within the first 50 feet of saturated sediments across the basin, regardless of the aquifer.

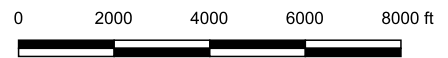
Figure 2  
Groundwater Monitoring Program  
First Water Wells  
Los Osos Groundwater Basin  
2021 Annual Report

Cleath-Harris Geologists

Map Excerpts from the Los Osos 2021 Annual Report - Section 2.2



Base Image: Stamen-Terrain



Scale: 1 inch ≈ 4,000 feet

Explanation

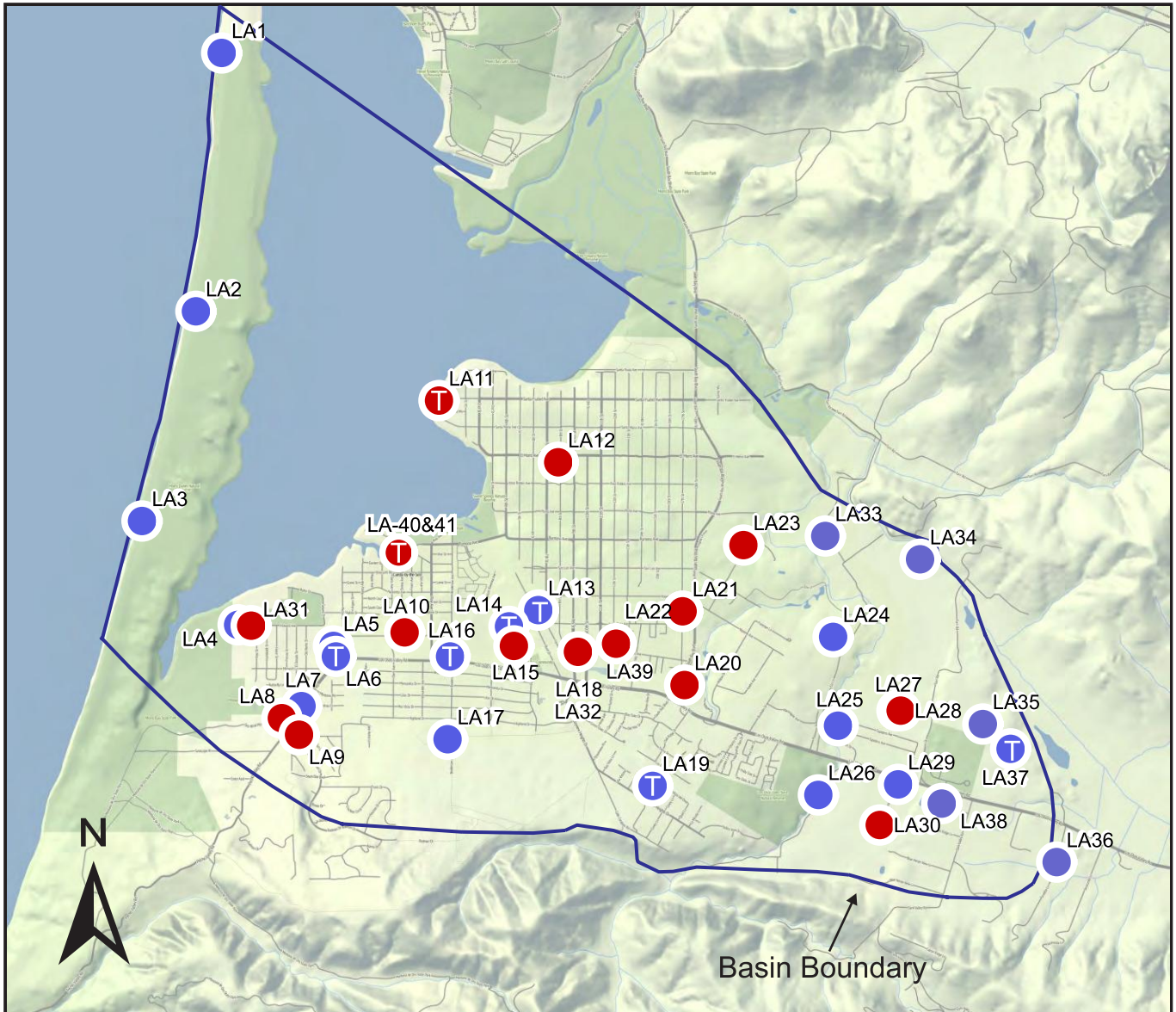
- LOBP Water Level Monitoring Well
- T Water Level Transducer
- Water Level and Water Quality Monitoring Well
- T Water Level Transducer and Water Quality Monitoring Well

Figure 3  
Groundwater Monitoring Program  
Upper Aquifer Wells  
Los Osos Groundwater Basin  
2021 Annual Report

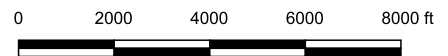
Cleath-Harris Geologists



Map Excerpts from the Los Osos 2021 Annual Report - Section 2.2



Base Image: Stamen-Terrain



Scale: 1 inch ≈ 4,000 feet

Explanation

- LOBP Water Level Monitoring Well
- ⊕ Water Level Transducer
- Water Level and Water Quality Monitoring Well
- ⊕ Water Level Transducer and Water Quality Monitoring Well

Note: LA24 & FW24 and LA 40 & 41 are nested wells (same borehole)

LA18 and LA32 at same site (two symbols used in 2016 Annual Report figure to indicate LA32 was a program addition).

Figure 4  
Groundwater Monitoring Program  
Lower Aquifer Wells  
Los Osos Groundwater Basin  
2021 Annual Report

Cleath-Harris Geologists