

Nipomo Mesa Management Area

13th Annual Report

Calendar Year 2020

2020 Hydrograph Excerpts Appendix B

Prepared by

NMMA Technical Group

Submitted April 2021

Table of Contents

Hydrographs

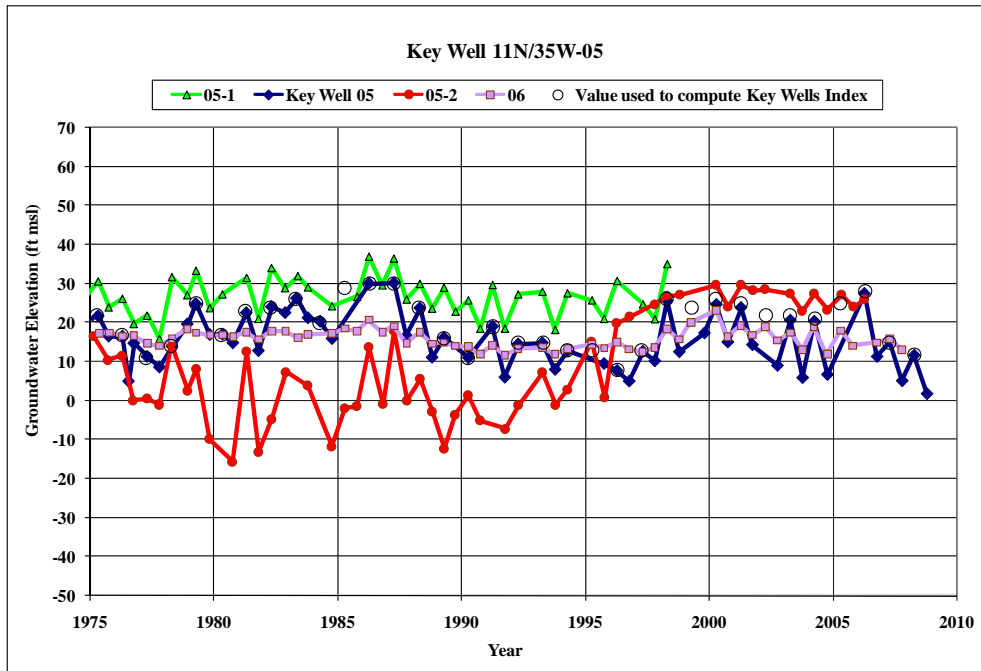
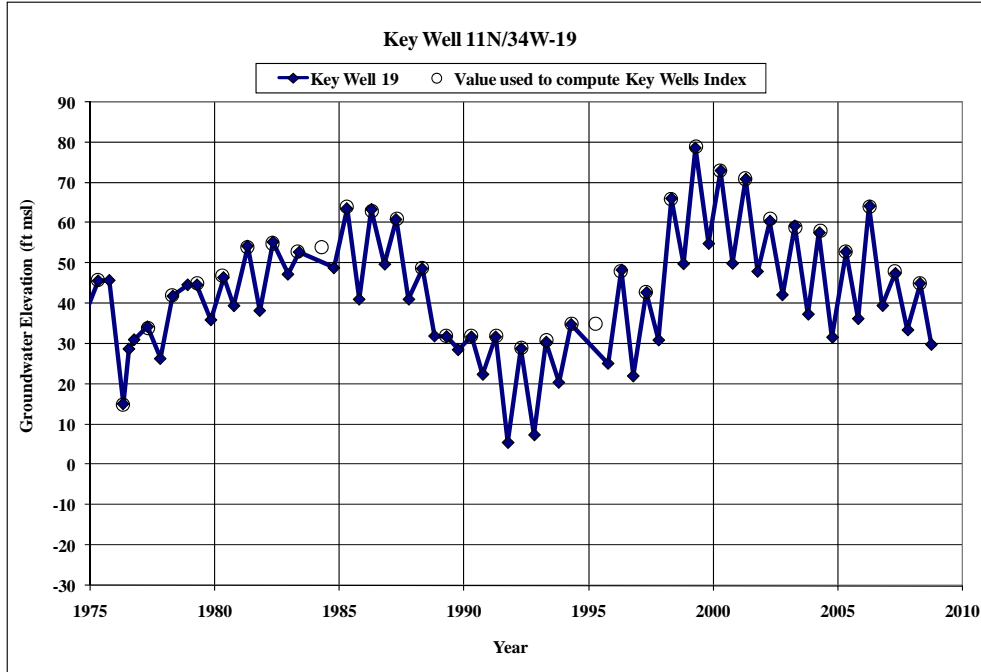
- 11N/34W-19 and 11N/35W-05 Hydrographs
- 11N/35W-08 and 11N/35W-09 Hydrographs
- 11N/35W-13 and 11N/35W-22 Hydrographs
- 11N/35W-23 and 12N/35W-33 Hydrographs
- 11N/36W-12C Coastal Monitoring Well Hydrograph
- 12N/36W-36L Coastal Monitoring Well Hydrograph
- North-West Portion of NMMA Hydrograph
- South-East Portion of NMMA Hydrograph

Well Maps

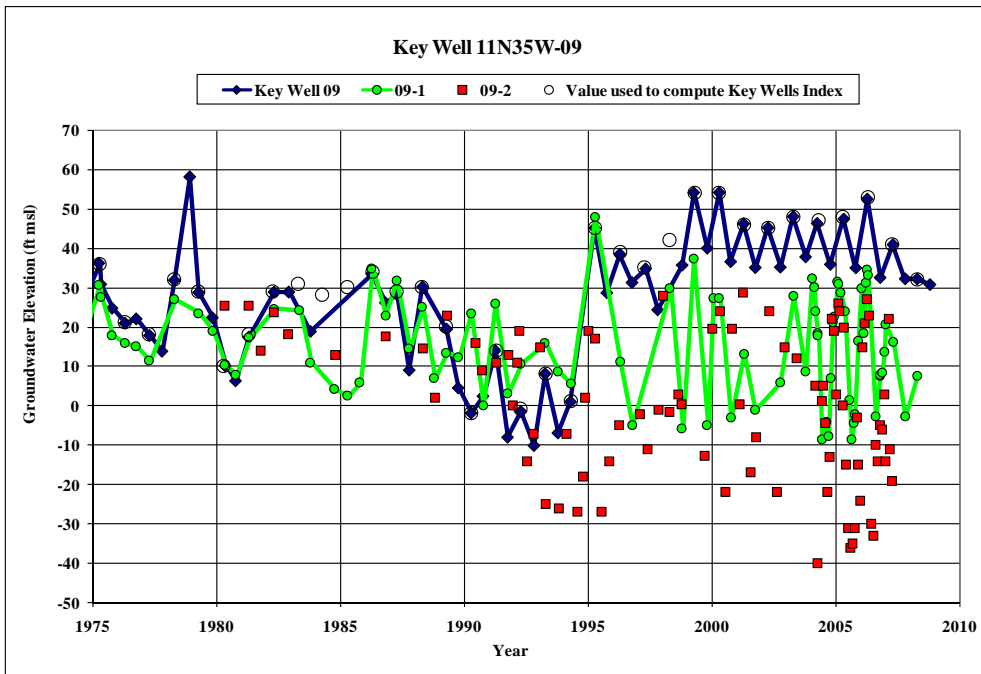
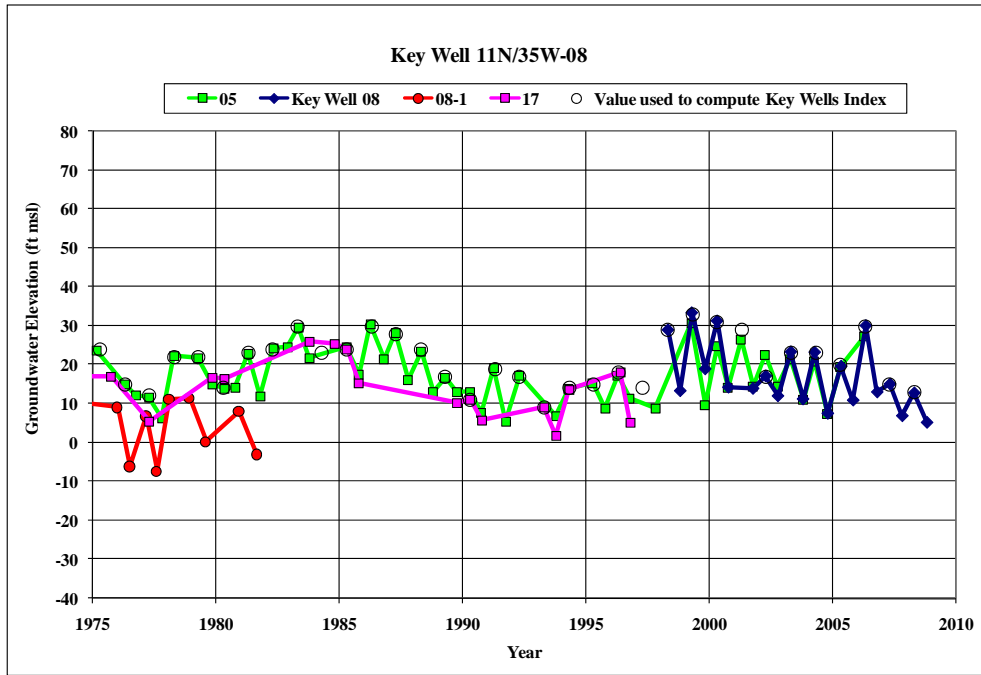
- NMMA Monitoring Program Well Locations

Final 4/13/09

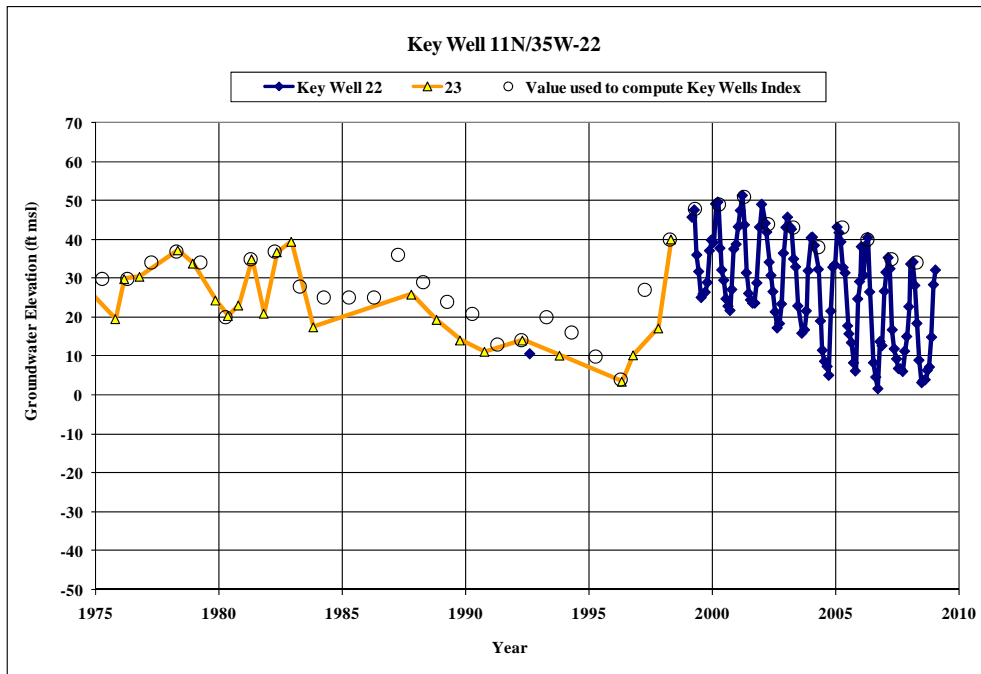
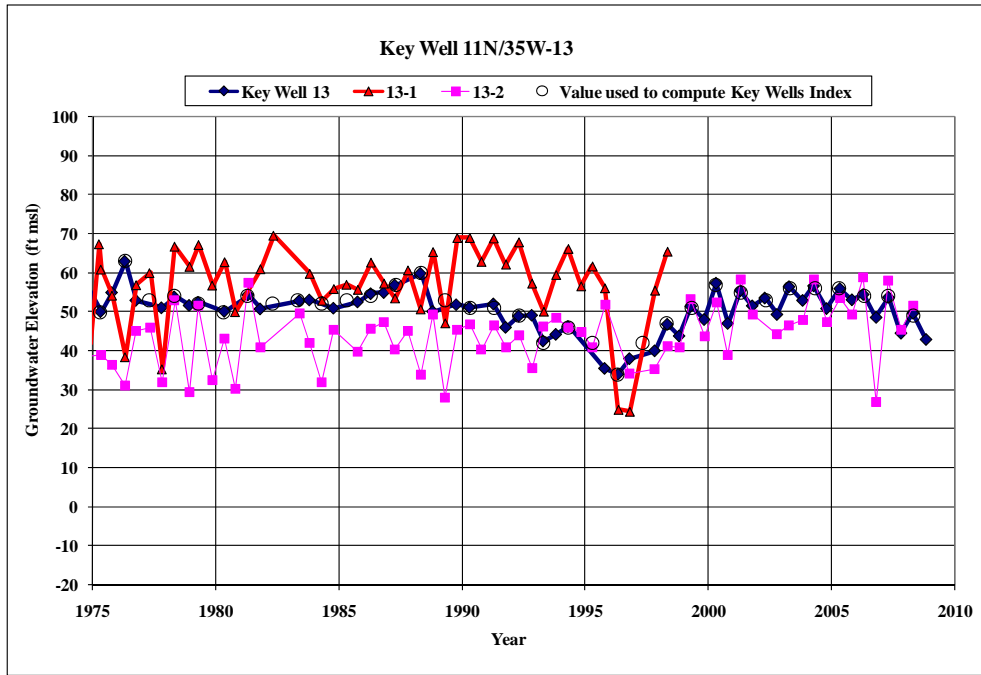
between Spring and Fall measurements in that well. If there is a significant data gap in the record for a particular well (e.g., 22 well below), a nearby well was used to fill the gap.



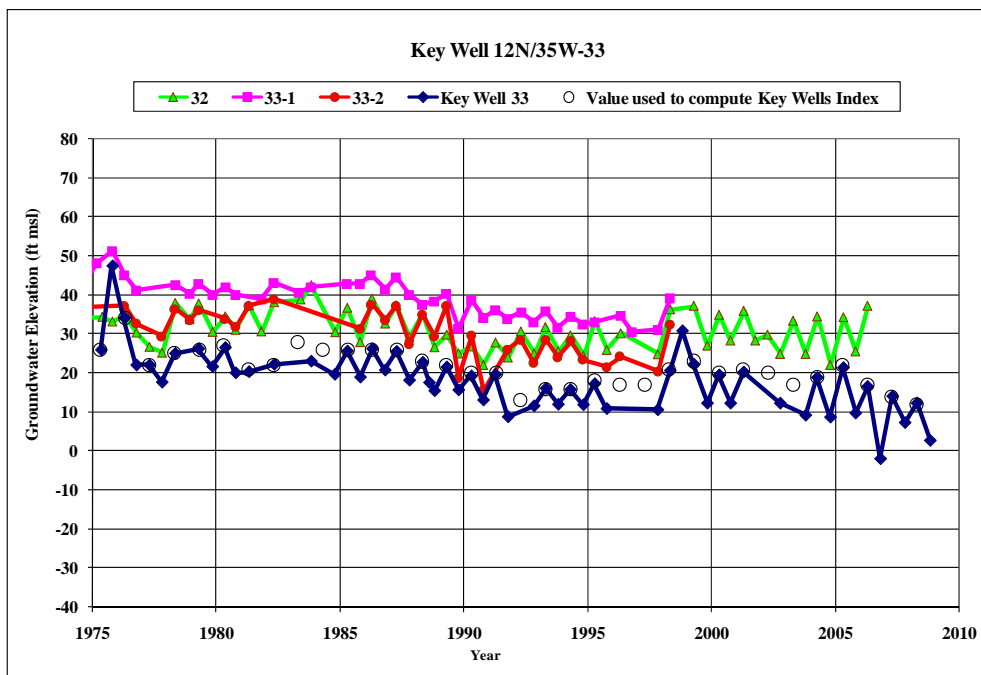
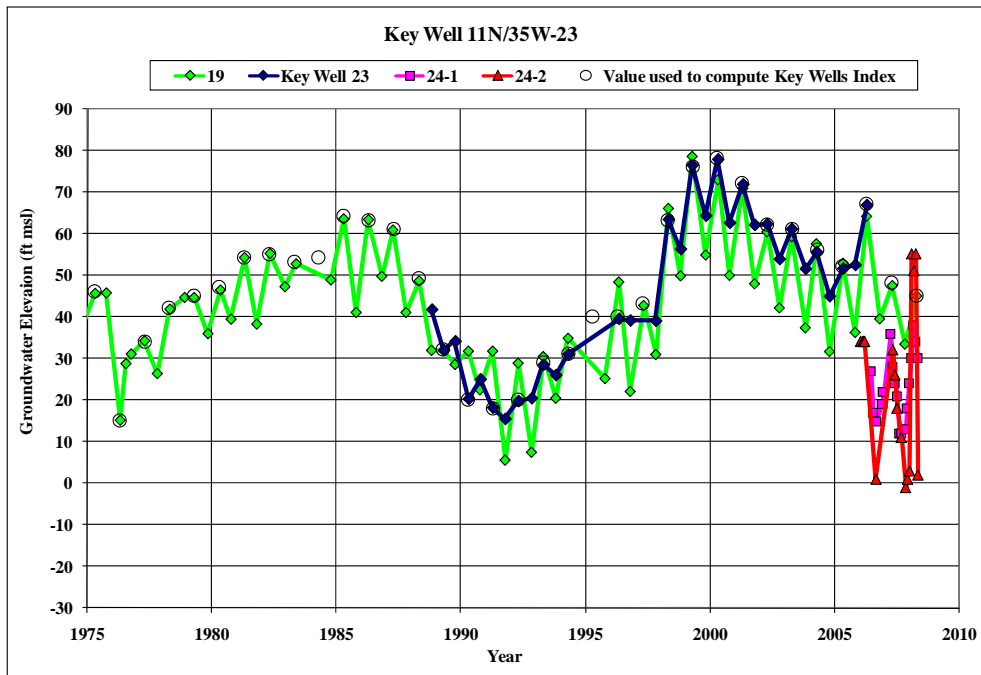
Final 4/13/09



Final 4/13/09



Final 4/13/09



In selecting the eight key wells, the following criteria were applied so that the wells generally represent the NMMA as a whole:

- (1) The wells are geographically distributed.
- (2) No single well overly influences the Index.

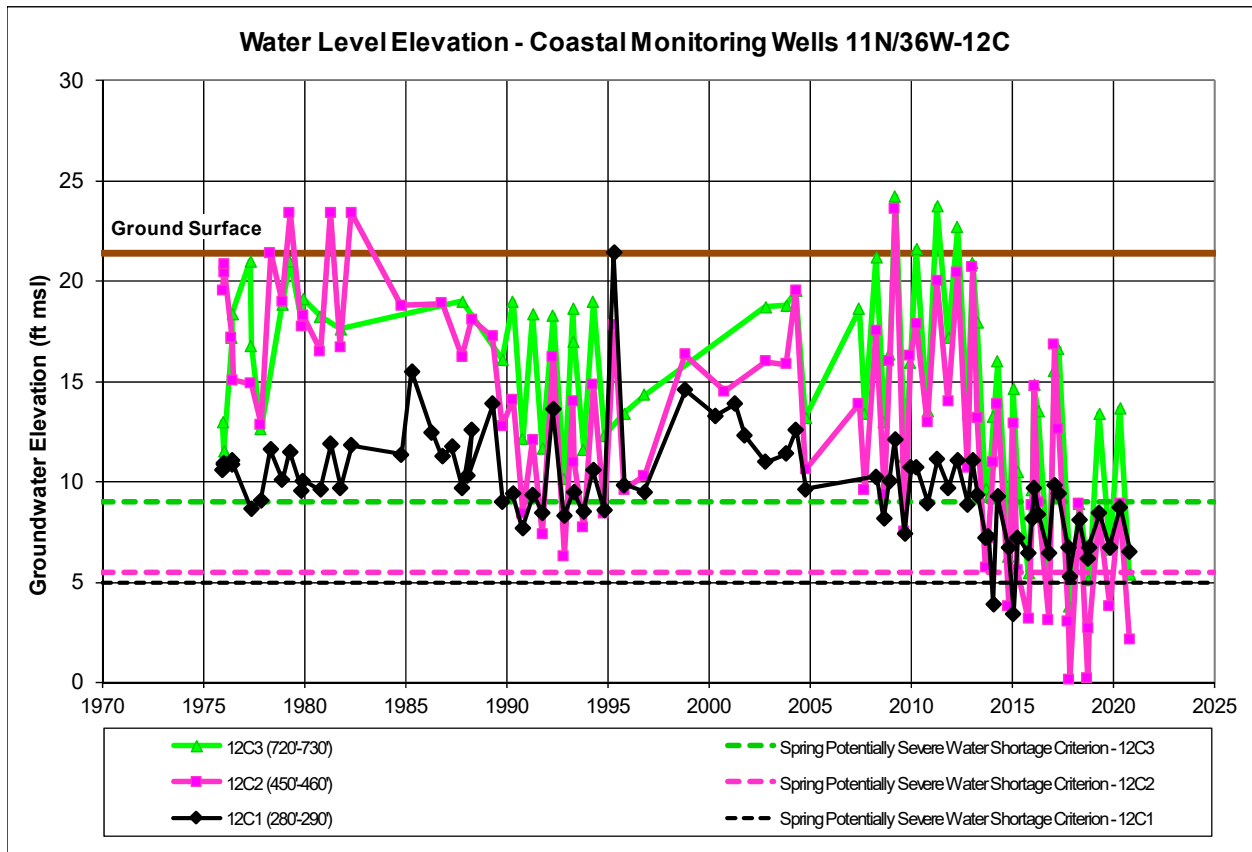


Figure 6-3. Hydrograph for Coastal Monitoring Well Nest 11N/36W-12C Note: Water levels measured under artesian flow prior to 2008 were observed without measuring the hydraulic head and recorded as a default value of 2 feet above the casing.

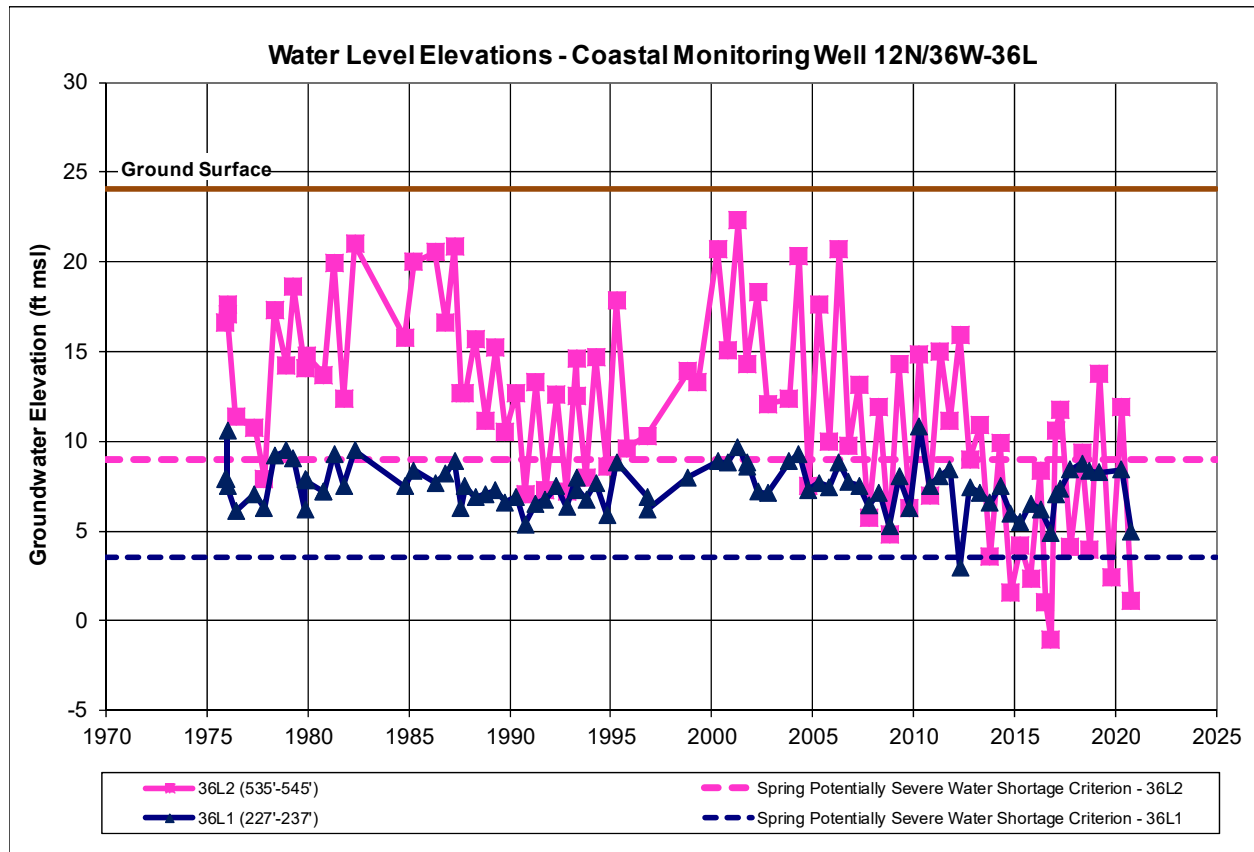


Figure 6-4. Hydrograph for Coastal Monitoring Well Nest 12N/36W-36L

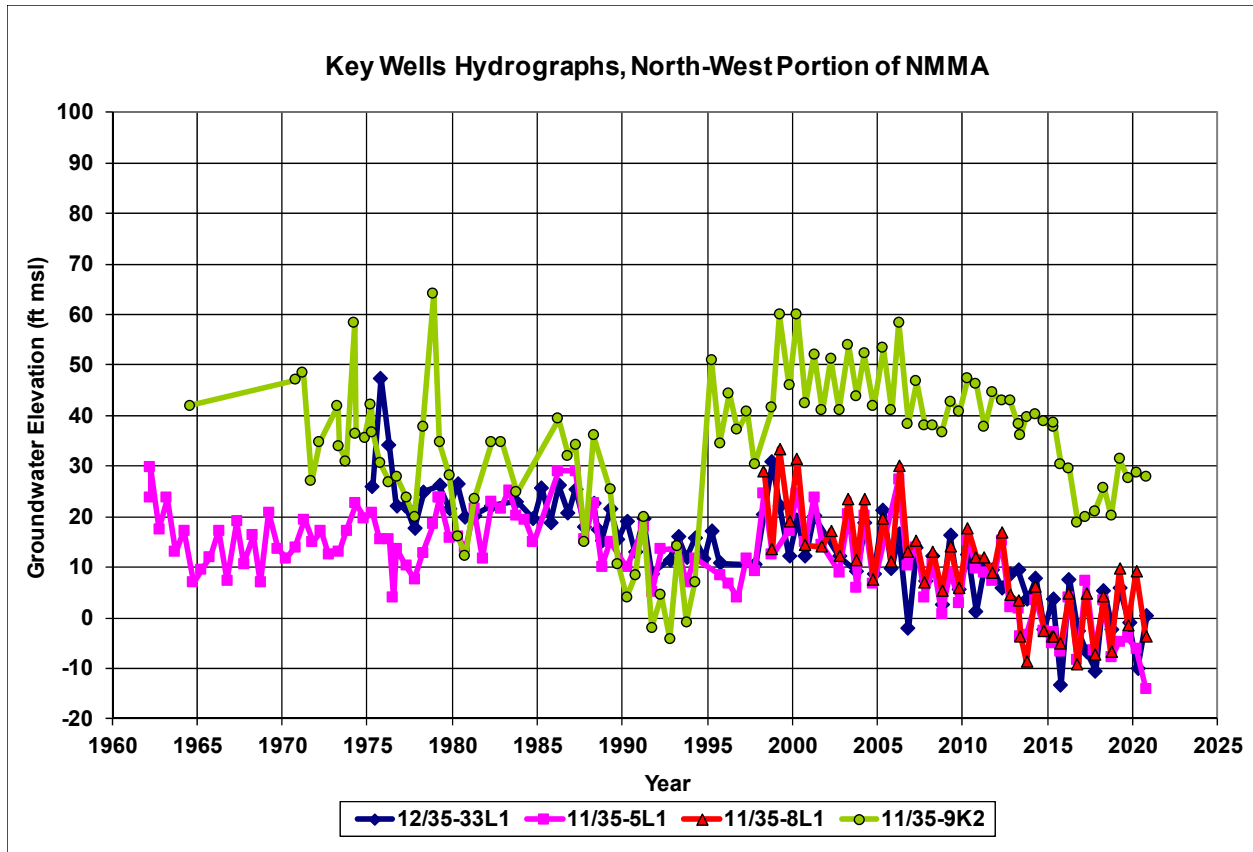


Figure 6-2. Key Wells Hydrographs, North-West Portion of NMMA

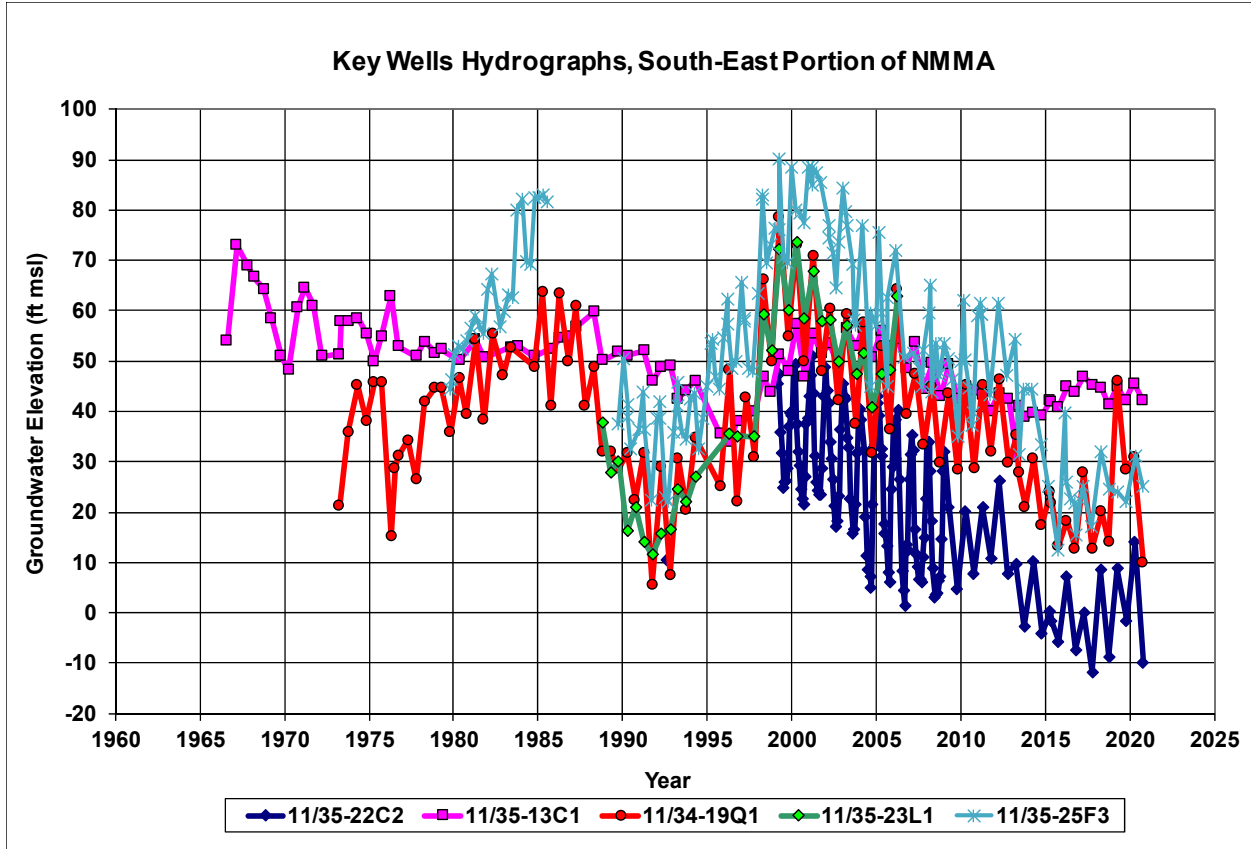


Figure 6-1. Key Wells Hydrographs, South-East Portion of NMMA

Well Maps

Map Excerpts from the NMMA 2020 Annual Report
Section 1.2

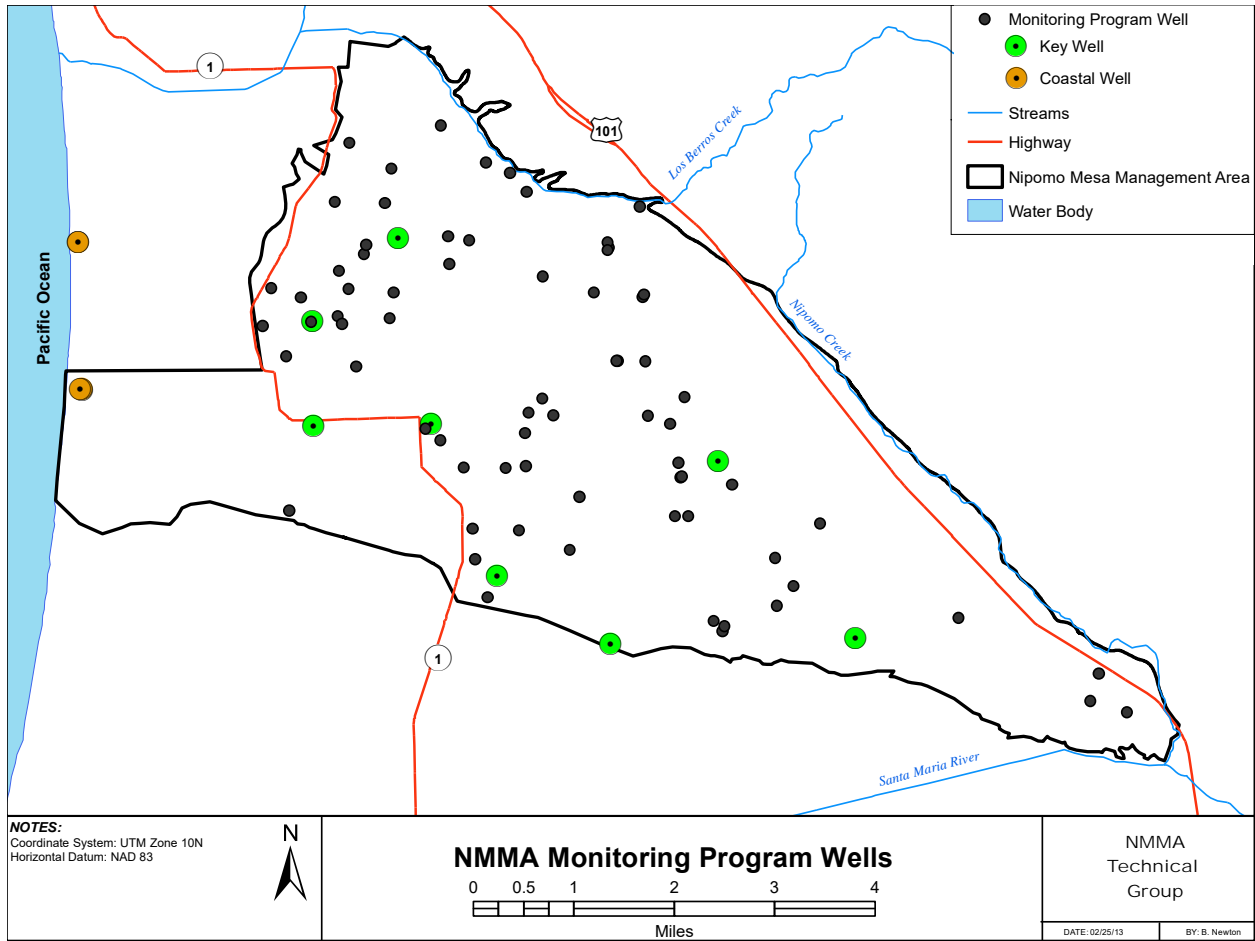


Figure 1-2. Wells identified in the NMMA Monitoring Program (NMMA, 2009)