



**Los Osos Groundwater Basin
Fringe Areas Meeting
July 26, 2017**

Supervisor Gibson, District 2
Wade Horton, Public Works Director
Carolyn Berg, Senior Water Resource Engineer
Catherine Martin, Water Resource Engineer
Spencer Harris, Cleath-Harris Geologists

Topics

- **Welcome & Workshop Format**
- **Opening Remarks**
- **SGMA Overview & Local GSA Formation**
- **Basin Study Efforts**
- **Next Steps**



Opening Remarks:

Supervisor Gibson
&
PW Director Wade Horton



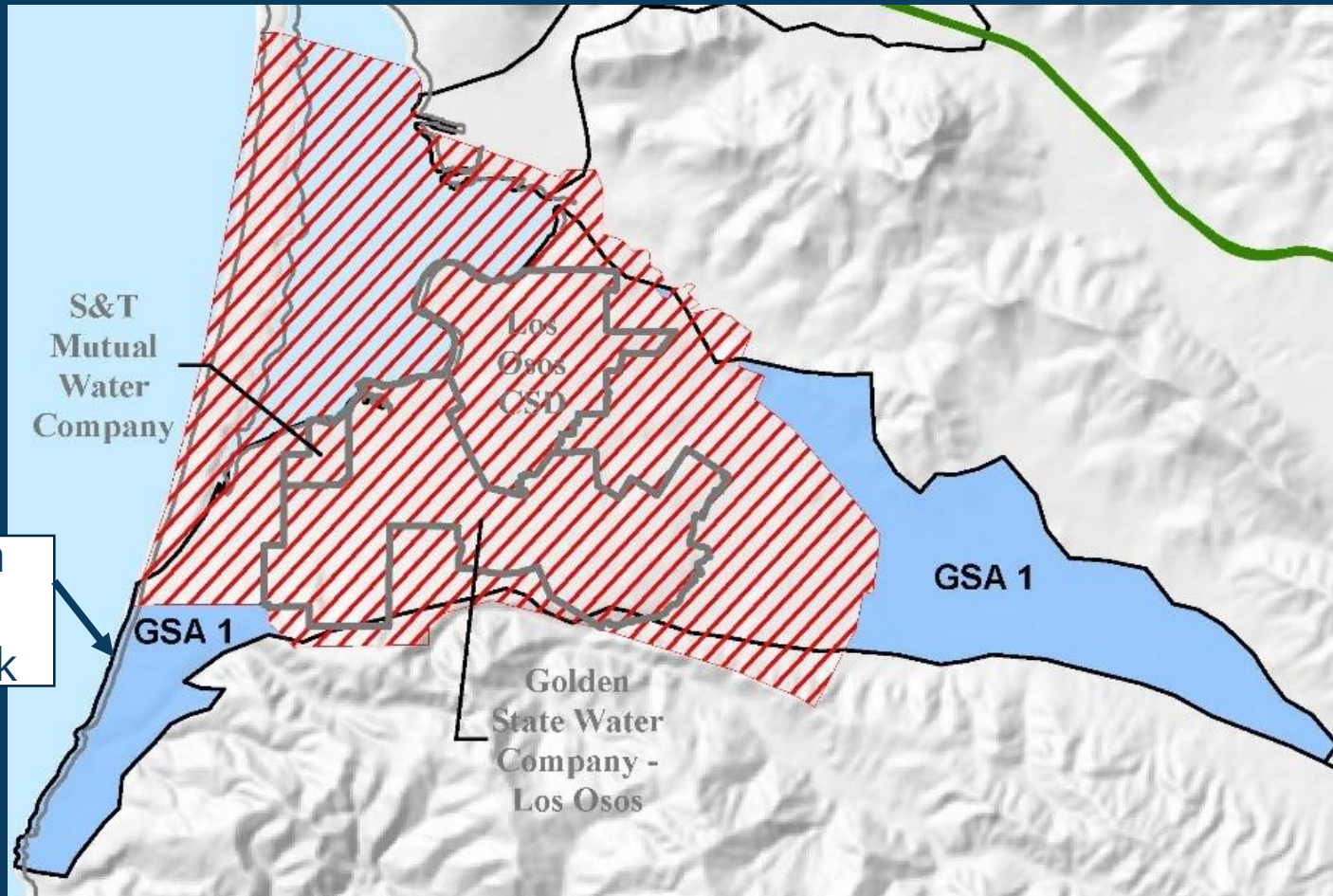
SGMA Overview



COUNTY OF SAN LUIS OBISPO

www.slocounty.ca.gov

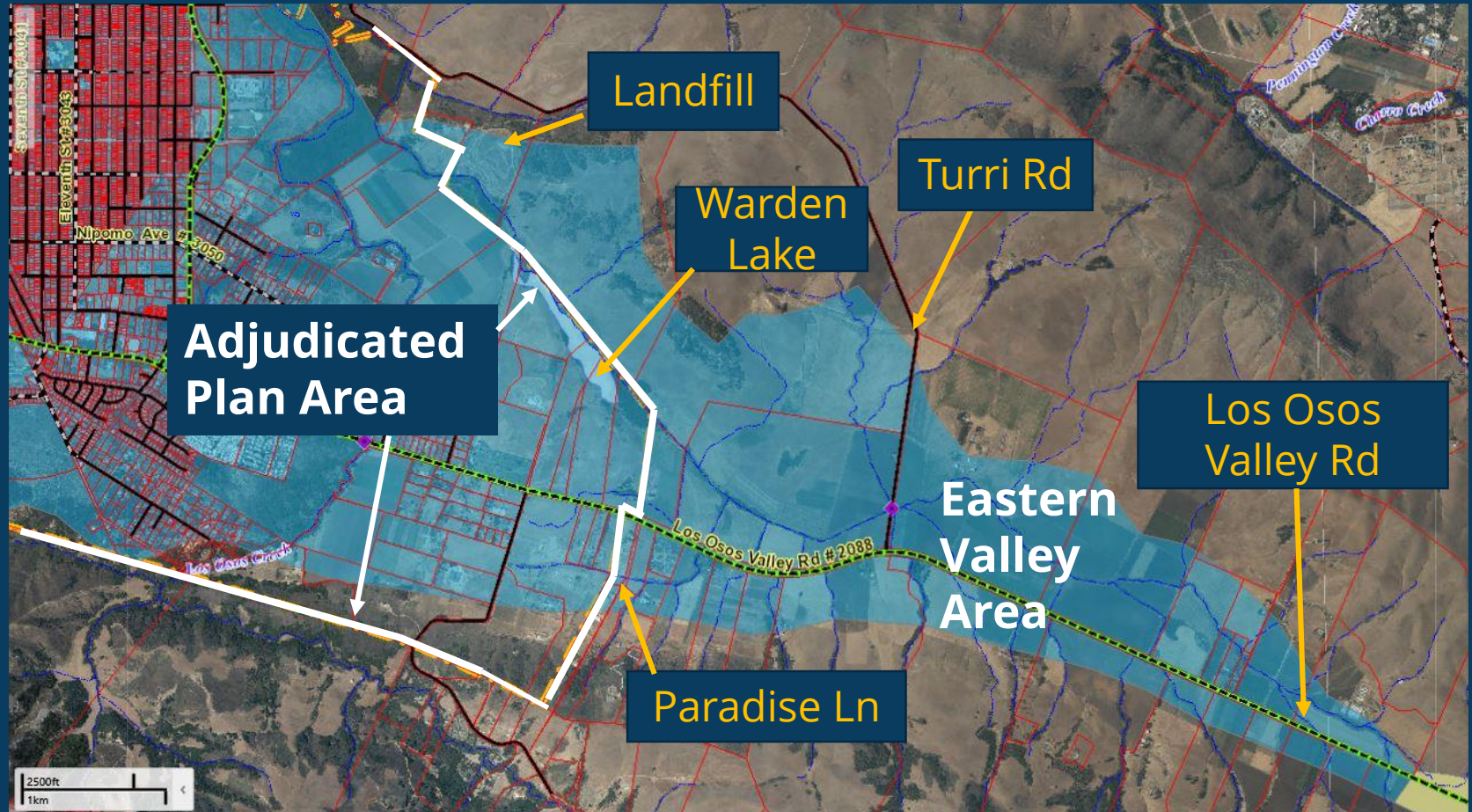
Los Osos Groundwater Basin



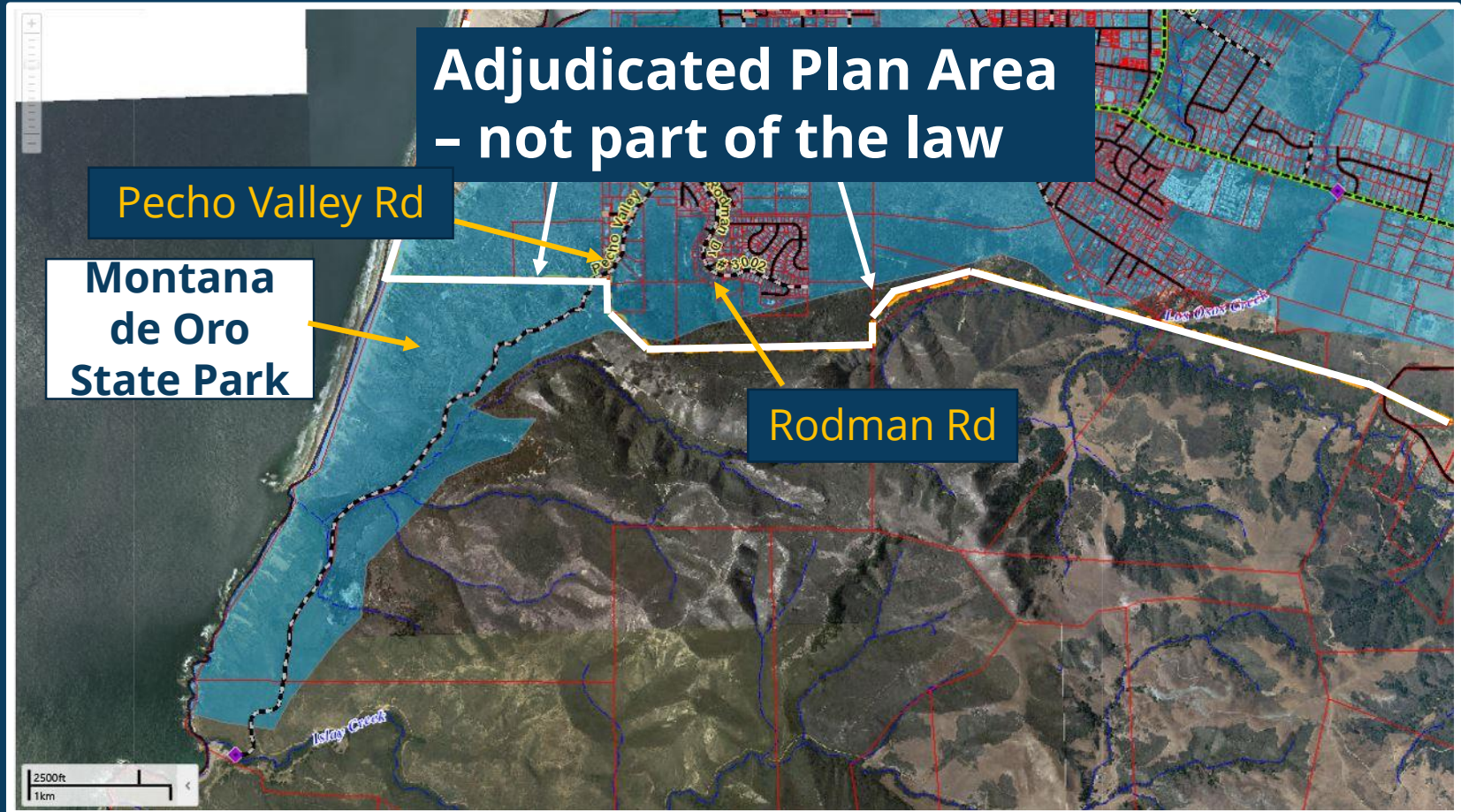
Montana de Oro State Park



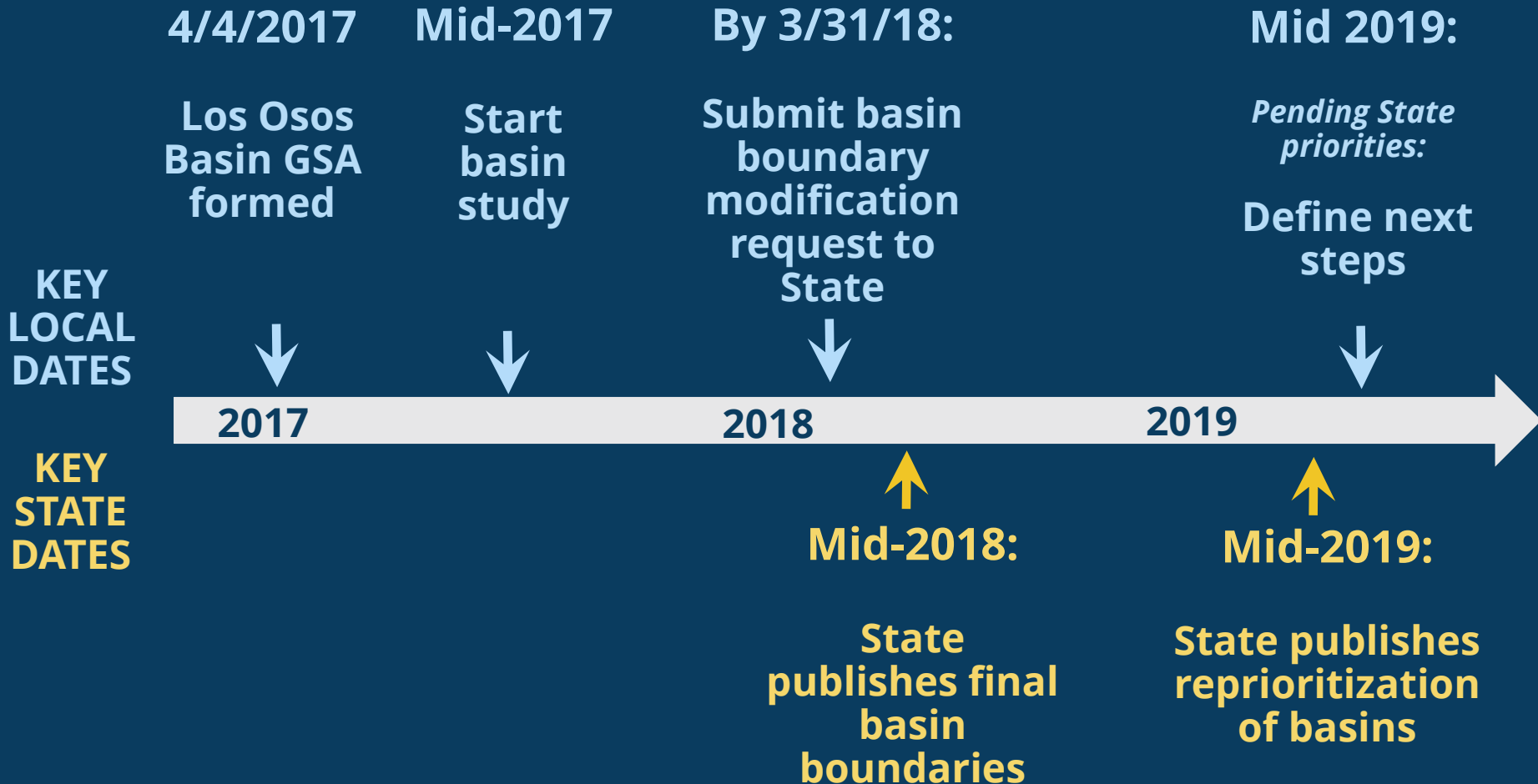
Fringe Area – Eastern Valley Area



Montana de Oro State Park



Boundary Modification Process



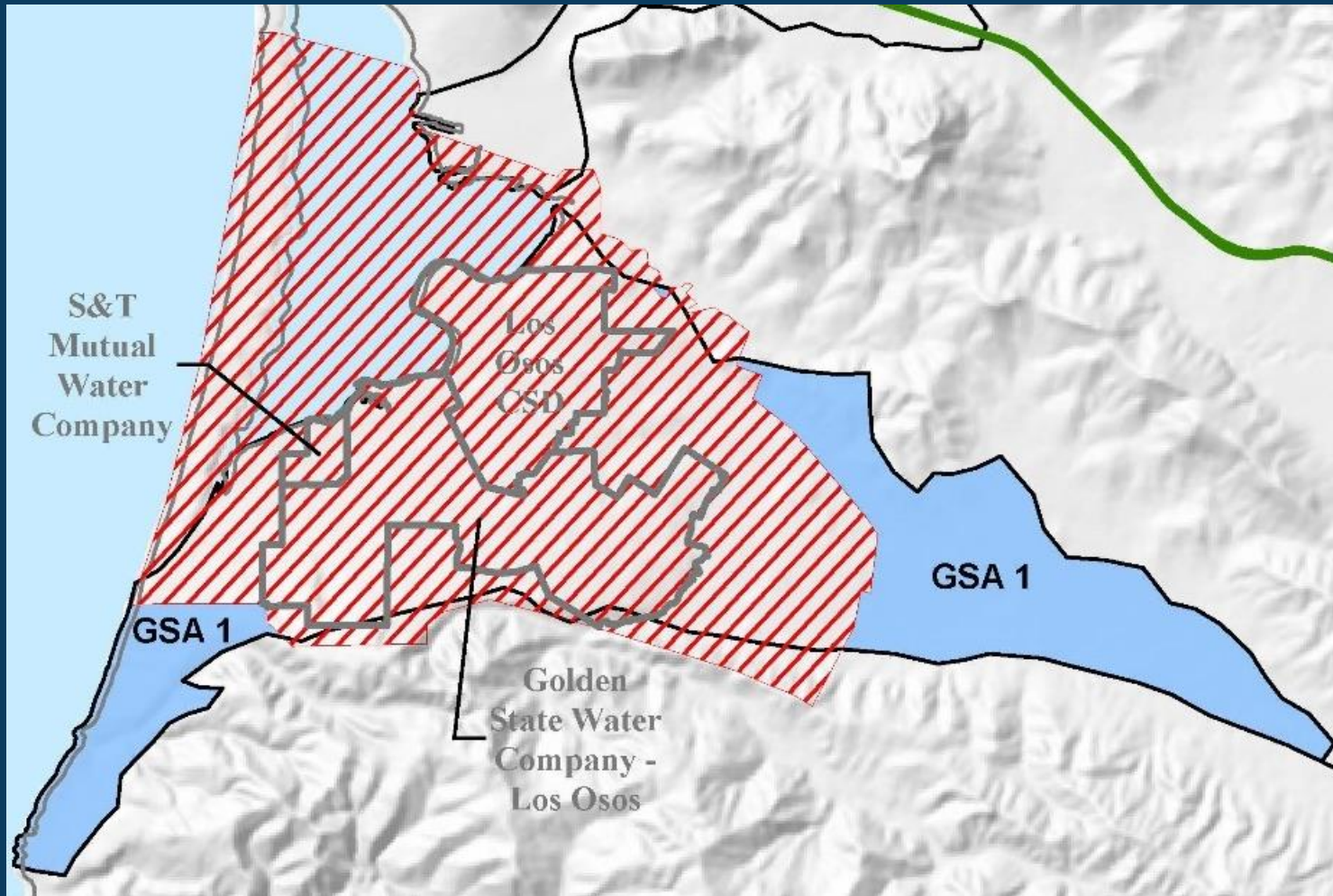
Basin Study Efforts



COUNTY OF SAN LUIS OBISPO

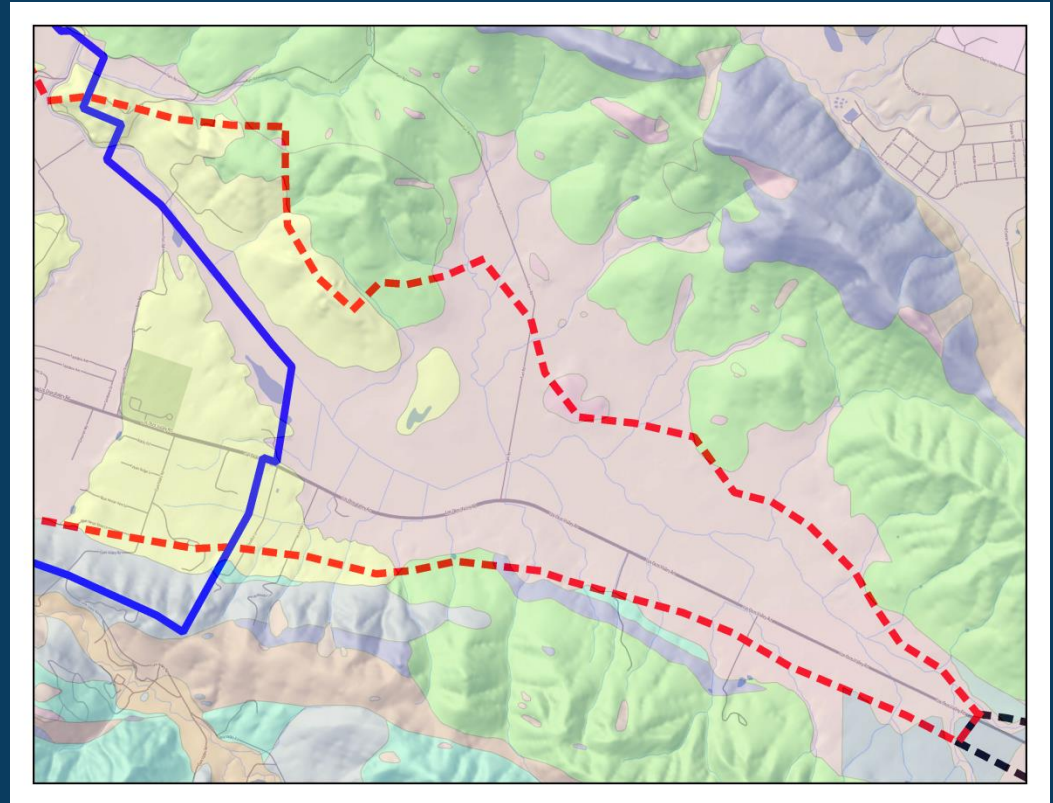
www.slocounty.ca.gov

Los Osos Basin Overview

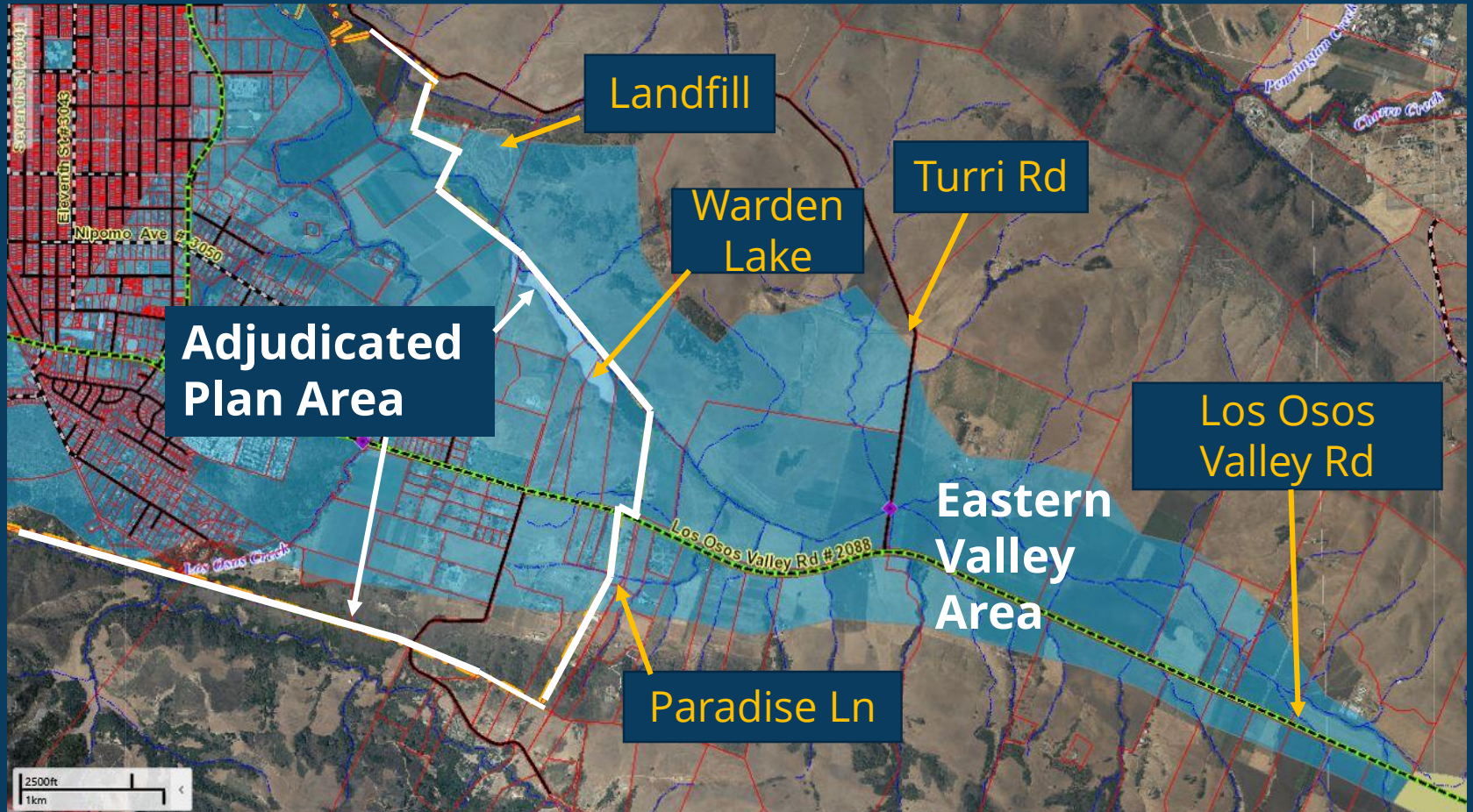


Boundary: Eastern Valley Area

- **Provide the State with adequate data for BBMR**
- **Need your help**



Boundary: Eastern Valley Area



Basin Study: Landowners Participation

INFORMATION

(1) Consent Forms:

- Water Quality Sampling
- Groundwater Levels

(2) Local Landowners:

- Provide any additional well data to help support the study
(i.e., pumping records, water quality data, water level measurements, etc.)

CONSENT FORM FOR WELL ACCESS AND USE OF HYDROLOGIC DATA

LOS OSOS GROUNDWATER BASIN FRINGE AREA

TO: San Luis Obispo County Flood Control and Water Conservation District (District) and County of San Luis Obispo (County)

FROM: Well/Water System Owner: _____ Phone: _____

In order to provide helpful data for the groundwater characterization study for the groundwater basin in which my well(s)/water system is located, I consent to the following:

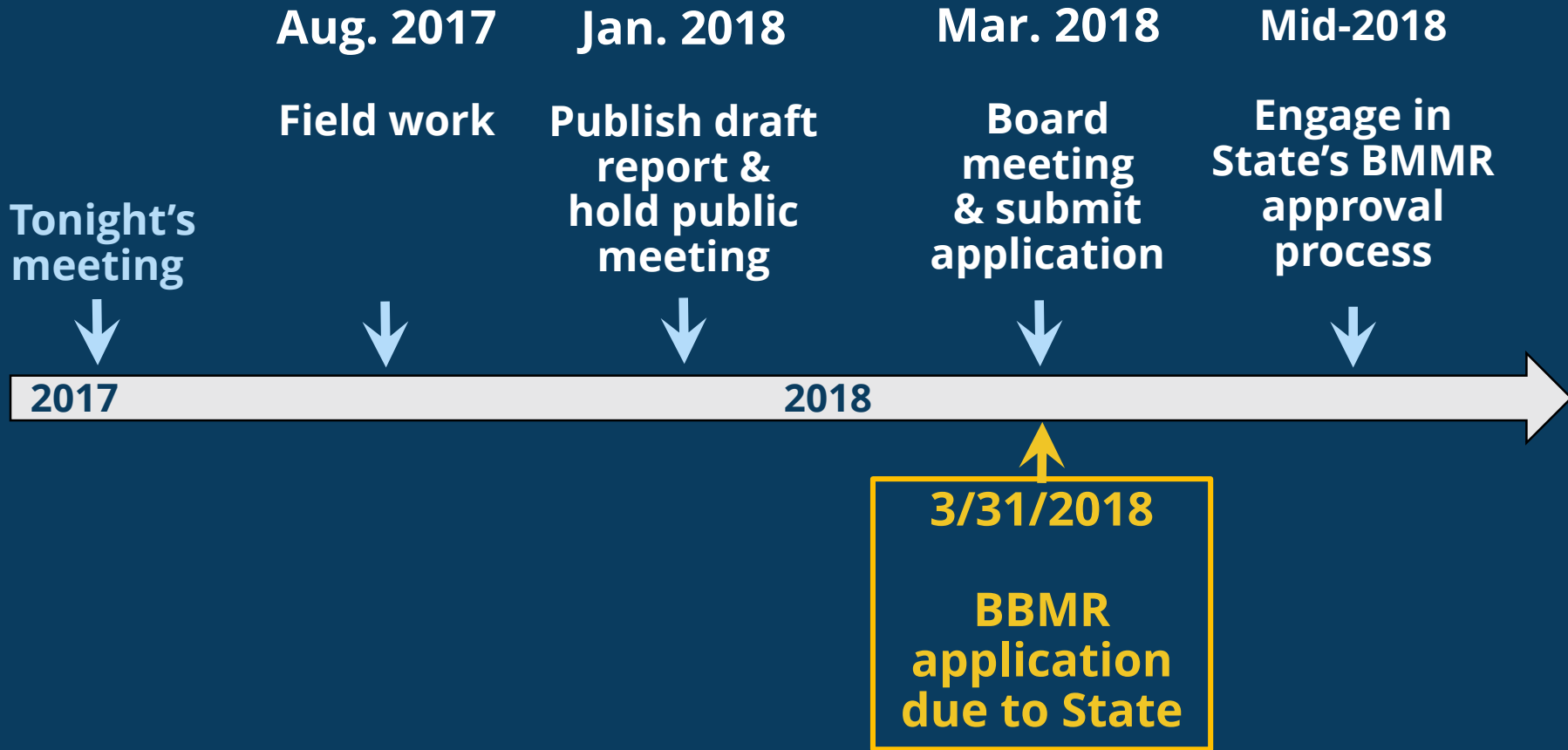
The District and the County, including but not limited to, when acting in its capacity as the Los Osos Groundwater Basin Fringe Area Groundwater Sustainability Agency (GSA), can use for any purpose and release to any individual all Hydrologic Data provided to County or District by Owner. In addition, the County, District and their consultants is hereby granted access to the participating well(s)/water system for purposes of collecting Hydrologic Data.

I understand that Hydrologic Data includes, without limitation:

- Water level measurements
- Water quality measurements
- State Well Number
- Well GPS coordinates
- Pump test results
- Water production data
- Well construction information



Boundary Modification Schedule



COUNTY
OF SAN LUIS
OBISPO

COUNTY OF SAN LUIS OBISPO

www.slocounty.ca.gov

Questions



COUNTY OF SAN LUIS OBISPO

www.slocounty.ca.gov

Thank you

Please contact for
Cathy Martin
cmmartin@co.slo.ca.us
(805) 781-5275

County's SGMA website
<http://slocountywater.org/sgma> and sign up with our
emailing list for the Los Osos Valley Basin.

