



**Los Osos Groundwater Basin Fringe Areas
Meeting: Summary of Basin Study
March 26, 2018**

Supervisor Gibson, District 2
Carolyn Berg, Senior Water Resource Engineer
Catherine Martin, Water Resource Engineer
Spencer Harris, Cleath-Harris Geologists

Opening Remarks



WHY ARE WE HERE?

- **SGMA Overview**
- **Potential Basin Boundary Modification / Basin Characterization Study**
- **Next Steps**



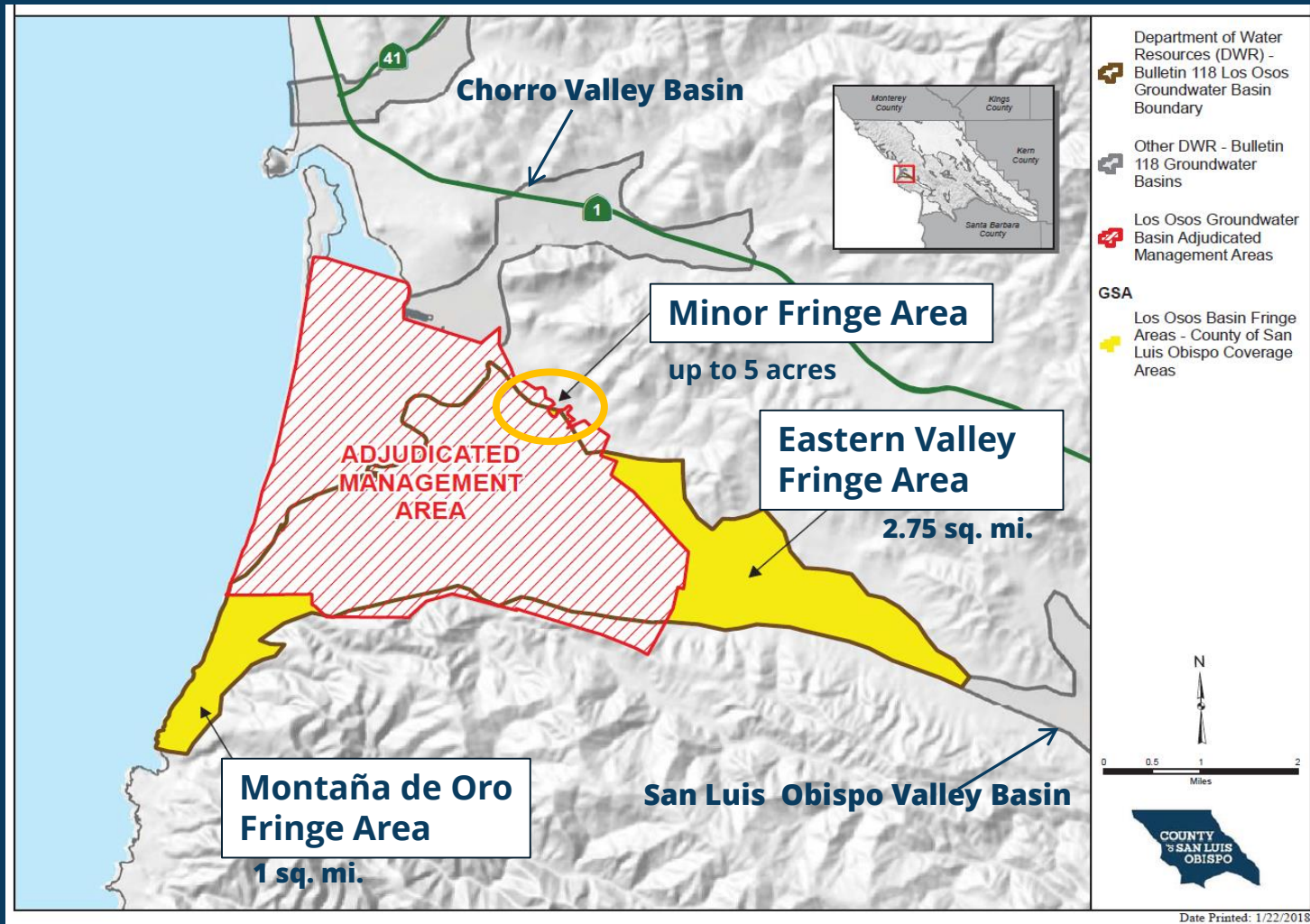
SGMA Overview



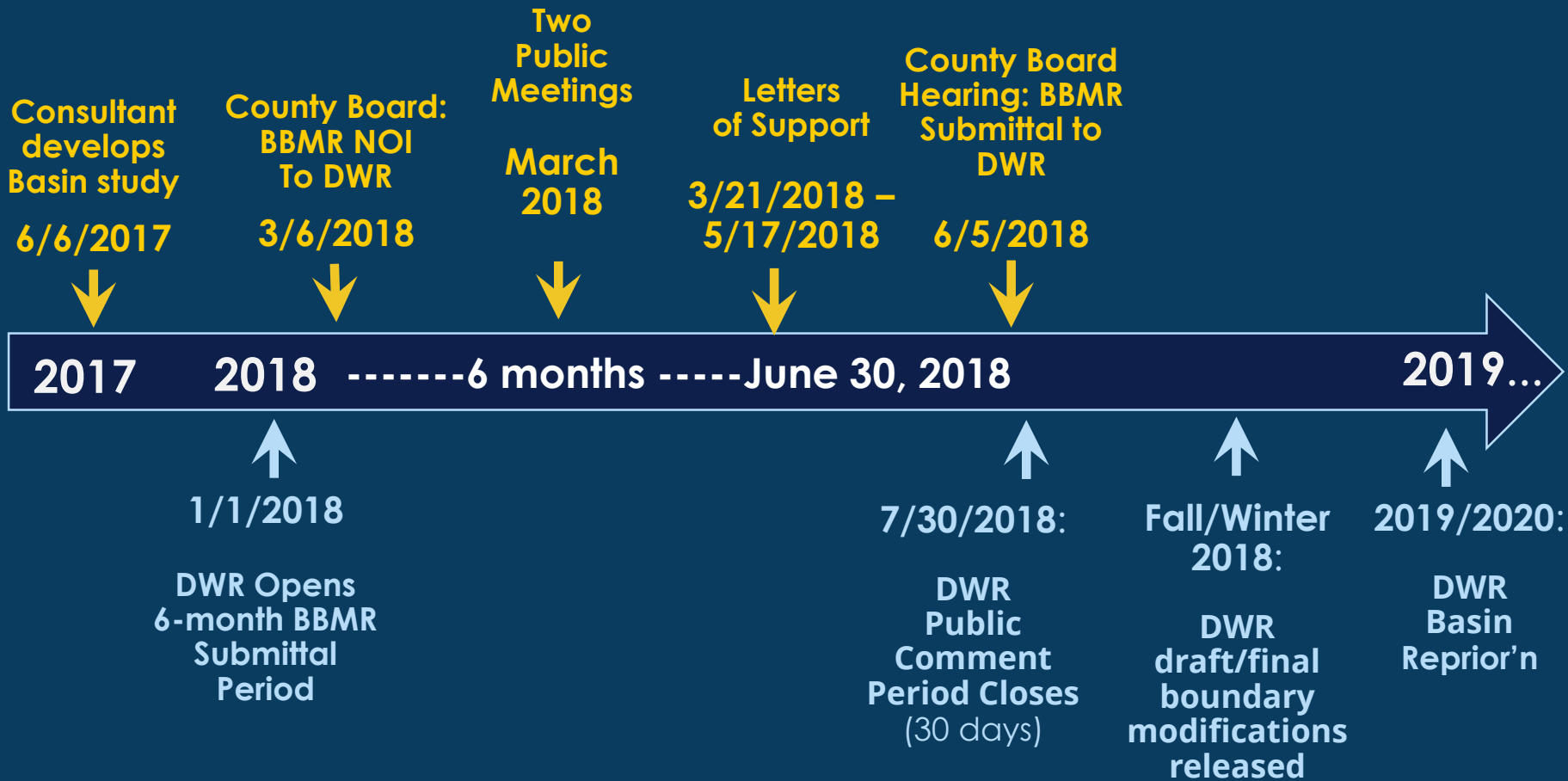
COUNTY OF SAN LUIS OBISPO

www.slocounty.ca.gov

Los Osos Groundwater Management Overview



Key Milestones



COUNTY OF
 SAN LUIS
 OBISPO

COUNTY OF SAN LUIS OBISPO

www.slocounty.ca.gov

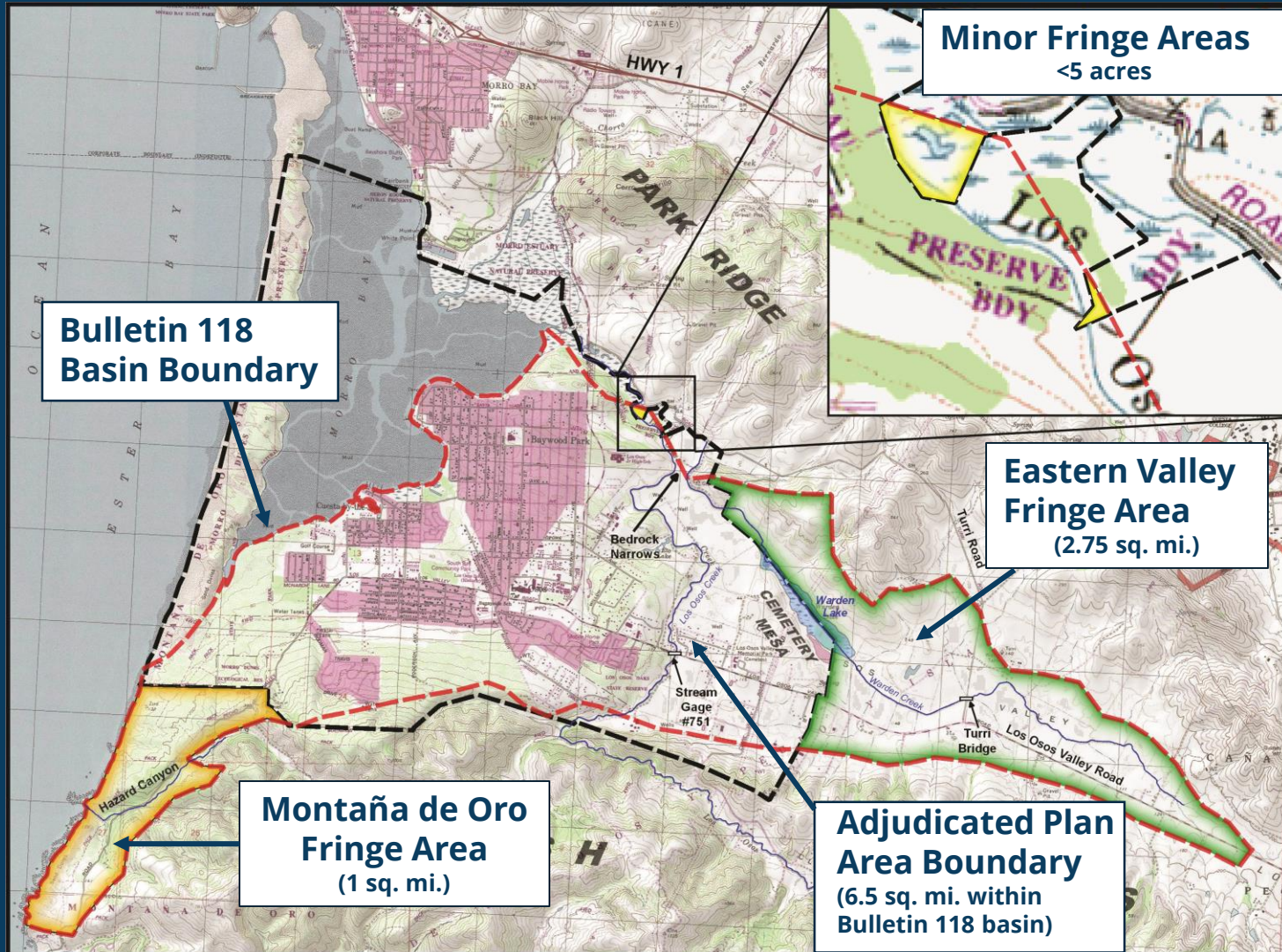
Basin Study Efforts



COUNTY OF SAN LUIS OBISPO

www.slocounty.ca.gov

Los Osos Fringe Area Project Overview



Los Osos Fringe Area Project Overview

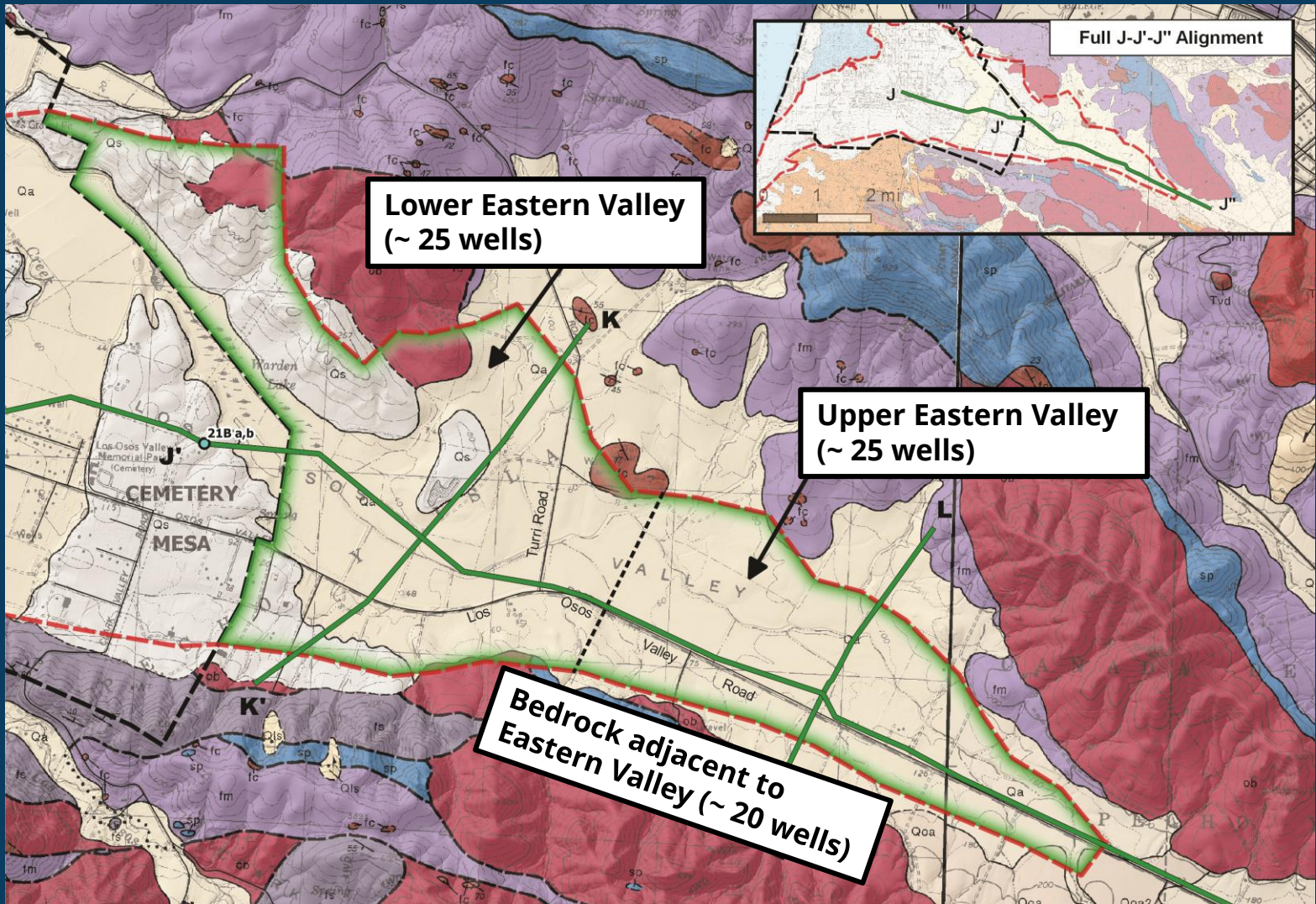


Fringe Area Aquifers

Geologic Unit		Time Scale MYA	Adjudicated Plan Area	Eastern Valley Fringe Area	Montaña de Oro Fringe Area	Minor Fringe Areas
Recent Alluvium Dune / Beach Sand	Qa / Qs	0.01 Holocene Pleistocene	Alluvial Aquifer	Alluvial Aquifer	Dune Sand Aquifer (mostly unsaturated)	Alluvial Aquifer under (estuarine influence)
Older Alluvium Older Dune Sand	Qoa		Aquifer Zones A,B & C	Basin Aquifer Zones A, B, C, D & E not present outside of Adjudicated Plan Area.		
Paso Robles Formation	Qpr		Aquifer Zones C,D & E			
Careaga Formation	Tca	1.8 Pliocene	Aquifer Zone E			



Eastern Valley Fringe Area Scientific Support

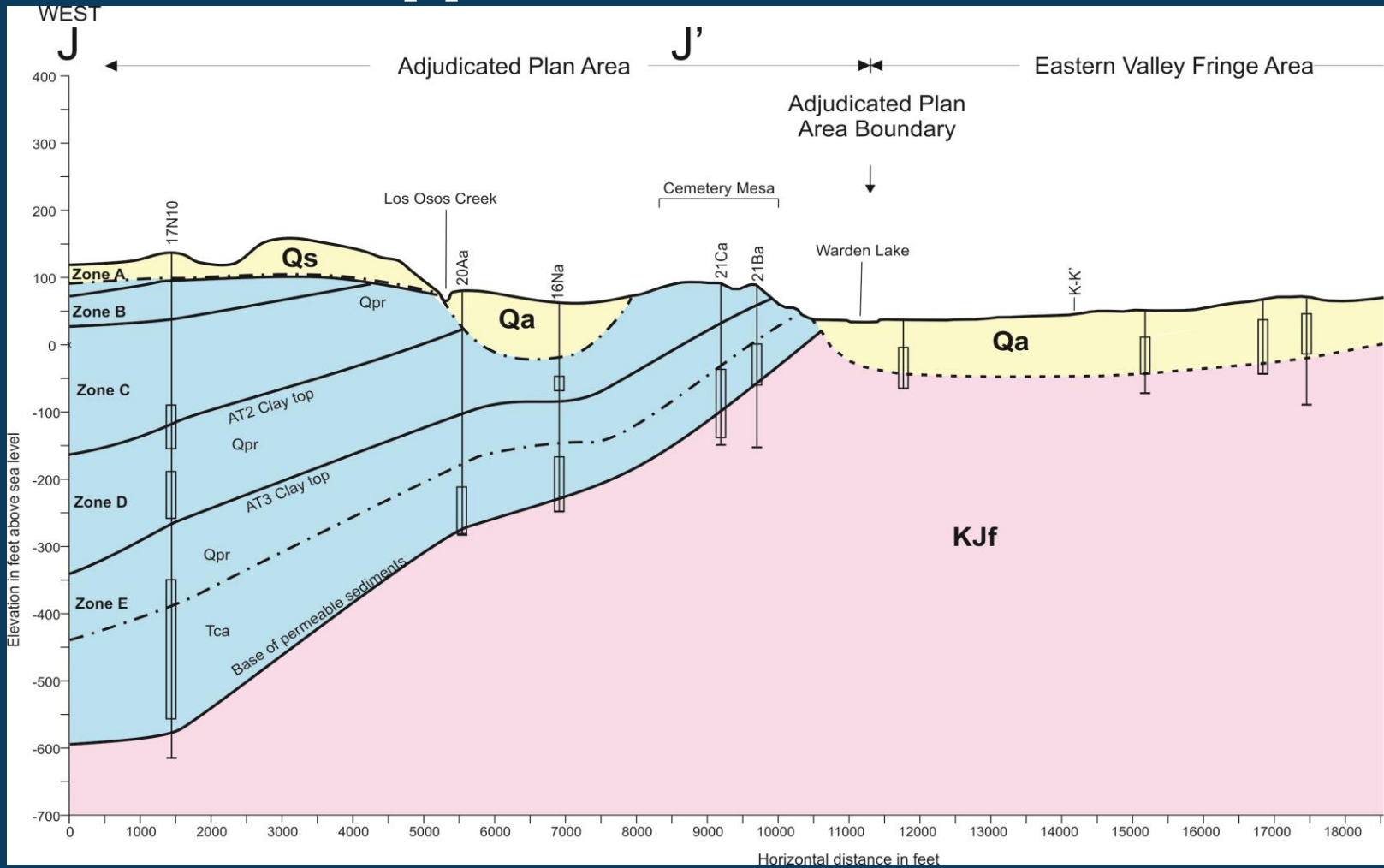


**Lower Eastern Valley
(~ 25 wells)**

**Upper Eastern Valley
(~ 25 wells)**

**Bedrock adjacent to
Eastern Valley (~ 20 wells)**

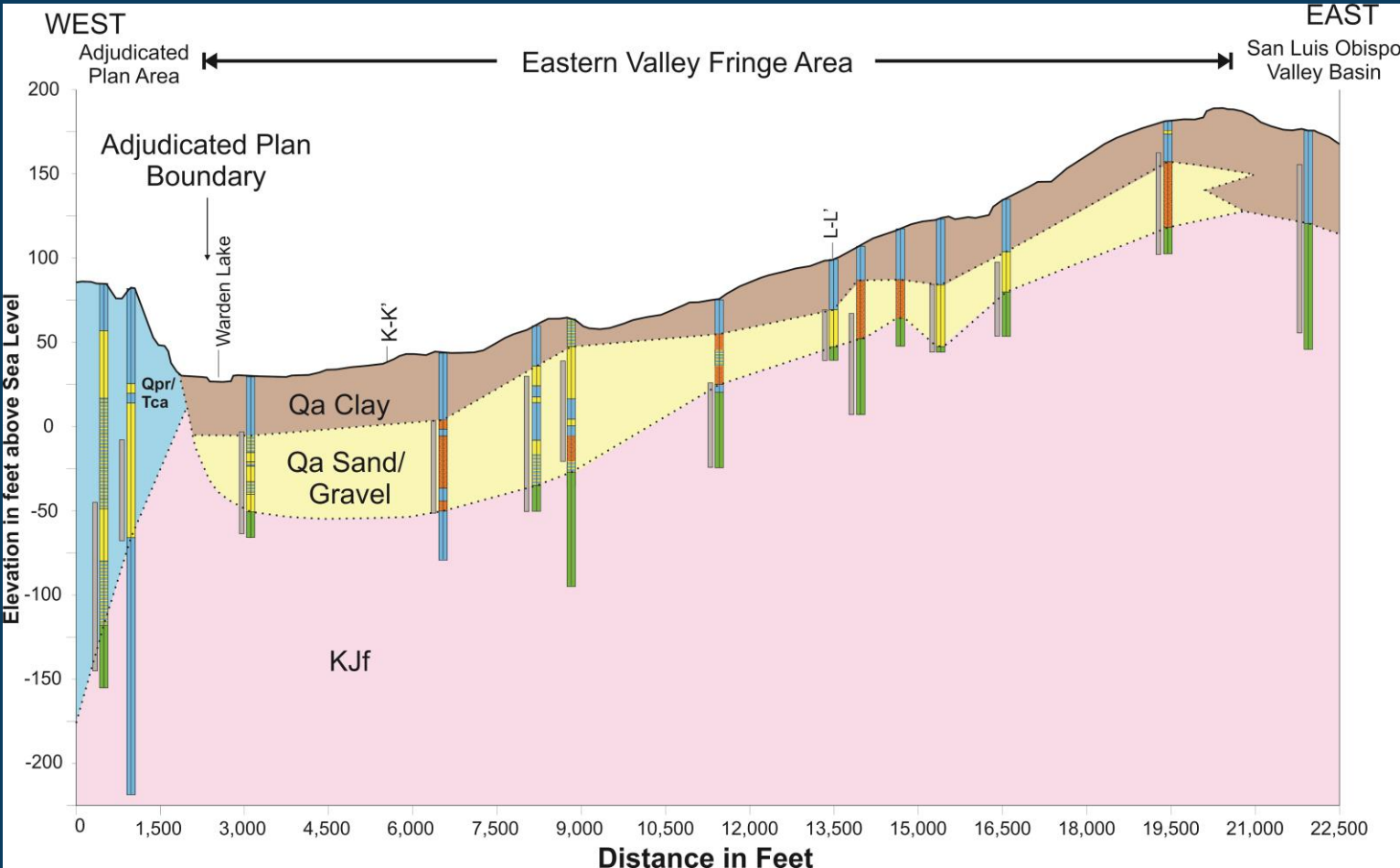
Eastern Valley Fringe Area Scientific Support



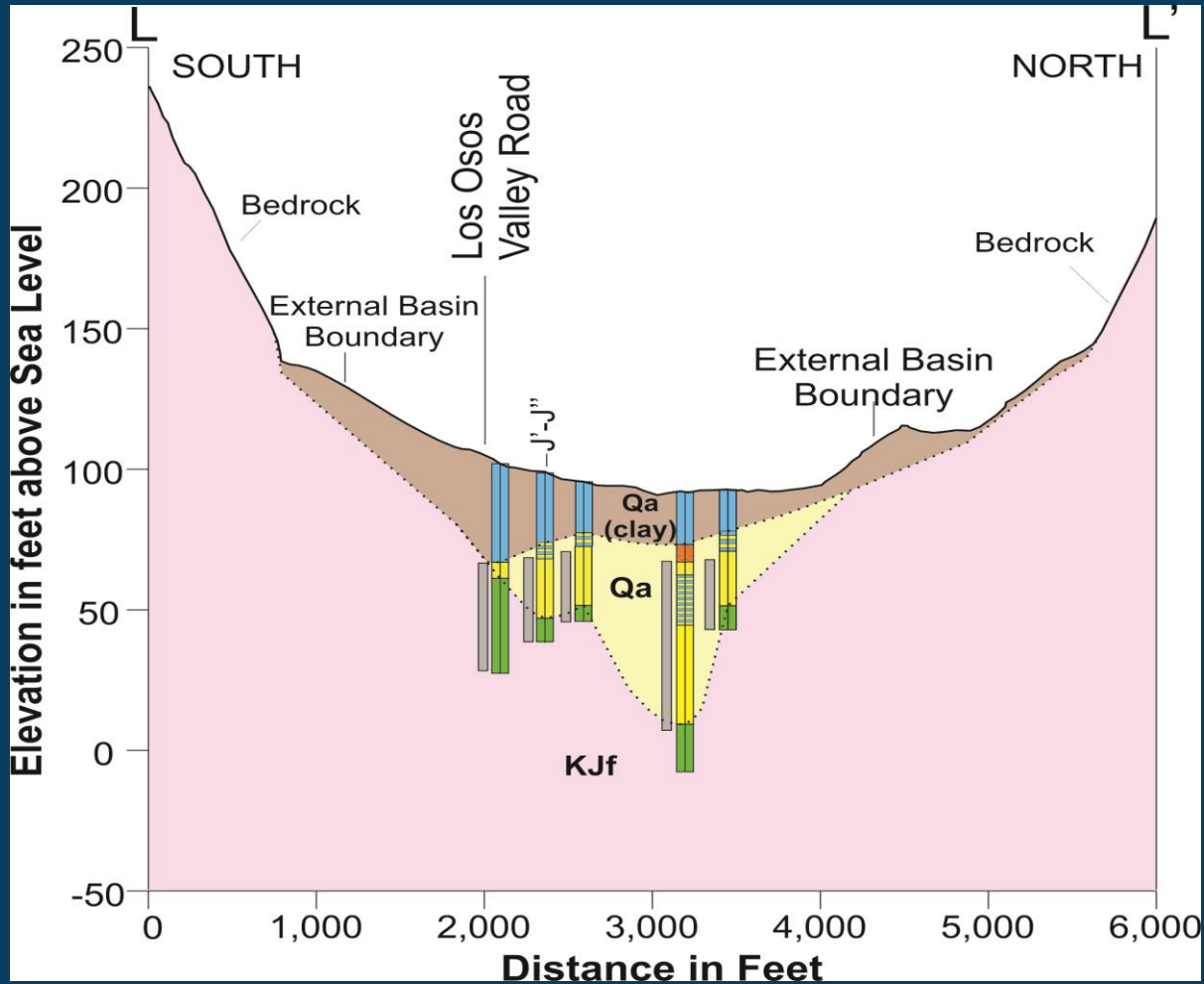
Cemetery Mesa Aerial Image



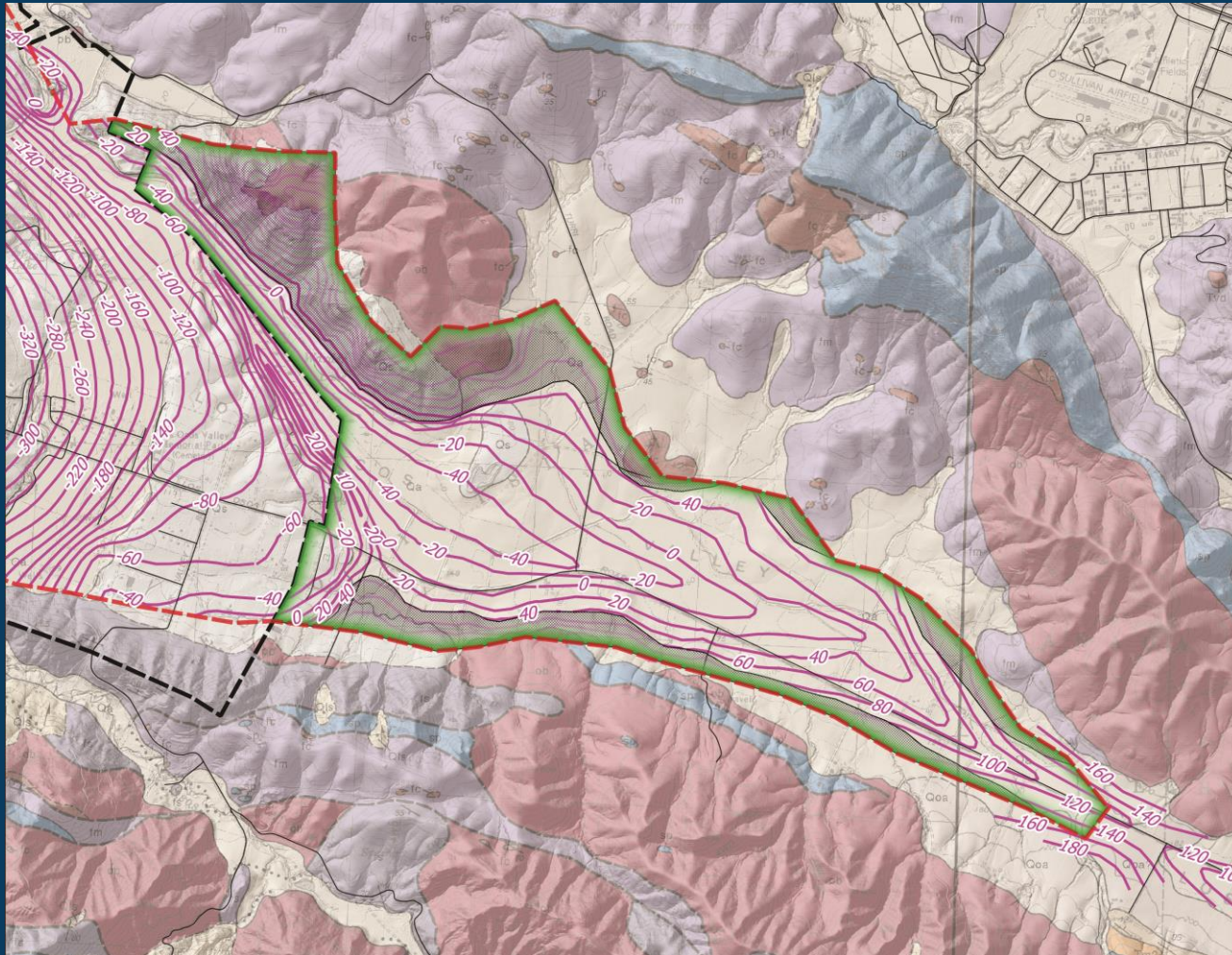
Eastern Valley Fringe Area Base of Permeable Sediments



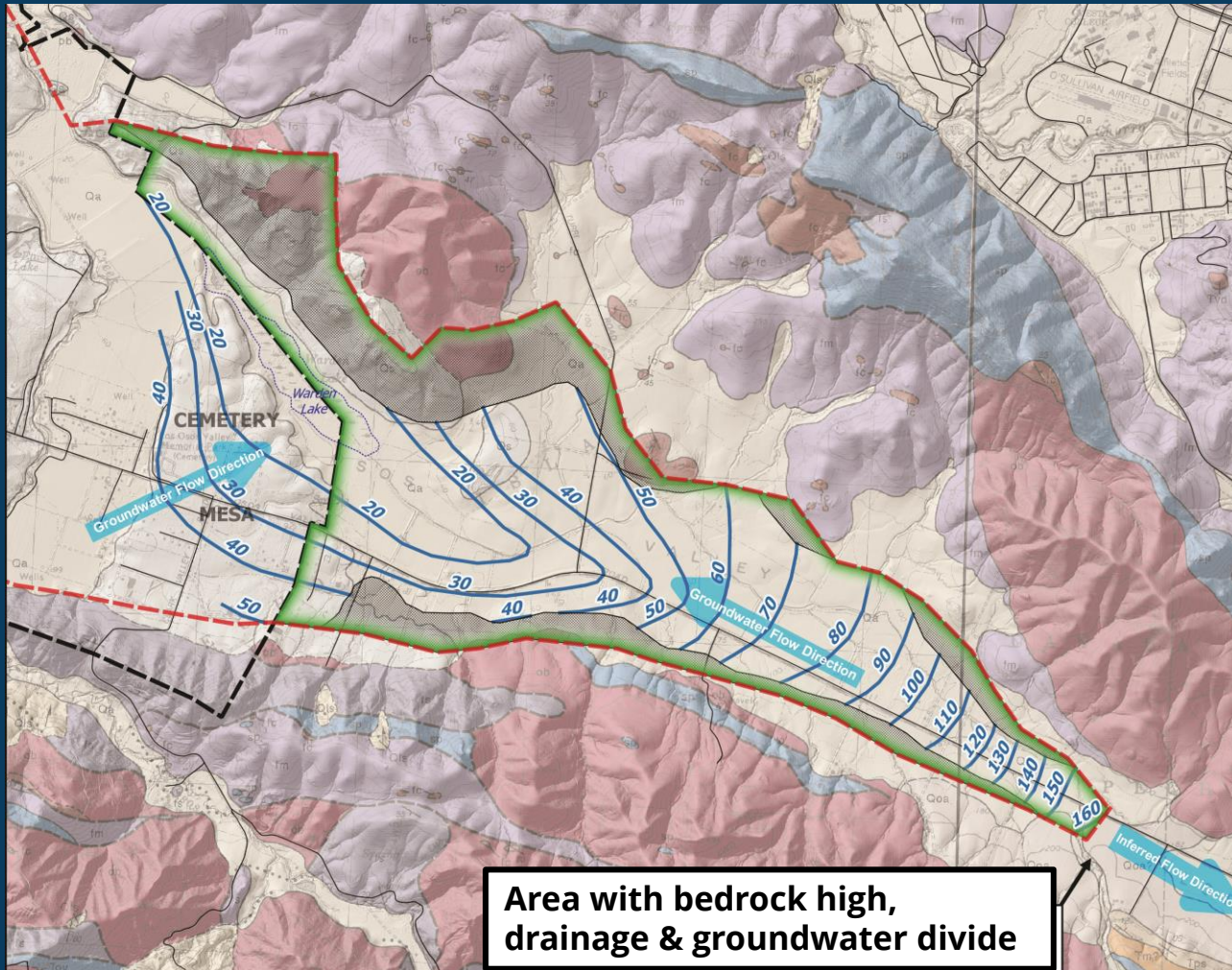
Eastern Valley Fringe Area Base of Permeable Sediments



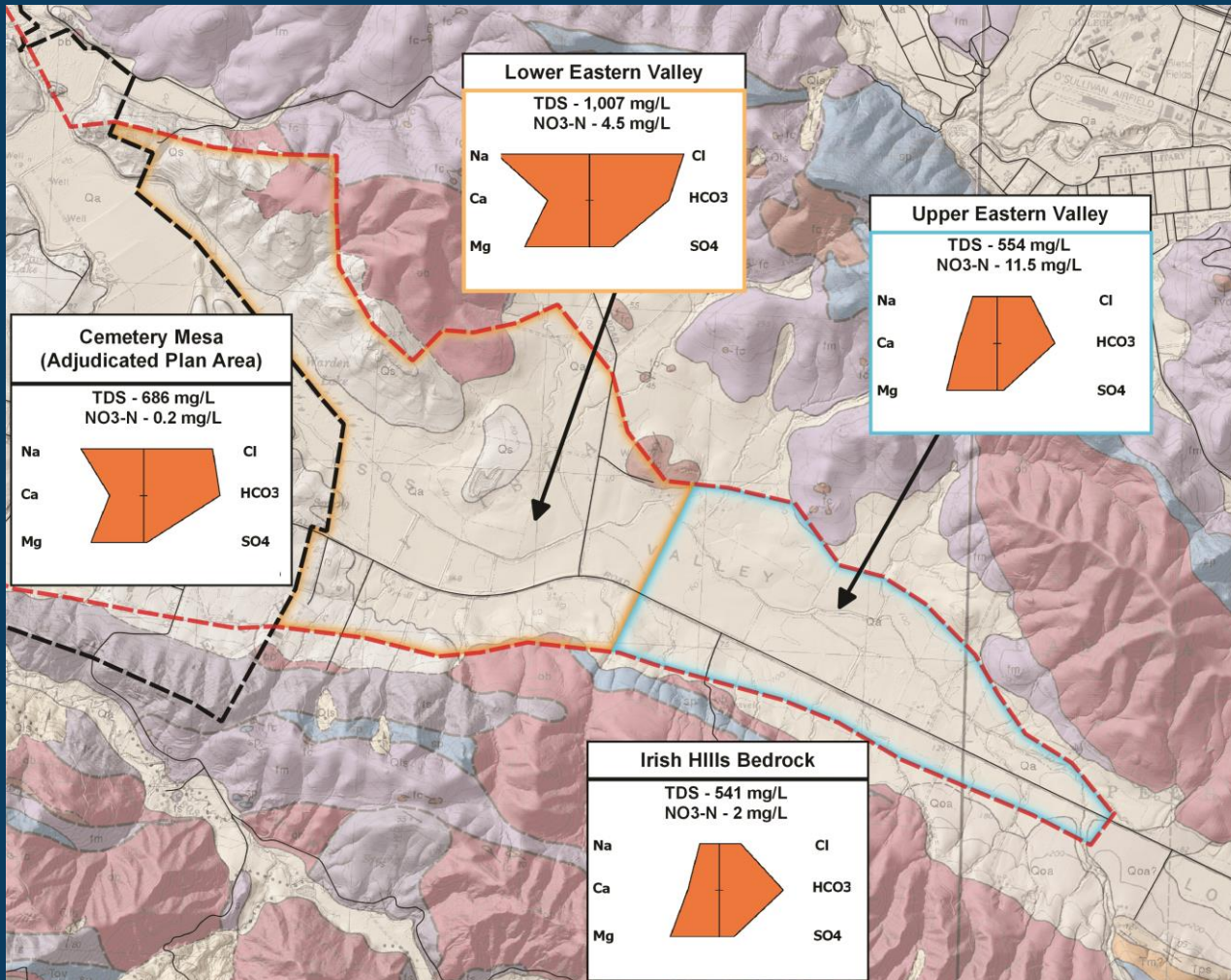
Eastern Valley Fringe Area Base of Permeable Sediments



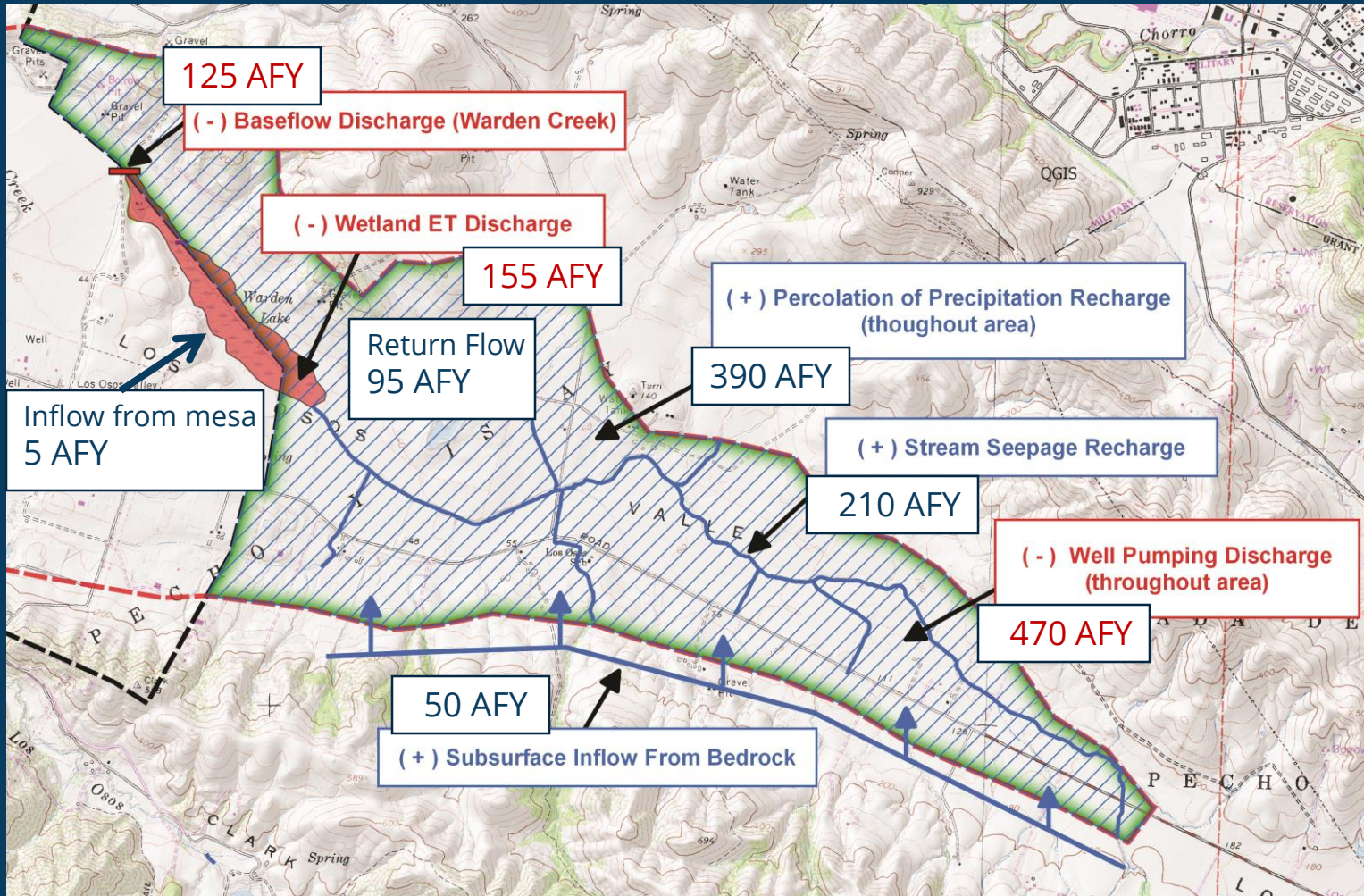
Eastern Valley Fringe Area Groundwater Elevation Contours



Eastern Valley Fringe Area Water Quality

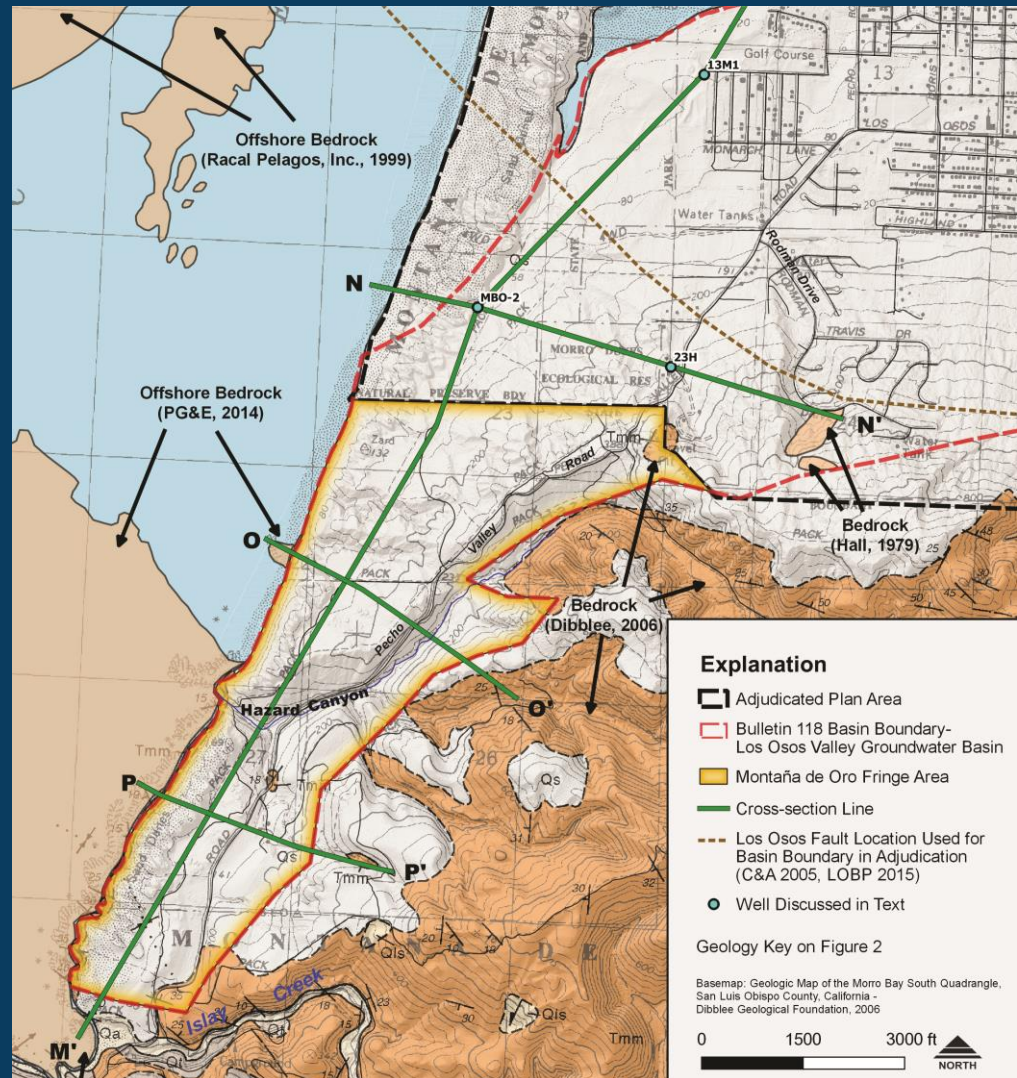


Eastern Valley Fringe Area Preliminary Water Balance

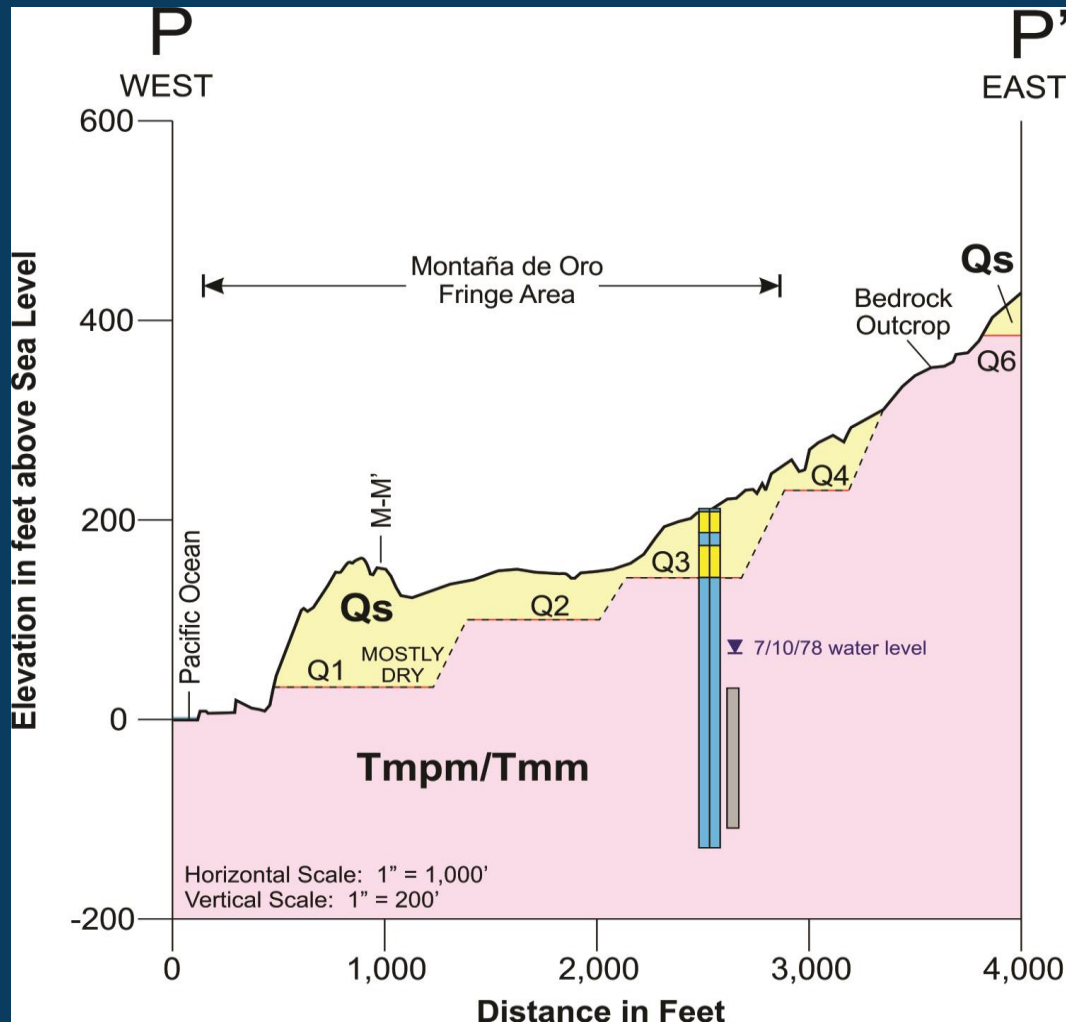


Montaña de Oro Fringe Area - Overview

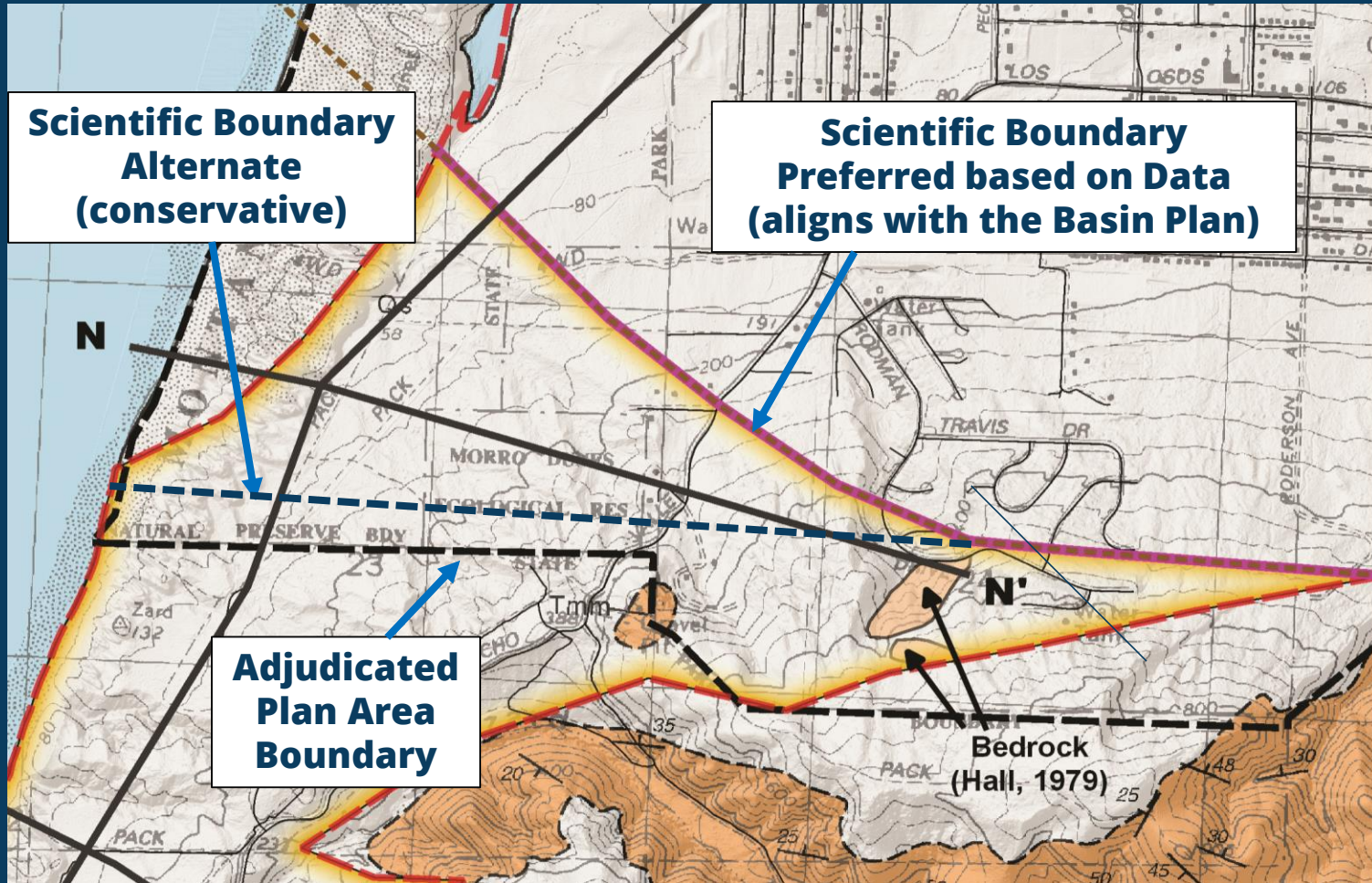
- Montaña de Oro State Park
- Dune Sands/Terrace deposits on bedrock
- Los Osos fault zone is hydrogeologic barrier



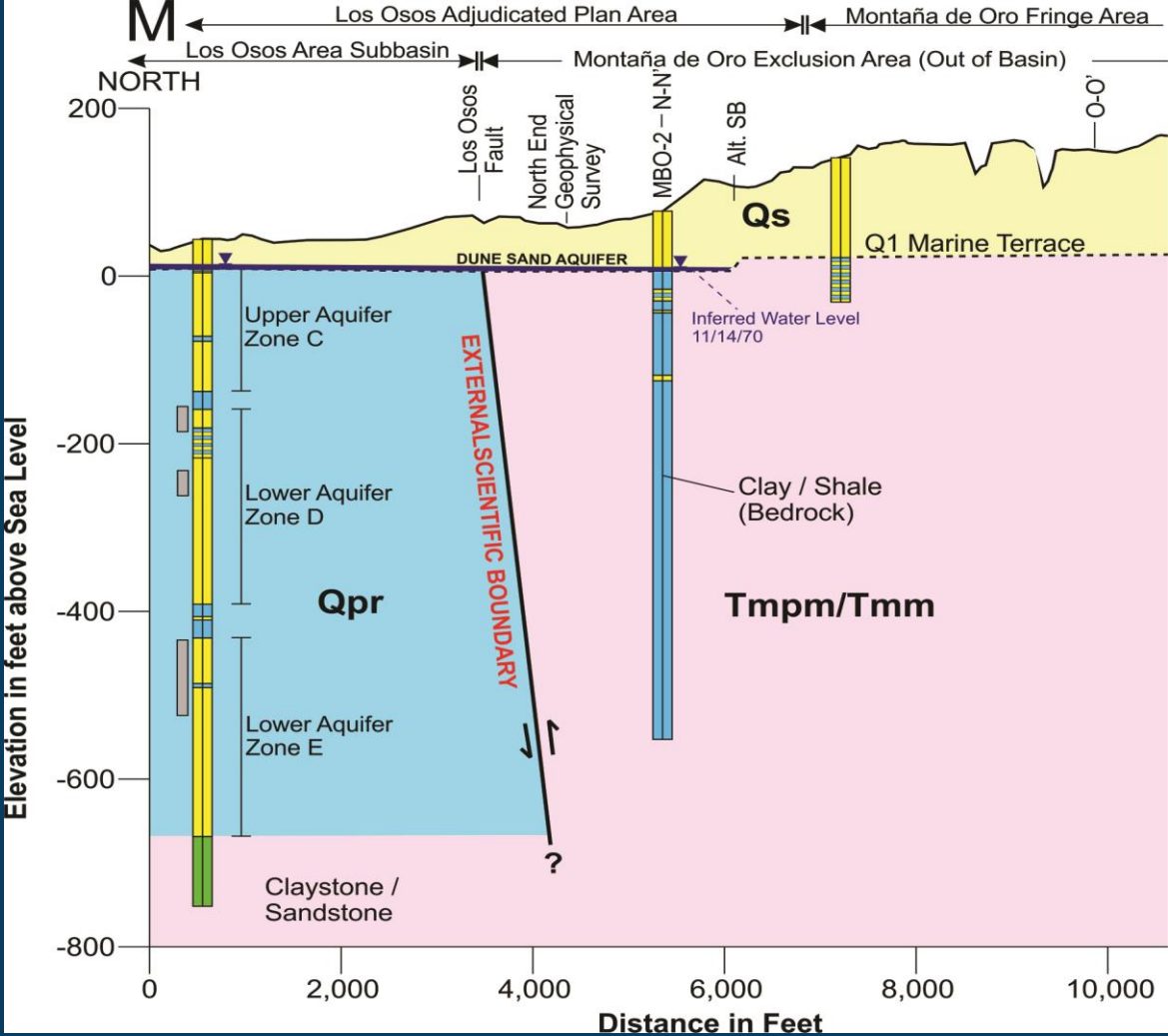
Montana de Oro Exclusion Area Scientific Support



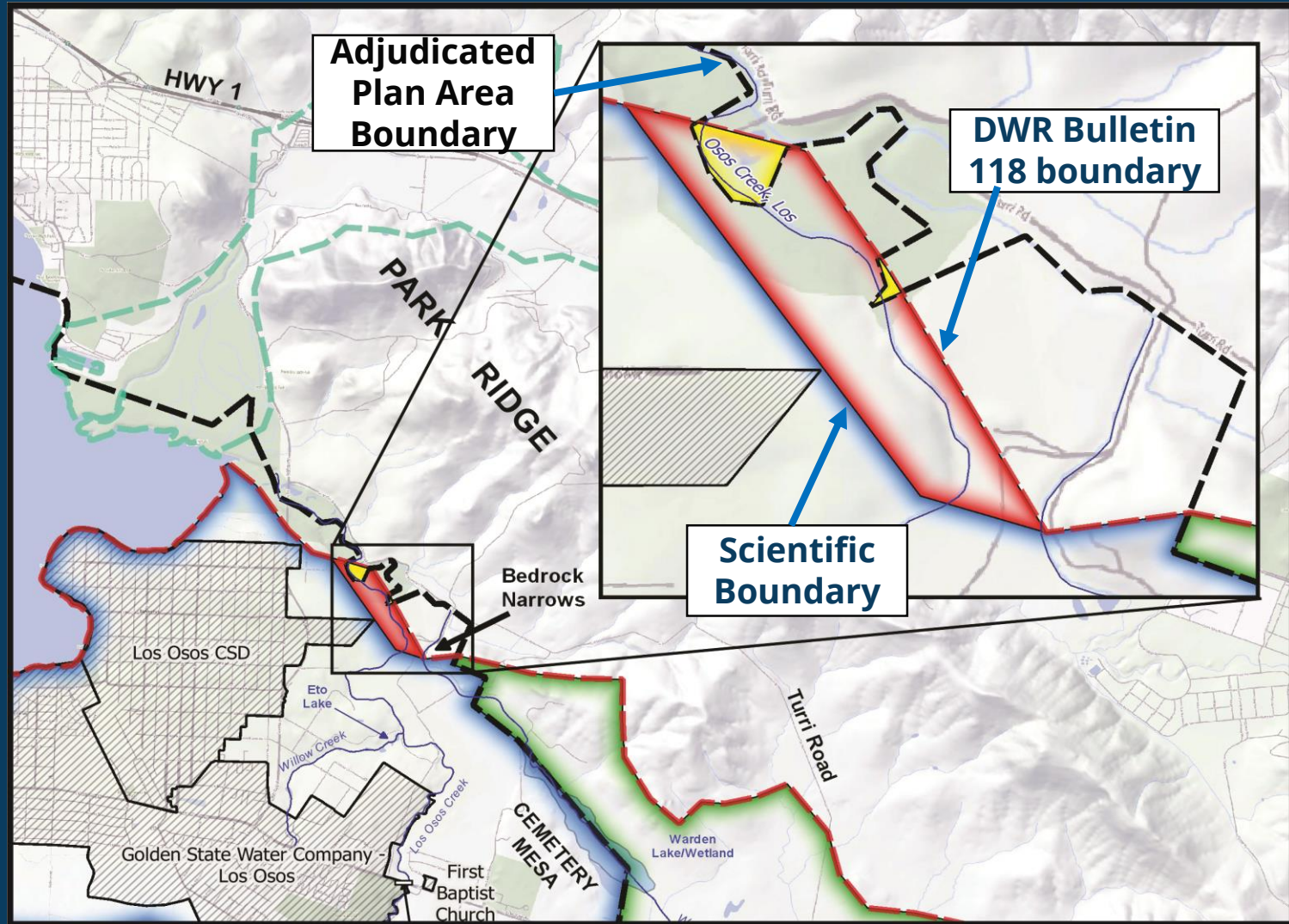
Montana de Oro Exclusion Area Scientific Support



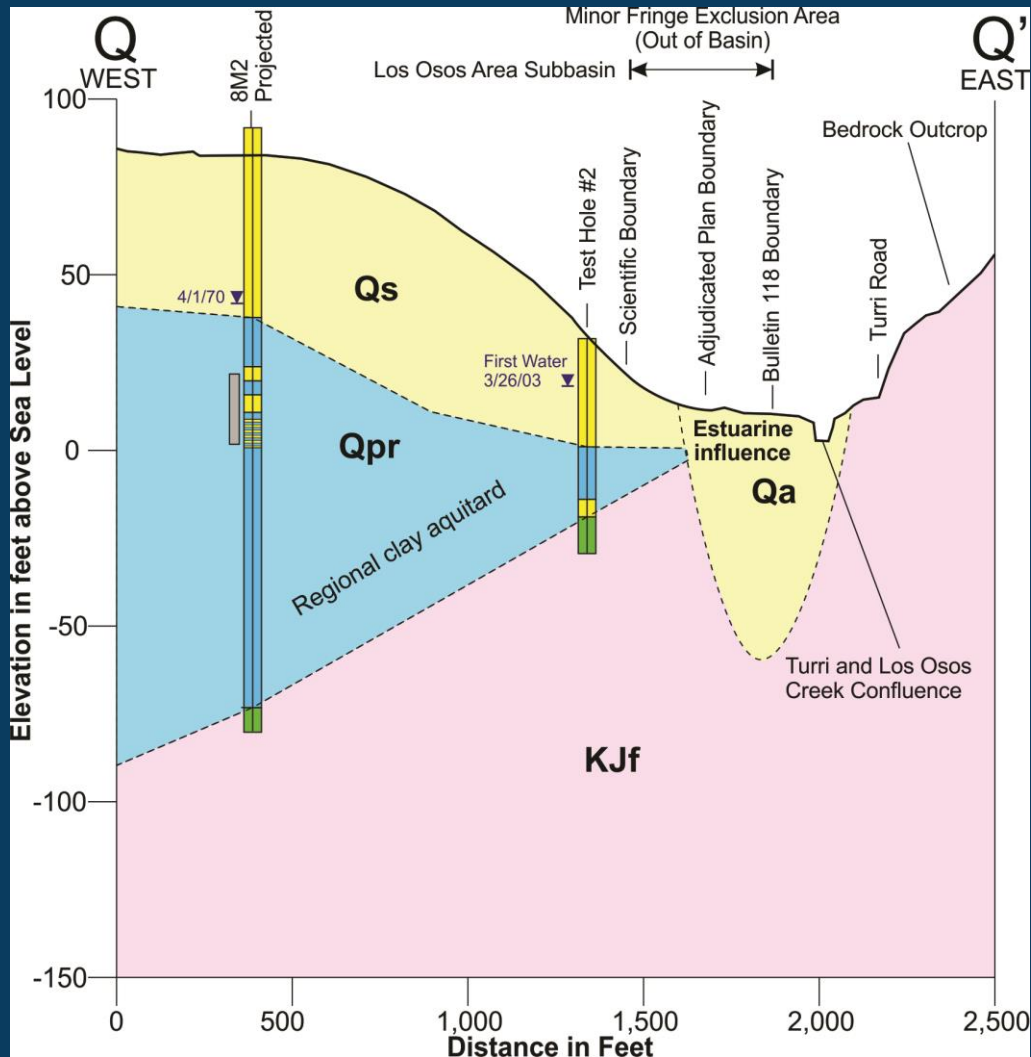
Montana de Oro Exclusion Area Scientific Support



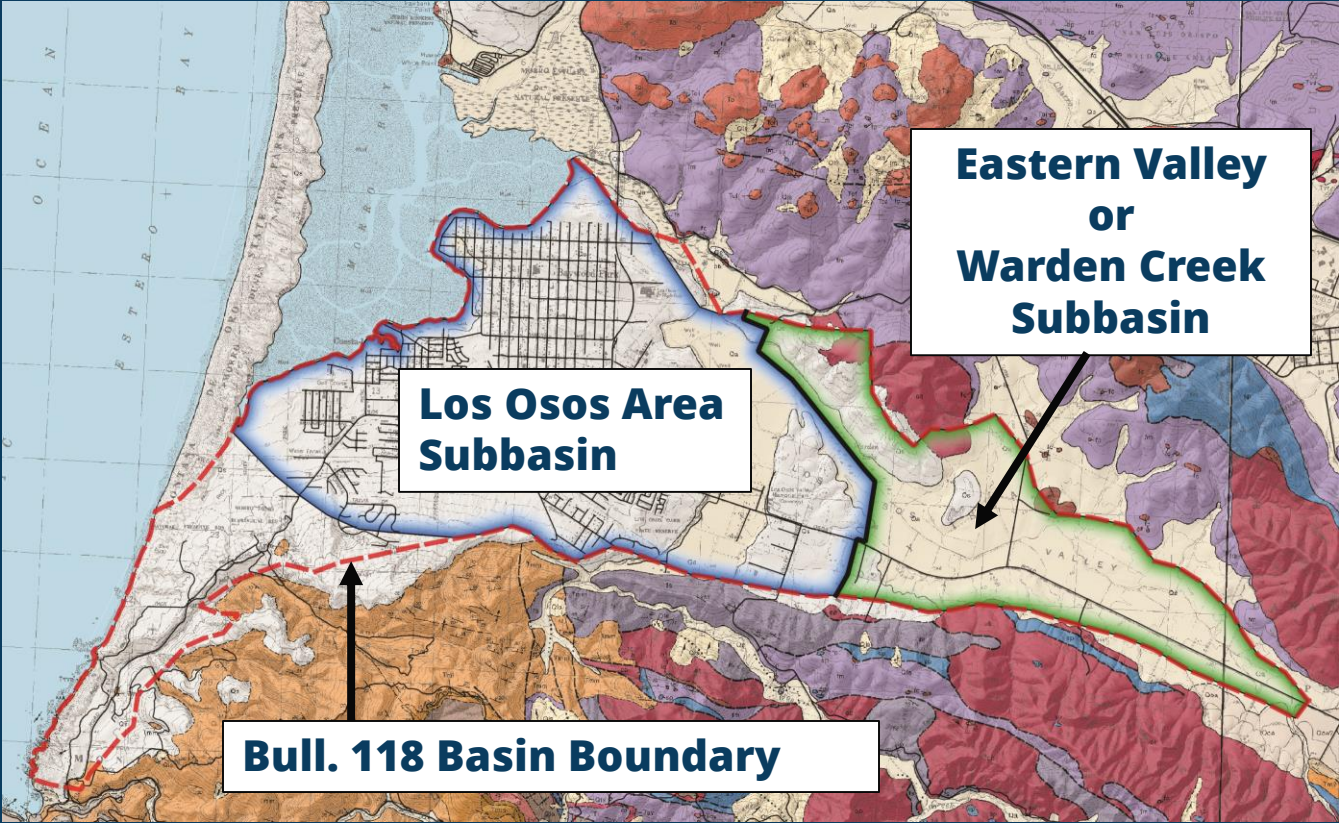
Minor Fringe Exclusion Area - Overview



Minor Fringe Exclusion Area Scientific Support



Potential Basin Boundary Modifications



Next Steps



Los Osos Basin: Next steps



Opportunities for Input & Information:

- ▶ Provide Letters of Support for the BBMR to the County Board
- ▶ Submit written comments on the study **by April 10th** via email/mail to Cathy Martin, County Public Works
- ▶ Join email lists – County, DWR

Questions



Thank you

Please contact for
Cathy Martin
cmmartin@co.slo.ca.us
(805) 781-5275

County's SGMA website

*<http://slocountywater.org/sgma> and sign up with our
emailing list for the Los Osos Valley Basin.*

