



Paso Basin Aerial Groundwater Mapping Pilot Study



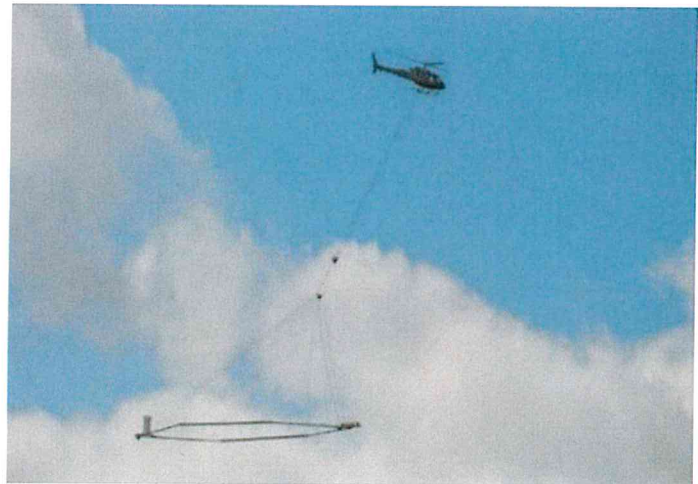
Paso Basin to Utilize Electromagnetic Measuring Technique to Map Local Aquifer System

The San Luis Obispo County Flood Control and Water Conservation District will conduct a survey of our local aquifer systems using the Aerial Electromagnetic (AEM) method starting mid-October 2019 in the Paso Robles Basin. This will provide a more complete picture of the groundwater basin for more informed decisions with our water in the future.

The surveying method uses instruments mounted on a helicopter, which will fly approximately 497 line-miles in a strategic pattern approximately 100 feet above the ground to collect measurements down to 1,000 feet below the land surface. The survey will send and receive signals that maps out the subsurface geology and groundwater locations in the Paso Robles Basin. The 3 to 5 day study will take place in two areas of the Paso Robles Basin, on the east side of the valley, and the area near Highway 46 and Highway 229 by Creston and Whitley Gardens.

Informational Presentations

- 8/13/2019, 9:00 AM:** Board of Supervisors Meeting
- 8/21/2019, 4:00 PM:** Paso Basin Cooperative Committee
- 8/21/2019, 7:00 PM:** Creston Advisory Body
- 8/28/2019, 7:00 PM:** San Miguel Advisory Council
- 9/4/2019, 7:00 PM:** Shandon Advisory Committee



Current Status and Next Steps

- In August and September 2019, the District is providing an informational overview on the Pilot Study, meeting dates and times are listed above.
- The flight path will avoid metallic structures (causes interference in the data set); hence the flight areas will avoid urban areas, vineyards, powerlines, etc.
- This project does not pose a risk to health or safety.
- The very low magnetic field is comparable to standing 1 foot away from your toaster for a few seconds, as the helicopter flies over.
- Survey results will be presented in 2020. Stay tuned!

To get involved please visit: SLOCounty.ca.gov/PW/PasoBasinPilotStudy