

**Groundwater Sustainability Commission**  
*for the San Luis Obispo Valley Groundwater Basin*

**NOTICE OF MEETING**

**NOTICE IS HEREBY GIVEN** that the Groundwater Sustainability Commission will hold a **Regular Meeting at 3:00 P.M. on Monday, March 1, 2021**. Based on the threat of COVID-19 as reflected in the Proclamations of Emergency issued by both the Governor of the State of California and the San Luis Obispo County Emergency Services Director, as well as the Governor's Executive Order N-29-20 issued on March 17, 2020 relating to the convening of public meetings in response to the COVID-19 pandemic, this meeting will be conducted as a phone-in/web-based meeting only. There will be no physical meeting location for this GSC Meeting. Members of the public can participate via phone or by logging into the web-based meeting.

**TO JOIN THE MEETING FROM YOUR COMPUTER, TABLET OR SMARTPHONE, GO TO:**

<https://zoom.us/j/93176281391?pwd=MkhPM09FdzVqRGxxckEvRVhUYVNTQT09>

Passcode: 075385

**YOU CAN ALSO DIAL IN USING YOUR PHONE:**

Dial: +1 669 900 6833

Meeting ID: 931 7628 1391

Passcode: 075385

**All persons desiring to speak during any Public Comment can submit a comment by:**

- Email at [jsteil@co.slo.ca.us](mailto:jsteil@co.slo.ca.us) by 5:00 PM on the day prior to the Commission meeting
- Teleconference meeting at link and/or by phone number above
- Mail by 5:00 PM on the day prior to the Commission meeting to:  
County of San Luis Obispo Department of Public Works  
Attn: Joey Steil  
County Government Center, Room 206  
San Luis Obispo, CA 93408
- Additional information on how to submit Public Comment is provided on page 3 of this Agenda

*NOTE: The Groundwater Sustainability Commission reserves the right to limit each speaker to three (3) minutes per subject or topic. In compliance with the Americans with Disabilities Act and Executive Order N-29-20, all possible accommodations will be made for individuals with disabilities, so they may participate in the meeting. Persons who require accommodation for any audio, visual or other disability in order to participate in the meeting of the GSC are encouraged to request such accommodation 48 hours in advance of the meeting from Joey Steil at (805) 781-5252.*

**GROUNDWATER SUSTAINABILITY COMMISSION AGENDA**

**Dawn Ortiz-Legg**, Member, County of San Luis Obispo  
**Bob Schiebelhut**, Chair, EVGMWC  
**Dennis Fernandez**, Member, ERMWC/VRMWC  
**Mark Zimmer**, Vice Chair, GSWC  
**Andy Pease**, Member, City of San Luis Obispo

**Bruce Gibson**, Alternate, County of San Luis Obispo  
**George Donati**, Alternate, EVGMWC  
**James Lokey**, Alternate, ERMWC/VRMWC  
**Toby Moore**, Alternate, GSWC  
**Aaron Floyd**, Alternate, City of San Luis Obispo

- 
1. **Call to Order** (Chair)
  2. **Roll Call** (City Staff: Mychal Boerman)
  3. **Pledge of Allegiance** (Chair)
  4. **Public Comment – Items not on Agenda** (Chair)

**5. Continued Item (from February 17, 2021) on Projects and Management Actions** (WSC Consultant

Team: Michael Cruikshank and Dan Heimel) – *Estimated Time: 90 Minutes*

Recommendation

- a) Receive a presentation on concept level projects and management actions and draft project evaluation criteria to achieve sustainability.

**6. Future Items** (Chair)

- a) GSC Meeting – March 31, 2021 at 3:00 p.m.
- b) Draft Chapter 8 – Sustainable Management Criteria
- c) Draft Chapter 9 – Projects and Management Actions
- d) Draft Surface Water/Groundwater Modeling Calibration Technical Memorandum

**7. Next Regular Meeting: March 31, 2021 at 3:00 p.m.**

**8. Adjourn** (Chair)

**Groundwater Sustainability Commission**  
*for the San Luis Obispo Valley Groundwater Basin*

**NOTICE OF MEETING**

**\*\*\*CONFERENCE CALL/WEBINAR ONLY\*\*\***

Monday, March 1, 2021 at 3:00 p.m.

**Important Notice Regarding COVID-19 Based on guidance from the California Department of Public Health and the California Governor's Officer, in order to minimize the spread of the COVID-19 virus, please note the following:**

1. The meeting will only be held telephonically and via internet via the number and website link information provided on the agenda. After each item is presented, Commission Members will have the opportunity to ask questions. Participants on the phone will then be provided an opportunity to speak for 3 minutes as public comment prior to Commission deliberations and/or actions or moving on to the next item. If a participant wants to provide public comment on an item, they should select the "Raise Hand" icon on the Zoom Online Meeting platform or press \*9 if on the phone. The meeting host will then unmute the participant when it is their turn to speak and allow them to provide public comment.
2. The Commission's agenda and staff reports are available at the following website:  
<https://www.slowaterbasin.com>
3. If you choose not to participate in the meeting and wish to make a written comment on any matter within the Commission's subject matter jurisdiction, regardless of whether it is on the agenda for the Commission's consideration or action, please submit your comment via email or U.S. Mail by 5:00 p.m. on the Friday prior to the Committee meeting. Please submit your comment to Joey Steil at [jsteil@co.slo.ca.us](mailto:jsteil@co.slo.ca.us). Your comment will be placed into the administrative record of the meeting.

Mailing Address:

County of San Luis Obispo Department of Public Works

Attn: Joey Steil

County Government Center, Room 206

San Luis Obispo, CA 93408

4. If you choose not to participate in the meeting and wish to submit verbal comment, please call (805) 781-5252 and ask for Joey Steil. If leaving a message, state and spell your name, mention the agenda item number you are calling about and leave your comment. The verbal comments must be received by no later than 9:00 a.m. on the morning of the noticed meeting and will be limited to 3 minutes. Every effort will be made to include your comment into the record, but some comments may not be included due to time limitations.

*NOTE: The Groundwater Sustainability Commission reserves the right to limit each speaker to three (3) minutes per subject or topic. In compliance with the Americans with Disabilities Act and Executive Order N-29-20, all possible accommodations will be made for individuals with disabilities, so they may participate in the meeting. Persons who require accommodation for any audio, visual or other disability in order to participate in the meeting of the GSC are encouraged to request such accommodation 48 hours in advance of the meeting from Joey Steil at (805) 781-5252.*

**GROUNDWATER SUSTAINABILITY COMMISSION**  
***for the San Luis Obispo Valley Groundwater Basin***

**March 1, 2021**

**Agenda Item 5 – Continued Item (from February 17, 2021) on Projects and Management Actions**  
**(Presentation Item) – *Estimated Time: 90 Minutes***

**Recommendation**

- a) Receive a presentation on conceptual level projects and management actions and draft project evaluation criteria to achieve sustainability.

**Prepared by**

Michael Cruikshank, WSC

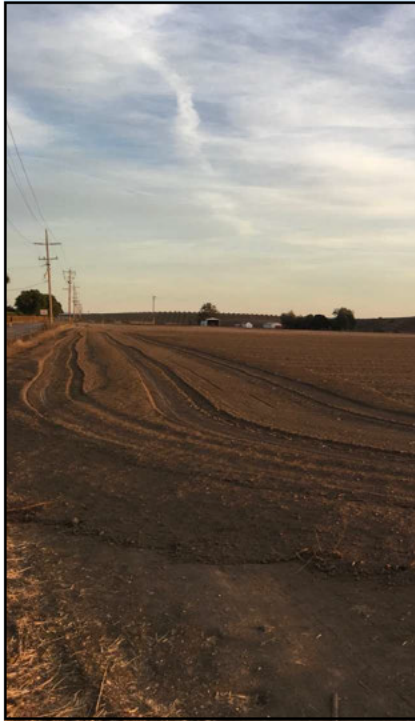
Dan Heimel, WSC

**Discussion**

The WSC Team, has been tasked with the preparation of the Groundwater Sustainability Plan (GSP) for the SLO Basin to meet the requirements of SGMA. SGMA requires the GSP to demonstrate how proposed projects and management actions will lead to sustainability. The WSC Team and GSA Staff utilized the scoring criteria and ranked the conceptual projects discussed at the December GSC meeting. The top projects will be considered for further evaluation including the development of cost estimates and incorporated into future model runs to evaluate the associated groundwater level responses. The presentation will include a discussion of the projects and management actions that will be included in the GSP.

**Attachments:**

1. Presentation
2. Preliminary Projects Evaluation Criteria and Ranking Tables

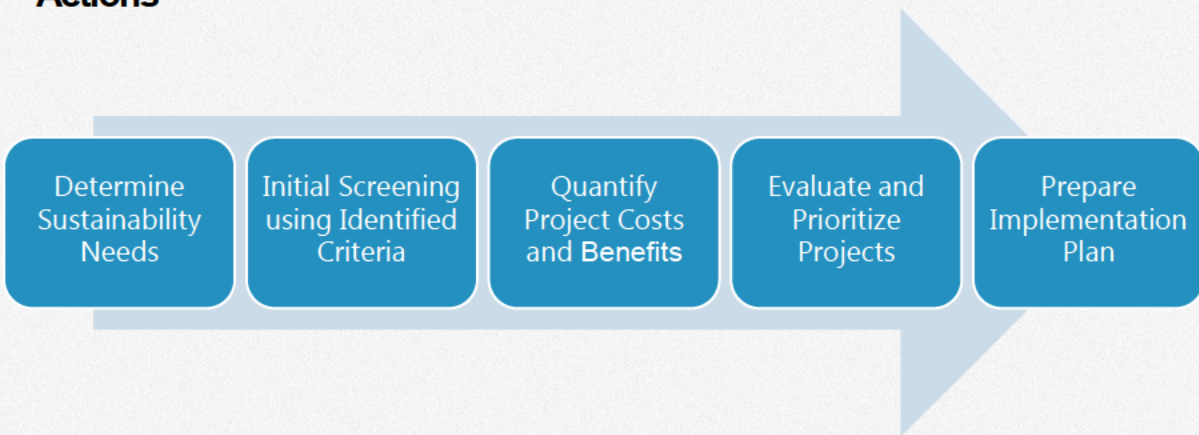


# Projects and Management Actions

Dan Heimel and Michael Cruikshank

35 | SLO GSC MEETING • FEBRUARY 17, 2021

## Process for Evaluation of Projects and Management Actions



36 | SLO GSC MEETING • FEBRUARY 17, 2021

# Project Evaluation Criteria

- Quantity of Water
- Capital Cost
- Water Cost
- O&M Cost
- GW Quality Impact
- Reliability/Resiliency
- Timeline to Implement
- Feasibility/Complexity
- Environmental Impacts
- Socioeconomic Impacts
- Eligible for Grant Funding
- Groundwater Level Benefit

# Project Evaluation Criteria

Criteria	Scoring
Quantity of Water	1- <250 AFY 2- 250-500 AFY 3- 500-750 AFY 4- 750-1000 AFY 5- > 1,000 AFY
Capital Cost	1->\$5M 2- 3- \$2,500,000 4- 5- \$0
Water Cost	1->\$4,000/AFY 2- \$3,000 - \$4,000/AFY 3- \$2,000 - \$3,000/AFY 4- \$1,000 - \$2,000/AFY 5- < \$1,000/AFY
O&M Cost	1->\$2,000/AFY 2- \$1,000 - \$2,000/AFY 3- \$500 - \$1,000/AFY 4- \$100 - \$500/AFY 5- < \$100/AFY
GW Water Quality Impact	1- Higher TDS than ambient groundwater 2- 3- Equivalent TDS than ambient groundwater 4- 5- Lower TDS than ambient groundwater
Reliability/Resiliency	1- Highly variable 2- 3- Moderately reliable 4- 5- Highly reliable

Criteria	Scoring
Timeline to Implement	1- > 10 years 2- 7 years 3- 5 years 4- 3 years 5- < 1 year
Feasibility/Complexity	1- Significant regulatory, environmental, political, or social challenges 2- 3- Potential significant regulatory, environmental, political, or social challenges 4- 5- Limited regulatory, environmental, political, or social challenges
Environmental Impacts	1- Detrimental Environmental impacts 2- 3- Neutral Environmental impacts 4- 5- Beneficial Environmental impacts
Socioeconomic Impacts	1- Detrimental Socioeconomic impacts 2- 3- Neutral Socioeconomic impacts 4- 5- Beneficial Socioeconomic impacts
Eligible for Grant Funding	1- Limited grant funding opportunities 2- 3- Moderate grant funding opportunities 4- 5- Significant grant funding opportunities
Groundwater Level Benefit	1- Minimal Effect on Groundwater Levels 2- 3- Average Effect on Groundwater Levels 4- 5- Highest Effect Groundwater Levels

# Project Evaluation Scoring

Projects and Management Actions	Description	Quantity of Water (AFY)	Weighting Factor													Total
			Quantity of Water	Capital Cost	Water Cost	O&M Cost	GW Water Quality Benefits	Reliability/Resiliency	Timeline to Implement	Feasibility/Complexity	Environmental Impacts	Socioeconomic Impacts	Eligibility for Grant Funds	Groundwater Level Benefit		
SWP to Ag Irrigation	Connection to SWP to offset Ag groundwater pumping through direct delivery of SWP Water	1000	3	2	3	4	5	3	3	3	3	4	4	3	73	
SWP Recharge	Connection to SWP to provide water for groundwater recharge	500	3	2	3	4	5	3	3	3	3	4	4	4	71	
City of SLO Recycled Water to Ag Irrigation	Connection to City of SLO Recycled Water System to offset Ag groundwater pumping through direct delivery	500-800	3	3	1	4	4	5	4	4	3	4	4	3	69	
SWP to GSWC	Connection to SWP project to offset GSWC groundwater pumping through direct delivery of SWP Water	400	2	2	3	4	5	3	4	3	3	4	4	4	69	
Price Canyon Discharge Relocation	Relocation of Sentinel Peak Produced Water Discharge location to upper West Corral de Piedra Creek	500	2	2	3	4	5	5	4	2	4	3	4	3	69	
Varian Ranch MWC AG Subbasin Wells	Connection to Varian Ranch MWC wells in Arroyo Grande Subbasin to offset Varian Ranch groundwater pumping through direct delivery of imported groundwater	35	1	3	3	4	3	4	4	3	3	4	4	3	67	
SWP to Mutual Water Companies	Connection to SWP to offset Edna and Varian Ranch MWC groundwater pumping through direct delivery of SWP Water	200	1	4	3	4	5	3	3	3	3	4	4	3	65	
East Corral de Piedra Stormwater Capture and Recharge	Capture of high flow stormwater in East Corral de Piedra Creek and percolation in a recharge basin	30??	1	3	3	4	5	1	4	3	5	3	5	2	64	
City of SLO Potable Water to GSWC	Connection to City of SLO potable water system to offset Golden State Water Company groundwater pumping through direct delivery	400	2	4	1	4	5	5	1	1	4	3	3	4	63	
Managed Discharge from Rightetti Reservoir	Enhanced management of releases to increase recharge in West Corral de Piedra Creek	30??	1	4	3	3	3	2	3	1	5	3	3	2	60	

39 | SLO GSC MEETING -FEBRUARY 17, 2021

## Screened Projects for Further Evaluation

Projects and Management Actions	Description	Quantity of Water (AFY)
SWP to Ag Irrigation	Connection to SWP to offset Ag groundwater pumping through direct delivery of SWP Water	>1000
SWP Recharge	Connection to SWP to provide water for groundwater recharge	500
City of SLO Recycled Water to Ag Irrigation	Connection to City of SLO Recycled Water System to offset Ag groundwater pumping through direct delivery	500-800
SWP to GSWC	Connection to SWP project to offset GSWC groundwater pumping through direct delivery of SWP Water	400
Price Canyon Discharge Relocation	Relocation of Sentinel Peak Produced Water Discharge location to upper West Corral de Piedra Creek	500



Discussion Item:

Are these the right projects for further evaluation?

40 | SLO GSC MEETING - FEBRUARY 17, 2021

## Information Needed to Develop Cost Estimates and Model Scenarios

**How will the water be used?:** Direct delivery or managed aquifer recharge

**Quantity:** Defined by the source of water and demand

**Timing:** Seasonal, time of day, etc...

**Infrastructure Needs:** Storage facilities, distribution infrastructure, pressure requirements, water quality considerations, etc...



Discussion Item

## State Project Water – Ag Irrigation

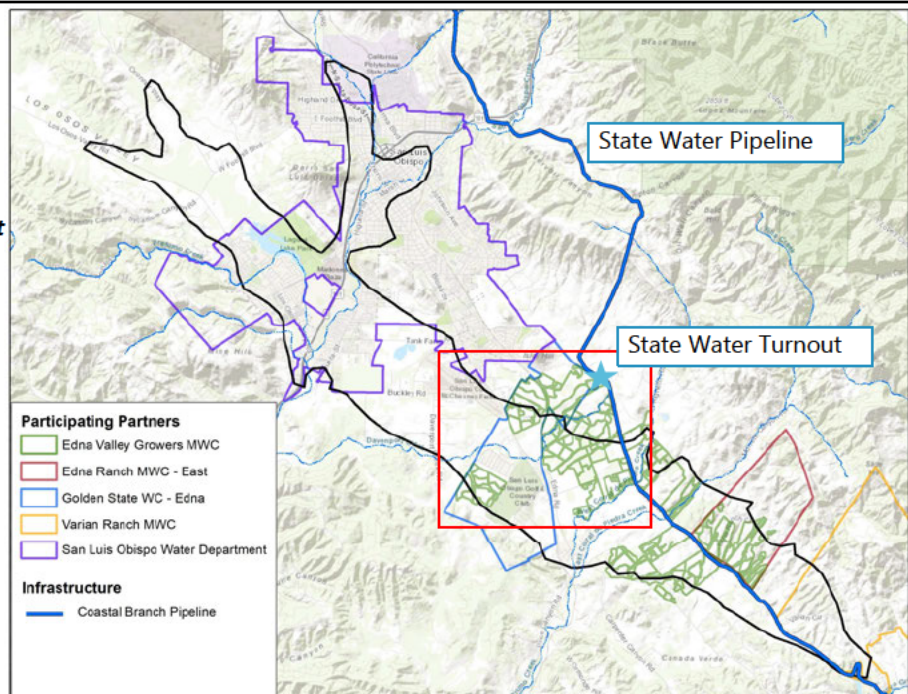
**Quantity:** 1,000 AFY Direct delivery to agricultural users

**Location of Delivery:** Area of declining groundwater in Edna Valley

**Timing:** Seasonal delivery based on demand



Discussion Item:  
Additional Input





## State Project Water –Recharge Basin

Quantity: 500 AFY Recharge

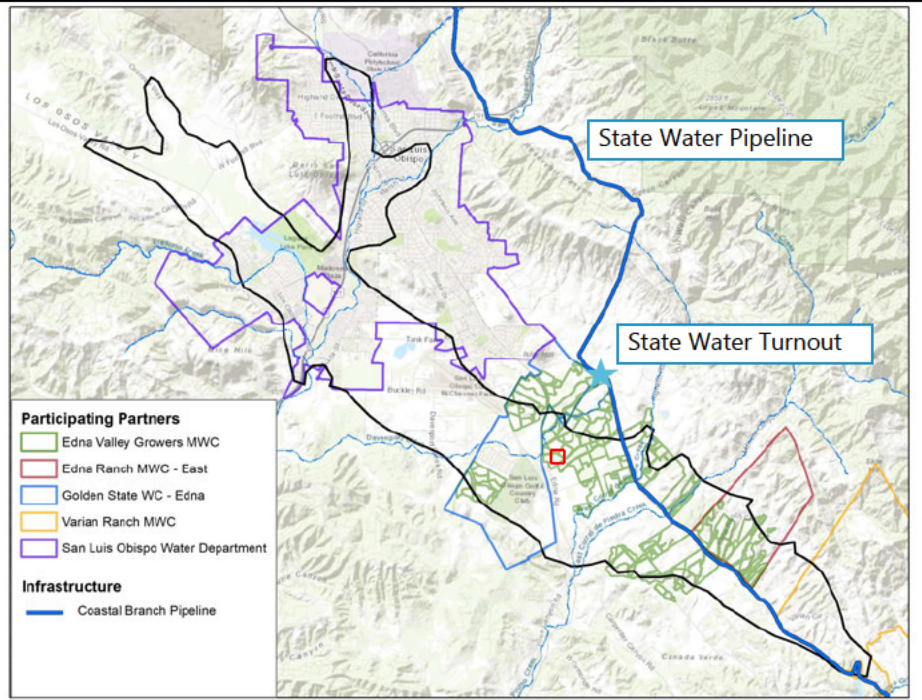
Location of Delivery: Area of declining groundwater in Edna Valley

Timing: Year-round deliveries



Discussion Item:  
Additional Input

43 | SLO GSC MEETING • FEBRUARY 17, 2021



## City of SLO Recycled Water

Quantity: 500 – 700 acre-ft/yr

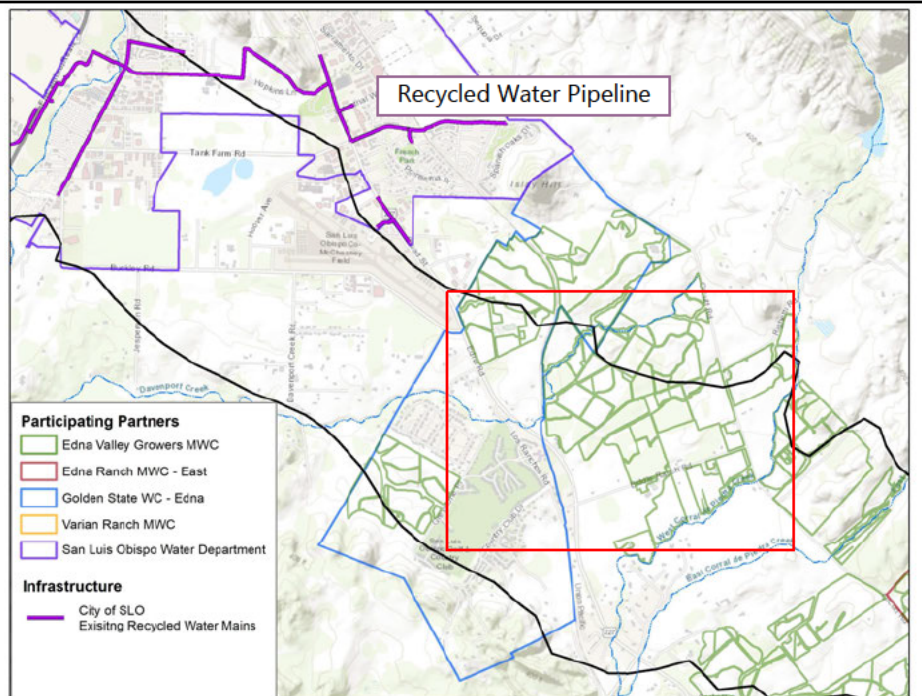
Location of Delivery: Area of declining groundwater in Edna Valley

Timing: Seasonal delivery based on demand



Discussion Item:  
Additional Input

44 | SLO GSC MEETING • FEBRUARY 17, 2021



## Price Canyon Water Pipeline Project

**Quantity:** 500 –acre-ft/yr

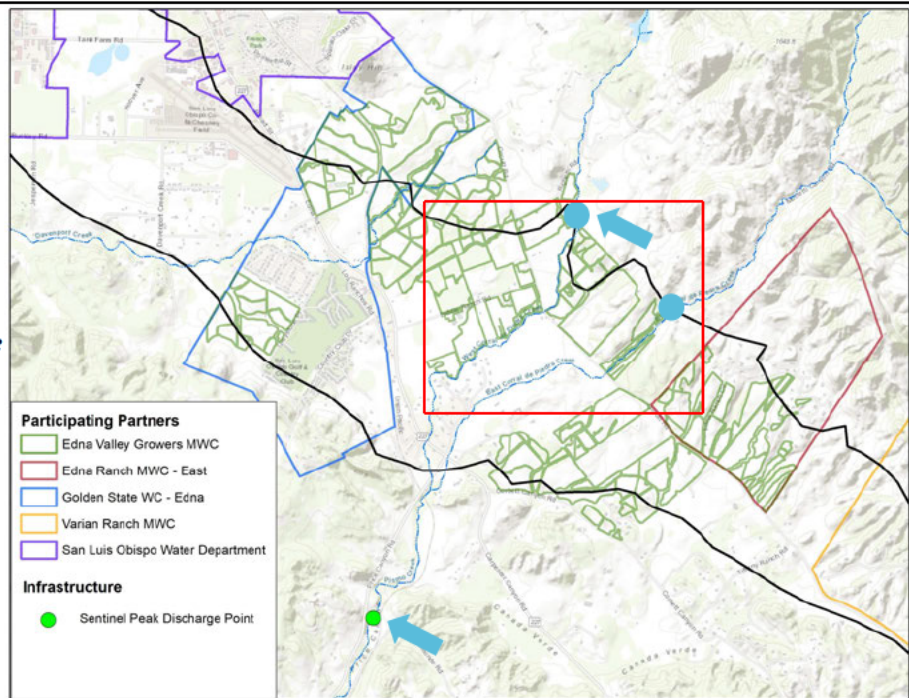
**Location of Delivery:**  
Direct delivery Agriculture  
or discharge to Corral De Piedras

**Timing:** Seasonal delivery  
based on demand



Discussion Item:  
Additional Input

45 | SLO GSC MEETING • FEBRUARY 17, 2021



## Potential Management Actions (Edna Valley)

- Non-Agricultural Indoor Conservation
  - Indoor Water Use in Edna Valley is low (~150 AFY)
  - Returns to the aquifer via septic systems
- Non-Agricultural (Rural Domestic and MWC) Outdoor Conservation
  - ~850 AFY of Total Non-Ag production
    - ~570 AFY Non water purveyor production (estimated)
- Pumping Reductions (Total 3,500 AFY – Ag Pumping, 850 AFY – Non-Ag )
  - Improved irrigation efficiency
  - Water efficient crop conversion
  - Fallowing crops
- Metering production wells



Discussion Item

46 | SLO GSC MEETING • FEBRUARY 17, 2021

## PROJECTS AND MANAGEMENT ACTIONS NEXT STEPS

### Feb 17 GSC Meeting

- Present Preliminary Results of Project Evaluation and Ranking
- Goal is to receive input on the recommended projects to be included in Draft Chapter 9 – Projects and Management Actions

### March 1<sup>st</sup> GSC Meeting

- Placeholder for further discussion of Projects and Management Actions (if needed)

### March 31<sup>st</sup> GSC Meeting

- Present Preliminary Results of Project and Management Actions Costs and Benefit Analysis
- Including Model Results from highly ranked projects and management actions
- Goal is to receive input on the recommended projects to be included in Draft Chapter 9 – Projects and Management Actions

## DRAFT SLO GSP Projects Scoring Matrix

Criteria	Scoring
Quantity of Water	1- <250 AFY 2- 250-500 AFY 3- 500-750 AFY 4- 750-1000 AFY 5- > 1,000 AFY
Capital Cost	1->\$5M 2- 3- \$2,500,000 4- 5- \$0
Water Cost	1- >\$4,000/AFY 2- \$3,000 - \$4,000/AFY 3- \$2,000 - \$3,000/AFY 4- \$1,000 - \$2,000/AFY 5- < \$1,000/AFY
O&M Cost	1- >\$2,000/AFY 2- \$1,000 - \$2,000/AFY 3- \$500 - \$1,000/AFY 4- \$100 - \$500/AFY 5- < \$100/AFY
GW Water Quality Impact	1- Higher TDS to ambient groundwater 2- 3- Equivalent TDS than ambient groundwater 4- 5- Lower TDS than ambient groundwater
Reliability/Resiliency	1- Highly variable 2- 3- Moderately reliable 4- 5- Highly reliable
Timeline to Implement	1- > 10 years 2- 7 years 3- 5 years 4- 3 years 5- < 1 year
Feasibility/Complexity	1- Significant regulatory, environmental, political, or social challenges 2- 3- Potential significant regulatory, environmental, political, or social challenges 4- 5- Limited regulatory, environmental, political, or social challenges
Environmental Impacts	1- Detrimental Environmental impacts 2- 3- Neutral Environmental impacts 4- 5- Beneficial Environmental impacts
Socioeconomic Impacts	1- Detrimental Socioeconomic impacts 2- 3- Neutral Socioeconomic impacts 4- 5- Beneficial Socioeconomic impacts
Eligible for Grant Funding	1- Limited grant funding opportunities 2- 3- Moderate grant funding opportunities 4- 5- Significant grant funding opportunities
Groundwater Level Benefit	1- Minimal Effect on Groundwater Levels 2- 3- Average Effect on Groundwater Levels 4- 5- Highest Effect Groundwater Levels

Preliminary SLO BASIN GSP Projects Scoring Results

		Weighting Factor	3	2	2	2	1	1	1	2	1	1	1	4	
Projects and Management Actions	Description	Quantity of Water (AFY)	Quantity of Water	Capital Cost	Water Cost	O&M Cost	GW Water Quality Benefits	Reliability/Resiliency	Timeline to Implement	Feasibility/Completeness	Environmental Impacts	Socioeconomic Impacts	Eligibility for Grant Funds	Groundwater Level Benefit	Total
SWP to Ag Irrigation	Connection to SWP to offset Ag groundwater pumping through direct delivery of SWP Water	1000	5	2	3	4	5	3	3	3	3	4	4	3	73
SWP Recharge	Connection to SWP to provide water for groundwater recharge	500	3	2	3	4	5	3	3	3	3	4	4	4	71
City of SLO Recycled Water to Ag Irrigation	Connection to City of SLO Recycled Water System to offset Ag groundwater pumping through direct delivery	500-700	3	3	1	4	4	5	4	4	3	4	4	3	69
SWP to GSWC	Connection to SWP project to offset GSWC groundwater pumping through direct delivery of SWP Water	400	2	2	3	4	5	3	4	3	3	4	4	4	69
Price Canyon Discharge Relocation	Relocation of Sentinel Peak Produced Water Discharge location to upper Corral de Piedra Creek or direct delivery to agriculture	500	2	2	5	4	5	5	4	2	4	3	4	3	69
Varian Ranch MWC AG Subbasin Wells	Connection to Varian Ranch MWC wells in Arroyo Grande Subbasin to offset Varian Ranch groundwater pumping through direct delivery of imported groundwater	35	1	3	5	4	3	4	4	3	3	4	4	3	67
SWP to Mutual Water Companies	Connection to SWP to offset Edna and Varian Ranch MWC groundwater pumping through direct delivery of SWP Water	200	1	4	3	4	5	3	3	3	3	4	4	3	65
East Corral de Piedra Stormwater Capture and Recharge	Capture of high flow stormwater in East Corral de Piedra Creek and percolation in a recharge basin	50??	1	3	5	4	5	1	4	3	5	3	5	2	64
City of SLO Potable Water to GSWC	Connection to City of SLO potable water system to offset Golden State Water Company groundwater pumping through direct delivery	400	2	4	1	4	5	5	1	1	4	3	3	4	63
Managed Discharge from Righetti Reservoir	Enhanced management of releases to increase recharge in West Corral de Piedra Creek	50??	1	4	5	5	3	2	3	1	5	3	3	2	60