

SGMA: Santa Maria Basin Boundary Modification Request --- Notice to Interested Stakeholders for Comments ---

The Santa Maria Basin Fringe Areas – County of San Luis Obispo Groundwater Sustainability Agency (County) submitted a basin boundary modification request (BBMR) for the Santa Maria Basin to the California Department of Water Resources (DWR). The BBMR application is now considered complete by DWR and was posted to DWR’s BBMR on-line portal on September 7, 2018. It may be found at <https://sgma.water.ca.gov/basinmod/modrequest/submitted>. This notice is to inform you how you can provide written comments and input to DWR and/or the County regarding the submitted basin boundary modifications discussed here.

Local Agency/ Water System/Public Support or Opposition to Boundary Modification:

Per DWR’s Basin Boundary Emergency Regulations (Regulations), DWR requires outreach and solicitation of comments from local agencies, public water systems, and the public. Any person may provide information to support, oppose, or comment on a proposed boundary modification request as follows:

- Public input must be submitted by written notice to DWR before the comment period closes on **October 7, 2018**, which is **30 days** after DWR posts a notice that the request is complete and provide the requesting agency (i.e. the County) with a duplicate copy of that information the same day.
- Public input must include the name, address, and electronic mail address of the person or entity providing that input.
- Public input must include a clear statement of the basis for the support of or opposition to the proposed boundary modification.
- The level of detail provided by public input need not be as comprehensive as that contained in the request but must rely on similar scientific and technical information as the particular boundary modification request to which it is addressed.

The public can access the submitted BBMR information and provide written comments to the Santa Maria Basin boundary modification request by visiting <http://sgma.water.ca.gov/basinmod/modrequest/submitted> to upload the comments electronically or by mail with a hard copy letter to both:

STATE DWR

Dane Mathis
Supervising Engineering Geologist
California Department of Water Resources
3374 East Shields Avenue
Fresno, CA 93726

COUNTY

County of San Luis Obispo
Department of Public Works
Attn: Dick Tzou, P.E.
County Government Center, Room 206
San Luis Obispo, CA 93408
Or Email: dtzou@co.slo.ca.us

All public comments will be posted to DWR's website and will be considered during DWR's evaluation of a boundary modification request. To support or oppose the proposed modification, the Regulations require that the affected local agencies and/or affected public water systems provide one of the following:

- A copy of a resolution formally adopted by the decision-making body of the affected agency or affected system; or
- A letter signed by an executive officer or other official with appropriate delegated authority who represents the affected agency or affected system.

Sustainable Groundwater Management Act and State's Regulations on Basin Boundary Modifications:

The Sustainable Groundwater Management Act (SGMA) took effect on January 1, 2015 and requires that certain actions be taken in groundwater basins (as delineated in the State's Bulletin 118 report) that DWR designates as either high or medium priority. DWR designated Santa Maria Basin as a high priority basin. Although SGMA does not apply to the portions of the Santa Maria Basin that are at issue in the litigation (adjudicated area) provided that certain requirements are met¹, there are multiple "fringe areas" located outside of the basin's adjudicated area boundary but within the State's Bulletin 118 basin boundary. In order to comply with SGMA, the County formed a Groundwater Sustainability Agency (GSA) over the Santa Maria Basin Fringe Areas (Fringe Areas) in 2017.

In October 2015, DWR adopted the Regulations that define a process for GSAs or local agencies to request modifications to existing groundwater basin boundaries, as defined in the State's Bulletin 118. The Regulations detail the required processes that a local agency must follow prior to requesting that DWR make modifications to a basin boundary. Such requests must be based on scientific and/or jurisdictional information, such as a hydrogeologic conceptual model demonstrating impediment to flow or other conditions warranting basin boundary adjustments. The Regulations also define how affected agencies, systems, and the public may provide input on the basin boundary modification requests. DWR opened a modification request period and requires GSAs or local agencies to submit requests by September 28, 2018 for DWR's review and ultimate approval or denial. Access the Regulations and related information at DWR's website:

https://water.ca.gov/LegacyFiles/groundwater/sgm/pdfs/SGMA_Basin_Boundary_Regulations.pdf

Overview of Proposed Basin Boundary Modification and Public Outreach:

The submitted boundary modification request for the Santa Maria Basin includes exclusion of the four Fringe Areas (i.e., Pismo Creek Valley, Nipomo Valley, Southern Bluffs, and Ziegler Canyon) and establishment of a separate Arroyo Grande Creek Valley subbasin (see attached

¹ Pursuant to Water Code 10720.8(a)(18), SGMA does not apply to the adjudicated areas of the Santa Maria Basin (that portion of the Santa Maria Basin at issue in Santa Maria Valley Water Conservation District v. City of Santa Maria, et al.), provided that certain requirements are met. The adjudicated area covers a majority of the Santa Maria Basin, and is managed by three management areas (i.e., Northern Cities Management Area, Nipomo Mesa Management Area, Santa Maria Valley Management Area).

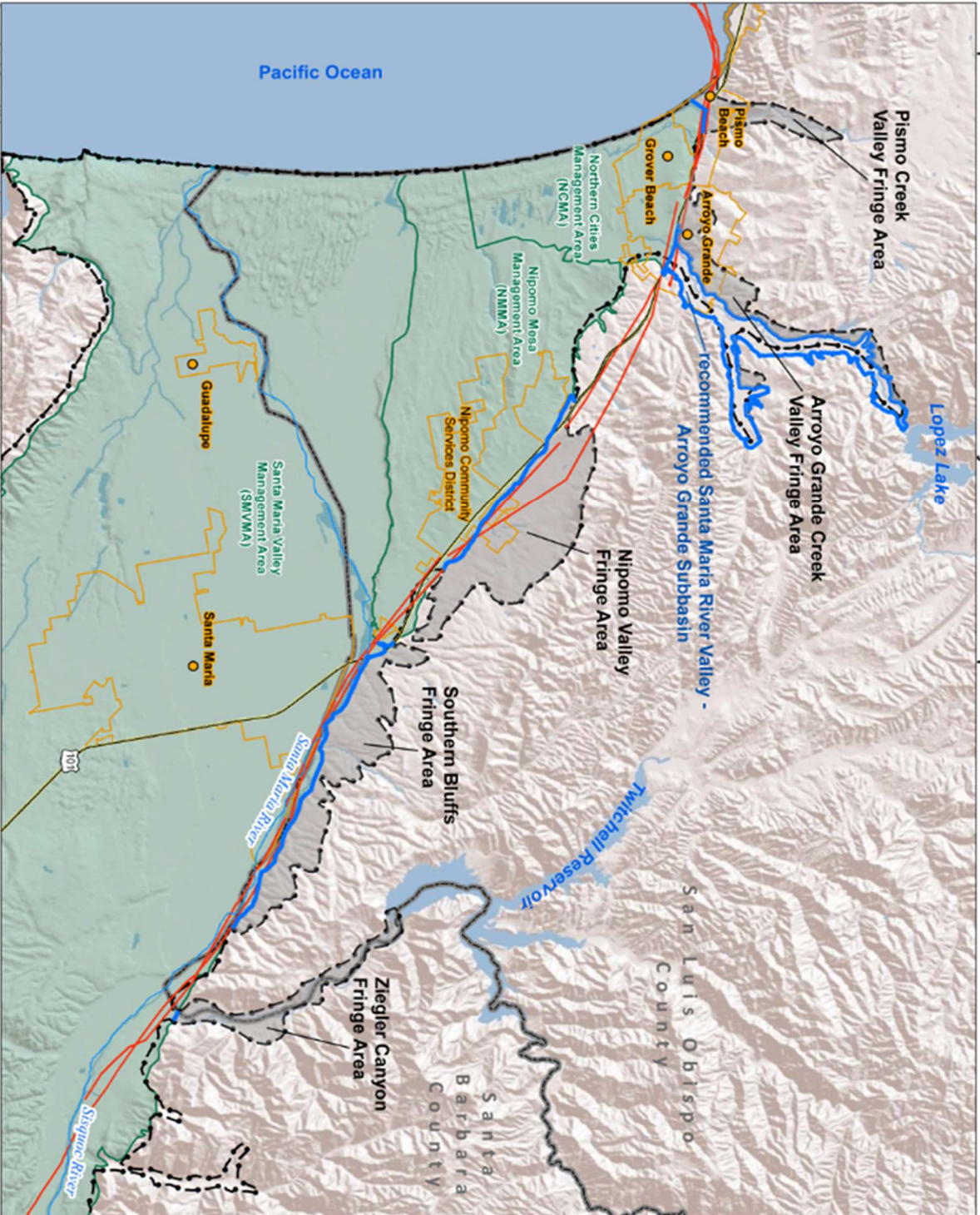
map below). Technical studies provided the basis for the basin's request and are included as attachments to the BBMR posted on DWR's website. The studies found that some Fringe Areas' alluvial valleys yield insignificant quantities of groundwater and/or have differing hydrogeologic characteristics and geologic offsets across fault zones that support the requested boundary modifications. The proposed modifications will not affect the court-approved requirements and will help align the adjudicated area boundary with the State's Bulletin 118 boundary, founded on the best available scientific information.

In order to ensure that the affected local agencies, affected public water systems, and the public were informed about the proposed basin boundary modifications, the County conducted a variety of public outreach efforts. The following briefly describes some key milestones in this outreach process:

- **March 6, 2018:** The County Board of Supervisors, acting as the GSA over the Fringe Areas, directed staff to submit an initial notification of intent to explore a boundary modification for the Santa Maria Basin to DWR, and to coordinate with basin users to develop a BBMR in accordance with the Regulations.
- **February - May 2018:** County staff and the technical consultant presented the proposed basin boundary modifications and supporting scientific information at several public meetings. County staff also published two technical reports related to the BBMR. One technical report presented a characterization of the Fringe Areas' geology, hydrology, connectivity with the adjudicated area, and other information concerning basin conditions. The other technical report presented the data and information justifying the proposed boundary modification request. The technical reports and meeting material can be accessed at:
Click on the Santa Maria Basin link: <https://www.slocountywater.org/sgma>.
- **June 5, 2018:** The County Board of Supervisors, acting as the GSA over the Fringe Areas, adopted a resolution to formally initiate the proposed Santa Maria Basin BBMR and submit the BBMR to DWR.
- **September 7, 2018:** DWR considered the County GSA's Santa Maria Basin BBMR application complete and posted it to DWR's BBMR on-line portal.

For more information, please feel free to contact Dick Tzou, Water Resources Engineer, at (805) 781-4473.

Proposed Santa Maria River Basin Boundary Modification Map

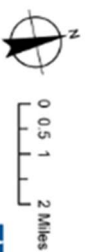


**Santa Maria River Valley
Groundwater Basin
Boundary Modification Requests
Overview Map**

Santa Maria River Valley
Groundwater Basin Fringe Areas

LEGEND

- Proposed Boundary Modification
- Santa Maria River Valley Groundwater Basin (DWR Bulletin 118, 2016)
- Fringe Areas to be Removed
- Management Agencies Adjudicated Boundary
- Santa Maria River Valley Adjudicated Area
- County Line
- Local Agency Boundaries
- Cities
- Faults
- Rivers



Date: May 2, 2016



Document Title: "Proposed Santa Maria River Valley Groundwater Basin Boundary Modification Requests Overview Map" Date: May 2, 2016