

NOVEMBER - DECEMBER 2022

Diversity, Equity, & Inclusion

Cultural Competence Newsletter

County of San Luis Obispo - Health Agency



Diversity, Equity, & Inclusion Committee



Members:

Kimberli Andridge, Psy.D., Associate Director of Operations & Quality, Coor. of Gender & Sexual Inclusivity

Jay Bettergarcia, Ph.D., Professor & Director of QCARES

Ana Isabel Cabezas, Psy.D., Diversity & Multicultural Inclusion Coordinator

Michelle Call, former ED of The Gala Pride and Diversity Center

Gabriel Granados, Behavioral Health Specialist Veteran Outreach Program

Nancy Jambor, Behavioral Health Clinician

Barry Johnson, TMHA Division Director, Education and Advocacy

Margaux Jones, FCNI Independent Living Program Supervisor

Claudia Lopez, L.C.S.W., Patient Rights Advocate

Annika Michetti, Behavioral Health Program Supervisor, Drug & Alcohol Services

Annika Morse, Diversity, Equity, & Inclusion - Cultural Competence Intern

Carlos Olson, Latino Outreach Program Supervisor

Juanita Patlan Mendez, FCNI WRAP Case Manager

Lilia Rangel-Reyes, Multicultural Specialist, Tri-Counties Regional Center

Jill Rietjens, L.M.F.T., Behavioral Health Division Manager

Anne Robin, L.M.F.T., Behavioral Health Administrator

Nasseem Rouhani, Behavioral Health Specialist

Kendra Scott, Veterans Service Administrative Assistance

Katherine Soule, Ph.D., Director UC Cooperative Extension & Youth, Families, & Communities

Nestor Veloz-Passalacqua, M.P.P., M.L.S., Diversity, Equity & Inclusion Program Manager

Laura Zarate, Behavioral Health Secretary

Pam Zweifel, NAMI & Behavioral Health Board Member



In this Issue:

New Public Charge Rule

CalHHS guides for understanding the new public charge rule are available in English and Spanish

Page
4

COVID-19 Impacts on Asian Americans, Native Hawaiians, and Pacific Islanders in California

Findings from UCLA's California Health Interview Survey

Page
5

November: Native American, American Indian, & Alaskan Native Heritage Month

Overview & issue-specific resources

Page
6

November 20th: Transgender Day of Remembrance

Historical background & resources for further learning

Page
7

December 1st: World AIDS Day

Overview & resources

Page
8

December 10th: Human Rights Day

Background information & Declaration details

Page
9

Dates to Remember

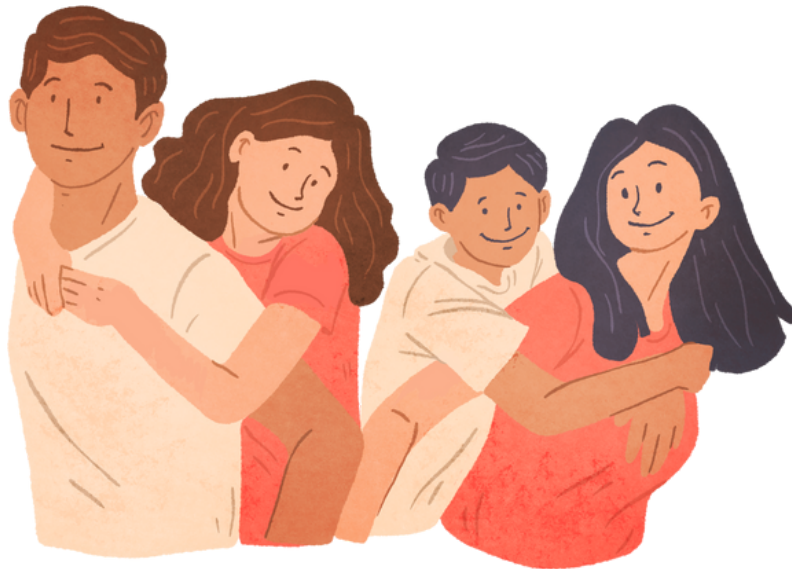
Page
10

Resources

Page
14

NEW PUBLIC CHARGE RULE

This rule removes barriers that previously prevented immigrants from accessing public benefits. The rule is effective December 23, 2022.

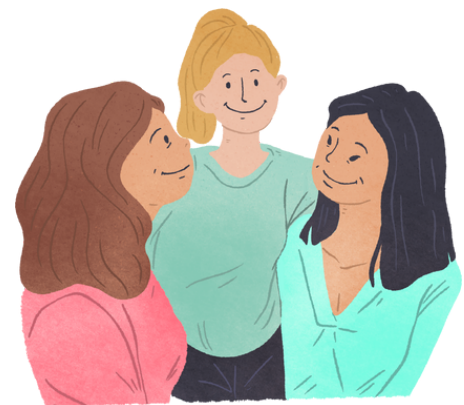


In September 2022, the Biden Administration released a new public charge regulation. This overturned the previous administration's expanded definition of public charge, which required consideration of receipt of additional public benefits. The Biden Administration's rule means that immigrants can access healthcare, housing, and food public benefits without immigration consequences.

The California Health and Human Services Agency (CalHHS) has released a Public Charge Guide as an aid in understanding the new public charge rule.

To access the guide in **English**, click [HERE](#).

To access the guide in **Spanish**, click [HERE](#).



The Impact of COVID-19 on California's Asian American, Native Hawaiian, and Pacific Islander Communities

The UCLA Center for Health Policy Research has released new findings from the 2022 California Health Interview Survey (CHIS) Preliminary COVID-19 Estimates Dashboard, which highlights **hate incidents, financial difficulties, and other COVID-19 experiences** among Asian Americans, Native Hawaiians, and Pacific Islanders in California.



1 in 12 (8%)

Asian American, Native Hawaiian, and Pacific Islander (AANHPI) adults in California experienced a hate incident due to COVID-19, compared to 2% of all Californians.

More than **4 in 5** (84%)

of AANHPI adults who experienced a hate incident experienced verbal abuse/insults

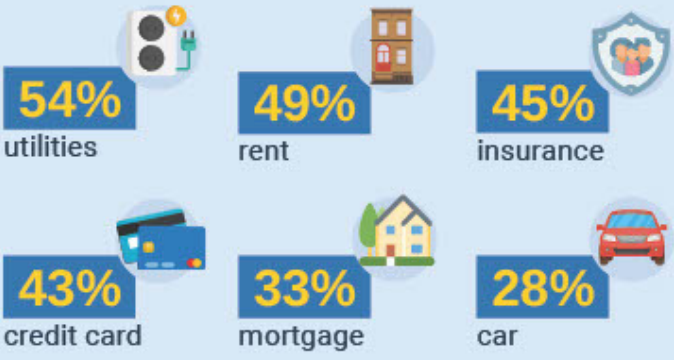


22%

of AANHPI adults witnessed another Asian American and NHPI person being treated unfairly due to their race/ethnicity



Among AANHPI adults who had financial difficulties due to COVID-19, what types of bills did they have trouble paying?



Nearly **1 in 8** (13%) AANHPI adults had difficulties performing work due to poor internet or lack of computer

According to AANHPI adults, have local and federal government done a good job managing the COVID-19 outbreak?

	Local government	Federal government
Strongly agree	16%	12%
Agree	47%	38%
Neither agree nor disagree	26%	27%
Disagree	7%	18%
Strongly disagree	4%	6%

Source: February–May 2022 California Health Interview Survey Preliminary COVID-19 Estimates



November: NATIVE AMERICAN, AMERICAN INDIAN, & ALASKAN NATIVE HERITAGE MONTH

November is a month to celebrate the culture, traditions, and histories of Native people, as well as their numerous contributions to our country.

Furthermore, this month is an important time to raise awareness for the unique challenges faced by Native people living in the United States today and in the past.

Click to learn more about:

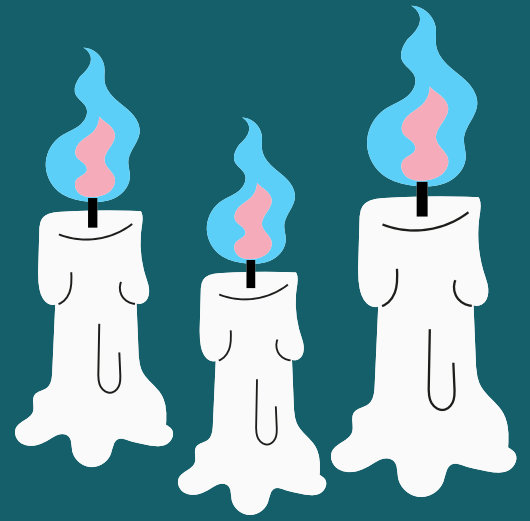
- [Retiring "Indian" school mascots](#)
- [Substance abuse and suicide in Native communities](#)
- [Missing and murdered Indigenous People crisis](#)



NOVEMBER

20

Transgender Day of Remembrance



On Transgender Day of Remembrance, we honor those who have lost their lives due to hate violence, suicide, and other hardships stemming from the systemic oppression of people who are transgender.

History

Rita Hester, a transgender woman, was killed in 1998. In response, Transgender Day of Remembrance was created by advocate Gwendolyn Ann Smith in 1999.

Learn More

- [GLAAD](#)
- [Human Rights Campaign](#)
- [Genders & Sexualities Alliances Network](#)





DECEMBER 1: WORLD AIDS DAY

LEARN MORE ABOUT AIDS.
HELP FIGHT THE STIGMA.

World AIDS Day is a time for our global community to join in the fight against AIDS, support people living with HIV/AIDS, and remember those who have passed away due to AIDS.

[Learn more about World AIDS Day](#)

HUMAN RIGHTS DAY

DECEMBER 10, 2022

On December 10th, 1948, the Universal Declaration of Human Rights was adopted by the United Nations General Assembly. This Declaration describes fundamental human rights that must be protected, such as the right to life, liberty, and security of person. Read the Declaration [here](#).



Dates to Remember

November

- National Native American, American Indian, and Alaskan Native Heritage Month
- National Stress Awareness Day (November 2)
- World Freedom Day (November 9)
- World Adoption Day (November 9)
- Veteran's Day (November 11)
- International Day for Tolerance (November 16)
- Transgender Day of Remembrance (November 20)
- Universal Children's Day (November 20)
- Thanksgiving (November 24)

December

- HIV/AIDS Awareness Month
- Universal Human Rights Month
- World AIDS Day (December 1)
- International Day for People with Disabilities (December 3)
- International Volunteer Day (December 5)
- Genocide Prevention Day (December 9)
- International Human Rights Day (December 10)
- New Year's Eve (December 31)



Resources

DRUG & ALCOHOL SERVICES

SAN LUIS OBISPO ADULT
2180 Johnson Ave
San Luis Obispo, CA 93401
805-781-4275
[Website](#)

SAN LUIS OBISPO YOUTH
277 South St., Suite T,
San Luis Obispo, 93401
805-781-4754
[Website](#)

PASO ROBLES ADULT
805 4th St
Paso Robles, CA 93446
805-226-3200
[Website](#)

ATASCADERO ADULT
3556 El Camino Real
Atascadero, CA 93422
805-461-6080
[Website](#)

GROVER BEACH ADULT
1523 Longbranch Ave
Grover Beach, CA 93433
(805) 473-7080
[Website](#)

PREVENTION & OUTREACH
277 South St
San Luis Obispo, CA 93401
805-781-4754
[Website](#)

MENTAL HEALTH SERVICES

SAN LUIS OBISPO YOUTH 0-5
MARTHA'S PLACE
CHILDREN'S ASSESSMENT
CENTER
2925 McMillan Avenue Suite
108
San Luis Obispo, CA 93401
805-781-4948
[Website](#)

SAN LUIS OBISPO YOUTH
1989 Vicente Avenue
San Luis Obispo, 93401
805-781-4179
[Website](#)

SAN LUIS OBISPO ADULT
2178 Johnson Avenue
Paso Robles, CA 93446
805-781-4700
[Website](#)

SAN LUIS OBISPO
PSYCHIATRIC HEALTH
FACILITY
2178 Johnson Avenue
San Luis Obispo, CA 93401
805-781-4711
[Website](#)

CRISIS STABILIZATION UNIT
2180 Johnson Avenue
San Luis Obispo, CA 93401
805-781-4275
[Website](#)

ARROYO GRANDE YOUTH
345 S. Halcyon Road
Arroyo Grande, CA 93420
805-473-7060
[Website](#)

ARROYO GRANDE ADULT
1350 East Grand Avenue
Arroyo Grande, CA 93420
805-474-2154
[Website](#)

ATASCADERO YOUTH AND
ADULT
5575 Hospital Drive
Atascadero, CA 93422
805-461-6060
[Website](#)

SERVICES AFFIRMING
FAMILY EMPOWERMENT
(SAFE)
[Website](#)

RESOURCES IN THE COMMUNITY

ACCESS SUPPORT NETWORK
(ASN)
1320 Nipomo St
San Luis Obispo, CA 93401
805-781-3660
[Website](#)

Resources (continued)

RESOURCES IN THE COMMUNITY (CONTINUED)

ASPIRE COUNSELING SERVICES 865 Aerovista Suite 130 San Luis Obispo, CA 93401 888-585-7373 Website	CENTRAL COAST INTERGROUP (ALCOHOLICS ANONYMOUS) 1333 Van Beurden Drive Los Osos, CA 93402 805-541-3211 Website	THE GALA PRIDE AND DIVERSITY CENTER 1060 Palm St San Luis Obispo, CA 93401 805-541-4252 Website
ATASCADERO - THE LINK FAMILY RESOURCE CENTER 4507 Del Rio Ave. Building #1 Atascadero, CA 93422 805-794-0217 Website	COMMUNITY ACTION PARTNERSHIP OF SAN LUIS OBISPO (CAPSLO) 1030 Southwood Dr San Luis Obispo, 93401 805-544-4355 Website	HOSPICE OF SLO COUNTY 1304 Pacific St San Luis Obispo, CA 93401 805-544-2266 Website
CAL POLY COUNSELING SERVICES (STUDENTS ONLY) 1 Grand Ave, Building 27 San Luis Obispo, CA 93405 805-756-2511 Website	COPE INTENSIVE OUTPATIENT PROGRAM 628 California Blvd. Suite A San Luis Obispo, CA 93401 805-541-9113 Website	LUMINA ALLIANCE 51 Zaca Lane, Suite 150 San Luis Obispo, CA 93401 805-545-8888 Website
CENTER FOR FAMILY STRENGTHENING (CFS) 3480 Higuera St, Suite 100 San Luis Obispo, CA 93401 805-543-6216 Website	CUESTA COLLEGE MENTAL HEALTH SERVICES (STUDENTS ONLY) Building 3100, Room: 3150 Highway 1 San Luis Obispo, CA 93405 805-546-3171 Website	PASO ROBLES - COMMUNITY COUNSELING CENTER 1035 Vine Street, Suite #A Paso Robles, CA 93446 805-543-7969 Website
CENTRAL COAST AREA NARCOTICS ANONYMOUS 800-549-7730 Website	FAMILY CARE NETWORK 1255 Kendall Rd San Luis Obispo, CA 93401 805-781-3535 Website	PASO ROBLES - THE LINK FAMILY RESOURCE CENTER 1802 Chestnut Street Paso Robles, CA 93446 805-794-0217 Website

Resources (continued)

RESOURCES IN THE COMMUNITY (CONTINUED)

SAN LUIS OBISPO -
COMMUNITY COUNSELING
CENTER
676 Pismo St
San Luis Obispo, CA 93401
805-543-0859
[Website](#)

TRANSITIONS-MENTAL
HEALTH ASSOCIATION
784 High St
San Luis Obispo, CA 93401
805-540-6500
[Website](#)

WILSHIRE COMMUNITY
SERVICES
285 South St, Suite J
San Luis Obispo, CA 93401
805-547-7025
[Website](#)

CRISIS RESOURCES VIA PHONE

CENTRAL COAST HOTLINE
800-783-0607
[Website](#)

CRISIS TEXT LINE
Text 'HOME' to 741-741
[Website](#)

FRIENDSHIP LINE (PEOPLE
AGED 60+)
800-971-0016
[Website](#)

LUMINA ALLIANCE 24 HOUR
CRISIS LINE (FOR SURVIVORS
OF SEXUAL/INTIMATE
PARTNER VIOLENCE)
805-545-8888
[Website](#)

NATIONAL SUICIDE
PREVENTION LINE
988
[Website](#)

NATIONAL ALLIANCE ON
MENTAL ILLNESS (NAMI)
HELPLINE
1-800-950-6264
Text 'NAMI' to 741-741
[Website](#)

SLO COUNTY MENTAL
HEALTH EVALUATION TEAM
(MHET)
800-838-1381
[Website](#)

SUBSTANCE ABUSE AND
MENTAL HEALTH SERVICES
ADMINISTRATION (SAMHSA)
NATIONAL HELPLINE
1-800-622-4357
[Website](#)

TREVOR LIFELINE (LGBTQ+
YOUTH)
1-866-488-7386
Text 'START' to 678-678
[Website](#)

Diversity, Equity, & Inclusion

Cultural Competence Newsletter



County of San Luis Obispo Health Agency