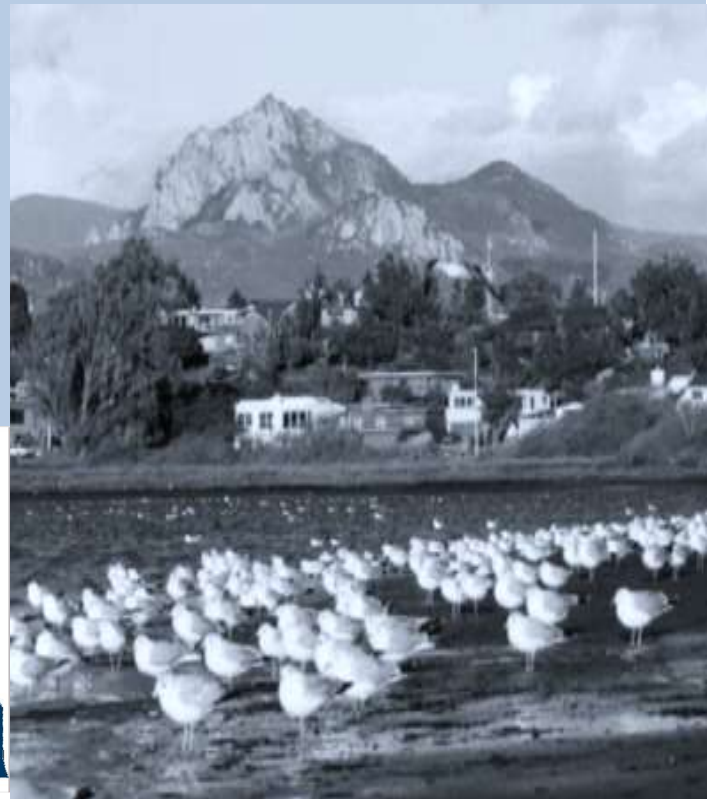


# Los Osos

## Community Plan

**Public Hearing Draft**  
June 8, 2020

COUNTY  
of SAN LUIS  
OBISPO



*This page left intentionally blank.*

# Los Osos Community Plan

Public ~~Review~~Hearing Draft

~~January 30, 2015~~

June 8, 2020

# County of San Luis Obispo

## **Board of Supervisors**

~~Frank R. Mecham~~[John Peschong](#), District 1

Bruce S. Gibson, District 2

Adam Hill, District 3

Lynn Compton, District 4

Debbie Arnold, District 5

## **Planning Commission**

~~Jim Irving~~[Jay Brown](#), District 1

~~Ken Topping~~[Michael Multari](#), District 2

~~Eric Meyer~~[Dawn Ortiz-Legg](#), District 3

~~Jim Harrison~~[TBA](#), District 4

Don Campbell, District 5

## **Department of Planning and Building**

~~James A. Bergman, AICP, Director~~

Trevor Keith, [Director](#)

[Rob Fitzroy](#), Assistant Director

[Airlin Singewald](#), Division Manager

~~Mike Wulkan~~[Brian Pedrotti](#), Supervising Planner *Retired\**

Kerry Brown, Project Manager

~~Jay Johnson, Senior~~[Cory Hahn](#), Planner

~~Michael Conger~~[Kylie Hensely](#), Planner

Jennifer ~~Jimenez~~[Guetschow](#), Senior Planner

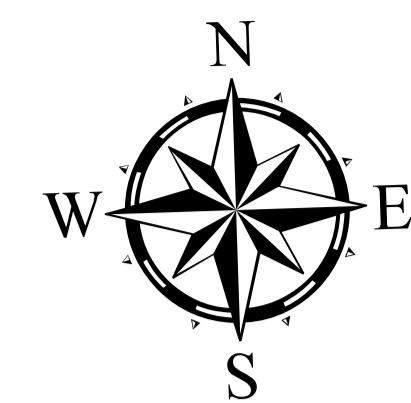
[Rebecca Whiteside](#), Mapping/Graphics Specialist



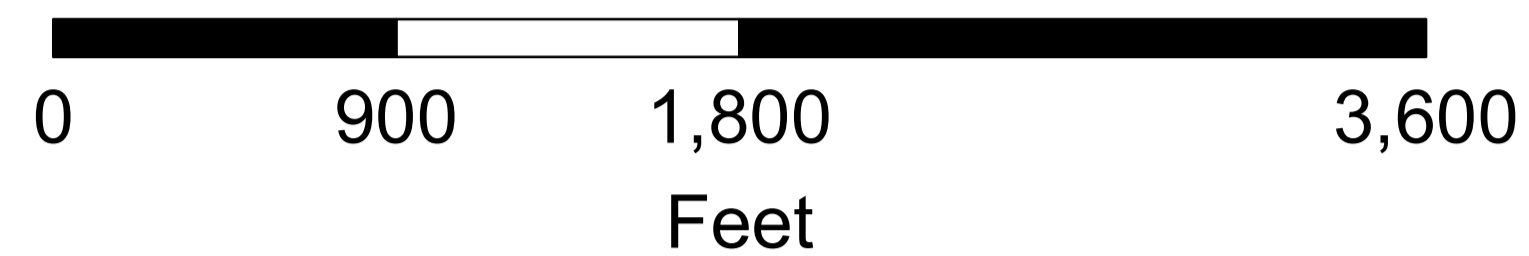
# Coastal Zone

## PROPOSED CHANGES

1. Whitehole to OS
2. Whitehole to OS
3. RSF to OS
4. Whitehole to RSF
5. OS to REC
6. Tract 1589 - RSF and RS to REC, OS and RSF
7. RS and RMF to RSF
8. OP to CR
9. OS to PF
10. OP to RMF
11. RSF to OP and include in CBD
12. REC to OS (take out of URL)
13. RMF to REC
14. RR to OS
15. RS to RR (split zoning-correct and make all RR)
16. RS to OS
17. REC, RS and RSF all to OS
18. RSF to PF
19. RS to OS
20. Conform URL to property line
21. RSF and RMF to RSF, RMF, and CS (special zone - all categories apply).
22. RMF to OS
23. RS to OS
24. RS to RSF (to correct split zoning)
25. RS to OS
26. CR and OP to PF and REC
27. RSF to RMF



Department of Planning & Building



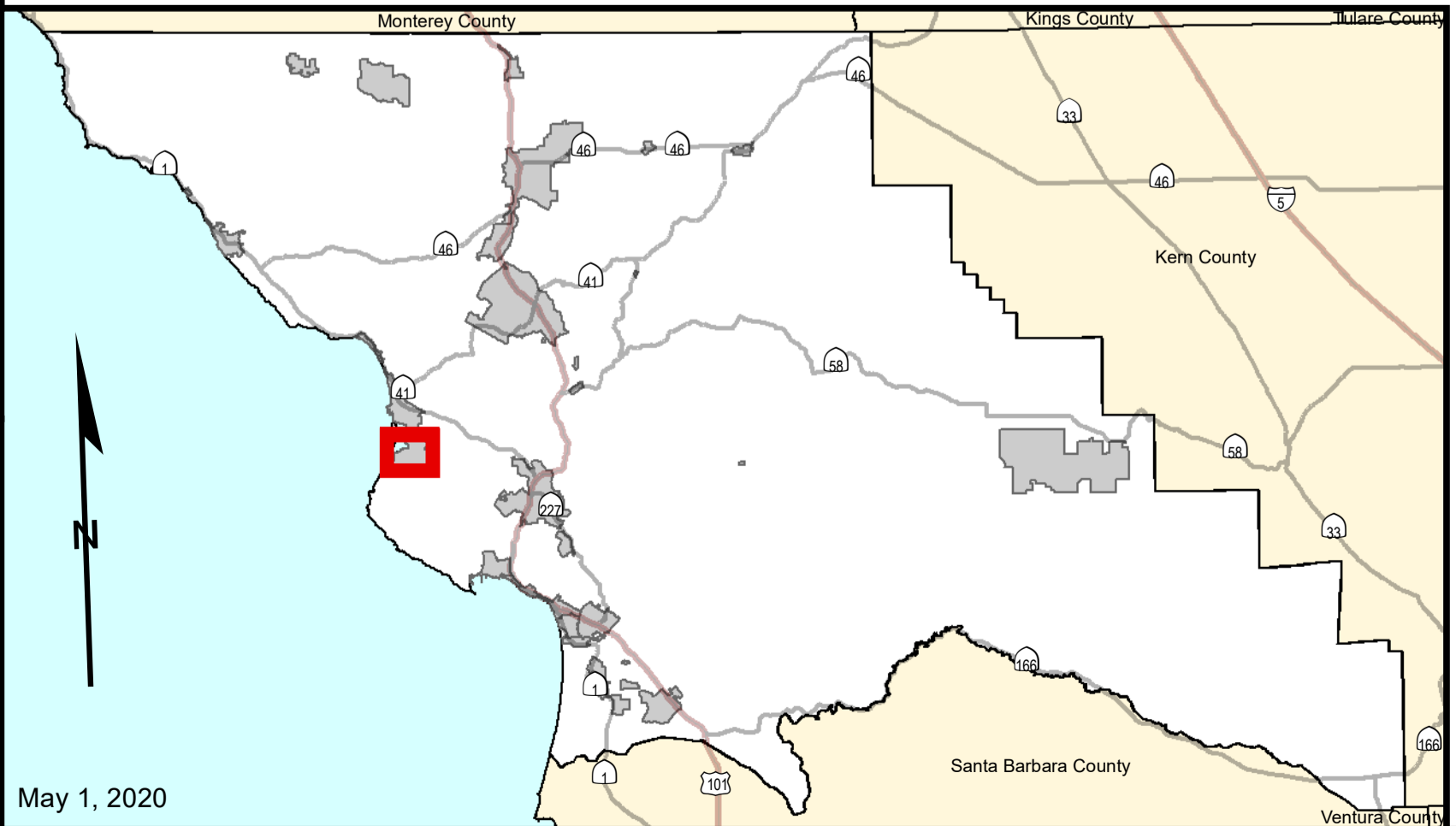
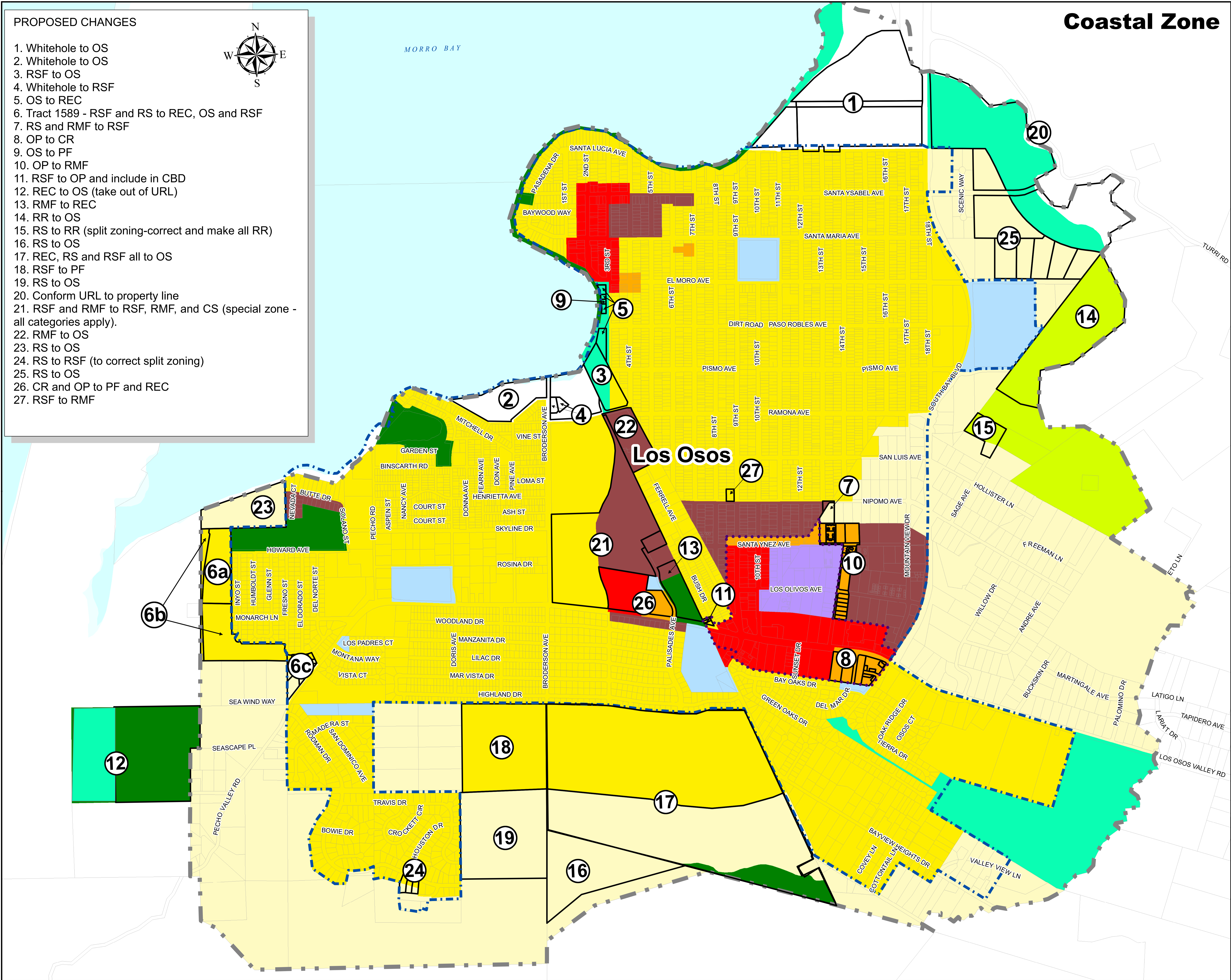
## LOS OSOS AREA UPDATE PROPOSED CHANGES

## LEGEND

- Proposed Central Business District
- Proposed URL - VRL
- Proposed Urban Services Line

## Land Use Category

- Agriculture
- Commercial Retail
- Commercial Service
- Industrial
- Multi-Land Use Category
- Office Professional
- Open Space
- Public Facility
- Recreation
- Rural Lands
- Residential Multi Family
- Residential Rural
- Residential Suburban
- Residential Single Family



May 1, 2020



*This page left intentionally blank.*



**PROPOSED CHANGES**

1. Whitehole to OS
2. Whitehole to OS
3. RSF to OS
4. Whitehole to RSF
5. OS to REC
6. Tract 1589 - RSF and RS to REC, OS and RSF
7. RS and RMF to RSF
8. OP to CR
9. OS to PF
10. OP to RMF
11. RSF to OP and include in CBD
12. REC to OS (take out of URL)
13. RMF to REC
14. RR to OS
15. RS to RR (split zoning-correct and make all RR)
16. RS to OS
17. REC, RS and RSF all to OS
18. RSF to PF
19. RS to OS
20. Conform URL to property line
21. RSF and RMF to RSF, RMF, and CS (special zone - all categories apply).
22. RSF to REC
23. RS to OS
24. RS to RSF (to correct split zoning)
25. RS to OS
26. CR and OP to REC and PF
27. RSF to REC and RMF



**Coastal Zone**



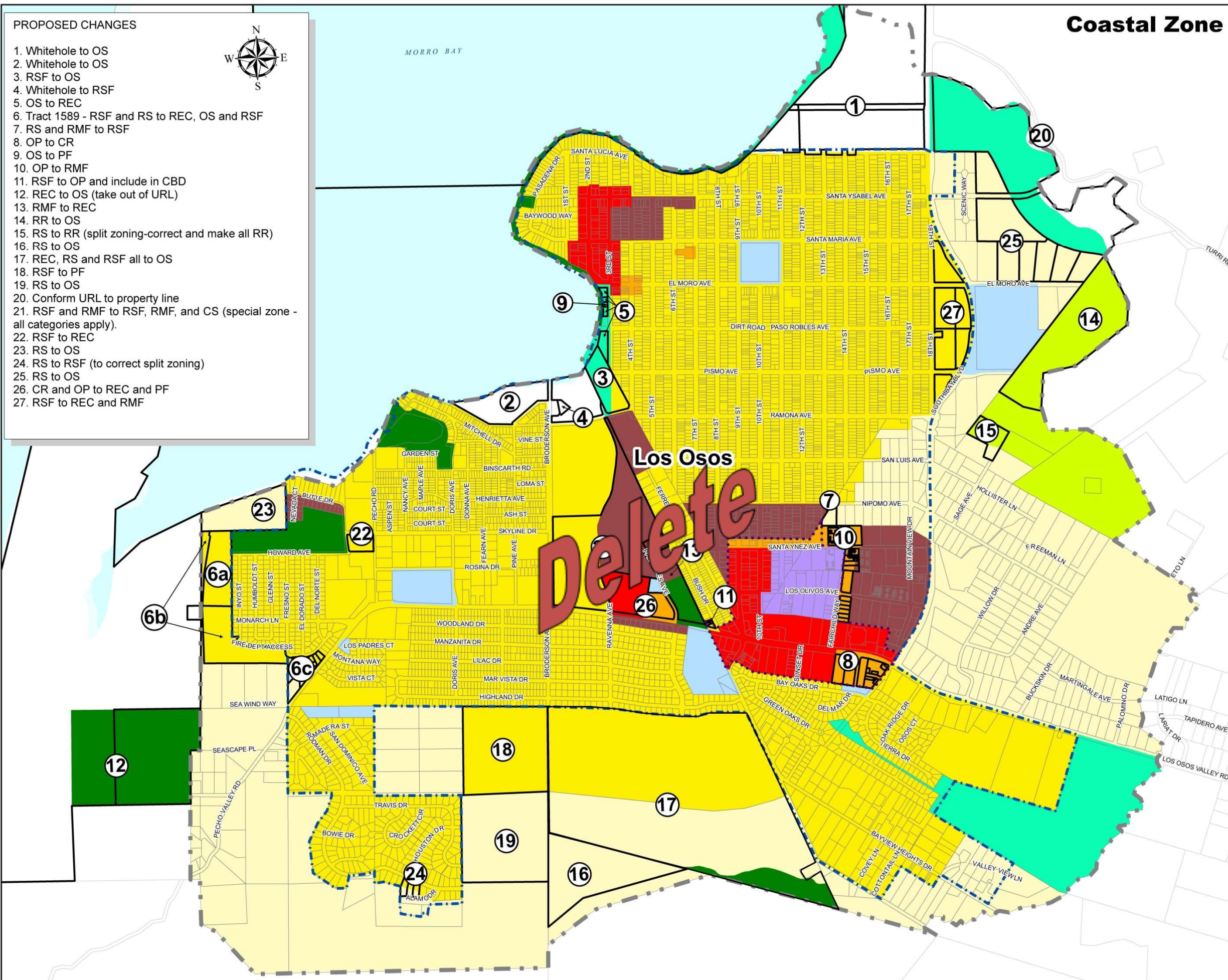
**LOS OSOS AREA UPDATE  
PROPOSED CHANGES**

**LEGEND**

**Land Use Category**

- Agriculture
- Commercial Retail
- Commercial Service
- Industrial
- Multi-Land Use Category
- Office Professional
- Open Space
- Public Facility
- Recreation
- Rural Lands
- Residential Multi Family
- Residential Rural
- Residential Suburban
- Residential Single Family

- Proposed URL - VRL
- Proposed Urban Services Line
- Proposed Central Business District





*This page left intentionally blank.*



# Table of Contents

---

## **CHAPTER 1: INTRODUCTION**

|      |  |     |
|------|--|-----|
| 1.1. | Purpose .....  | 1-1 |
| 1.2. | Organization of the Plan .....                                   | 1-1 |
| 1.3. | The Planning Process .....                                       | 1-3 |
| 1.4. | Community Plan Area and Setting .....                            | 1-4 |
| 1.5. | Relationship to the Local Coastal Program and General Plan ..... | 1-5 |

## **CHAPTER 2: COMMUNITY PLAN FRAMEWORK**

|        |   |                                     |
|--------|---|-------------------------------------|
| 2.1.   | Community Vision.....   | 2-1                                 |
| 2.2.   | Community Plan Issues .....   | 2-2                                 |
| 2.2.1. | Growth and Development.....   | 2-3                                 |
| 2.2.2. | Water Resources .....   | 2-3                                 |
| 2.2.3. | Environmental Resources.....  | 2-4                                 |
| 2.2.4. | Community Facilities and Infrastructure.....                          | 2-5                                 |
| 2.2.5. | Healthy Communities .....   | 2-5                                 |
| 2.3.   | Community Goals.....  | 2-5                                 |
| 2.4.   | Goals and Policies from the San Luis Obispo County General Plan ..... | 2-7                                 |
| 2.4.1. | Environment, Open Space, and Agriculture Policies .....               | 2-7                                 |
| 2.4.2. | Population and Growth Policies .....                                  | 2- <del>10</del> <a href="#">20</a> |
| 2.4.3. | Land Use and Community Design Policies.....                           | 2- <del>11</del> <a href="#">21</a> |
| 2.4.4. | Health and Quality of Life Policies.....                              | 2- <del>12</del> <a href="#">22</a> |
| 2.4.5. | Transportation and Circulation Policies .....                         | 2- <del>12</del> <a href="#">23</a> |
| 2.4.6. | Administration Policies.....  | 2- <del>13</del> <a href="#">24</a> |
| 2.5.   | Community Plan Policies and Programs .....                            | 2- <del>14</del> <a href="#">24</a> |
| 2.5.1. | Population and Economy .....  | 2- <del>14</del> <a href="#">24</a> |
| 2.5.2. | Public Services and Facilities .....                                  | 2- <del>15</del> <a href="#">25</a> |
| 2.5.3. | Land Use .....  | 2- <del>16</del> <a href="#">26</a> |
| 2.5.4. | Circulation .....   | 2- <del>19</del> <a href="#">30</a> |
| 2.5.5. | Environmental Resources.....  | 2- <del>21</del> <a href="#">33</a> |
| 2.5.6. | <a href="#">Financing Policies and Actions.....</a>                   | <a href="#">2-37</a>                |
| 2.6.   | Policy Implementation .....   | 2- <del>24</del> <a href="#">41</a> |

## **CHAPTER 3: LAND USE DESCRIPTIONS AND SETTING**

|        |  |                                   |
|--------|--|-----------------------------------|
| 3.1.   | Land Uses in the Community .....                 | 3-1                               |
| 3.2.   | Residential.....                                 | 3- <del>4</del> <a href="#">3</a> |
| 3.2.1. | Residential Single Family .....                  | 3- <del>4</del> <a href="#">3</a> |
| 3.2.2. | Residential Rural and Residential Suburban ..... | 3-4                               |
| 3.2.3. | Residential Multi-Family.....                    | 3-4                               |

|        |  |                |
|--------|--|----------------|
| 3.3.   | Commercial .....   | 3-6            |
| 3.3.1. | Central Business District.....                               | 3-6            |
| 3.3.2. | Baywood Commercial Area .....                                | 3-6            |
| 3.3.3. | Commercial Service within the Central Business District..... | 3-6            |
| 3.4.   | Mixed Use .....  | 3-8            |
| 3.4.1. | Morro Shores Mixed Use Area .....                            | 3-8            |
| 3.4.2. | Midtown Area.....  | 3-8            |
| 3.4.3. | <del>West of South Bay Boulevard.....</del>                  | <del>3-8</del> |
| 3.5.   | Public Facilities.....                                       | 3-910          |
| 3.6.   | Open Space .....   | 3-11           |
| 3.7.   | Recreation and Tourism.....                                  | 3-12           |
| 3.7.1. | Parks .....  | 3-12           |

**CHAPTER 4: ENVIRONMENTAL RESOURCES**

|              |   |            |
|--------------|---|------------|
| 4.1.         | The Environmental Setting .....   | 4-1        |
| 4.2.         | <u>Morro Bay Estuary and Its Watershed.....</u>                           | <u>4-1</u> |
| 4.2.4.3.     | Biological Resources .....  | 4-24       |
| 4.3.4.4.     | Cultural Resources .....  | 4-24       |
| 4.4.4.5.     | Water Resources.....  | 4-2        |
|              | .....   | 4-4        |
| 4.6.         | <u>Visual Resources .....</u>   | <u>4-5</u> |
| 4.5.4.7.     | Combining Designations .....  | 4-35       |
| 4.5.1.4.7.1. | .....   | L          |
|              | ocal Coastal Program (LCP).....   | 4-36       |
| 4.5.2.4.7.2. | .....   | G          |
|              | ecologic Study Area (GSA).....  | 4-36       |
| 4.5.3.4.7.3. | .....   | F          |
|              | lood Hazard (FH).....   | 4-46       |
| 4.5.4.4.7.4. | .....   | H          |
|              | istoric Site (H) .....  | 4-46       |
| 4.5.5.4.7.5. | .....   | A          |
|              | rchaeologically Sensitive Area (AS) .....                                 | 4-46       |
| 4.5.6.4.7.6. | .....   | S          |
|              | ensitive Resource Area (SRA) .....  | 4-46       |
| 4.5.7.4.7.7. | .....   | E          |
|              | ndangered Species Act and the Los Osos Habitat Conservation Plan<br>..... | 4-79       |

**CHAPTER 5: CIRCULATION ELEMENT**

|        |                             |     |
|--------|-----------------------------|-----|
| 5.1.   | Circulation Issues .....    | 5-3 |
| 5.1.1. | Existing Deficiencies ..... | 5-3 |



|        |  |        |
|--------|--|--------|
| 5.1.2. | Future Needs .....                                   | 5-4    |
| 5.2.   | Circulation Improvements .....                       | 5-4    |
| 5.2.1. | Roads .....  | 5-5    |
| A.     | Arterial, Collector, and Local Roads .....           | 5-5    |
| B.     | Los Osos Valley Road Corridor .....                  | 5-5    |
| C.     | Traffic Calming .....                                | 5-5    |
| D.     | Trees .....  | 5-78   |
| 5.2.2. | Pedestrian, Bicycle, and Equestrian Facilities ..... | 5-910  |
| A.     | Bikeways .....                                       | 5-910  |
| B.     | Pedestrian Facilities .....                          | 5-910  |
| C.     | Multi-Use Trails .....                               | 5-910  |
| 5.2.3. | Public Transit .....                                 | 5-1011 |
| 5.3.   | Other Strategies to Reduce Auto Dependency .....     | 5-1012 |
| 5.3.1. | Transportation Demand Management (TDM) .....         | 5-1012 |
| 5.4.   | <a href="#">Sea Level Rise and Circulation</a> ..... | 5-13   |

**CHAPTER 6: COASTAL ACCESS**

|        |   |      |
|--------|---|------|
| 6.1.   | Purpose and Organization .....  | 6-1  |
| 6.2.   | State and Local Coastal Access Policies .....   | 6-2  |
| 6.3.   | Implementation of Coastal Access Policies.....  | 6-3  |
| 6.4.   | Overview of Existing and Potential Coastal Access.....  | 6-3  |
| 6.4.1. | Baywood Park.....   | 6-4  |
| 6.4.2. | Sweet Springs .....   | 6-4  |
| 6.4.3. | Cuesta-by-the-Sea .....   | 6-45 |
| 6.4.4. | West of Pecho Area .....  | 6-5  |
| 6.4.5. | Opportunities for Future Public Access and Habitat<br><a href="#">Conservation Conserv.</a> ..... | 6-5  |
| 6.5.   | Management Objectives.....  | 6-6  |
| 6.6.   | California Coastal Trail .....  | 6-6  |
| 6.7.   | Coastal Access Inventory .....  | 6-8  |

**CHAPTER 7: PLANNING AREA STANDARDS**

|      |   |      |
|------|---|------|
| 7.1. | Introduction .....  | 7-1  |
| 7.2. | Chapter Organization .....  | 7-1  |
| 7.3. | Communitywide Standards.....  | 7-1  |
| A.   | Advisory Council Referral.....                                      | 7-1  |
| B.   | Resource Capacity and Service Availability.....                     | 7-1  |
| C.   | Fire Safety Clearance .....   | 7-2  |
| D.   | Los Osos Groundwater Basin .....                                    | 7-2  |
| E.   | Resource Protection – Concentration of Development<br>Required..... | 7-43 |

|      |                  |   |         |
|------|------------------|---|---------|
|      | F.               | Consistency with Circulation Element .....  | 7-5     |
|      | G.               | Coastal Access and Recreation .....   | 7-5     |
|      | H.               | Light and Glare .....   | 7-65    |
|      | I.               | Shoreline Development .....   | 7-6     |
|      | J.               | Drainage .....  | 7-78    |
|      | K.               | Habitat Conservation <a href="#">Plan</a> and <a href="#">Bio Resources</a> ..... | 7-9     |
|      | <del>K.</del> L. | Tree Protection .....   | 7-8 and |
|      |                  | <a href="#">Replacement</a> .....   | 7-14    |
|      | <del>L.</del> M. | Streets and Circulation.....  | 7-914   |
|      | <del>M.</del> N. | Coastal Access and Bayfront Development .....                                     | 7-1016  |
|      | <del>N.</del> O. | Building Height.....  | 7-1118  |
|      | <del>O.</del> P. | Affordable Housing .....  | 7-1118  |
|      | <del>P.</del> Q. | Residential Garage Size and Location .....  | 7-1118  |
|      | R.               | <a href="#">Construction Projects: Air Quality</a> .....                          | 7-19    |
|      | S.               | <a href="#">Historical Resources</a> .....  | 7-21    |
|      | T.               | <a href="#">Paleontological Resources</a> .....                                   | 7-21    |
|      | U.               | <a href="#">Noise</a> .....   | 7-23    |
|      | V.               | <a href="#">Critical Viewsheds</a> .....  | 7-25    |
|      | <del>Q.</del> W. | Residential Development and Design Guidelines.....                                | 7-1425  |
| 7.4. |                  | Combining Designation Standards.....  | 7-1627  |
|      | A.               | Morro Bay Shoreline (SRA) .....   | 7-1627  |
|      | B.               | Los Osos Ecosystem (SRA) – <a href="#">Required Finding</a> .....                 | 7-1729  |
|      | C.               | <a href="#">Archaeological Sensitive Areas</a> .....                              | 7-33    |
| 7.5. |                  | Land Use Category Standards .....   | 7-1942  |
|      | A.               | Commercial Retail (CR) .....  | 7-1942  |
|      | B.               | Commercial Service (CS) .....   | 7-2751  |
|      | C.               | Office and Professional (OP) .....  | 7-2852  |
|      | D.               | Open Space (OS) .....   | 7-2953  |
|      | E.               | Public Facilities (PF).....   | 7-3054  |
|      | F.               | Recreation, Public Facilities (REC, PF).....                                      | 7-3055  |
|      | G.               | Recreation (REC) .....  | 7-3156  |
|      | H.               | Residential Rural (RR) .....  | 7-3458  |
|      | I.               | Residential Multi-Family (RMF) .....  | 7-3559  |
|      | J.               | Morro Shores Mixed Use Area (RMF, RSF, CS) .....                                  | 7-3760  |
|      | <del>K.</del>    | <a href="#">West of South Bay Boulevard (RMF, REC)</a> .....                      | 7-42    |
|      | <del>L.</del> K. | Residential Single Family (RSF) .....   | 7-4464  |
|      | <del>M.</del> L. | Residential Suburban (RS).....  | 7-4970  |



**CHAPTER 8: PUBLIC FACILITIES FINANCING PLAN**

*This chapter has been omitted for the Public Review Draft. It will be included with the Public Hearing Draft.*

8.1 Key Findings and Summary .....8-1  
8.2 Overview of the community of Los Osos .....8-6  
8.3 Community Public Facility Needs and Costs .....8-9  
8.4 Funding Sources and Financing Mechanisms .....8-13

# Appendices

---

**APPENDIX A: LOS OSOS COMMUNITY ADVISORY COUNCIL – VISION FOR LOS OSOS**

A.1. Vision Statement for Los Osos ..... A-1  
A.2. Morro Bay Estuary ..... A-1  
A.3. Water ..... A-1  
A.4. Air ..... A-2  
A.5. Soils ..... A-2  
A.6. Planning and Zoning ..... A-2  
A.7. Growth ..... A-5  
A.8. Infrastructure ..... A-5  
A.9. Community Facilities and Services ..... A-6  
A.10. Business/Commercial Facilities ..... A-7  
A.11. Tourist-Oriented Facilities ..... A-8  
A.12. Conclusions ..... A-8  
A.13. Vision Team ..... A-9

**APPENDIX B: DESIGN CONCEPTS**

B.1. About Concept Plans .....B-1  
B.2. Sweet Springs Connection .....B-1  
B.3. Baywood Commercial Area .....B-1  
~~B.4. South Bay Boulevard Area .....B-1~~

~~**APPENDIX C: CHANGES TO THE ESTERO AREA PLAN**~~

~~C.1. Changes Affecting Chapter 1 .....C-1  
C.2. Changes Affecting Chapter 6 .....C-3  
C.3. Changes Affecting Areawide Standards, in Section III of Chapter 7 .....C-6  
C.4. Changes Affecting Rural Area Combining Designation Standards in  
Section IV of Chapter 7 .....C-9~~

~~**APPENDIX D: APPENDIX C: POPULATION AND ECONOMY**~~

~~D-1-C.1. Population and Housing .....C-2~~

|                                       |                        |     |
|---------------------------------------|------------------------|-----|
| <a href="#">D.1.1-C.1.1</a> .....     | Population Growth      |     |
| .....                                 |                        | C-2 |
| <a href="#">D.1.2-C.1.2</a> .....     | Age Distribution       |     |
| .....                                 |                        | C-2 |
| <a href="#">D.1.3-C.1.3</a> .....     | Household Size         | C-3 |
| <a href="#">D.1.4-C.1.4</a> .....     | Population Projections |     |
| .....                                 |                        | C-3 |
| <a href="#">D.1.5-C.1.5</a> .....     | Housing Vacancies and  |     |
| Occupancy Type .....                  |                        | C-4 |
| <a href="#">D.2-C.2</a> Economy ..... |                        | C-5 |
| <a href="#">D.2.1-C.2.1</a> .....     | Income                 | C-7 |
| <a href="#">D.2.2-C.2.2</a> .....     | Home Values            | C-8 |
| <a href="#">D.2.3-C.2.3</a> .....     | Future Opportunities   |     |
| .....                                 |                        | C-9 |

**APPENDIX E: APPENDIX D: STATUS OF PUBLIC FACILITIES**

|  |                      |                       |
|--|----------------------|-----------------------|
| <a href="#">E.1-D.1</a> Introduction .....     |                      | <a href="#">DE-1</a>  |
| <a href="#">E.2-D.2</a> Water Supply .....     |                      | <a href="#">ED-2</a>  |
| <a href="#">E.2.1-D.2.1</a> .....              | Background           | <a href="#">ED-2</a>  |
| <a href="#">E.2.2-D.2.2</a> .....              | Draft Basin Plan     | <a href="#">ED-3</a>  |
| <a href="#">E.2.3-D.2.3</a> .....              | Projected Supply     |                       |
| .....  |                      | D-7                   |
| <a href="#">E.2.4-D.2.4</a> .....              | Historical Demand    |                       |
| .....  |                      | D-8                   |
| <a href="#">E.2.5-D.2.5</a> .....              | Comparing Projected  |                       |
| Supply and Demand .....                        |                      | D-8                   |
| <a href="#">E.3-D.3</a> Sewage Disposal.....   |                      | <a href="#">ED-10</a> |
| <a href="#">E.4-D.4</a> Schools .....          |                      | <a href="#">ED-11</a> |
| <a href="#">E.4.1-D.4.1</a> .....              | Current Capacity and |                       |
| Enrollment Trends .....                        |                      | D-11                  |
| <a href="#">E.4.2-D.4.2</a> .....              | Projected Enrollment |                       |
| .....  |                      | D-11                  |
| <a href="#">E.5-D.5</a> Parks.....             |                      | <a href="#">ED-12</a> |
| <a href="#">E.6-D.6</a> Fire Protection .....  |                      | <a href="#">ED-12</a> |
| <a href="#">E.7-D.7</a> Police Protection..... |                      | <a href="#">ED-12</a> |
| <a href="#">E.8-D.8</a> Libraries.....         |                      | <a href="#">ED-13</a> |
| <a href="#">E.9-D.9</a> Human Services.....    |                      | <a href="#">ED-13</a> |
| <a href="#">E.10-D.10</a> .....                | Drainage             | <a href="#">ED-13</a> |

**APPENDIX E: TREES**



|   |                      |               |
|---|----------------------|---------------|
| <a href="#">APPENDIX F:</a> .....                   | <a href="#">HE.1</a> | Preservation, |
| Maintenance and Growth of the Tree population ..... | <a href="#">EH-1</a> |               |

|                                   |                      |             |
|-----------------------------------|----------------------|-------------|
| <a href="#">APPENDIX G:</a> ..... | <a href="#">HE.2</a> | Benefits of |
| Trees .....                       | <a href="#">EH-2</a> |             |

|  |                      |  |
|--|----------------------|--|
| <a href="#">HE.3</a> Areas for consideration for Tree Corridor ..... | <a href="#">EH-3</a> |  |
|--|----------------------|--|

|                                   |  |  |
|-----------------------------------|--|--|
| <a href="#">APPENDIX H:</a> ..... |  |  |
|-----------------------------------|--|--|

**[APPENDIX I-APPENDIX F: CIRCULATION APPENDIX](#)**

|   |     |
|---|-----|
| <a href="#">I.1.F.1.</a> Existing Deficiencies..... | F-1 |
|---|-----|

|  |     |
|--|-----|
| <a href="#">I.2.F.2.</a> Proposed Improvements ..... | F-2 |
|--|-----|

|                   |     |
|-------------------|-----|
| A. Arterials..... | F-2 |
|-------------------|-----|

|                               |     |
|-------------------------------|-----|
| 1. Los Osos Valley Road ..... | F-2 |
|-------------------------------|-----|

|   |     |
|---|-----|
| 2. Los Osos Valley Road Corridor Improvements ..... | F-2 |
|---|-----|

|  |     |
|--|-----|
| 3. Los Osos Valley Road Corridor Study Guidelines for Amenities, Central Business District ..... | F-9 |
|--|-----|

|                     |      |
|---------------------|------|
| B. Collectors ..... | F-12 |
|---------------------|------|

|                      |      |
|----------------------|------|
| C. Local Roads ..... | F-13 |
|----------------------|------|

**[APPENDIX GI: Capital Improvements Costs FUNDING SOURCES AND FUNDING MECHANISMS](#)**

|   |                     |
|---|---------------------|
| <a href="#">I.3.G.1.</a> Capital Improvement Costs by Type..... | <a href="#">G+1</a> |
|---|---------------------|

|  |                     |
|--|---------------------|
| <a href="#">I.4.G.2.</a> CSD Utility Connection Fees ..... | <a href="#">G+3</a> |
|--|---------------------|

|   |                     |
|---|---------------------|
| <a href="#">I.5.G.3.</a> County Public Facility Fees Calculations ..... | <a href="#">G+5</a> |
|---|---------------------|

|   |                     |
|---|---------------------|
| <a href="#">I.6.G.4.</a> County Road Improvement Fees ..... | <a href="#">G+7</a> |
|---|---------------------|

|   |                     |
|---|---------------------|
| <a href="#">I.7.G.5.</a> Matrix of Funding Sources and Financing Mechanisms ..... | <a href="#">G+9</a> |
|---|---------------------|

|   |                      |
|---|----------------------|
| <a href="#">I.8.G.6.</a> Funding Sources and Financing Mechanisms ..... | <a href="#">G+11</a> |
|---|----------------------|

**[APPENDIX J-APPENDIX H: DEFINITIONS AND ACRONYMS](#)**

|  |                      |
|--|----------------------|
| <a href="#">J.1.H.1.</a> Definitions ..... | <a href="#">HG-1</a> |
|--|----------------------|

|   |                      |
|---|----------------------|
| <a href="#">J.2.H.2.</a> Acronyms ..... | <a href="#">HG-7</a> |
|---|----------------------|

**[APPENDIX H: Trees](#)**

# List of Figures

---

***Chapter 1***

|   |     |
|---|-----|
| Figure 1-1: Los Osos Community Plan Area..... | 1-2 |
|---|-----|

|  |     |
|--|-----|
| Figure 1-2: Relationship of the Los Osos Community Plan to the General Plan..... | 1-6 |
|--|-----|

|             |   |     |
|-------------|---|-----|
| Figure 1-3: | Relationship of the Los Osos Community Plan<br>to the Local Coastal Program ..... | 1-7 |
|-------------|---|-----|

**Chapter 2**

No Figures

**Chapter 3**

|             |   |      |
|-------------|---|------|
| Figure 3-1: | Los Osos Urban Area – Neighborhoods.....              | 3-3  |
| Figure 3-2: | Residential Areas in Los Osos .....                   | 3-5  |
| Figure 3-3: | Commercial Areas in Los Osos .....                    | 3-7  |
| Figure 3-4: | Mixed Use Areas in Los Osos.....                      | 3-9  |
| Figure 3-5: | Existing Public Facilities in Los Osos .....          | 3-10 |
| Figure 3-6: | Proposed Public Facilities in Los Osos .....          | 3-11 |
| Figure 3-7: | Open Space, Recreation, and Tourism in Los Osos ..... | 3-13 |

**Chapter 4**

|             |  |        |
|-------------|--|--------|
| Figure 4-1: | Los Osos Greenbelt.....                        | 4-811  |
| Figure 4-2: | Geologic Study Area .....                      | 4-912  |
| Figure 4-3: | Los Osos Ecosystem ESHA .....                  | 4-1013 |
| Figure 4-4: | Other Combining Designations in Los Osos ..... | 4-11   |
| Figure 4-4: | Archaeologically Sensitive Area .....          | 4-14   |
| Figure 4-5: | Flood Hazard Areas .....                       | 4-15   |
| Figure 4-6: | Sea Level Rise.....                            | 4-16   |

**Chapter 5**

|             |  |        |
|-------------|--|--------|
| Figure 5-1: | Los Osos Valley Road – Cross Section with Median .....             | 5-7    |
| Figure 5-2: | Los Osos Valley Road – Cross Section with<br>Left Turn Lane.....   | 5-7    |
| Figure 5-3: | Illustration of Los Osos Valley Road<br>Corridor Improvements..... | 5-89   |
| Figure 5-4: | Circulation Plan .....   | 5-1214 |
| Figure 5-5: | Bikeways.....  | 5-1315 |
| Figure 5-6: | Trails and Trail Corridors .....                                   | 5-1416 |
| Figure 5-7: | Coastal Access Points .....  | 5-1517 |

**Chapter 6**

|             |   |      |
|-------------|---|------|
| Figure 6-1: | Potential Alignment of the California Coastal Trail ..... | 6-7  |
| Figure 6-2: | Improvement of Coastal Access .....                       | 6-8  |
| Figure 6-3: | Coastal Access Master Plan – Los Osos Map 8A .....        | 6-12 |
| Figure 6-4: | Coastal Access Master Plan – Los Osos Map 8B.....         | 6-13 |
| Figure 6-5: | Coastal Access Master Plan – Los Osos Map 8C.....         | 6-14 |

**Chapter 7**

|                         |  |      |
|-------------------------|--|------|
| Figure 7-1:             | Sea Level Rise and Inundation Zone .....             | 7-6  |
| Figure 7-1: Figure 7-2: | Los Osos Lowland Areas – Drainage Plan Required..... | 7-89 |
| Figure 7-3:             | Habitat Conservation Plan Area .....                 | 7-12 |

|   |        |
|---|--------|
| Figure 7-2:Figure 7-4: .....  | S      |
| street Tree Location .....  | 7-1016 |
| Figure 7-3:Figure 7-5: .....  | L      |
| Los Osos Height Limits .....  | 7-1117 |
| Figure 7-4:Figure 7-6: .....  | B      |
| Bayfront Access .....   | 7-1218 |
| Figure 7-5:Figure 7-7: .....  | R      |
| Residential Garage Size and Location.....   | 7-1319 |
| Figure 7-8:     Paleontological Resources .....   | 7-23   |
| Figure 7-6:Figure 7-9: .....  | W      |
| Wall and Fence Designs .....  | 7-1527 |
| Figure 7-7:Figure 7-10: .....   | W      |
| Wetland Setbacks .....  | 7-1729 |
| Figure 7-8:Figure 7-11: .....   | L      |
| Los Osos Ecosystem SRA (ESHA) .....   | 7-1833 |
| Figure 7-12:     Archaeological Sensitive Area .....  | 7-42   |
| Figure 7-9:Figure 7-13: .....   | L      |
| Los Osos Central Business District and<br>Baywood Commercial Area .....                             | 7-1943 |
| Figure 7-10:Figure 7-14: .....  | P      |
| Pedestrian-Oriented Design Concept.....   | 7-2246 |
| Figure 7-11:Figure 7-15: .....  | E      |
| Example of Façade Building Designs .....  | 7-2448 |
| Figure 7-12:Figure 7-16: .....  | B      |
| Baywood Commercial Area .....   | 7-2549 |
| Figure 7-13:Figure 7-17: .....  | O      |
| O/P Category on West Side of 7 <sup>th</sup> Street<br>between El Moro and Santa Maria Avenues..... | 7-2853 |
| Figure 7-14:Figure 7-18: .....  | S      |
| Sweet Springs Area and Baywood Park Area<br>West of 3 <sup>rd</sup> Street .....                    | 7-2954 |
| Figure 7-15:Figure 7-19: .....  | B      |
| Roderson Site .....   | 7-3055 |
| Figure 7-16:Figure 7-20: .....  | M      |
| Midtown Site (Los Osos Valley Road at<br>Palisades Avenue).....                                     | 7-3156 |
| Figure 7-17:Figure 7-21: .....  | G      |
| Golf Course North of Howard Avenue.....   | 7-3257 |
| Figure 7-18:     2.7 Acre Area at Southwest Corner of Pecho Road<br>and Skyline Drive .....         | 7-33   |
| Figure 7-19:Figure 7-22: .....  | S      |
| Santa Ysabel Avenue Coastal Access.....   | 7-3458 |

|   |                 |
|---|-----------------|
| Figure 7-20:Figure 7-23: .....  | C               |
| reekside Area.....  | 7-3459          |
| Figure 7-21:Figure 7-24: .....  | R               |
| MF West of Pecho Road .....   | 7-3560          |
| Figure 7-22:Figure 7-25: .....  | R               |
| MF within ½ Mile from CBD .....   | 7-3661          |
| Figure 7-23: <del>Northwest Corner of Mountain View Drive<br/>and Santa Ynez Avenue .....</del> | <del>7-37</del> |
| Figure 7-24:Figure 7-26: .....  | M               |
| orro Shores Mixed Use .....   | 7-3862          |
| Figure 7-25: <del>South Bay Boulevard Site .....</del>  | <del>7-43</del> |
| Figure 7-26:Figure 7-27: .....  | B               |
| ayview Heights .....  | 7-4466          |
| Figure 7-27:Figure 7-28: .....  | C               |
| uesta-by-the-Sea, Martin Tract,<br>Ramona / Broderson Avenues.....                              | 7-4567          |
| Figure 7-28:Figure 7-29: .....  | B               |
| aywood Park Area .....  | 7-4668          |
| Figure 7-29:Figure 7-30: .....  | C               |
| abrillo Estates .....   | 7-4769          |
| Figure 7-30:Figure 7-31: .....  | M               |
| orro Shores Area .....  | 7-4870          |
| Figure 7-31:Figure 7-32: .....  | H               |
| ighlands Neighborhood .....   | 7-4971          |
| Figure 7-32:Figure 7-33: .....  | L               |
| os Osos Creek / Eto Lake Corridor.....  | 7-5072          |
| Figure 7-33:Figure 7-34: .....  | W               |
| est of Pecho Area .....   | 7-5274          |
| Figure 7-34:Figure 7-35: .....  | S               |
| outhwestern Hillside: Subareas .....  | 7-5375          |

Chapter 8

|   |             |
|---|-------------|
| Figure 8-1: <u>Distribution of Public Facility Costs.....</u> | <u>8-10</u> |
|---|-------------|

Appendix A

No Figures

Appendix B

|                             |  |     |
|-----------------------------|--|-----|
| Figure A-1:Figure B-1:..... | Concept Plan: Sweet<br>Springs Connection..... | B-3 |
| Figure A-2:Figure B-2:..... | Concept Plan:<br>Baywood Commercial Area ..... | B-5 |



Figure A-3: Concept Plan: South Bay Blvd Area ..... B-7

Appendix B

*No Figures*

Appendix C

Figure C-1: Los Osos Population Growth ..... CD-2  
Figure C-2: Population Age Distribution ..... CD-3  
Figure C-3: Housing Vacancies and Occupancy Type ..... CD-5

Appendix D

Figure C-4:Figure D-1: ..... Services Provided by  
Los Osos CSD ..... DE-2  
Figure C-5:Figure D-2: ..... Los Osos Water  
Purveyors..... DE-3  
Figure C-6:Figure D-3: ..... Comparison of  
Sustainable Yield and Demand ..... DE-10  
Figure C-7:Figure D-4: ..... Areas of Localized  
Flooding..... DE-14

Appendix E

*No Figures*

Appendix F

Figure C-1:Figure F-1: ..... Conceptual Los Osos  
Valley Road Sections with Median ..... F-3  
Figure C-2:Figure F-2: ..... Conceptual Los Osos  
Valley Road Improvements –  
Bush Drive to Sunset Drive ..... F-4  
Figure C-3:Figure F-3: ..... Los Osos Valley Road at  
Bush Drive ..... F-4  
Figure C-4:Figure F-4: ..... Los Osos Valley Road at  
Bayview Heights Drive..... F-5  
Figure C-5:Figure F-5: ..... Los Osos Valley Road at  
10<sup>th</sup> Street ..... F-5  
Figure C-6:Figure F-6: ..... Los Osos Valley Road at  
Sunset Drive – Option 1..... F-6

|   |  |     |
|---|--|-----|
| <a href="#">Figure C-7:Figure F-7: .....</a>  | Los Osos Valley Road at<br>Sunset Drive – Option 2.....                                  | F-7 |
| <a href="#">Figure C-8:Figure F-8: .....</a>  | Los Osos Valley Road<br>Improvements –<br>Sunset Drive to South Bay Boulevard.....       | F-7 |
| <a href="#">Figure C-9:Figure F-9: .....</a>  | Los Osos Valley Road at<br>Fairchild Way.....  | F-8 |
| <a href="#">Figure C-10:Figure F-10:.....</a> | Los Osos Valley Road at<br>South Bay Boulevard .....                                     | F-8 |
| <a href="#">Figure C-11:Figure F-11:.....</a> | Los Osos Valley Road<br>Sections between<br>South Bay Boulevard and Los Osos Creek ..... | F-9 |

[No Figures](#)

[Appendix DAppendix G](#)

[No Figures](#)

[Appendix H](#)

[No Figures](#)

# List of Tables

---

## Chapter 1

Table 1-1: General Plan Components..... 1-5

## Chapter 2

Table 2-1: Community Planning Issues ..... 2-2

Table 2-2: Summary of Los Osos Community Plan Policies and their Implementation..... 2-25

Table 2-3: Program Implementation..... 2-27

## Chapter 3

Table 3-1: Land Use Summary..... 3-2

## Chapter 4

No Tables

## Chapter 5

Table 5-1: Circulation Deficiencies Identified by the County ..... 5-3

Table 5-2: Circulation Deficiencies Identified by the Community..... 5-3

Table 5-3: Needed Circulation Improvements ..... 5-6

## Chapter 6

Table 6-1: Policies concerning Coastal Access ..... 6-2

Table 6-2: Coastal Access Inventory..... 6-9

## Chapter 7

Table 7-1: Required Wetland Setbacks ..... 7-16

Table 7-2: Minimum Setbacks – Cabrillo Estates ..... 7-48

Table 7-3: Minimum Setbacks – Redwood Fields, Los Osos Highlands (Tract 84), Morro Palisades (Tract 122)..... 7-49

## Chapter 8

[Table 8-1: Summary of preliminary sources and uses ..... 8-3](#)

[Table 8-2: Population Household and Jobs ..... 8-8](#)

[Table 8-3: Los Osos Development Potential ..... 8-9](#)

[Table 8-4: Los Osos Capital Improvement Program ..... 8-10](#)

[Table 8-5: Summary Matrix of Funding Sources and Financing – Mechanisms ..... 8-14](#)

## Appendix A

No Tables

## Appendix B

No Tables

Table A-1: Summary of Modifications to the Estero Area Plan.....CB-1

Appendix B Appendix C

Table B-1: Table C-1: ..... Changes in Population  
Growth, 1970-2010 ..... D-2

Table B-2: Table C-2: ..... 2010 Population Age  
Distribution..... D-3

Table B-3: Table C-3: ..... Population Projections  
..... D-4

Table B-4: Table C-4: ..... Employment by  
Industry (including Armed Forces) ..... D-6

Table B-5: Table C-5: ..... Labor Force D-7

Table B-6: Table C-6: ..... Place of Work – Los  
Osos and County Labor Force..... D-7

Table B-7: Table C-7: ..... Household Incomes  
..... D-8

Table B-8: Table C-8: ..... House Values – Owner  
Occupied..... D-8

Appendix C Appendix D

Table C-1: Table D-1: ..... S  
strategies for Managing the Los Osos  
Groundwater Basin..... E-5

Table C-2: Table D-2: ..... G  
groundwater Production in 2012 ..... E-8

Table C-3: Table D-3: ..... S  
ustainable Yield and Demand..... E-9

Table C-4: Table D-4: ..... C  
capacity and Enrollment, Schools Serving Los Osos ..... E-12

Table C-5: Table D-5: ..... F  
ormulas for Library Facilities by Community Size ..... E-13

Table C-6: Table D-6: ..... R  
ecommended Library Facilities, Los Osos..... E-13

Appendix D Appendix E D

*No Tables*

Appendix E Appendix F

*No Tables*

*No Tables*

Appendix G



[Table G-1: Capital Improvement cost by improvement type .....G-2](#)  
[Table G-2: CSD Utility Connection fees .....G-4](#)  
[Table G-3: County Public Facilities Fees .....G-6](#)  
[Table G-4: County Road Improvement Fees .....G-8](#)  
[Table G-5: Matrix of Finding Sources and Financing Mechanisms .....G-10](#)  
[Table G-6: Illustrative EIFD Calculation .....G-15](#)  
[Table G-7: LOCSD Water Utility Impact Fee Schedule .....G-19](#)

[Appendix H](#)

[No Figures](#)

*This page left intentionally blank.*