

APPENDIX C

Off-Site NCSD Improvements Mapbook



DANA RESERVE
NCSD Sewer Improvements

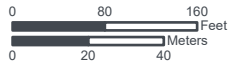
Page 1 of 8

2 - Proposed Sanitary Sewer Lift Station for Dana Reserve Development

— Proposed Dana Reserve Connection

□ Dana Reserve Specific Plan Area

San Luis Obispo County, CA
 NAD 1983 StatePlane California
 V FIPS 0405 Feet
 35.0465°N 120.4944°W

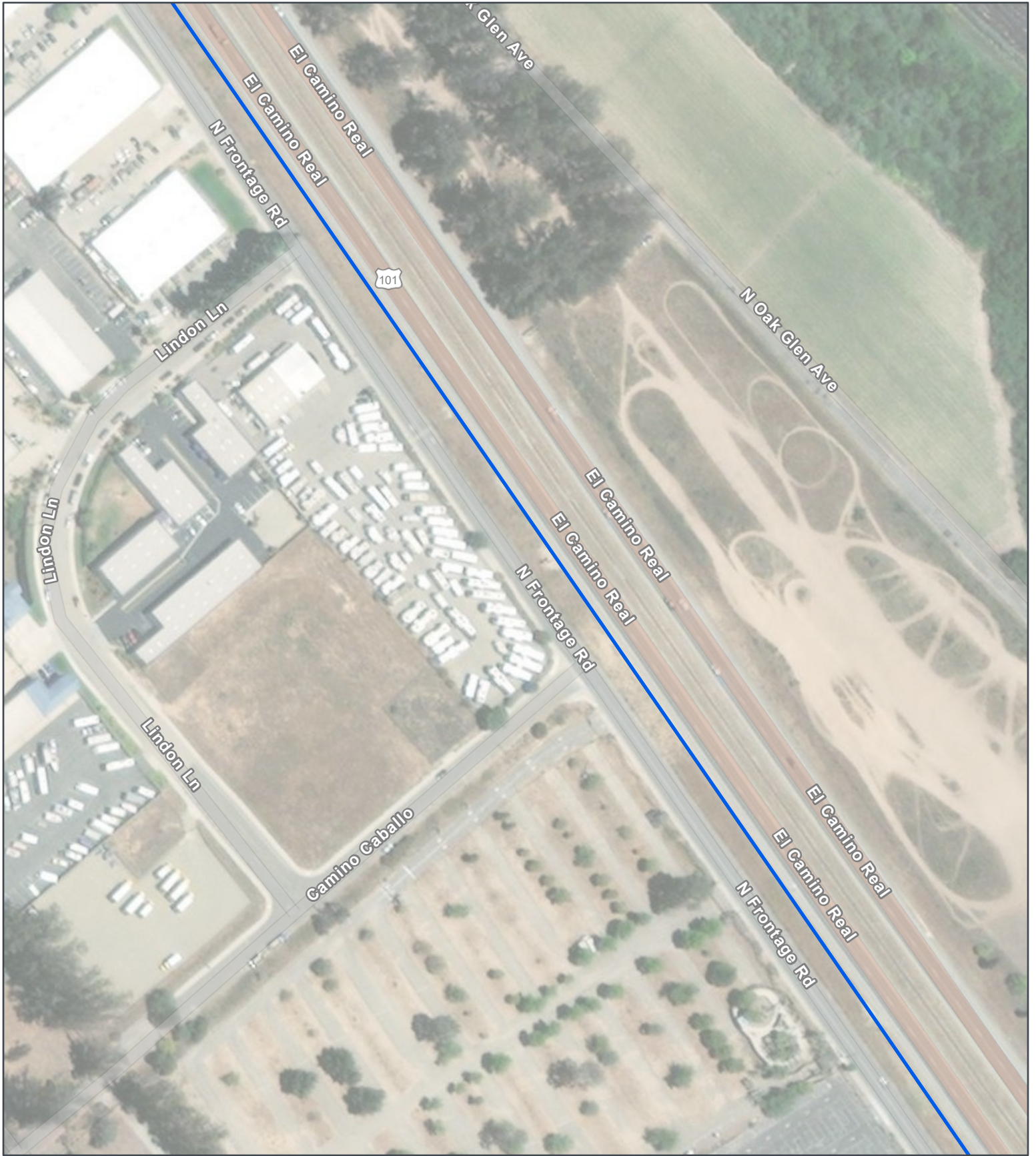


Base Map: ESRI ArcGIS Online,
 accessed April 2022
 Updated: 4/25/2022
 Project No. 64873
 Aprx: 64873_DanaReserve_NCSD
 Layout: NCSD Sewer Improvements



1:2,000





DANA RESERVE
NCSD Sewer Improvements

Page 2 of 8



- 1 - Sanitary Sewer Extension
- Proposed Dana Reserve Connection

San Luis Obispo County, CA
 NAD 1983 StatePlane California
 V FIPS 0405 Feet
 35.0429°N 120.4906°W

Base Map: ESRI ArcGIS Online,
 accessed April 2022
 Updated: 4/25/2022
 Project No. 64873
 Aprx: 64873_DanaReserve_NCSD
 Layout: NCSD Sewer Improvements



1:2,000





DANA RESERVE
NCSD Sewer Improvements

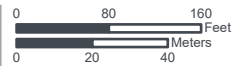
Page 3 of 8

- Proposed Dana Reserve Connection
- Replace 10" with 15" Frontage Rd Trunk Sewer



San Luis Obispo County, CA
 NAD 1983 StatePlane California
 V FIPS 0405 Feet
 35.0393°N 120.4875°W

Base Map: ESRI ArcGIS Online,
 accessed April 2022
 Updated: 4/25/2022
 Project No. 64873
 Aprx: 64873_DanaReserve_NCSD
 Layout: NCSD Sewer Improvements



1:2,000





DANA RESERVE
NCSD Sewer Improvements

Page 4 of 8



- 3 - Sanitary Sewer Replacement
- Replace 10" with 15" Frontage Rd Trunk Sewer

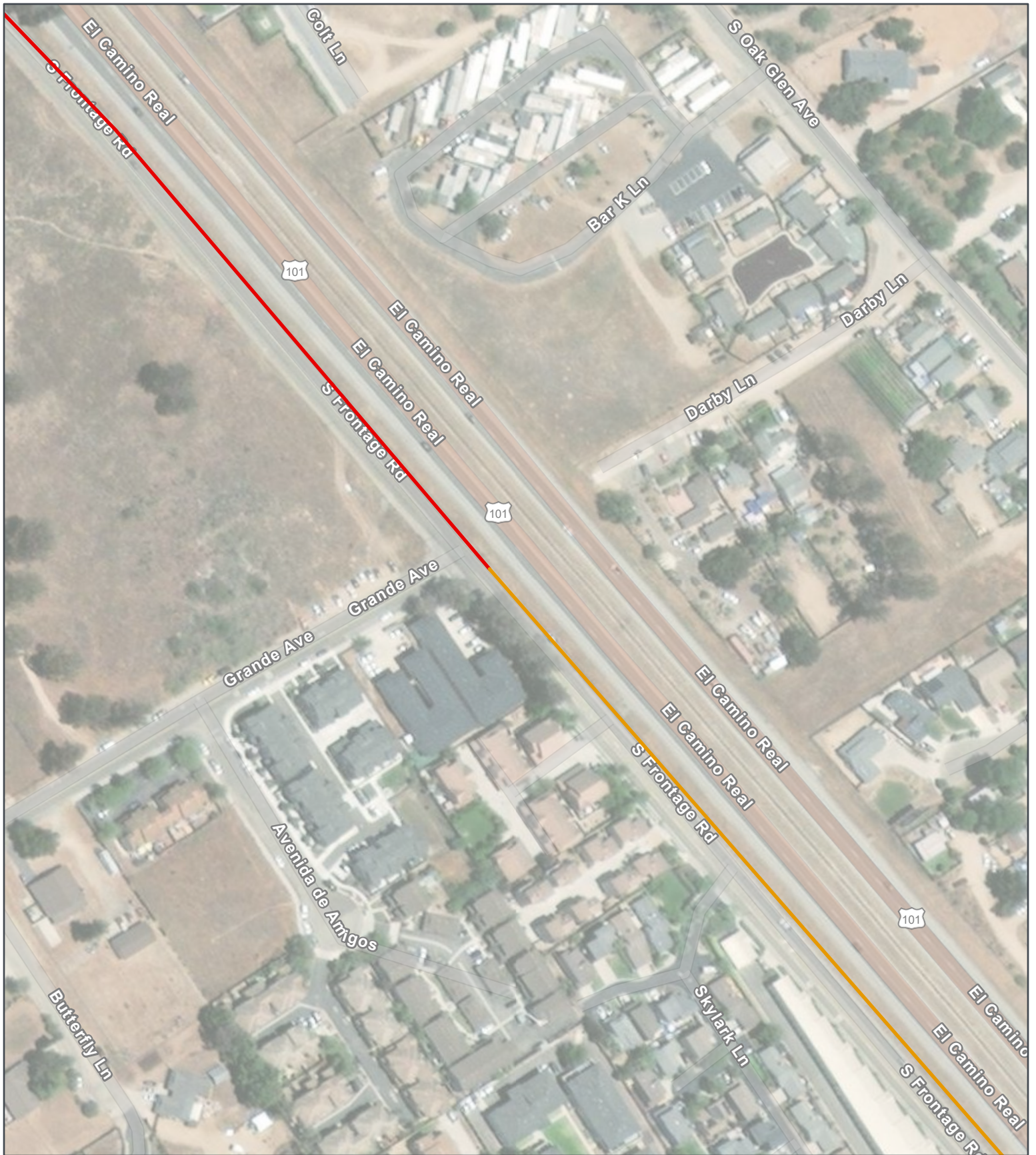
San Luis Obispo County, CA
 NAD 1983 StatePlane California
 V FIPS 0405 Feet
 35.0356°N 120.4844°W

Base Map: ESRI ArcGIS Online,
 accessed April 2022
 Updated: 4/25/2022
 Project No. 64873
 Aprx: 64873_DanaReserve_NCSD
 Layout: NCSD Sewer Improvements



1:2,000





DANA RESERVE
NCSD Sewer Improvements

Page 5 of 8

3 - Sanitary Sewer Replacement

- Replace 10" with 15" Frontage Rd Trunk Sewer
- Replace 12" with 18" Frontage Rd Trunk Sewer

San Luis Obispo County, CA
 NAD 1983 StatePlane California
 V FIPS 0405 Feet
 35.0324°N 120.4802°W



Base Map: ESRI ArcGIS Online,
 accessed April 2022
 Updated: 4/25/2022
 Project No. 64873
 Aprx: 64873_DanaReserve_NCSD
 Layout: NCSD Sewer Improvements



1:2,000





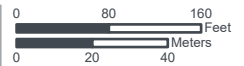
DANA RESERVE
**NCSD Sewer
 Improvements**

Page 6 of 8

- Greater than 18" Frontage Rd Trunk Sewer
- Replace 12" with 18" Frontage Rd Trunk Sewer



San Luis Obispo County, CA
 NAD 1983 StatePlane California
 V FIPS 0405 Feet
 35.0289°N 120.4763°W



Base Map: ESRI ArcGIS Online,
 accessed April 2022
 Updated: 4/25/2022
 Project No. 64873
 Aprx: 64873_DanaReserve_NCSD
 Layout: NCSD Sewer Improvements



1:2,000



DANA RESERVE
**NCSD Sewer
 Improvements**

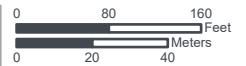
Page 7 of 8



— Greater than 18" Frontage Rd Trunk Sewer

San Luis Obispo County, CA
 NAD 1983 StatePlane California
 V FIPS 0405 Feet
 35.0252°N 120.4724°W

Base Map: ESRI ArcGIS Online,
 accessed April 2022
 Updated: 4/25/2022
 Project No. 64873
 Aprx: 64873_DanaReserve_NCSD
 Layout: NCSD Sewer Improvements



1:2,000





DANA RESERVE
NCSD Sewer Improvements

Page 8 of 8



— Greater than 18" Frontage Rd Trunk Sewer

San Luis Obispo County, CA
 NAD 1983 StatePlane California
 V FIPS 0405 Feet
 35.0221°N 120.4691°W

Base Map: ESRI ArcGIS Online,
 accessed April 2022
 Updated: 4/25/2022
 Project No. 64873
 Aprx: 64873_DanaReserve_NCSD
 Layout: NCSD Sewer Improvements



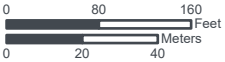
1:2,000





- Dana Reserve Development Water Mains
- Proposed 12" Loop on Willow Rd
- Dana Reserve Specific Plan Area

San Luis Obispo County, CA
 NAD 1983 StatePlane California
 V FIPS 0405 Feet
 35.0521°N 120.5038°W



1:2,000



Base Map: ESRI ArcGIS Online,
 accessed April 2022
 Updated: 4/25/2022
 Project No. 64873
 Aprx: 64873_DanaReserve_NCSD
 Layout: NCSD Water Improvements



DANA RESERVE
**NCSD Water
 Systems
 Improvements**
 Page 2 of 11

- Dana Reserve Development Water Mains
- Proposed 16" on N Oak Glen Ave and Tefft St from Foothill Tanks
- Offsite N. Frontage Road Extension
- Dana Reserve Specific Plan Area

San Luis Obispo County, CA
 NAD 1983 StatePlane California
 V FIPS 0405 Feet
 35.0465°N 120.4928°W



Base Map: ESRI ArcGIS Online,
 accessed April 2022
 Updated: 4/25/2022
 Project No. 64873
 Aprx: 64873_DanaReserve_NCSD
 Layout: NCSD Water Improvements



1:2,000





Proposed 16" on N Oak Glen Ave and Tefft St from Foothill Tanks

San Luis Obispo County, CA
 NAD 1983 StatePlane California
 V FIPS 0405 Feet
 35.0435°N 120.4887°W

Base Map: ESRI ArcGIS Online,
 accessed April 2022
 Updated: 4/25/2022
 Project No. 64873
 Aprx: 64873_DanaReserve_NCSD
 Layout: NCSD Water Improvements



1:2,000





Proposed 16" on N Oak Glen Ave and Tefft St from Foothill Tanks

San Luis Obispo County, CA
 NAD 1983 StatePlane California
 V FIPS 0405 Feet
 35.0397°N 120.4846°W

Base Map: ESRI ArcGIS Online,
 accessed April 2022
 Updated: 4/25/2022
 Project No. 64873
 Aprx: 64873_DanaReserve_NCSD
 Layout: NCSD Water Improvements



1:2,000





Proposed 16" on N Oak Glen Ave and Tefft St from Foothill Tanks

San Luis Obispo County, CA
 NAD 1983 StatePlane California
 V FIPS 0405 Feet
 35.0399°N 120.4803°W




Base Map: ESRI ArcGIS Online,
 accessed April 2022
 Updated: 4/25/2022
 Project No. 64873
 Aprx: 64873_DanaReserve_NCSD
 Layout: NCSD Water Improvements





DANA RESERVE
**NCSD Water
 Systems
 Improvements**
 Page 6 of 11



 Proposed 16" on N Oak Glen Ave and Tefft St from Foothill Tanks

San Luis Obispo County, CA
 NAD 1983 StatePlane California
 V FIPS 0405 Feet
 35.0429°N 120.4765°W




Base Map: ESRI ArcGIS Online,
 accessed April 2022
 Updated: 4/25/2022
 Project No. 64873
 Aprx: 64873_DanaReserve_NCSD
 Layout: NCSD Water Improvements



1:2,000





 Proposed 16" on N Oak Glen Ave and Tefft St from Foothill Tanks

San Luis Obispo County, CA
 NAD 1983 StatePlane California
 V FIPS 0405 Feet
 35.0461°N 120.4724°W




Base Map: ESRI ArcGIS Online,
 accessed April 2022
 Updated: 4/25/2022
 Project No. 64873
 Aprx: 64873_DanaReserve_NCSD
 Layout: NCSD Water Improvements



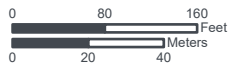
1:2,000





 Proposed 16" on N Oak Glen Ave and Tefft St from Foothill Tanks

San Luis Obispo County, CA
 NAD 1983 StatePlane California
 V FIPS 0405 Feet
 35.0487°N 120.468°W




Base Map: ESRI ArcGIS Online,
 accessed April 2022
 Updated: 4/25/2022
 Project No. 64873
 Aprx: 64873_DanaReserve_NCSD
 Layout: NCSD Water Improvements



1:2,000





 Proposed 16" on N Oak Glen Ave and Tefft St from Foothill Tanks

San Luis Obispo County, CA
 NAD 1983 StatePlane California
 V FIPS 0405 Feet
 35.0511°N 120.4646°W



Base Map: ESRI ArcGIS Online,
 accessed April 2022
 Updated: 4/25/2022
 Project No. 64873
 Aprx: 64873_DanaReserve_NCSD
 Layout: NCSD Water Improvements



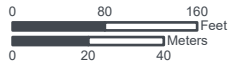
1:2,000





Proposed 16" on N Oak Glen Ave and Tefft St from Foothill Tanks

San Luis Obispo County, CA
 NAD 1983 StatePlane California
 V FIPS 0405 Feet
 35.0539°N 120.461°W



Base Map: ESRI ArcGIS Online,
 accessed April 2022
 Updated: 4/25/2022
 Project No. 64873
 Aprx: 64873_DanaReserve_NCSD
 Layout: NCSD Water Improvements



1:2,000

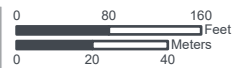




Proposed 16" on N Oak Glen Ave and Tefft St from Foothill Tanks

San Luis Obispo County, CA
 NAD 1983 StatePlane California
 V FIPS 0405 Feet
 35.0559°N 120.4584°W

Base Map: ESRI ArcGIS Online,
 accessed April 2022
 Updated: 4/25/2022
 Project No. 64873
 Aprx: 64873_DanaReserve_NCSD
 Layout: NCSD Water Improvements



1:2,000



