

Environmental Impact Report Scoping Meeting - August 14, 2017



COUNTY OF SAN LUIS OBISPO

Las Pilitas Quarry Conditional Use Permit

Environmental Review

- California Environmental Quality Act (CEQA)
- Required for all discretionary approvals that could result in significant environmental effects
- Purpose: disclose impacts, identify mitigation, consider alternatives



Scoping Meeting

- Required by CEQA for projects of regional significance
- Provides an opportunity for the public and interested parties to comment on the scope and content of an EIR
- Enables the County to reach-out and invite additional public participation in the EIR process
- Identifies potential environmental issues, project alternatives, and evaluation methods to be included in the EIR



Overview of EIR Preparation Process

- Notice of Preparation (July 14, 2017 – August 28, 2017)
- ***Scoping Meeting (August 14, 2017)***
- Draft EIR
- ***Public Review/Comment on Draft EIR – 45 days***
- Final EIR
- ***Planning Commission Hearing***
- ***Board of Supervisors Hearing (if necessary)***
- Certify Final EIR (if project is approved)

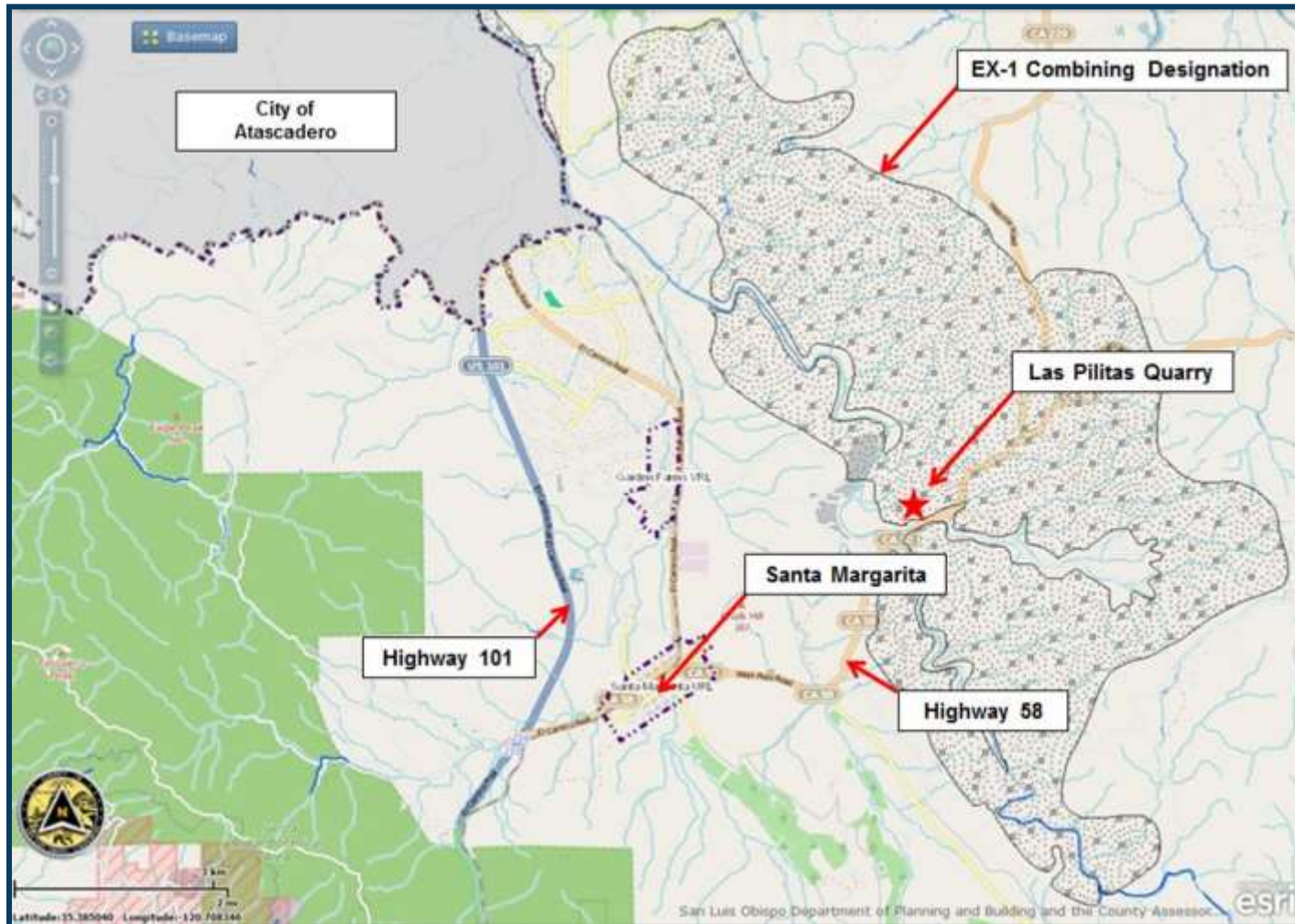


Project Background

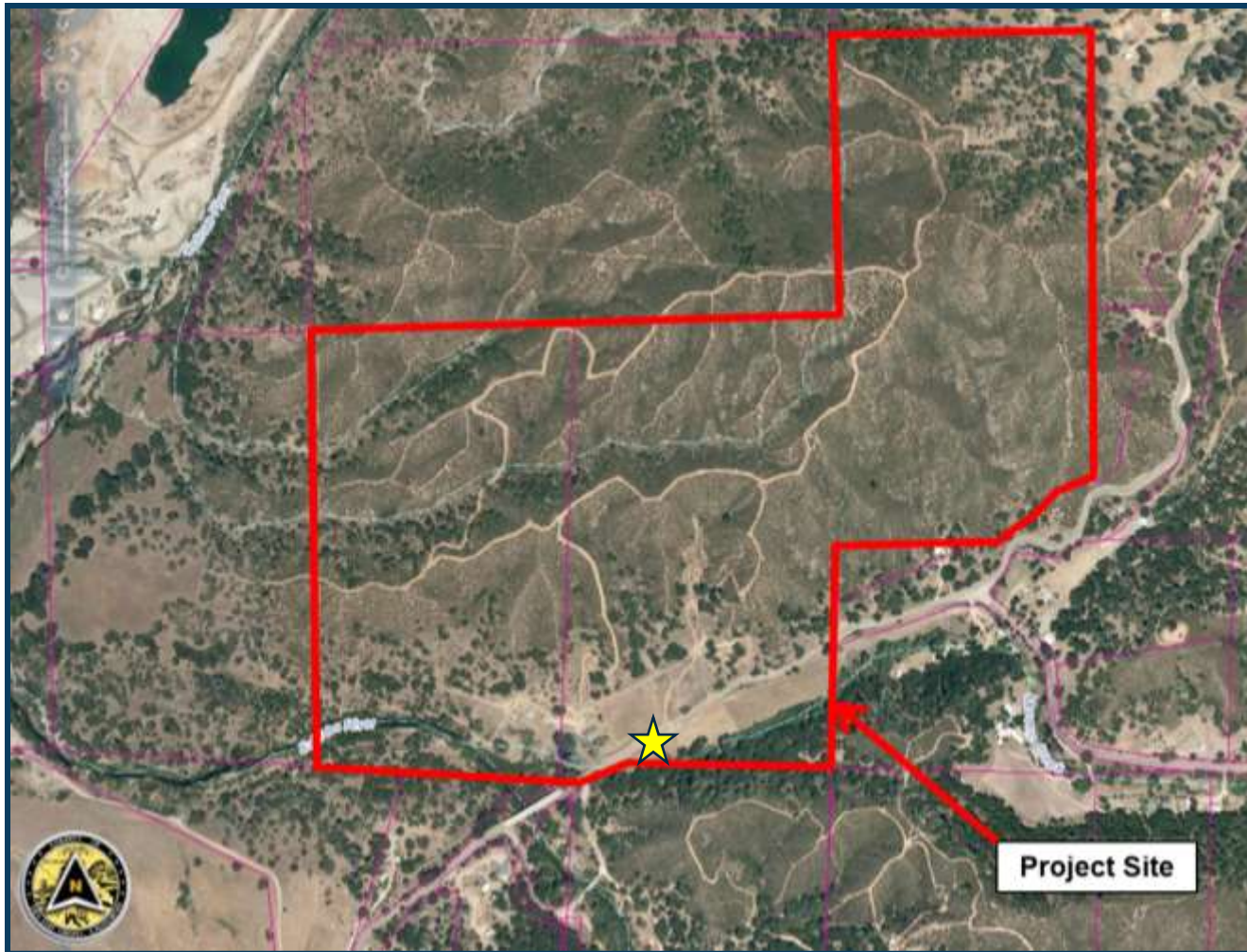
- Previous application (DRC2009-00025) submitted for identical project on same site in October 2009
- Final EIR for previous project was released in November 2014
- On appeal, Board of Supervisors denied previous project without certifying Final EIR
- Applicant submitted Proposed Project in May 2017



Vicinity Map



Project Site



COUNTY
OF SAN LUIS
OBISPO

COUNTY OF SAN LUIS OBISPO

www.slocounty.ca.gov

Project Overview

- Conditional Use Permit and Reclamation Plan for an aggregate quarry and concrete / asphalt recycling facility
- Requesting 25 to 58 year time frame, with a maximum annual extraction rate of 500,000 tons
- Project will result in 41 acres of site disturbance on a 234 acre property
- Evaluate a Reduced Project Alternative



Project Overview

| Project Feature | Proposed Project | Reduced Project Alternative |
|--------------------------------|----------------------------------|---|
| Maximum Annual Extraction Rate | 500,000 tons | 250,000 tons |
| Recycling | Yes | No |
| Avg. Truck Trips | 136 | 50 |
| Max. Truck Trips | 400 | 135 |
| Truck Route | Unrestricted / 80 % through town | Restricted from accessing site through town |
| Blasting | 20 times / year | 12 times / year |



Project Description - Initial Stage

- Install truck scale, portable office, access road, landscaping
- Remove and stockpile overburden for reclamation use and excavating
- Process and stockpile DG and granite rock starting towards the center of the site, extending north and northeast
- Processing will be done by portable crushing and screening equipment
- About a 5 year timeframe



Project Description – Follow-up Stage

- Continued mining and processing of DG and granitic rock
- Begin recycling (crushing and stockpiling) of concrete and asphalt for public sale
- Reclamation would begin in this phase as the upper benches of the mine are excavated

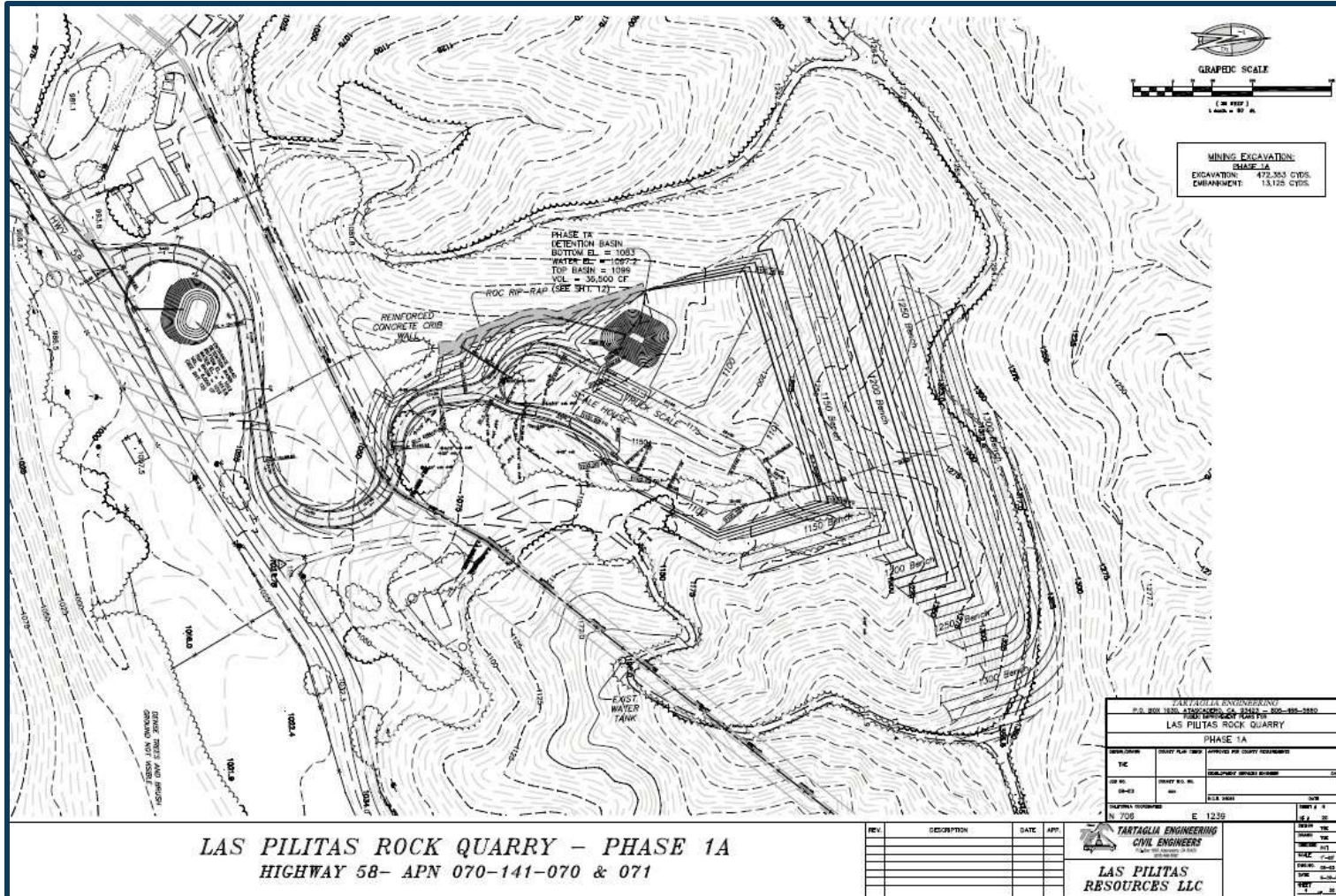


Project Description - Operational Details

- Begins with clearing of vegetation and topsoil from the area of excavation
- Aggregate material will be removed by a wheel loader, hydraulic excavator and/or bulldozer for sorting then stockpiled for sale
- If aggregate is too consolidated to be ripped, it will be loosened by blasting
- Trucks would proceed to scale for weighing and ticketing



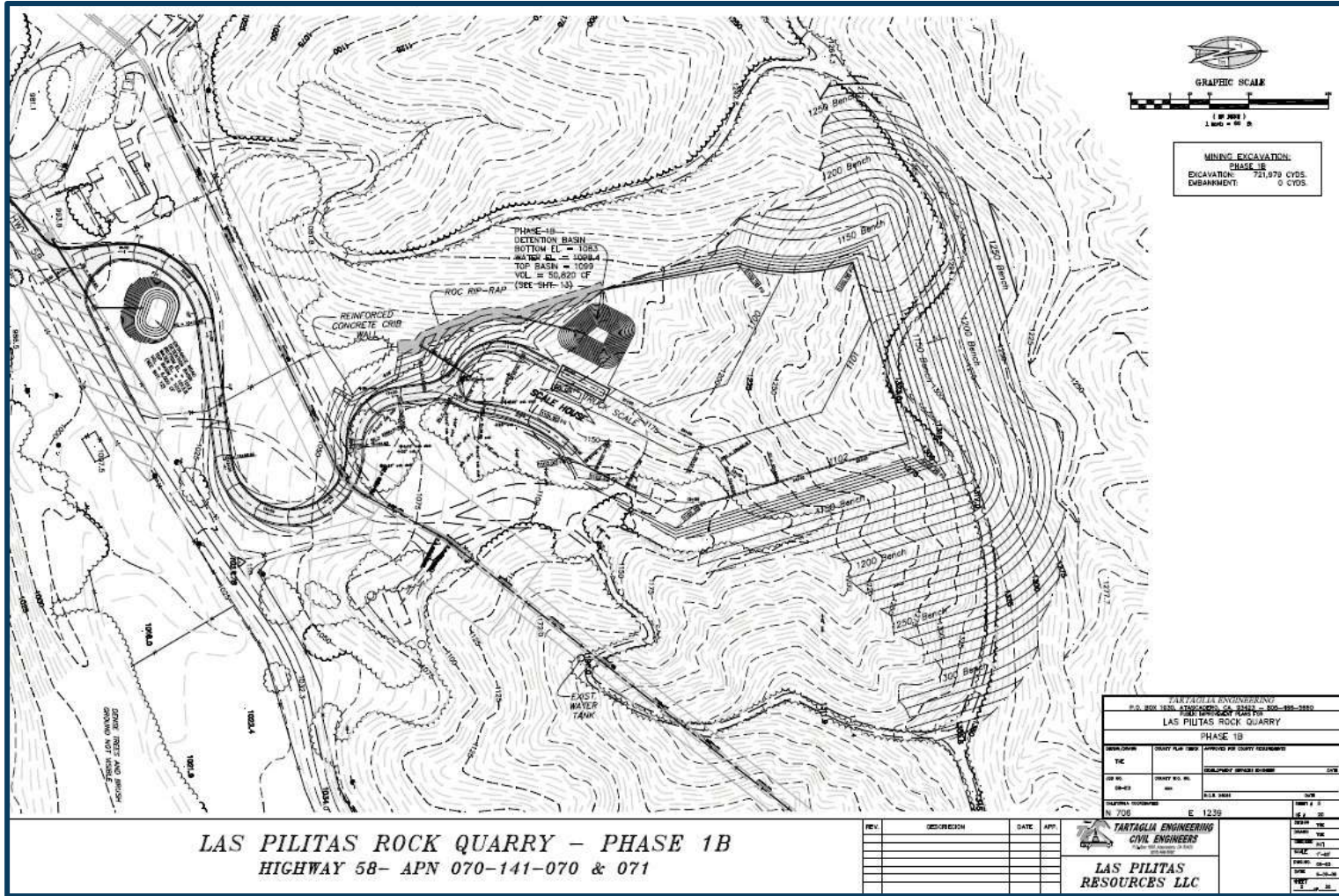
Project Description - Phase 1A



COUNTY OF SAN LUIS OBISPO

www.slocounty.ca.gov

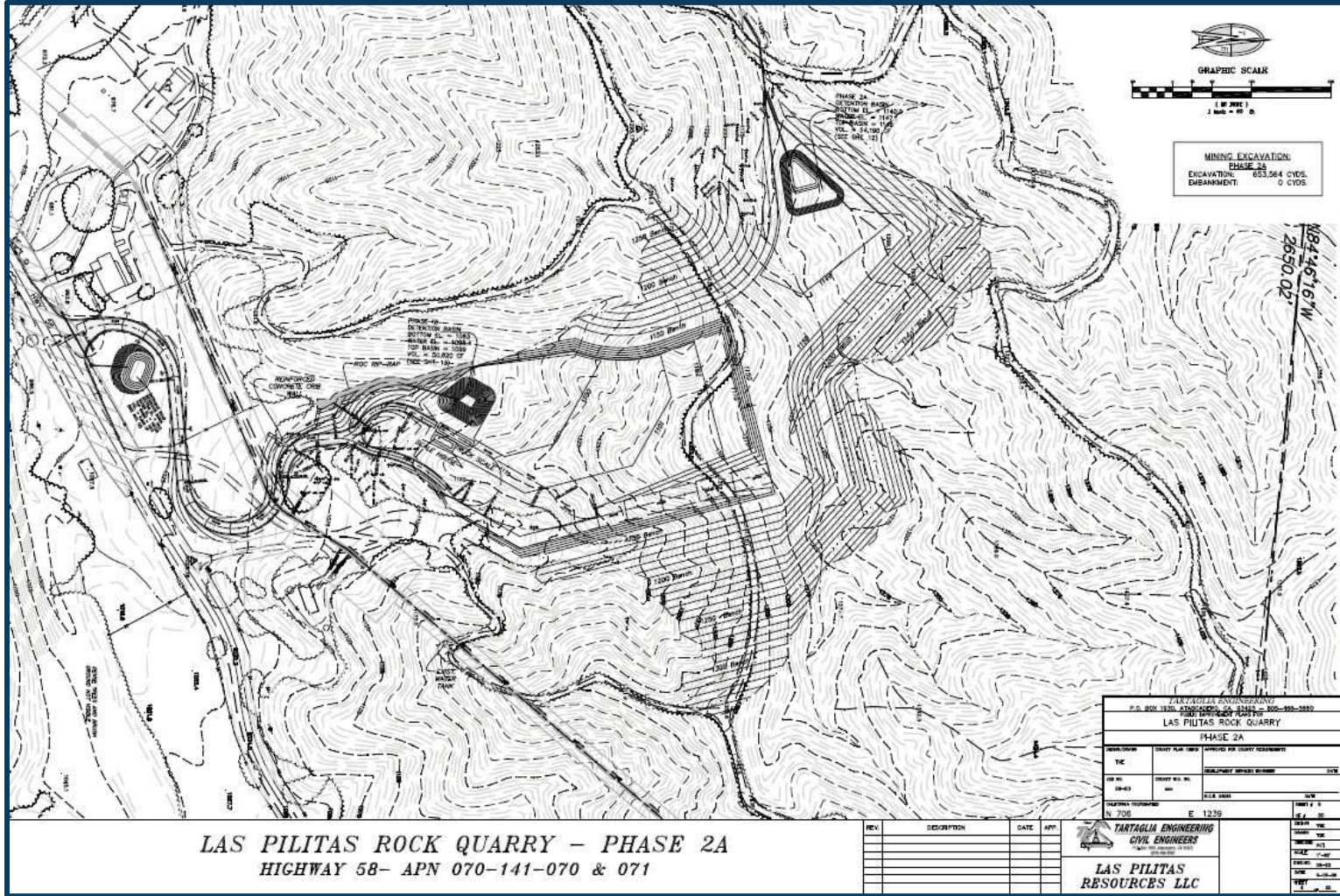
Project Description - Phase 1B



LAS PILITAS ROCK QUARRY - PHASE 1B
 HIGHWAY 58- APN 070-141-070 & 071



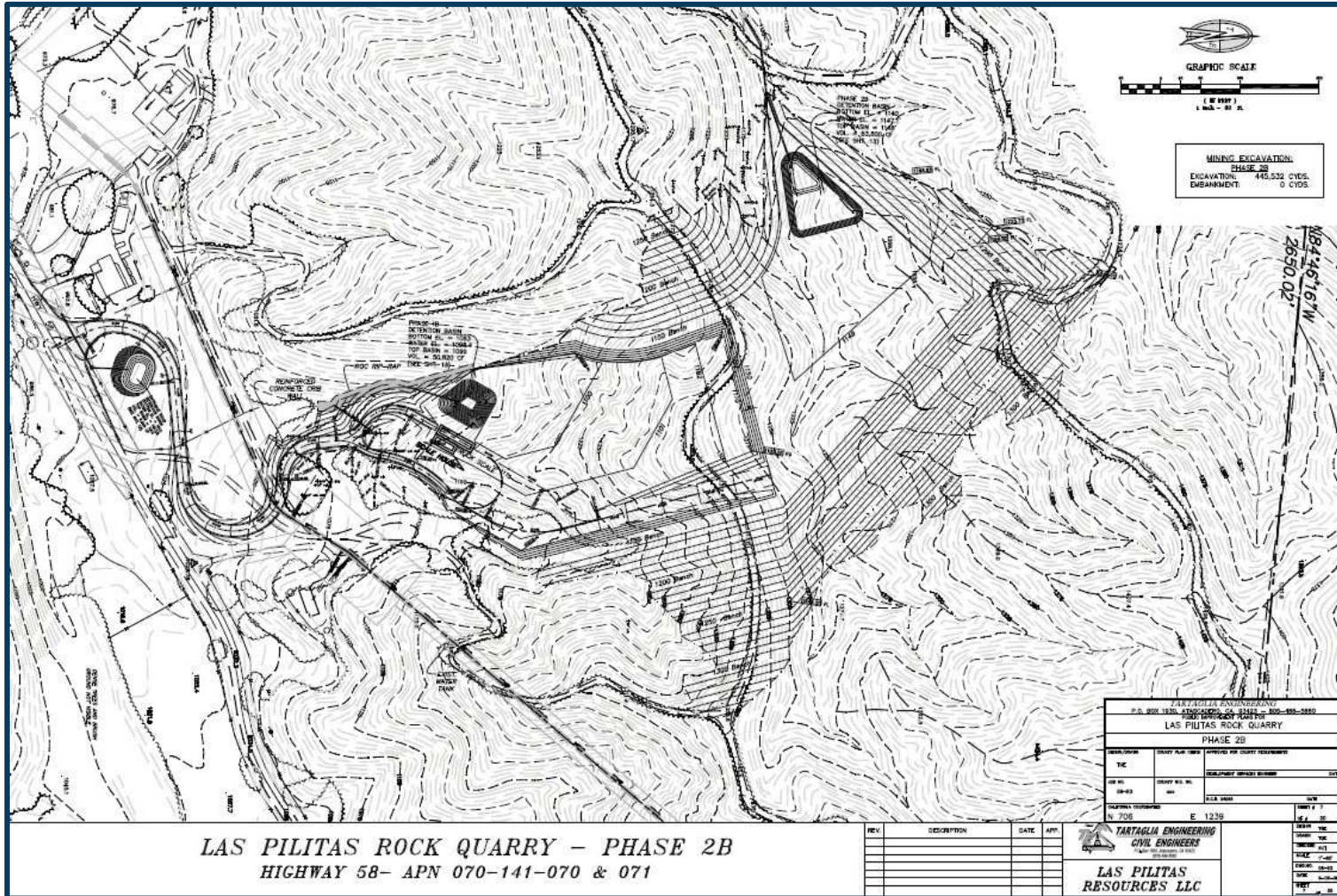
Project Description - Phase 2A



LAS PILITAS ROCK QUARRY - PHASE 2A
 HIGHWAY 58- APN 070-141-070 & 071



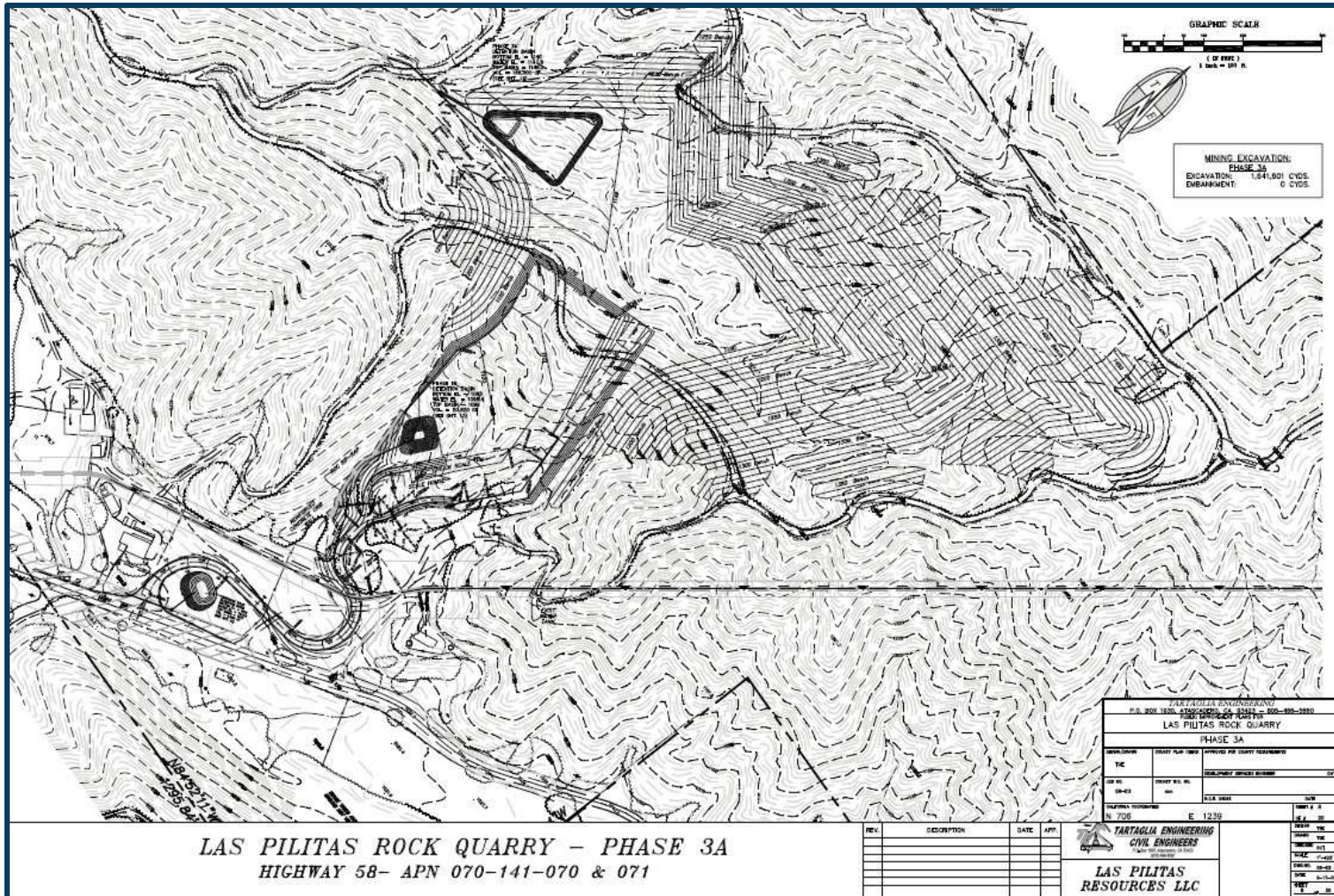
Project Description - Phase 2B



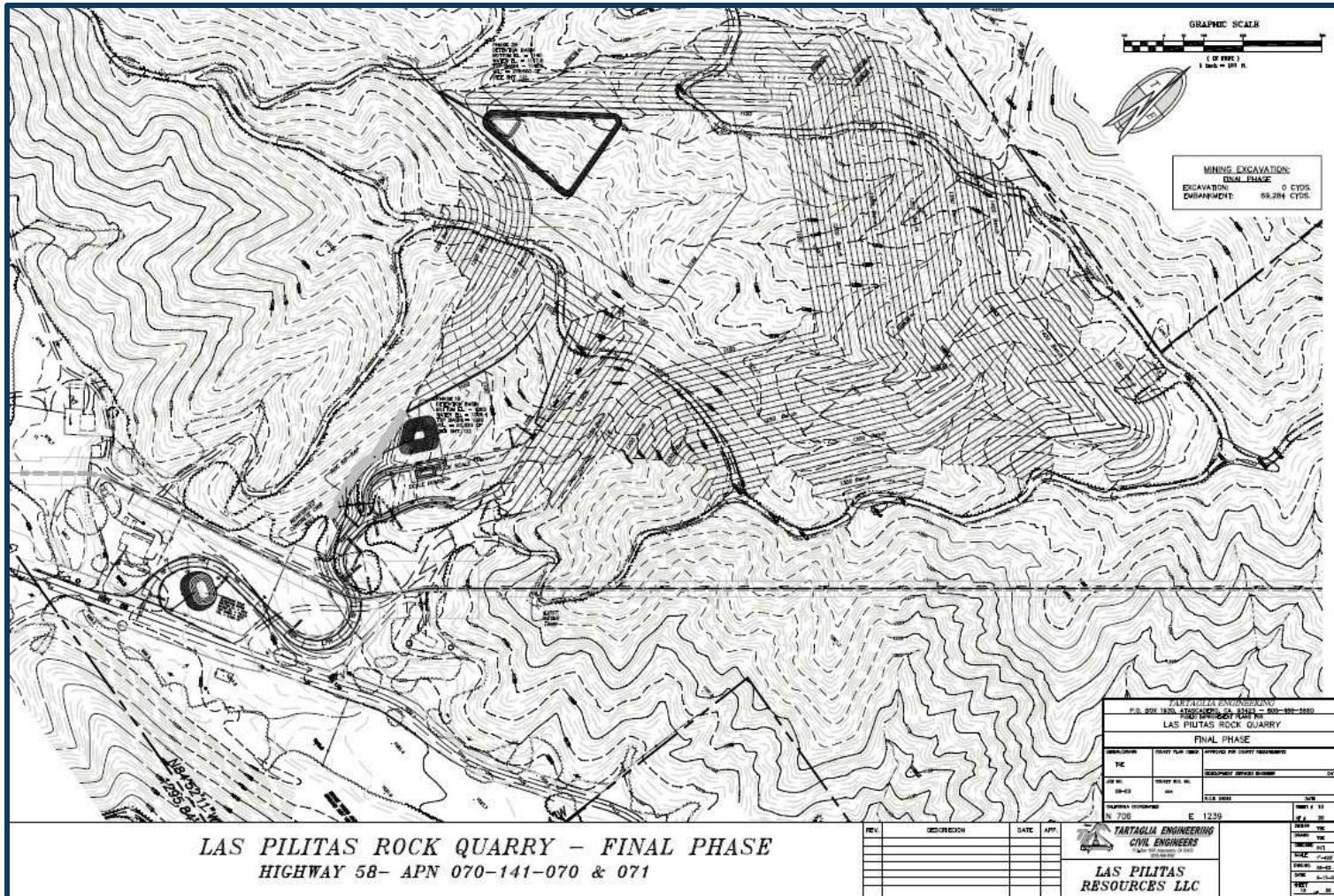
LAS PILITAS ROCK QUARRY - PHASE 2B
 HIGHWAY 58- APN 070-141-070 & 071



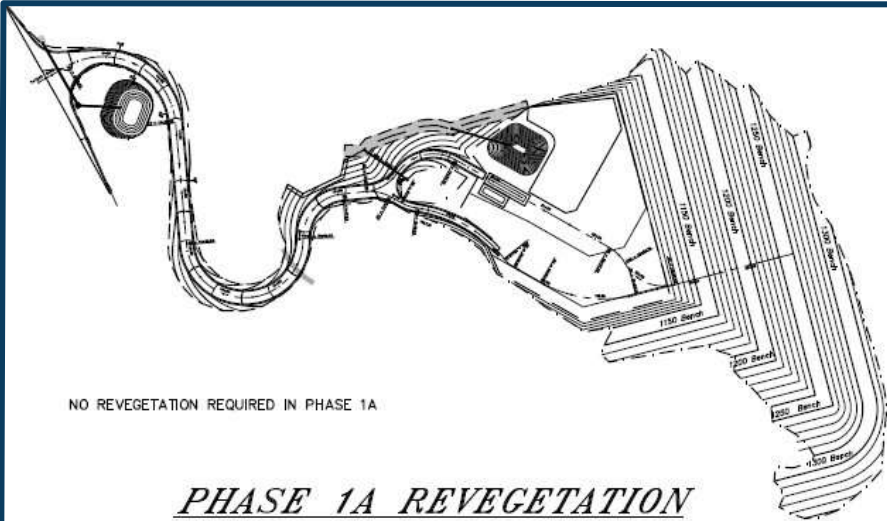
Project Description - Phase 3A



Project Description - Final Phase

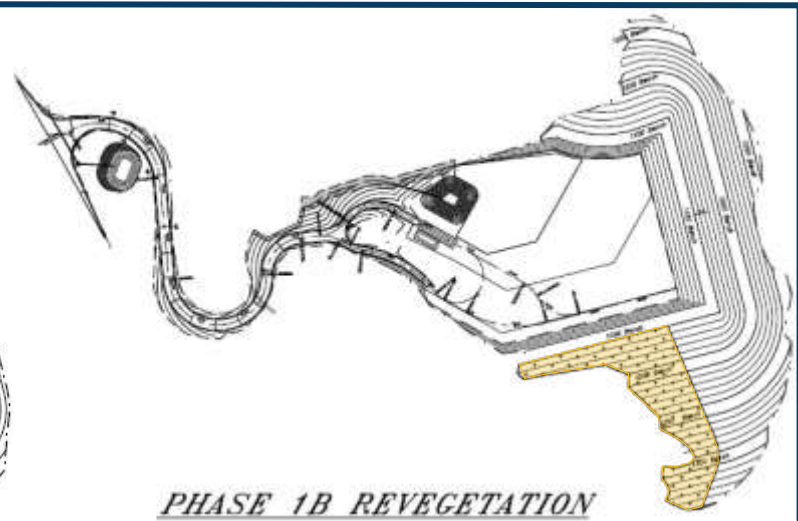


LAS PILITAS ROCK QUARRY - FINAL PHASE
 HIGHWAY 58- APN 070-141-070 & 071

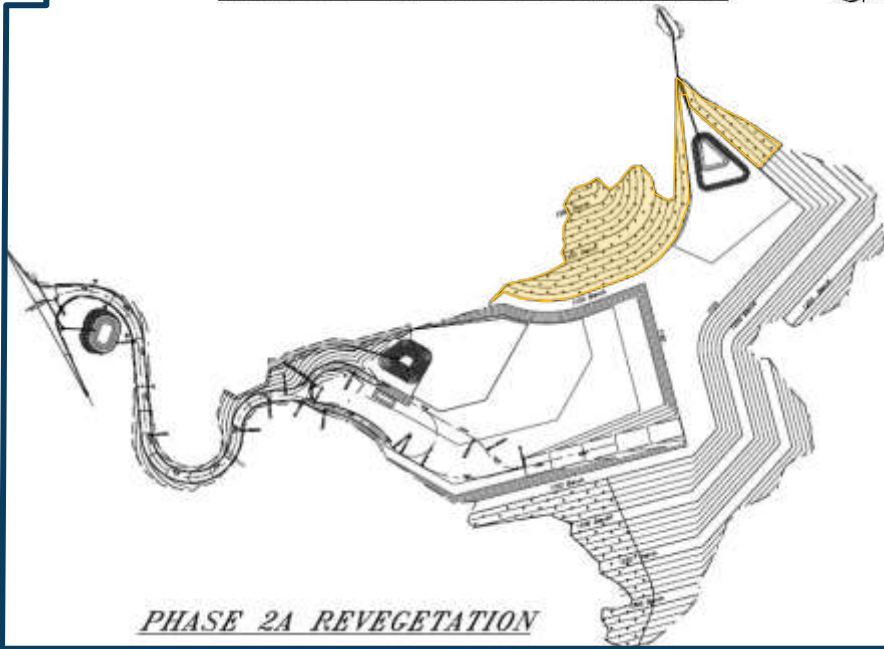


NO REVEGETATION REQUIRED IN PHASE 1A

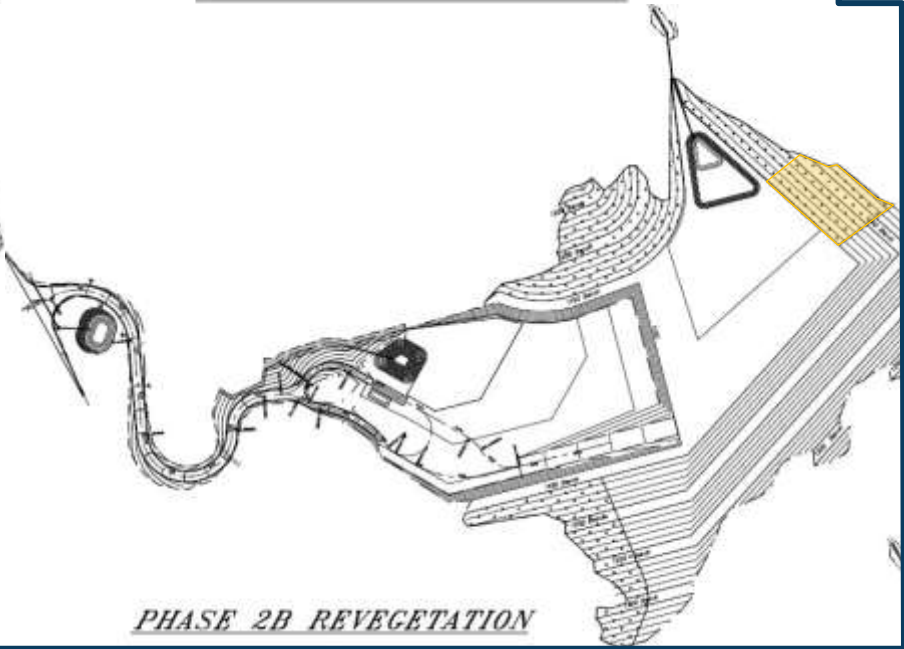
PHASE 1A REVEGETATION



PHASE 1B REVEGETATION

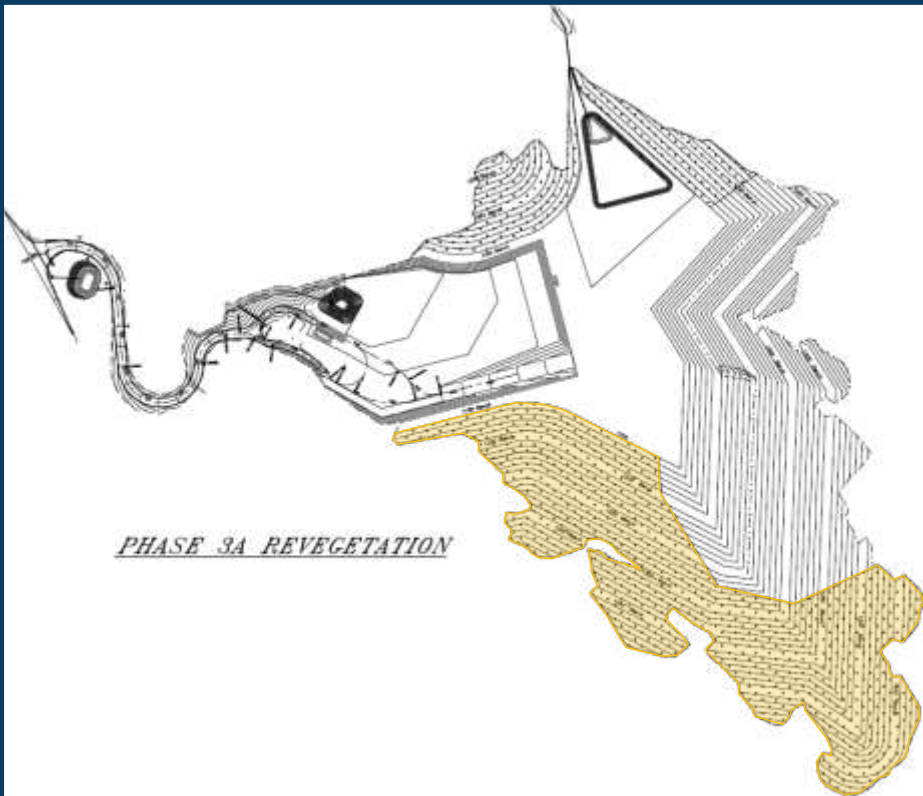


PHASE 2A REVEGETATION

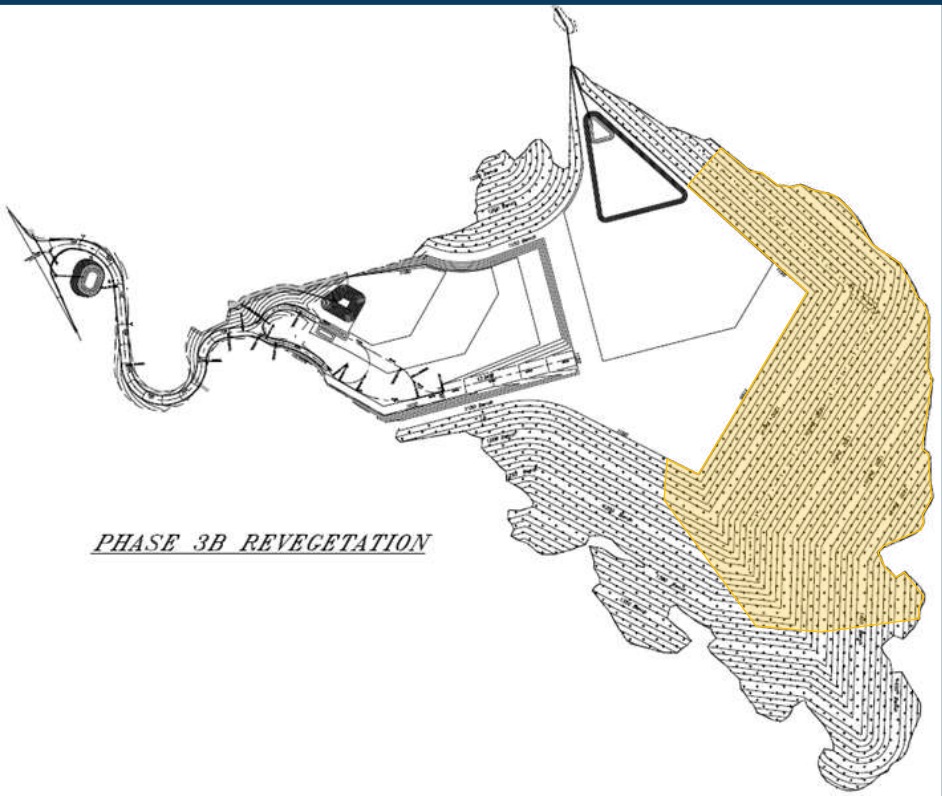


PHASE 2B REVEGETATION



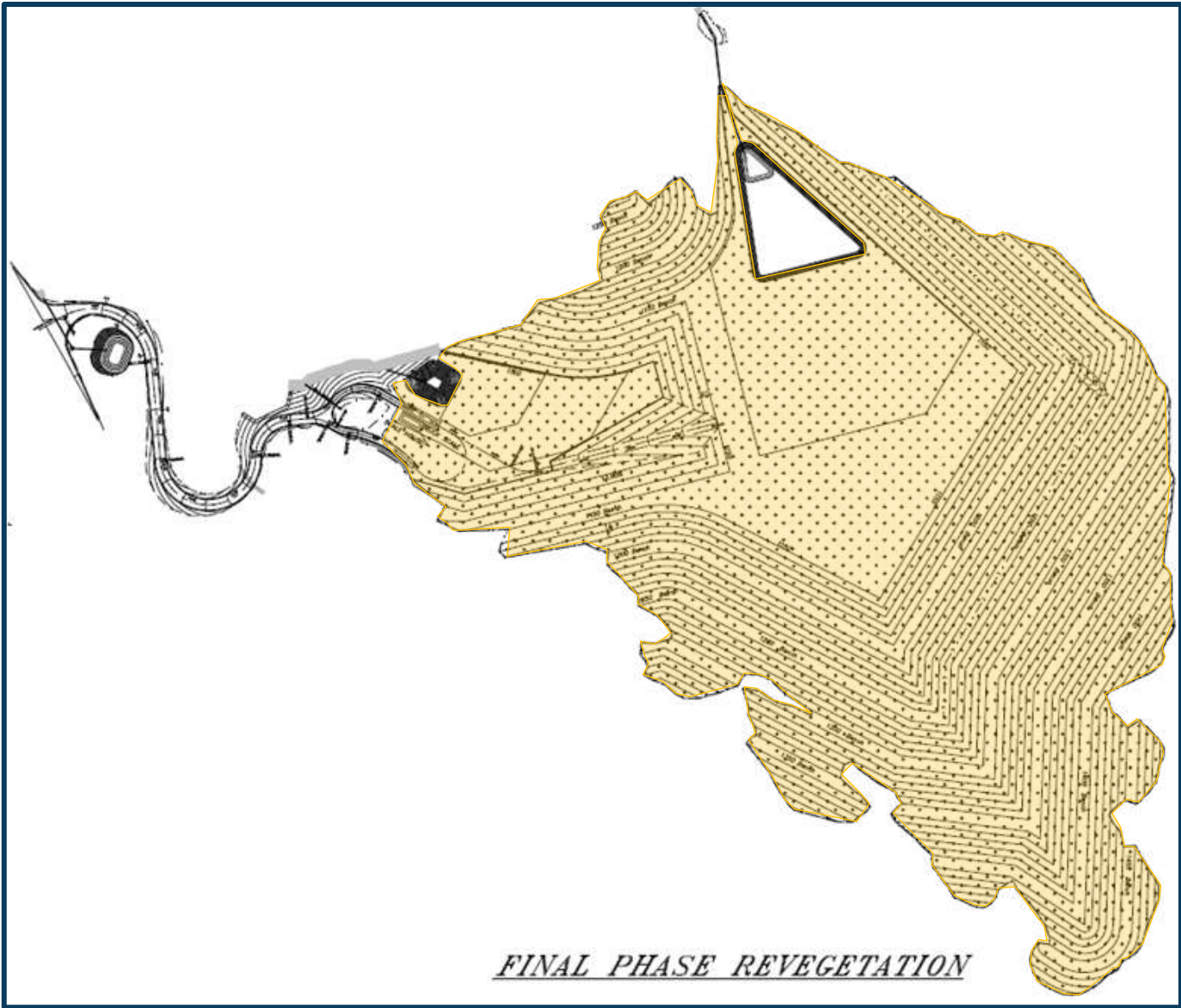


PHASE 3A REVEGETATION



PHASE 3B REVEGETATION





Site Photos – Proposed Driveway



Site Photo - Mining Area



COUNTY OF SAN LUIS OBISPO

www.slocounty.ca.gov

Site Photo - Highway 58 from Site



COUNTY OF SAN LUIS OBISPO

www.slocounty.ca.gov

Key Environmental Issues (2014 EIR)

- Visual impacts from Highway 58
- Contribution to cumulative traffic impacts on Highway 58
- Truck traffic noise affecting homes in Santa Margarita
- Operational and blasting noise affecting nearby homes



Other Environmental Issues

- Air Quality – diesel emissions and operational dust
- Biological – impacts to sensitive habitats and plants/wildlife
- Water Quality – drainage, erosion, and sedimentation
- Transportation – driveway sight distance, safety concerns



Scope of Work for Revised EIR

- Evaluate Reduced Project Alternative
- Revise to comply with changes to CEQA Guidelines and Statutes, including AB 52 and SB 743
- Update environmental setting and impact analysis to reflect current baseline conditions



Scope of Work for Revised EIR (Cont'd)

- Prepare new traffic study based on recent trip counts and current market assumptions
- Update traffic, air quality, GHG, and noise sections to reflect revised traffic study
- Update other sections as recommended by consultant or in response to EIR scoping and NOP comments



Useful Comments

- Did the 2014 EIR adequately identify and evaluate the project's significant environmental effects?
- Are there new environmental or regulatory conditions that would change the analysis in the 2014 EIR?
- Are there any new feasible mitigation measures that were not included in the 2014 EIR?
- Are there other feasible alternatives that should be considered?
- Are there other EIR sections that should receive special focus?



Contact Information

County Project Manager: Airlin Singewald
(805) 781-5198 or asingewald@co.slo.ca.us

Comments Due on August 28, 2017

