

Oak Woodland Ordinance Community Meeting



COUNTY OF SAN LUIS OBISPO

June 21, 2017

Overview of Meeting

- Applicability
- Key Definitions
- Prohibitions
- Exemptions
- Heritage Oaks
- Oak Woodland Management Plans
- Examples



Applicability

- Inland portions of unincorporated areas of San Luis Obispo County
- Outside Urban and Village areas
- Oak woodlands and Heritage Oaks



Oak Woodland Definition

A grouping of trees **over one acre** in area growing in a **contiguous pattern** and on a site of sufficiently uniform quality that is distinguishable as a unit, including **any Stand within 500 feet**; where the dominant trees are one or more of the following species: Blue oak (*Quercus douglasii*), Coast live oak (*Quercus agrifolia*), Interior live oak (*Quercus wislizeni*), Valley oak (*Quercus lobata*), and California black oak (*Quercus kelloggii*).



Other Key Definitions

- Clear-cut: The removal of contiguous trees that occupy an area of **one acre or more** within an Oak Woodland from a Site or a portion of a Site for any reason.
- Stand: An individual oak tree or grouping of contiguous oak trees that **occupy less than one acre** of area where the dominant trees are that of an Oak Woodland, **separated by more than 500 feet** from the nearest Oak Woodland.
- Site: Any lot or parcel of land or contiguous combination thereof, **under the same ownership**.



Prohibitions

- Clear-cutting of Oak Woodlands on slopes of 30% or greater



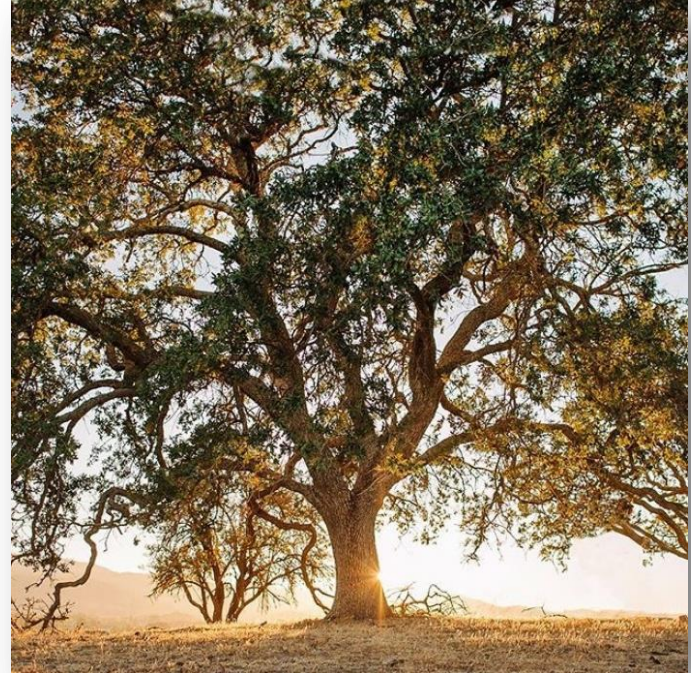
Exemptions

- Preemption and Emergency
- Residential development
- Public utility work
- Conservation easement
- Establishing a fence line
- Creation of a fire break
- Oak Woodland Management Plans



Heritage Oaks

- Heritage Oaks: Any individual oak species, as defined by this ordinance, of **48 inches diameter at breast height (dbh)** or greater, separated from all Stands and Oak Woodlands by at least 500 feet.
- Minor Use Permit is required for removal



<http://www.visitsanluisobispocounty.com/blog/911/epic-sunsets-and-where-to-find-them-in-slo-county>



Permitted Removal

- Less than 1 acre: No permit required
- 1 to 3 acres cumulatively over a ten year period
 - Minor Use Permit
- 3 or more acres cumulatively over a ten year period
 - Conditional Use Permit



Oak Woodland Management Plans

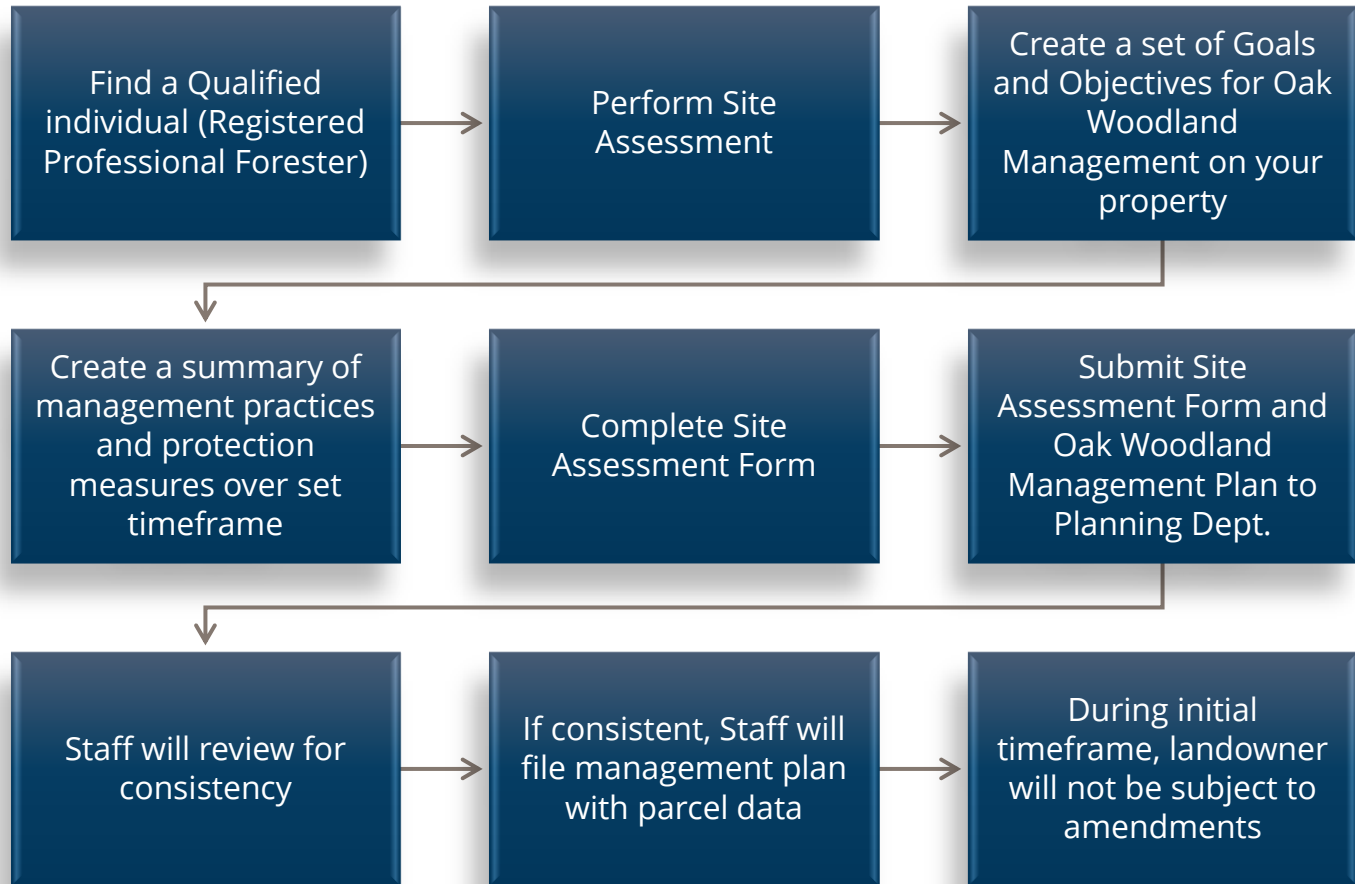
Guidelines

- Oak Woodland Management Plans should be prepared by a qualified individual acceptable to the Director of Planning and Building.
- Minimum Components
 - Site Location
 - Objectives
 - Timeframe
 - Conservation Easement



Oak Woodland Management Plans

Process

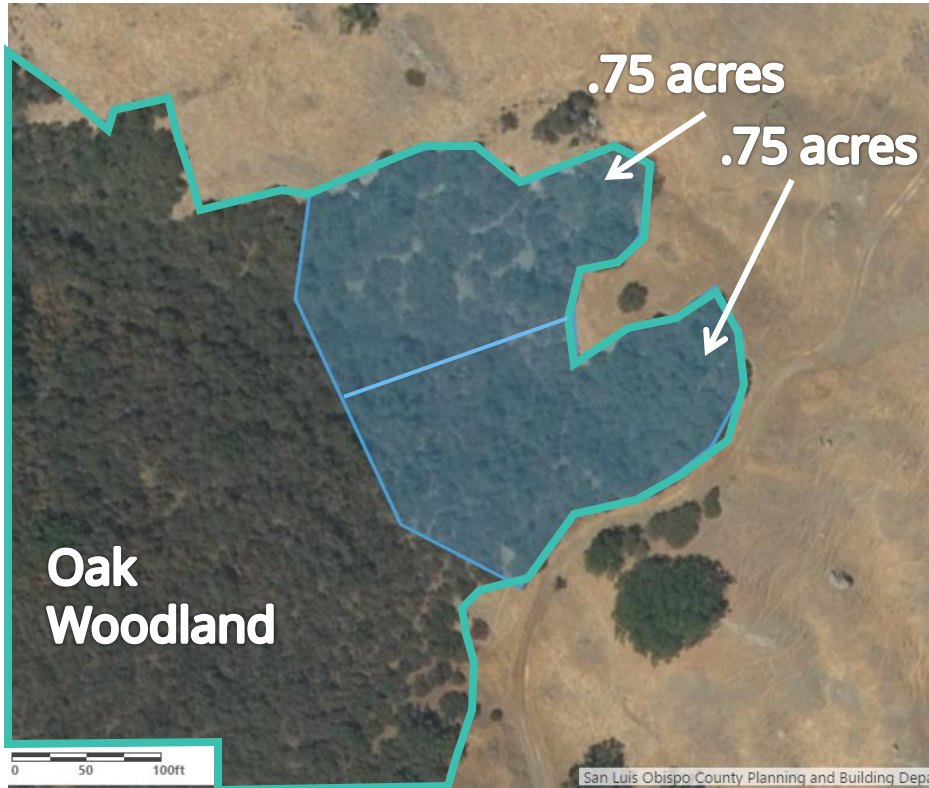


Example #1: Exemption



- Part of an Oak Woodland
- Less than 1 acre of tree removal
- Exempt from ordinance

Example #2: Minor Use Permit



- Part of an Oak Woodland
- Clear-cutting between 1-3 acres over a period of 10 years
- Minor Use Permit required



Questions?



COUNTY OF SAN LUIS OBISPO

www.slocounty.ca.gov