

Cross Section	Distance from Dam (mi)	Station	Initial Wave Arrival Time, 1 Foot (hh:mm)	Time to Peak (hh:mm)	Peak Inundation Depth (ft)	Peak Velocity (fps)	Peak Discharge (cfs)	Peak Water Elevation (ft)	Location Description
-	-	-	-	-	-	-	25,391	-	At Terminal Dam
1	0.2	10+49	0:06	0:23	18.3	12.6	24,941	285	Downstream of Lopez Reservoir
2	1.6	83+22	0:20	0:34	15.5	8.8	23,473	228	Cecchetti Road
3	2.5	131+49	0:33	0:50	33.1	10.7	15,177	200	Upstream of Huasna Road
4	2.9	153+20	0:42	1:00	18.7	5.6	13,299	155	Downstream of Tar Spring Creek
5	3.4	179+82	0:58	1:16	23.7	11.2	10,644	139	
6	4.8	255+54	1:12	1:37	23.0	6.0	9,279	102	Traffic Way
7	6.1	320+24	1:20	1:39	19.6	4.9	9,067	96	US 101 Highway
8	6.8	359+57	1:32	1:52	20.6	6.3	8,358	80	Fair Oaks Avenue
9	7.7	406+81	1:55	2:21	11.4	4.5	7,178	53	Cabrillo Highway (Hwy 1)
10	8.7	460+77	2:20	2:57	8.0	3.5	3,219	31	Railroad Bridge downstream of 22nd Street
11	8.9	467+83	2:55	3:48	6.2	2.1	1,119	14	Outlet of Arroyo Grande Creek into Ocean

Notes:

- This map is part of the emergency action plan for Terminal Dam.
- The inundation map meets all applicable state and federal standards and has been prepared in consideration of all potential downstream hazards by a licensed civil engineer.
- The results presented herein do not reflect the structural integrity of the dam and are not a statement of the dam's safety. The analysis presented is based on a hypothetical dam failure using 2D modeling software with a 100' grid.
- Cross Section Values: Distance from Dam and Stationing are reckoned from the centerline of Terminal Dam along the displayed Flow Path. Distance from Dam is in miles and Stationing is in feet (Stationing 12+34 = 1,234).
Initial Wave Arrival Time, 1 Foot is the time to achieve 1 foot of water depth after initiation of the dam break.
Time to Peak is the time to achieve the maximum water depth after initiation of the dam break.
Deflood Time, 1 Foot is the time elapsed from the flood wave arrival time until water recedes to within one foot of its pre-flood water elevation.
Peak Inundation Depth is the maximum water depth.
Peak Velocity is the maximum velocity.
Peak Discharge is an estimate of the maximum flow rate integrated over the entire cross section line.
Peak Water Elevation is the maximum water surface elevation.
Time Above 1 Foot is the time water depth is above 1 foot.
Location Description indicates major roads that cross, or are near, the Flow Path at that cross section.
- The values displayed in the table for each cross section are the maximum for that parameter along each cross section line, except for the Initial Wave Arrival Time, 1 Foot and Time to Peak which are the minimum for that parameter along each cross section line. The minimum time values associated with 1D channels embedded in the 2D model are excluded.
- For other details refer to the supporting report "Terminal Dam Failure and Inundation Study" 31 December 2017.
- Map projection: California State Plane, Zone 5, Feet, North American Datum 1983. Reference Points and border ticks display these coordinate values. All elevations are referenced to North American Vertical Datum 1988.



COUNTY OF SAN LUIS OBISPO

Flow Path
Cross Section
Detailed Sheet Extent
Approx. Inundation Extent
Approx. Limits of Fair Weather Spillway-Failure Inundation

Scale 1:36,000

0 3,000 6,000 Feet

NOTICE
San Luis Obispo County deems this information to be Confidential. Do not share the information unless prior approval is obtained from SLO County's Dam Safety Officer at (805) 781-5252.

Inundation Depth Map for Fair Weather Hypothetical Failure of Terminal Dam

Federal Dam ID: CA00888 State Dam ID: 1055.002

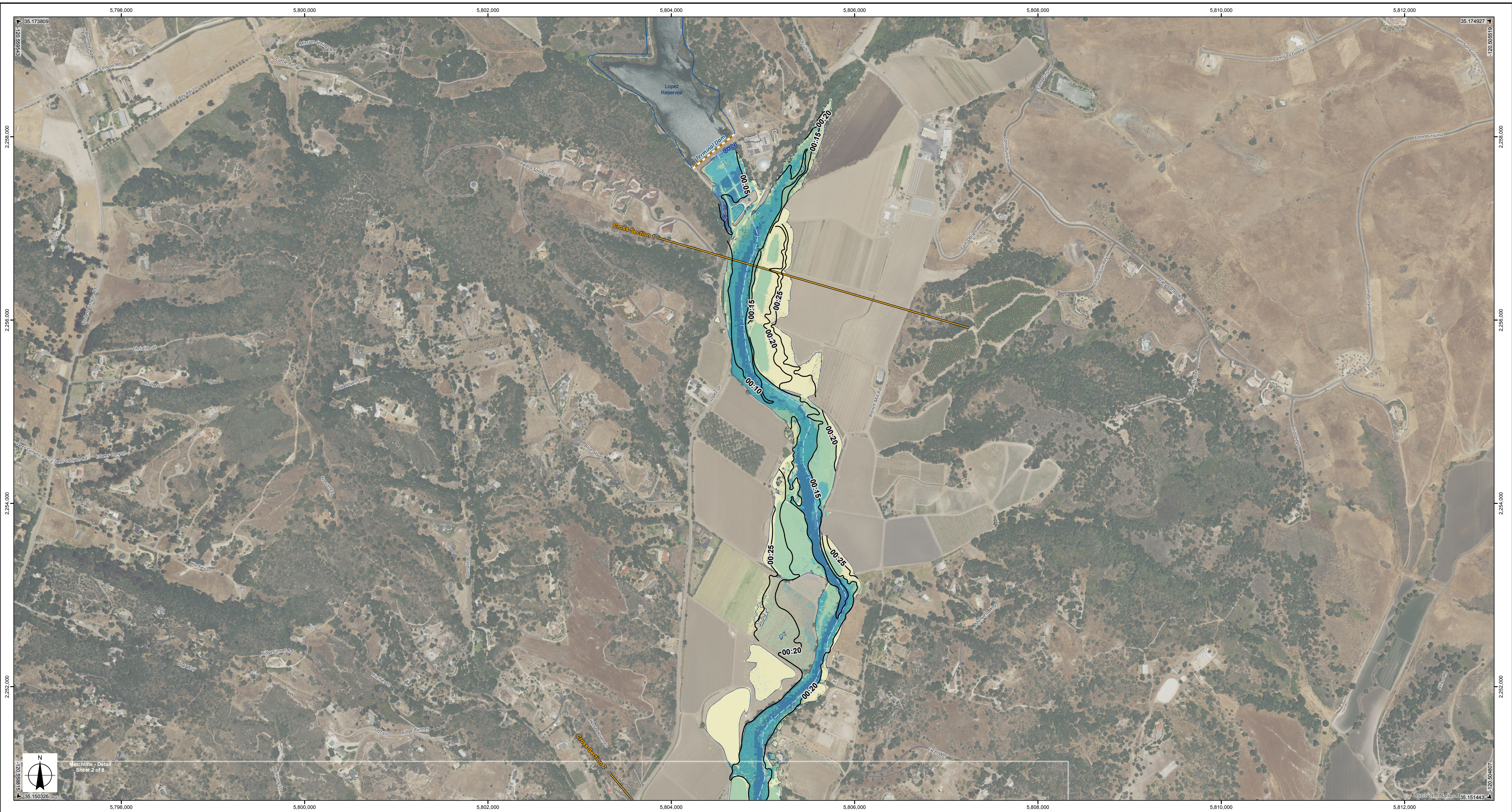
Overview Sheet

San Luis Obispo County
© 2017 San Luis Obispo County

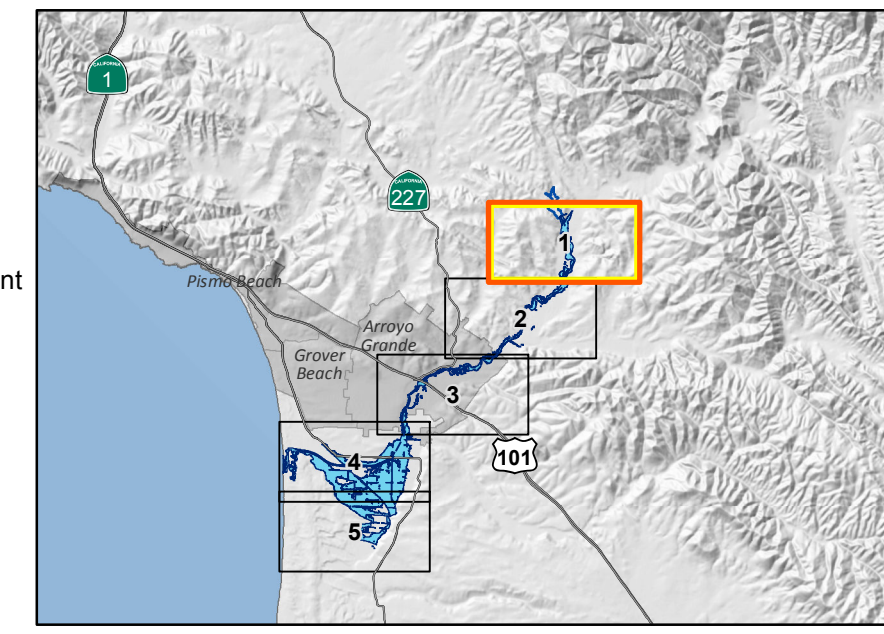
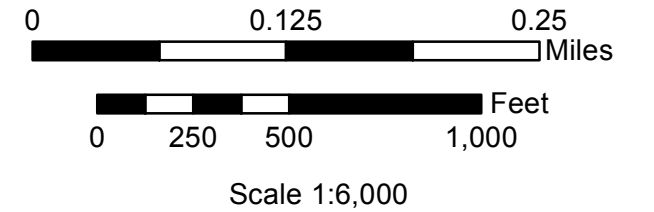
Model Date	Map Date	Description	Prepared By	Accepted By
12/24/2017	02/18/2019	FINAL	GEI Consultants	DSOD

Dam Owner: San Luis Obispo County Flood Control and Water Conservation District
County Government Center, Room 206
San Luis Obispo, CA 93408
Information Contact: John Diodati, (805) 781-5252
Emergency Contact: (805) 781-5252

Inundation Analysis Performed by and Inundation Maps Created by: GEI Consultants, Inc.
Mark Fortner, PE #8266



Cross Section	Distance from Dam (mi)	Station	Initial Wave Arrival Time, 1 Foot (hh:mm)	Time to Peak (hh:mm)	Peak Inundation Depth (ft)	Peak Velocity (fps)	Peak Discharge (cfs)	Peak Water Elevation (ft)	Location Description
-	-	-	-	-	-	-	25,391	-	At Terminal Dam
1	0.2	10+69	0:06	0:23	18.3	12.6	24,941	285	Downstream of Lopez Reservoir
2	1.6	83+22	0:20	0:34	15.5	8.8	23,473	228	Cecchetti Road



DO NOT DISTRIBUTE THIS MAP OR THE ASSOCIATED MODEL INFORMATION WITHOUT PRIOR NOTIFICATION TO THE FEDERAL DAM OWNER

NOTICE

San Luis Obispo County deems this information to be Confidential. Do not share the information unless prior approval is obtained from SLO County's Dam Safety Officer at (805) 781-5252.

Inundation Depth Map for Fair Weather Hypothetical Failure of Terminal Dam
Flood Depth and Arrival Time
 Federal Dam ID: CA00888 State Dam ID: 1055.002
Detail Sheet 1 of 5
 San Luis Obispo County
 © 2017 San Luis Obispo County

Model Date	Map Date	Description	Prepared By	Accepted By
12/24/2017	02/18/2019	FINAL	GEI Consultants	DSOD

Dam Owner: San Luis Obispo County Flood Control and Water Conservation District
 County Government Center, Room 206
 San Luis Obispo, CA 93408
 Information Contact: John Diodati, (805) 781-5252
Emergency Contact: (805) 781-5252
 Inundation Analysis Performed by and Inundation Maps Created by: GEI Consultants, Inc.
 Mark Fortner, PE 48266

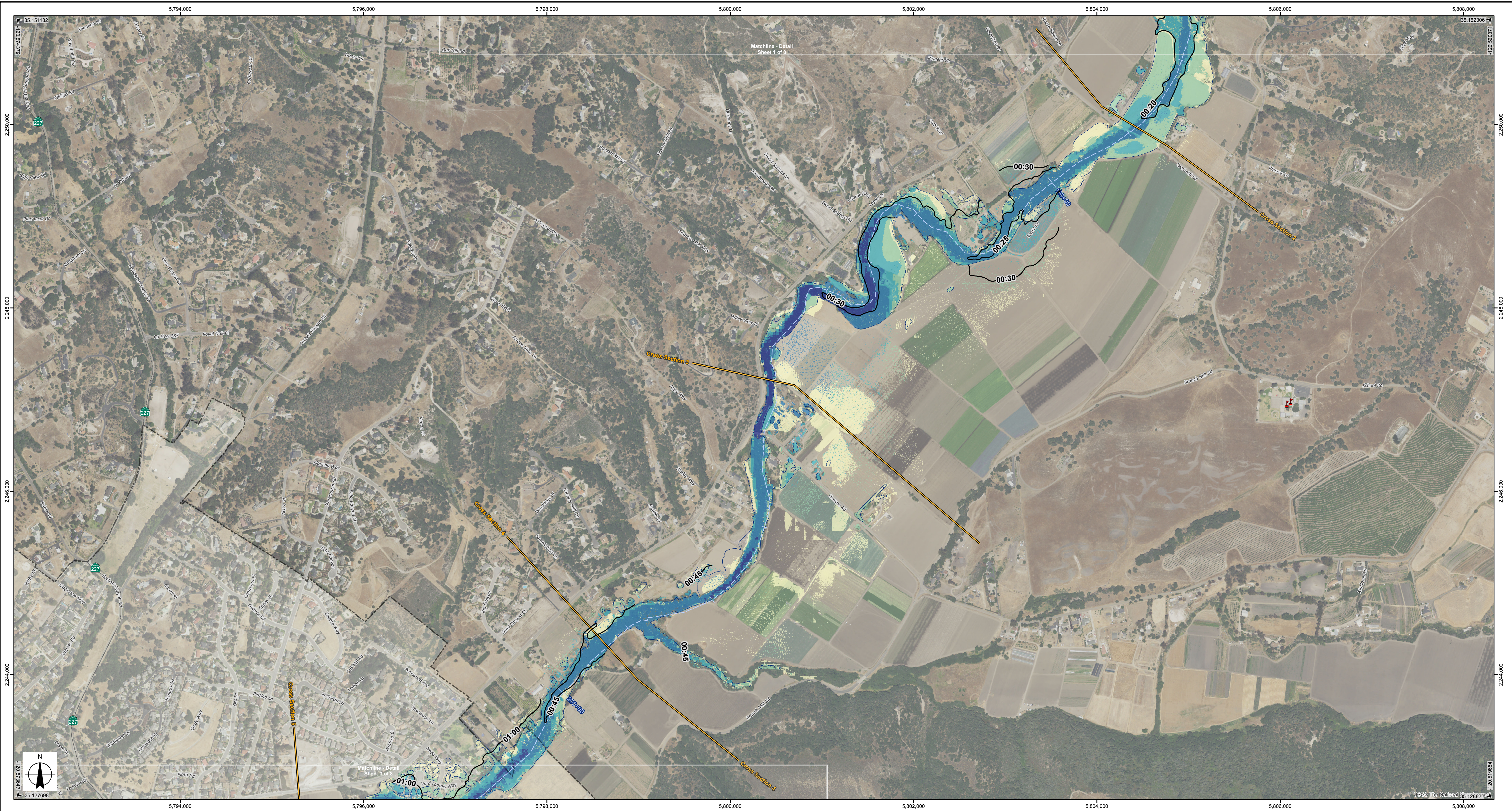
Notes:

- This map was developed for the benefit of local emergency managers and the California Emergency Management Agency. The information shown is approximate and should be used as a guide for emergency response and preparation purposes.
- The inundation map meets all applicable state and federal standards and has been prepared in consideration of all potential downstream hazards by a licensed civil engineer.
- The results presented herein do not reflect the structural integrity of the dam and are not a statement of the dam's safety. The analysis presented is based on a hypothetical dam failure using 2D modeling software with a 100' grid.
- Cross Section Values:**
Distance from Dam and Stationing are reckoned from the centerline of Terminal Dam along the displayed Flow Path. **Distance from Dam** is in miles and **Stationing** is in feet (Stationing 12+34 = 1,234').
Initial Wave Arrival Time, 1 Foot is the time to achieve 1 foot of water depth after initiation of the dam break.
Time to Peak is the time to achieve the maximum water depth after initiation of the dam break.
Deflood Time, 1 Foot is the time elapsed from the flood wave arrival time until water recedes to within one foot of its pre-flood water elevation.
- Cross Section Values continued:**
Peak Inundation Depth is the maximum water depth.
Peak Velocity is the maximum velocity.
Peak Discharge is an estimate of the maximum flow rate integrated over the entire cross section line.
Peak Water Elevation is the maximum water surface elevation.
Time Above 1 Foot is the time water depth is above 1 foot.
Location Description indicates major roads that cross, or are near, the Flow Path at that cross section.
- For other details refer to the supporting report "Terminal Dam Inundation Technical Study" 31 December 2017.
- Structures are shown in the aerial photo on the maps but may not clearly display all possible structures potentially within the inundation limits.
- Map projection: California State Plane, Zone 5, Feet, North American Datum 1983. **Reference Points** and border tics display these coordinate values. All elevations are referenced to North American Vertical Datum 1988.

Legend:

- School/Day Care
- Law Enforcement Facility
- CalFire Facility
- Licensed Healthcare Facility
- Flow Path
- Cross Section
- Approx. Time to 1 Foot Depth (h:m)
- Approx. Maximum Flooding Extent
- Maximum Inundation Depth (feet)
 - ≤ 2
 - >2 to 5
 - >5 to 10
 - >10 to 20
 - >20

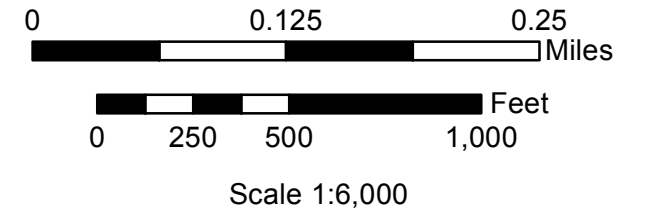
Data Sources: Incorporated City Limits from CalFire, January 2017. Licensed Healthcare Facilities from Office of Statewide Health Planning and Development, January 2012. Schools, Fire Stations and Law Enforcement Facilities from San Luis Obispo County, 2017. Highways are from TIGER, 2013. Aerial Photography from National Agricultural Imagery Program, USDA, 2016.



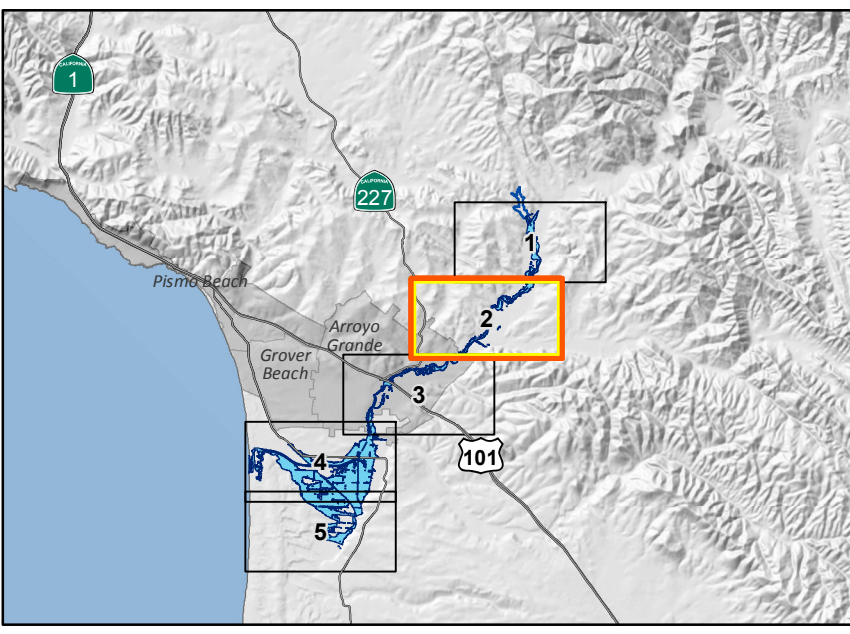
Cross Section	Distance from Dam (mi)	Station	Initial Wave Arrival Time, 1 Foot (hh:mm)	Time to Peak (hh:mm)	Peak Inundation Depth (ft)	Peak Velocity (fps)	Peak Discharge (cfs)	Peak Water Elevation (ft)	Location Description
2	1.6	83+22	0:20	0:34	15.5	8.8	23,473	228	Cicchetti Road
3	2.5	131+49	0:33	0:50	33.1	10.7	15,177	200	Upstream of Huasna Road
4	2.9	153+20	0:42	1:00	18.7	5.6	13,299	155	Downstream of Tar Spring Creek
5	3.4	179+82	0:58	1:16	23.7	11.2	10,644	139	

Notes:

- This map was developed for the benefit of local emergency managers and the California Emergency Management Agency. The information shown is approximate and should be used as a guide for emergency response and preparation purposes.
- The inundation map meets all applicable state and federal standards and has been prepared in consideration of all potential downstream hazards by a licensed civil engineer.
- The results presented herein do not reflect the structural integrity of the dam and are not a statement of the dam's safety. The analysis presented is based on a hypothetical dam failure using 2D modeling software with a 100' grid.
- Cross Section Values:
Distance from Dam and Stationing are reckoned from the centerline of Terminal Dam along the displayed Flow Path.
Distance from Dam is in miles and **Stationing** is in feet (Stationing 12+34 = 1.234).
Initial Wave Arrival Time, 1 Foot is the time to achieve 1 foot of water depth after initiation of the dam break.
Time to Peak is the time to achieve the maximum water depth after initiation of the dam break.
Deflood Time, 1 Foot is the time elapsed from the flood wave arrival time until water recedes to within one foot of its pre-flood water elevation.
- Cross Section Values continued:
Peak Inundation Depth is the maximum water depth.
Peak Velocity is the maximum velocity.
Peak Discharge is an estimate of the maximum flow rate integrated over the entire cross section line.
Peak Water Elevation is the maximum water surface elevation.
Time Above 1 Foot is the time water depth is above 1 foot.
Location Description indicates major roads that cross, or are near, the Flow Path at that cross section.
- The values displayed in the table for each cross section are the maximum for that parameter along each cross section line, except for the **Initial Wave Arrival Time, 1 Foot and Time to Peak** which are the minimum for that parameter along each cross section line. The minimum time values associated with 1D channels embedded in the 2D model are excluded.
- For other details refer to the supporting report "Terminal Dam Inundation Technical Study" 31 December 2017.
- Structures are shown in the aerial photo on the maps but may not clearly display all possible structures potentially within the inundation limits.
- Map projection: California State Plane, Zone 5, Feet, North American Datum 1983. **Reference Points** and border ticks display these coordinate values. All elevations are referenced to North American Vertical Datum 1988.



- School/Day Care
- Law Enforcement Facility
- CalFire Facility
- Licensed Healthcare Facility
- Flow Path
- Cross Section
- 2- Approx. Time to 1 Foot Depth (h:m)
- Approx. Maximum Flooding Extent
- Maximum Inundation Depth (feet)**
- ≤ 2
- >2 to 5
- >5 to 10
- >10 to 20
- >20



COUNTY OF SAN LUIS OBISPO

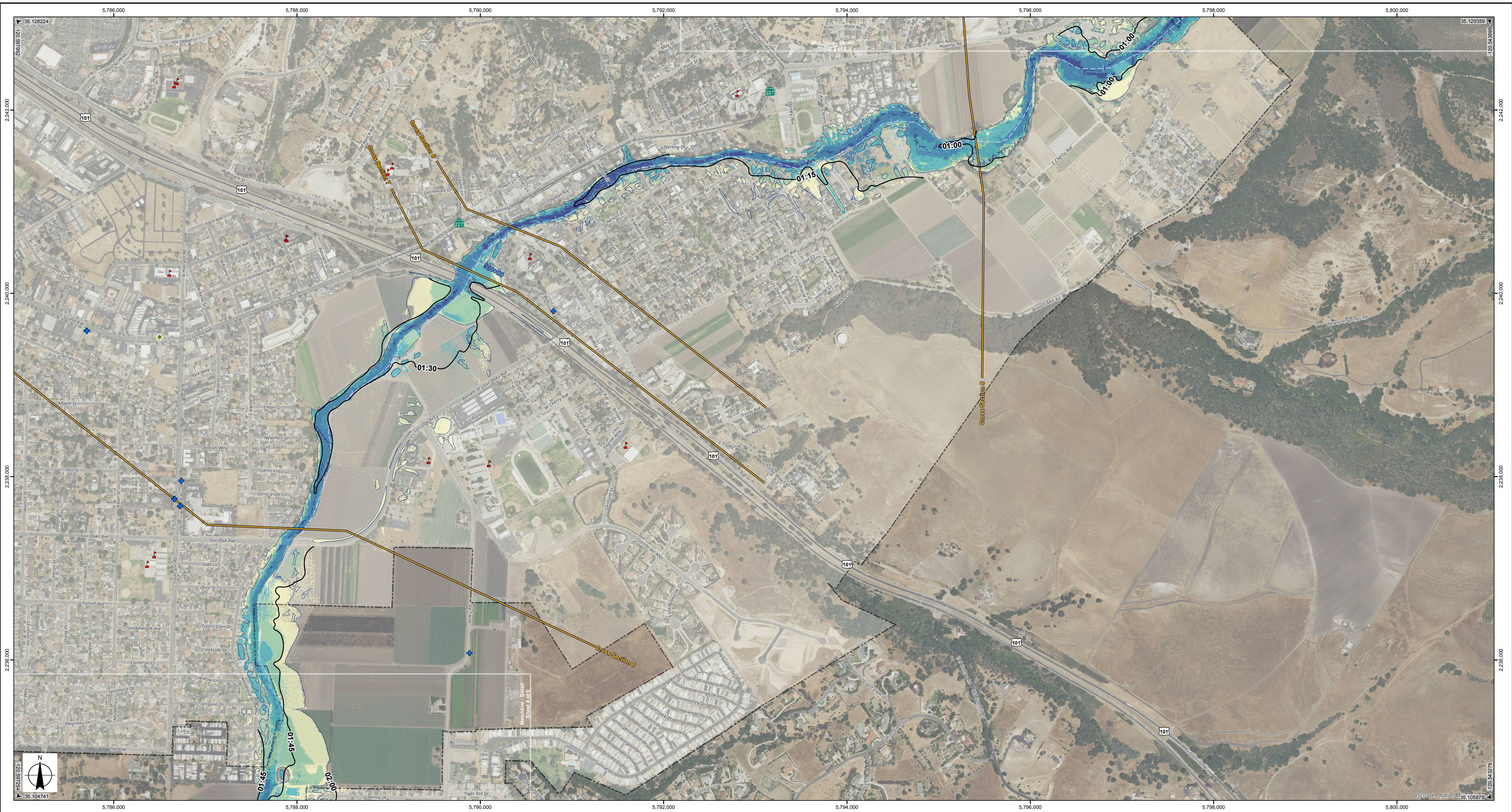
DO NOT DISTRIBUTE THIS MAP OR THE ASSOCIATED MODEL INFORMATION WITHOUT PRIOR NOTIFICATION TO THE FEDERAL DAM OWNER

NOTICE
 San Luis Obispo County deems this information to be Confidential.
 Do not share the information unless prior approval is obtained from SLO County's Dam Safety Officer at (805) 781-5252.

Inundation Depth Map for Fair Weather Hypothetical Failure of Terminal Dam
Flood Depth and Arrival Time
 Federal Dam ID: CA00888 State Dam ID: 1055.002
Detail Sheet 2 of 5
 San Luis Obispo County
 © 2017 San Luis Obispo County

Model Date	Map Date	Description	Prepared By	Accepted By
12/24/2017	02/18/2019	FINAL	GEI Consultants	DSOD

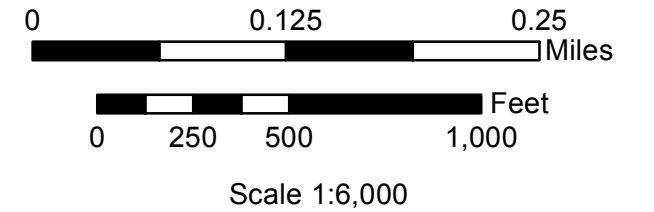
Dam Owner: San Luis Obispo County Flood Control and Water Conservation District
 County Government Center, Room 206
 San Luis Obispo, CA 93408
 Information Contact: John Diodati, (805) 781-5252
Emergency Contact: (805) 781-5252
 Inundation Analysis Performed by: GEI Consultants, Inc.
 Mark Fortner, PE 48266



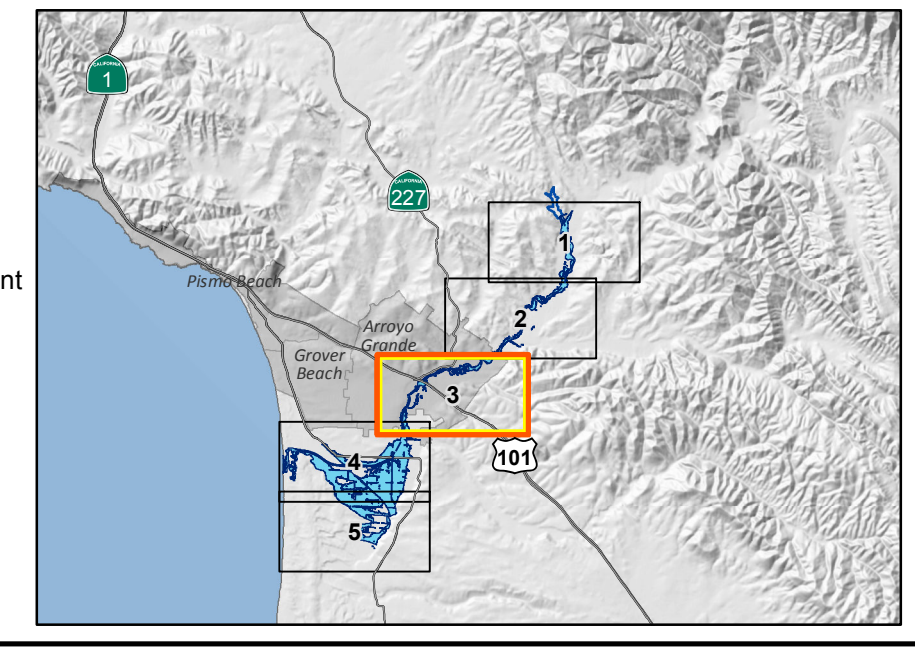
Cross Section	Distance from Dam (mi)	Station	Initial Wave Arrival Time, 1 Foot (hh:mm)	Time to Peak (h)	Peak Inundation Depth (ft)	Peak Velocity (fps)	Peak Discharge (cfs)	Peak Water Elevation (ft)	Location Description
5	3.4	179+82	0:58	1:16	23.7	11.2	10,644	139	
6	4.8	255+54	1:12	1:37	23.0	6.0	9,279	102	Traffic Way
7	6.1	320+24	1:20	1:39	19.6	4.9	9,067	96	US 101 Highway
8	6.8	359+57	1:32	1:52	20.6	6.3	8,358	80	Fair Oaks Avenue

Notes:

- This map was developed for the benefit of local emergency managers and the California Emergency Management Agency. The information shown is approximate and should be used as a guide for emergency response and preparation purposes.
- The inundation map meets all applicable state and federal standards and has been prepared in consideration of all potential downstream hazards by a licensed civil engineer.
- The results presented herein do not reflect the structural integrity of the dam and are not a statement of the dam's safety. The analysis presented is based on a hypothetical dam failure using 2D modeling software with a 100' grid.
- Cross Section Values:** Distance from Dam and Stationing are reckoned from the centerline of Terminal Dam along the displayed Flow Path. Distance from Dam is in miles and Stationing is in feet (Stationing 12+34 = 1.234).
Initial Wave Arrival Time, 1 Foot is the time to achieve 1 foot of water depth after initiation of the dam break.
Time to Peak is the time to achieve the maximum water depth after initiation of the dam break.
Deflood Time, 1 Foot is the time elapsed from the flood wave arrival time until water recedes to within one foot of its pre-flood water elevation.
- Cross Section Values continued:
Peak Inundation Depth is the maximum water depth.
Peak Velocity is the maximum velocity.
Peak Discharge is an estimate of the maximum flow rate integrated over the entire cross section line.
Peak Water Elevation is the maximum water surface elevation.
Time Above 1 Foot is the time water depth is above 1 foot.
Location Description indicates major roads that cross, or are near, the Flow Path at that cross section.
- The values displayed in the table for each cross section are the maximum for that parameter along each cross section line, except for the **Initial Wave Arrival Time, 1 Foot** and **Time to Peak** which are the minimum for that parameter along each cross section line. The minimum time values associated with 1D channels embedded in the 2D model are excluded.
- For other details refer to the supporting report "Terminal Dam Inundation Technical Study" 31 December 2017.
- Structures are shown in the aerial photo on the maps but may not clearly display all possible structures potentially within the inundation limits.
- Map projection: California State Plane, Zone 5, Feet, North American Datum 1983. **Reference Points** and border tics display these coordinate values. All elevations are referenced to North American Vertical Datum 1988.
- Map Sources: Incorporated City Limits from CalFire, January 2017. Licensed Healthcare Facilities from Office of Statewide Health Planning and Development, January 2012. Schools, Fire Stations and Law Enforcement Facilities from San Luis Obispo County, 2017. Highways are from TIGER, 2013. Aerial Photography from National Agricultural Imagery Program, USDA, 2016.



- School/Day Care
- Law Enforcement Facility
- CalFire Facility
- Licensed Healthcare Facility
- Flow Path
- Cross Section
- 2- Approx. Time to 1 Foot Depth (h:m)
- Approx. Maximum Flooding Extent
- Maximum Inundation Depth (feet)**
- ≤ 2
- >2 to 5
- >5 to 10
- >10 to 20
- >20



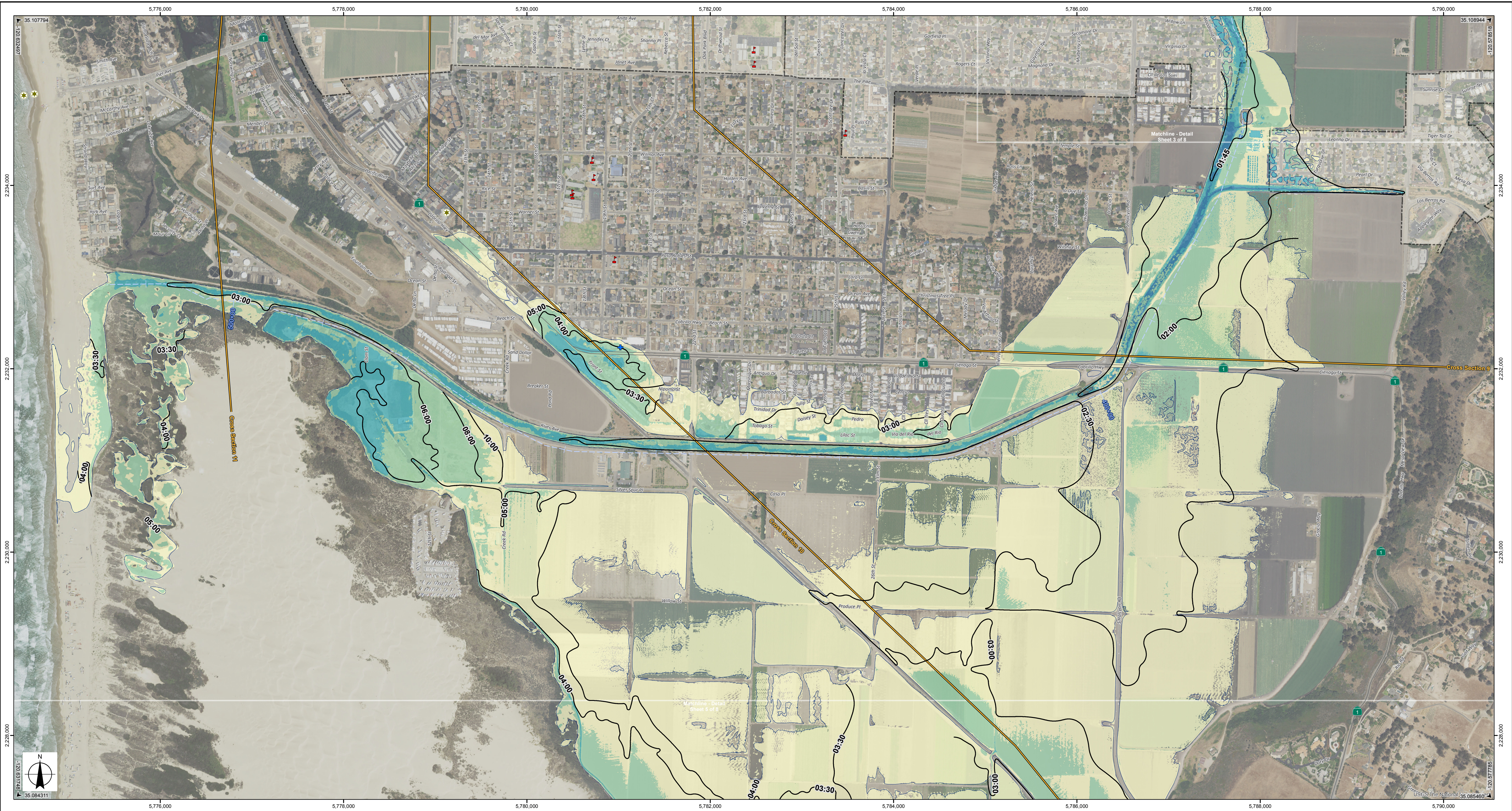
DO NOT DISTRIBUTE THIS MAP OR THE ASSOCIATED MODEL INFORMATION WITHOUT PRIOR NOTIFICATION TO THE FEDERAL DAM OWNER

NOTICE
 San Luis Obispo County deems this information to be Confidential. Do not share the information unless prior approval is obtained from SLO County's Dam Safety Officer at (805) 781-5252.

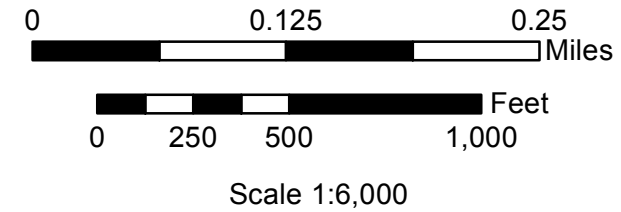
Inundation Depth Map for Fair Weather Hypothetical Failure of Terminal Dam
Flood Depth and Arrival Time
 Federal Dam ID: CA00888 State Dam ID: 1055.002
Detail Sheet 3 of 5
 San Luis Obispo County
 © 2017 San Luis Obispo County

Model Date	Map Date	Description	Prepared By	Accepted By
12/24/2017	02/18/2019	FINAL	GEI Consultants	DSOD

Dam Owner: San Luis Obispo County Flood Control and Water Conservation District
 County Government Center, Room 206
 San Luis Obispo, CA 93408
 Information Contact: John Diodati, (805) 781-5252
Emergency Contact: (805) 781-5252
 Inundation Analysis Performed by: GEI Consultants, Inc.
 Mark Fortner, PE 48266

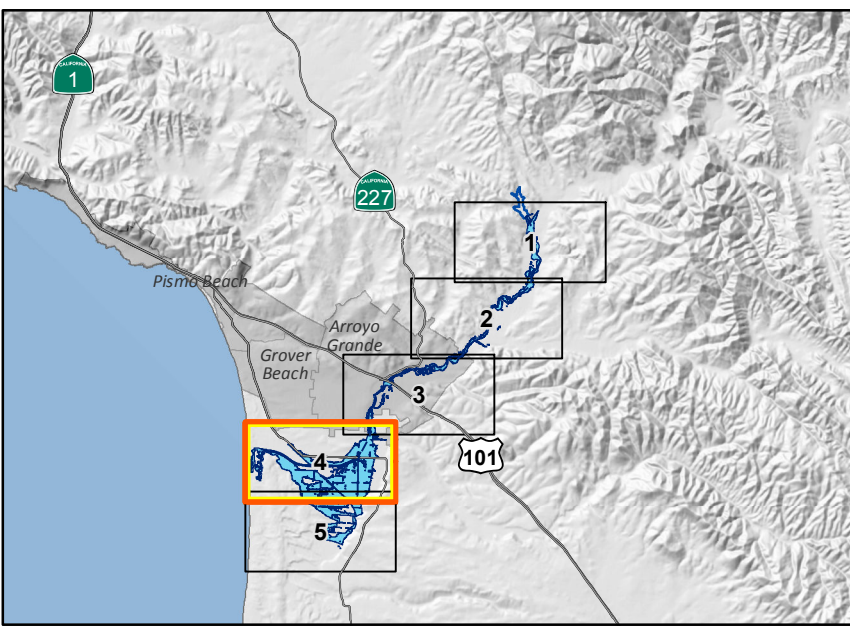


Cross Section	Distance from Dam (mi)	Stationing	Initial Wave Arrival Time, 1 Foot (hh:mm)	Time to Peak (hh:mm)	Peak Inundation Depth (ft)	Peak Velocity (fps)	Peak Discharge (cfs)	Peak Water Elevation (ft)	Location Description
9	7.7	406+81	1:55	2:21	11.4	4.5	7,178	53	Cabrillo Highway (Hwy 1)
10	8.7	450+77	2:20	2:57	8.0	3.5	3,219	31	Railroad Bridge downstream of 22nd Street
11	8.9	467+83	2:55	3:48	6.2	2.1	1,119	14	Outlet of Arroyo Grande Creek into Ocean



- Notes:**
- This map was developed for the benefit of local emergency managers and the California Emergency Management Agency. The information shown is approximate and should be used as a guide for emergency response and preparation purposes.
 - The inundation map meets all applicable state and federal standards and has been prepared in consideration of all potential downstream hazards by a licensed civil engineer.
 - The results presented herein do not reflect the structural integrity of the dam and are not a statement of the dam's safety. The analysis presented is based on a hypothetical dam failure using 2D modeling software with a 100' grid.
 - Cross Section Values:
Distance from Dam and Stationing are reckoned from the centerline of Terminal Dam along the displayed Flow Path.
Distance from Dam is in miles and **Stationing** is in feet (Stationing 12+34 = 1,234).
Initial Wave Arrival Time, 1 Foot is the time to achieve 1 foot of water depth after initiation of the dam break.
Time to Peak is the time to achieve the maximum water depth after initiation of the dam break.
Deflood Time, 1 Foot is the time elapsed from the flood wave arrival time until water recedes to within one foot of its pre-flood water elevation.
 - Cross Section Values continued:
Peak Inundation Depth is the maximum water depth.
Peak Velocity is the maximum velocity.
Peak Discharge is an estimate of the maximum flow rate integrated over the entire cross section line.
Peak Water Elevation is the maximum water surface elevation.
Time Above 1 Foot is the time water depth is above 1 foot.
Location Description indicates major roads that cross, or are near, the Flow Path at that cross section.
 - The values displayed in the table for each cross section are the maximum for that parameter along each cross section line, except for the **Initial Wave Arrival Time, 1 Foot and Time to Peak** which are the minimum for that parameter along each cross section line. The minimum time values associated with TD channels embedded in the 2D model are excluded.
 - For other details refer to the supporting report "Terminal Dam Inundation Technical Study" 31 December 2017.
 - Structures are shown in the aerial photo on the maps but may not clearly display all possible structures potentially within the inundation limits.
 - Map projection: California State Plane, Zone 5, Feet, North American Datum 1983. **Reference Points** and border ticks display these coordinate values. All elevations are referenced to North American Vertical Datum 1988.

- School/Day Care
- Law Enforcement Facility
- CalFire Facility
- Licensed Healthcare Facility
- Flow Path
- Cross Section
- Approx. Time to 1 Foot Depth (h:m)
- Approx. Maximum Flooding Extent
- Maximum Inundation Depth (feet)
 - ≤ 2
 - >2 to 5
 - >5 to 10
 - >10 to 20
 - >20



COUNTY OF SAN LUIS OBISPO

DO NOT DISTRIBUTE THIS MAP OR THE ASSOCIATED MODEL INFORMATION WITHOUT PRIOR NOTIFICATION TO THE FEDERAL DAM OWNER

NOTICE
 San Luis Obispo County deems this information to be Confidential.
 Do not share the information unless prior approval is obtained from SLO County's Dam Safety Officer at (805) 781-5252.

Inundation Depth Map for Fair Weather Hypothetical Failure of Terminal Dam
Flood Depth and Arrival Time
 Federal Dam ID: CA00888 State Dam ID: 1055.002
Detail Sheet 4 of 5
 San Luis Obispo County
 © 2017 San Luis Obispo County

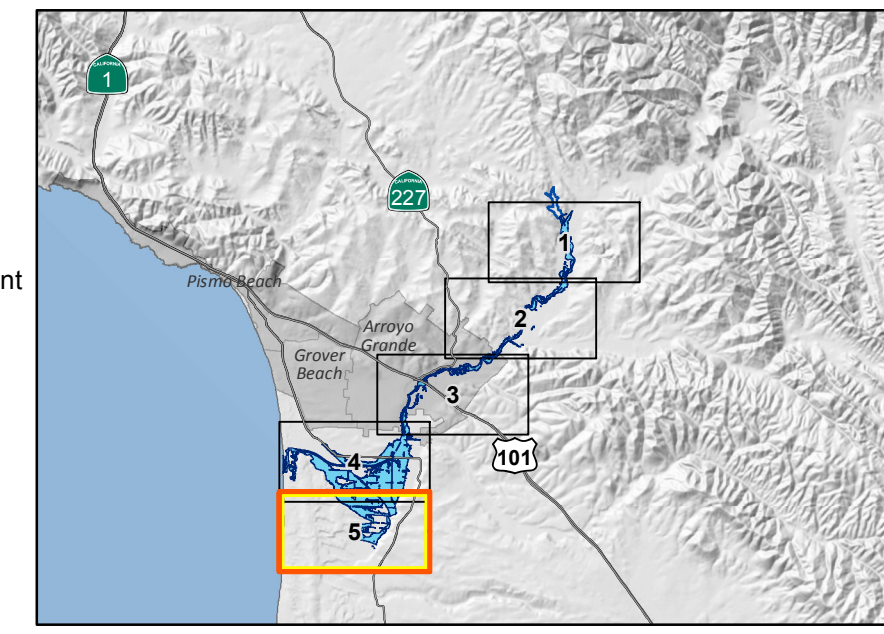
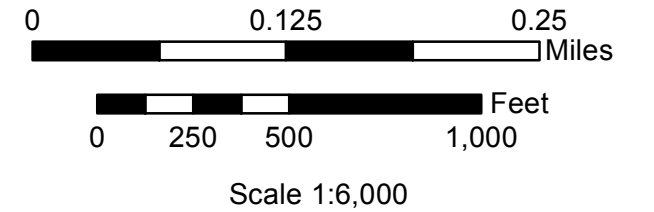
Model Date	Map Date	Description	Prepared By	Accepted By
12/24/2017	02/18/2019	FINAL	GEI Consultants	DSOD

Dam Owner: San Luis Obispo County Flood Control and Water Conservation District
 County Government Center, Room 206
 San Luis Obispo, CA 93408
 Information Contact: John Diodati, (805) 781-5252
Emergency Contact: (805) 781-5252

Inundation Analysis Performed by:
 GEI Consultants, Inc.
 Mark Fortner, PE 48266



Cross Section	Distance from Dam (mi)	Station	Initial Wave Arrival Time, 1 Foot (hh:mm)	Time to Peak (hh:mm)	Peak Inundation Depth (ft)	Peak Velocity (fps)	Peak Discharge (cfs)	Peak Water Elevation (ft)	Location Description
10	8.7	460+77	2:20	2:57	8.0	3.5	3,219	31	Railroad Bridge downstream of 22nd Street



DO NOT DISTRIBUTE THIS MAP OR THE ASSOCIATED MODEL INFORMATION WITHOUT PRIOR NOTIFICATION TO THE FEDERAL DAM OWNER

NOTICE
San Luis Obispo County deems this information to be Confidential. Do not share the information unless prior approval is obtained from SLO County's Dam Safety Officer at (805) 781-5252.

Inundation Depth Map for Fair Weather Hypothetical Failure of Terminal Dam
Flood Depth and Arrival Time
 Federal Dam ID: CA00888 State Dam ID: 1055.002
Detail Sheet 5 of 5
 San Luis Obispo County
 © 2017 San Luis Obispo County

Model Date 12/24/2017	Map Date 02/18/2019	Description FINAL	Prepared By GEI Consultants	Accepted By DSOD
--------------------------	------------------------	----------------------	--------------------------------	---------------------

Dam Owner: San Luis Obispo County Flood Control and Water Conservation District
 County Government Center, Room 206
 San Luis Obispo, CA 93408
 Information Contact: John Diodati, (805) 781-5252
Emergency Contact: (805) 781-5252

Notes:
 1. This map was developed for the benefit of local emergency managers and the California Emergency Management Agency. The information shown is approximate and should be used as a guide for emergency response and preparation purposes.
 2. The inundation map meets all applicable state and federal standards and has been prepared in consideration of all potential downstream hazards by a licensed civil engineer.
 3. The results presented herein do not reflect the structural integrity of the dam and are not a statement of the dam's safety. The analysis presented is based on a hypothetical dam failure using 2D modeling software with a 100' grid.
 4. Cross Section Values:
Distance from Dam and Stationing are reckoned from the centerline of Terminal Dam along the displayed Flow Path.
Distance from Dam is in miles and **Stationing** is in feet (Stationing 12+34 = 1,234').
Initial Wave Arrival Time, 1 Foot is the time to achieve 1 foot of water depth after initiation of the dam break.
Time to Peak is the time to achieve the maximum water depth after initiation of the dam break.
Deflood Time, 1 Foot is the time elapsed from the flood wave arrival time until water recedes to within one foot of its pre-flood water elevation.

4. Cross Section Values continued:
Peak Inundation Depth is the maximum water depth.
Peak Velocity is the maximum velocity.
Peak Discharge is an estimate of the maximum flow rate integrated over the entire cross section line.
Peak Water Elevation is the maximum water surface elevation.
Time Above 1 Foot is the time water depth is above 1 foot.
Location Description indicates major roads that cross, or are near, the Flow Path at that cross section.
 5. The values displayed in the table for each cross section are the maximum for that parameter along each cross section line, except for the **Initial Wave Arrival Time, 1 Foot and Time to Peak** which are the minimum for that parameter along each cross section line. The minimum time values associated with TD channels embedded in the 2D model are excluded.
 6. For other details refer to the supporting report "Terminal Dam Inundation Technical Study" 31 December 2017.
 7. Structures are shown in the aerial photo on the maps but may not clearly display all possible structures potentially within the inundation limits.
 8. Map projection: California State Plane, Zone 5, Feet, North American Datum 1983. **Reference Points** and border tics display these coordinate values. All elevations are referenced to North American Vertical Datum 1988.

- School/Day Care
 - Law Enforcement Facility
 - CalFire Facility
 - Licensed Healthcare Facility
 - Flow Path
 - Cross Section
 - Approx. Time to 1 Foot Depth (h:m)
 - Approx. Maximum Flooding Extent
- Maximum Inundation Depth (feet)**
- ≤ 2
 - >2 to 5
 - >5 to 10
 - >10 to 20
 - >20