

Los Osos Water Recycling Facility



Information Session & Updates



COUNTY OF SAN LUIS OBISPO

www.slocounty.ca.gov

Purpose

- Septic discharge polluted only source of water
 - Nitrates upper aquifer
 - Seawater intrusion lower aquifer
- 1983 California Regional Water Quality Control Board mandate
- Deliver recycled water for irrigation and groundwater protection to promote water supply sustainability



History

- 2006 – Special legislation
- 2007 – \$25,000 assessment approved
- 2010 – Current rates approved
- 2012 – Construction of collection system began
- 2014 – Construction of WRF began
- 2016 – Properties began connecting
- 2019 – First recycled water connection
- 2020 – 99% currently connected to the system



System Overview

Currently treating 500,000 gallons/day

100% Recycled Water Reuse

Collection system

- 42 miles of collection pipe
- 21 pump stations

Distribution system

- 34 acre feet storage
- 6.5 miles of purple pipe
- 8 acres infiltration area
- Sea Pines Golf Course



COUNTY OF SAN LUIS OBISPO

www.slocounty.ca.gov

Operations & Maintenance Updates

- Meeting nitrate level goals
- 99% of properties connected
- Sea Pines Golf Course
- Optimized treatment processes
- Consistent operations costs over past 2 years

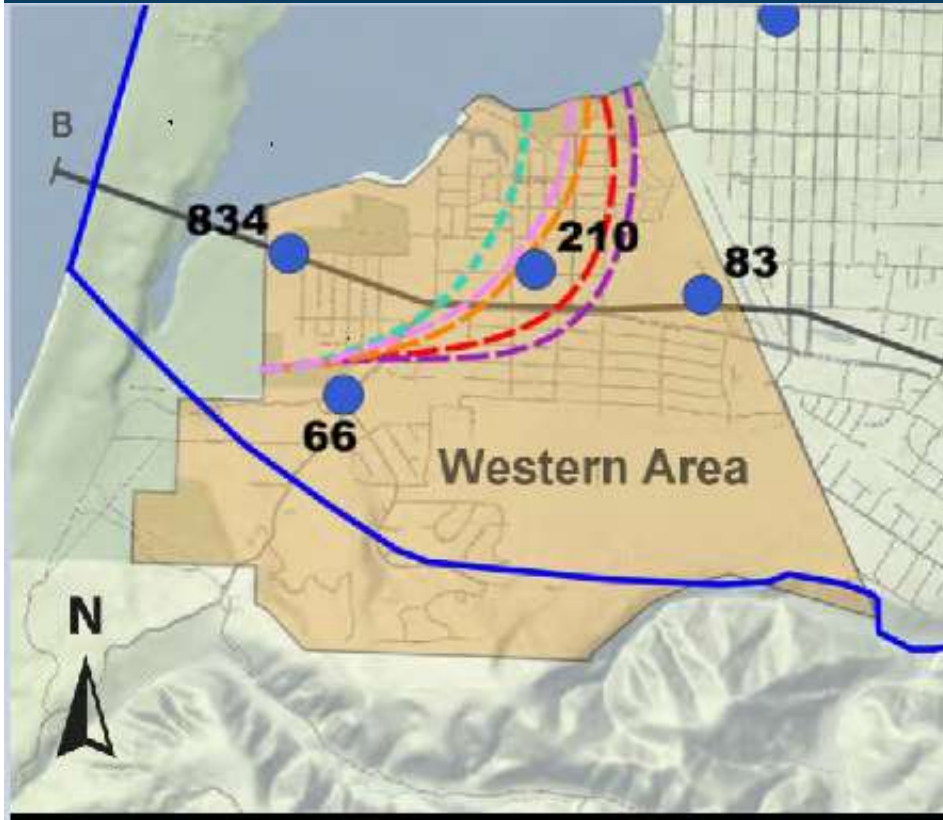


Sustainability

- Recycled water irrigation
- Stormwater capture
- Reduced electrical use
- Seawater intrusion progress
- Floating solar



Seawater Intrusion Progress



Explanation

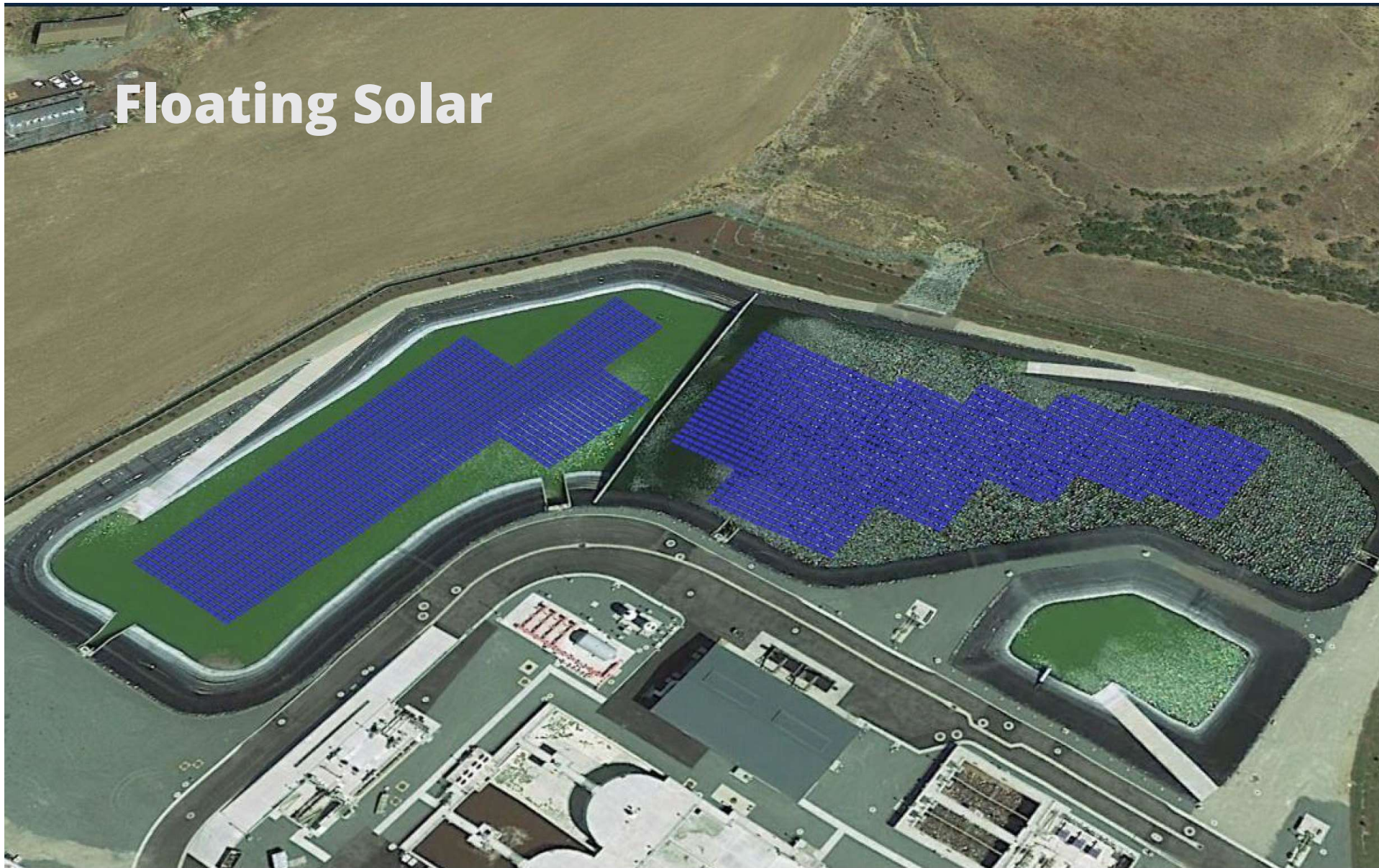
- Groundwater with Fall 2018 lower aquifer chloride concentration in milligrams per liter (mg/L)
- Cross-section alignment (Figures 5 and 19)
- Basin boundary

Seawater intrusion front in Western Area (250 mg/L chloride isopleth)

- 2005
- 2015
- 2016
- 2017
- 2018



Floating Solar



COUNTY OF SAN LUIS OBISPO

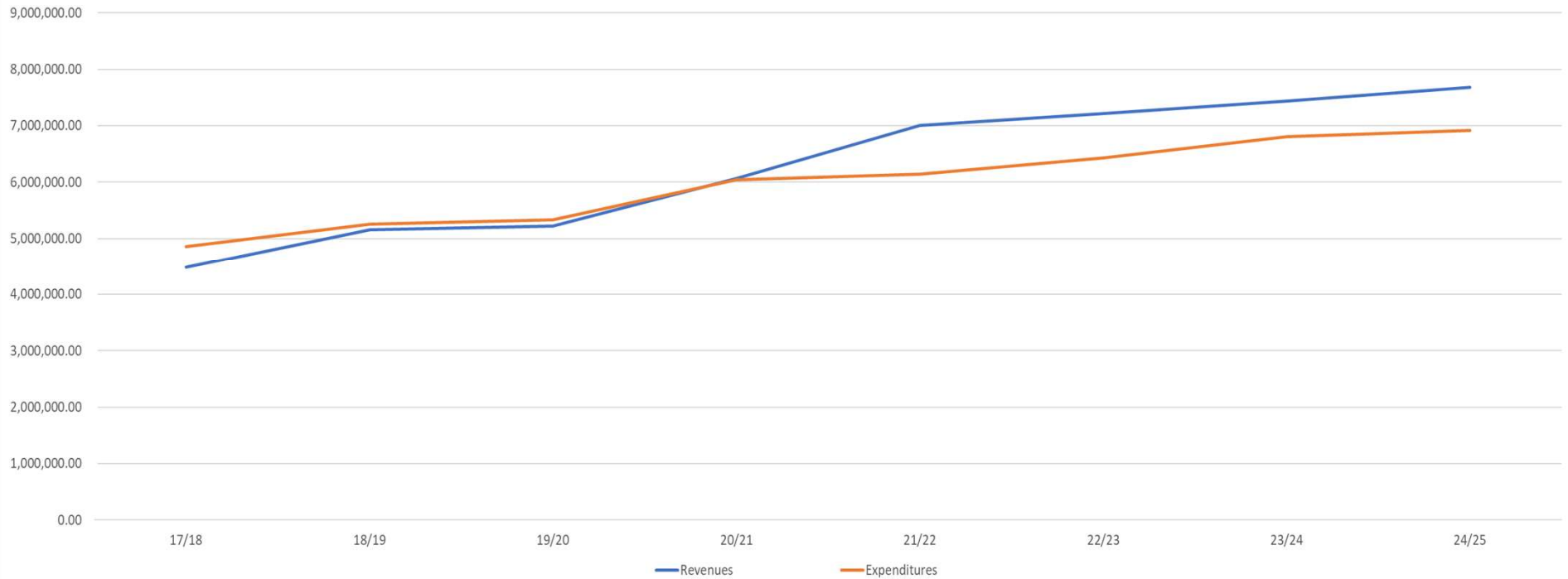
www.slocounty.ca.gov

Financial Status

- 2007 projected vs. current actual costs
- Lower water consumption than projected
- Revenue sources are lower than expenditures
- Required reserves for loans + emergency reserve



Operational Costs



COUNTY OF SAN LUIS OBISPO

www.slocounty.ca.gov

Rate Increase

- Rates are minimum (fixed) + volume (variable)
- Based on estimates over 10 years ago
- No annual cost adjustment included in rates
- Lower water consumption than expected
- Building moratorium continues
- Increase effective July 1, 2020

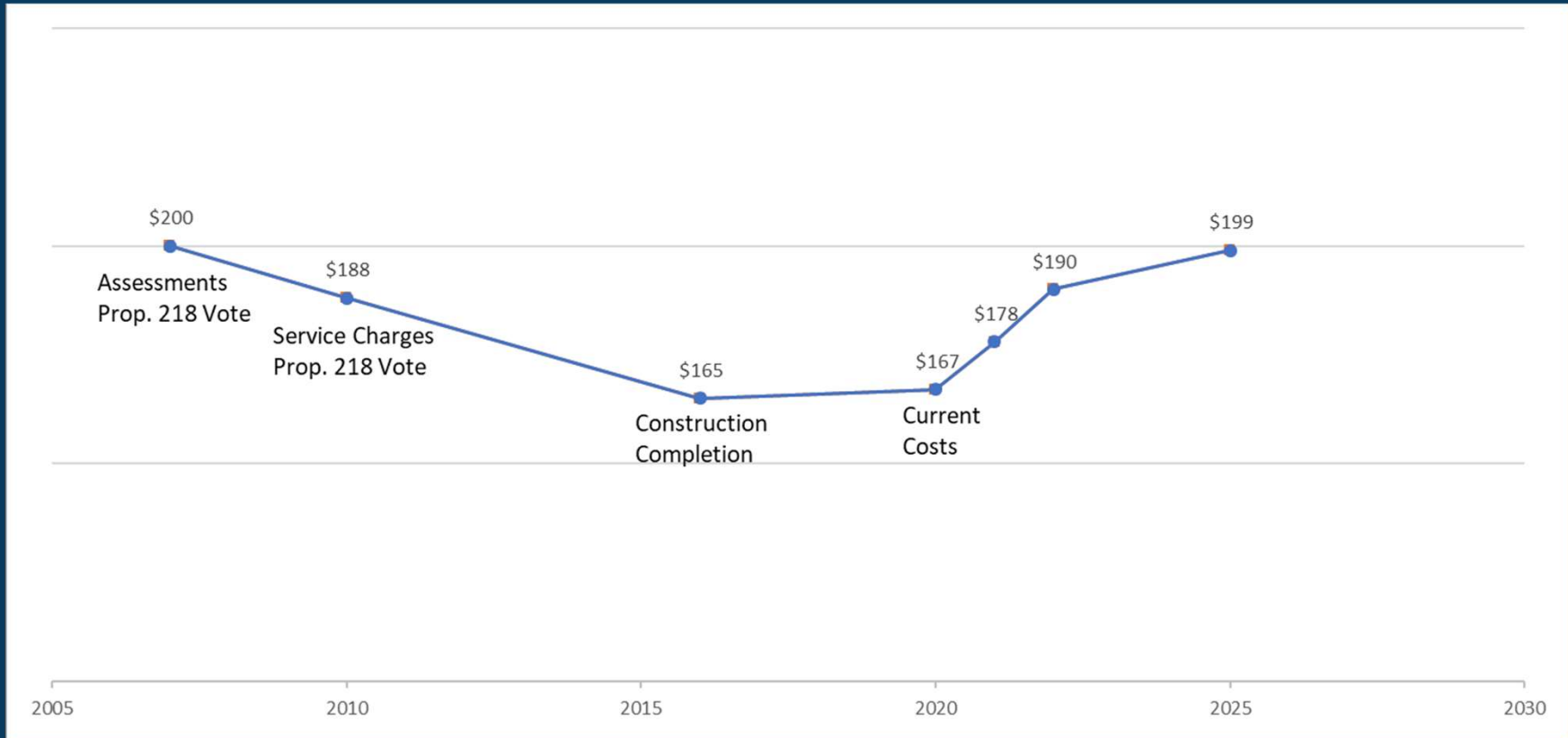


Rates Single Family

Fiscal Year	Assessment (per month)	Minimum Charge (per month)	Volume by Average CCF	Total (per month) Assessment + Minimum Charge + Volume * CCF
Current (FY 2019/20)	\$85.83	\$48.85	(\$7.54 * 4.32 CCF) \$32.57	\$167.26
Year 1 (FY 2020-21)	\$85.83	\$57.80	(\$7.88 * 4.32 CCF) \$34.04	\$177.67
Year 2 (FY 2021-22)	\$85.83	\$68.40	(\$8.24 * 4.32 CCF) \$35.60	\$189.83
Year 3 (FY 2022-23)	\$85.83	\$70.45	(\$8.49 * 4.32 CCF) \$36.66	\$192.95
Year 4 (FY 2023-24)	\$85.83	\$72.57	(\$8.74 * 4.32 CCF) \$37.76	\$196.16
Year 5 (FY 2024-25)	\$85.83	\$74.74	(\$9.00 * 4.32 CCF) \$38.90	\$199.47



Monthly Cost Estimates



Next Steps

February 25

- Introduce proposed rate ordinance to BOS

45 Days Prior to Public Hearing

- Mail Notice of Proposed Rate Increase

April 21

- Public Hearing at BOS
- Rate increase approved or protested

July 1

- Approved rate increase takes effect



Questions & Answers



COUNTY OF SAN LUIS OBISPO

www.slocounty.ca.gov

Contact us

Website:

<https://www.slocounty.ca.gov/Departments/Public-Works/Committees-Programs/Los-Osos-Water-Recycling-Facility.aspx>

Contacts:

Laura Holder, Utilities Program Manager

Phone: 805-781-5135

Email: lholder@co.slo.ca.us



COUNTY OF SAN LUIS OBISPO

www.slocounty.ca.gov