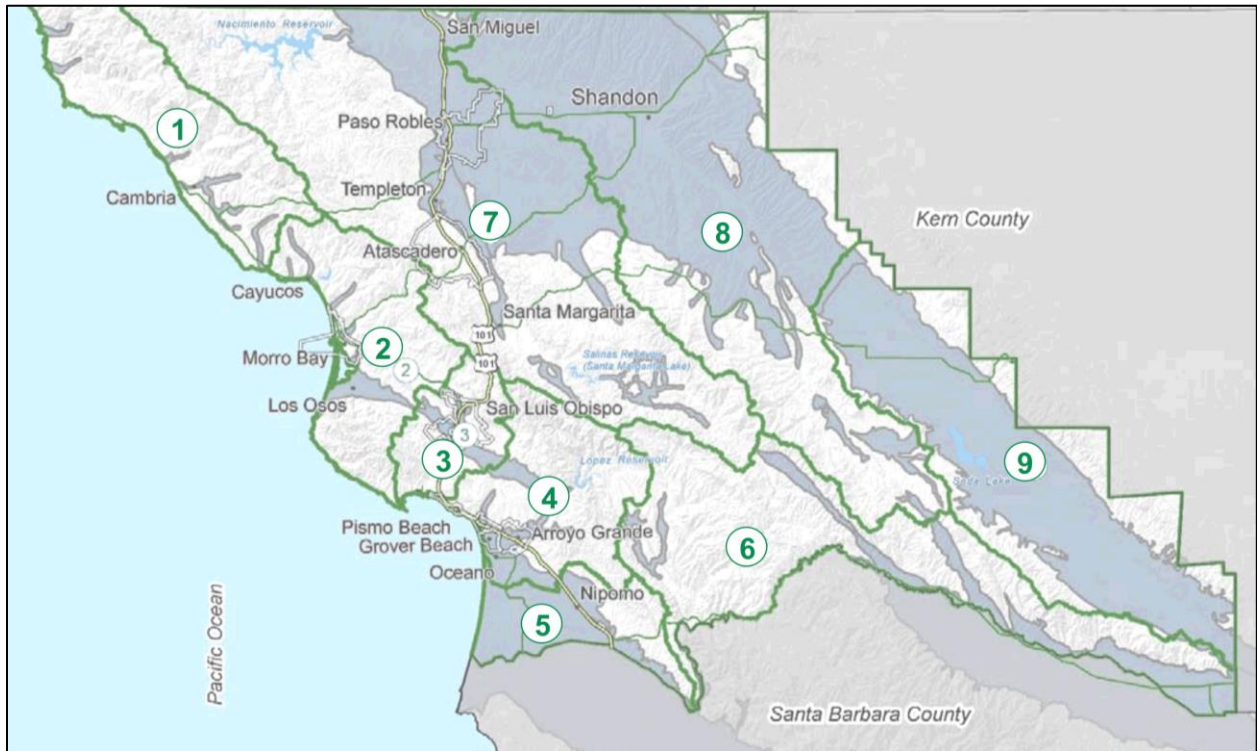


APPENDIX 1-B

Map folio for the San Luis Obispo County SWRP

For each of the 9 Watershed Groups, the following maps are included:


1. Municipal boundaries and service areas
2. Land cover
3. Groundwater basins and water features
4. Aquatic habitat
5. Watershed Management Zones
6. Parks and open spaces (mapped features present in WGs 1, 2, 3, 4, 5, and 7 only)

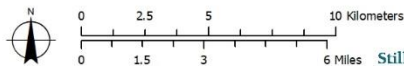


Index map of the Watershed Groups 1-9 (see following pages)



Hydrology: San Simeon/Cambria (WG 1)

-  Community Service District
-  Watershed Group
-  Stream



Stillwater Sciences

Map Location





Land Cover: San Simeon/Cambria (WG 1)

- Land Cover**
- Agriculture
 - Forested
 - Grassland/Herbaceous
 - Other
 - Urban
 - Waters and wetlands

- Watershed Group
- Stream



Stillwater Sciences

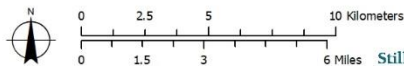
Map Location





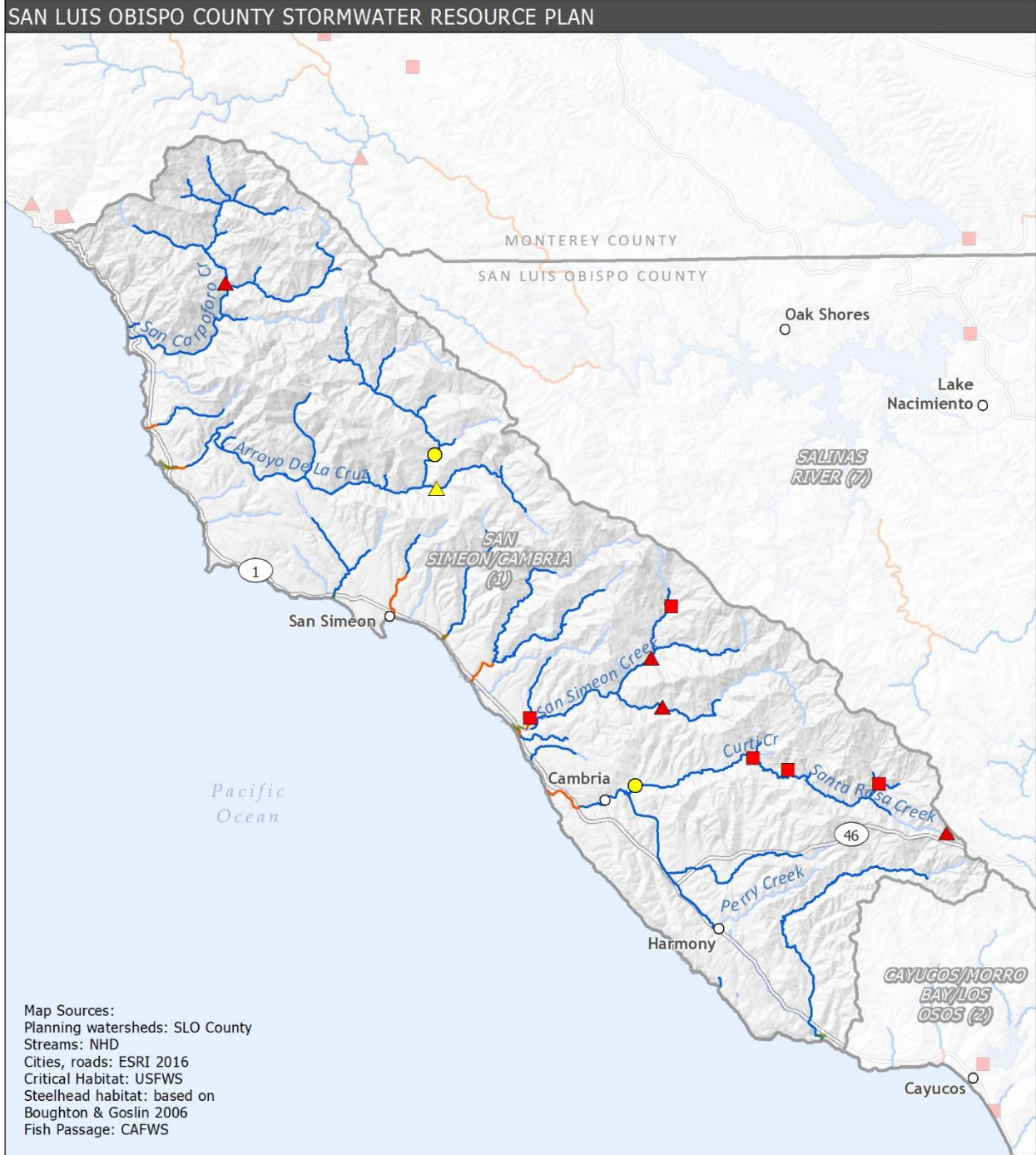
Hydrology: San Simeon/Cambria (WG 1)

- Groundwater basin (GWB)
- Watershed Group
- Stream



Map Location





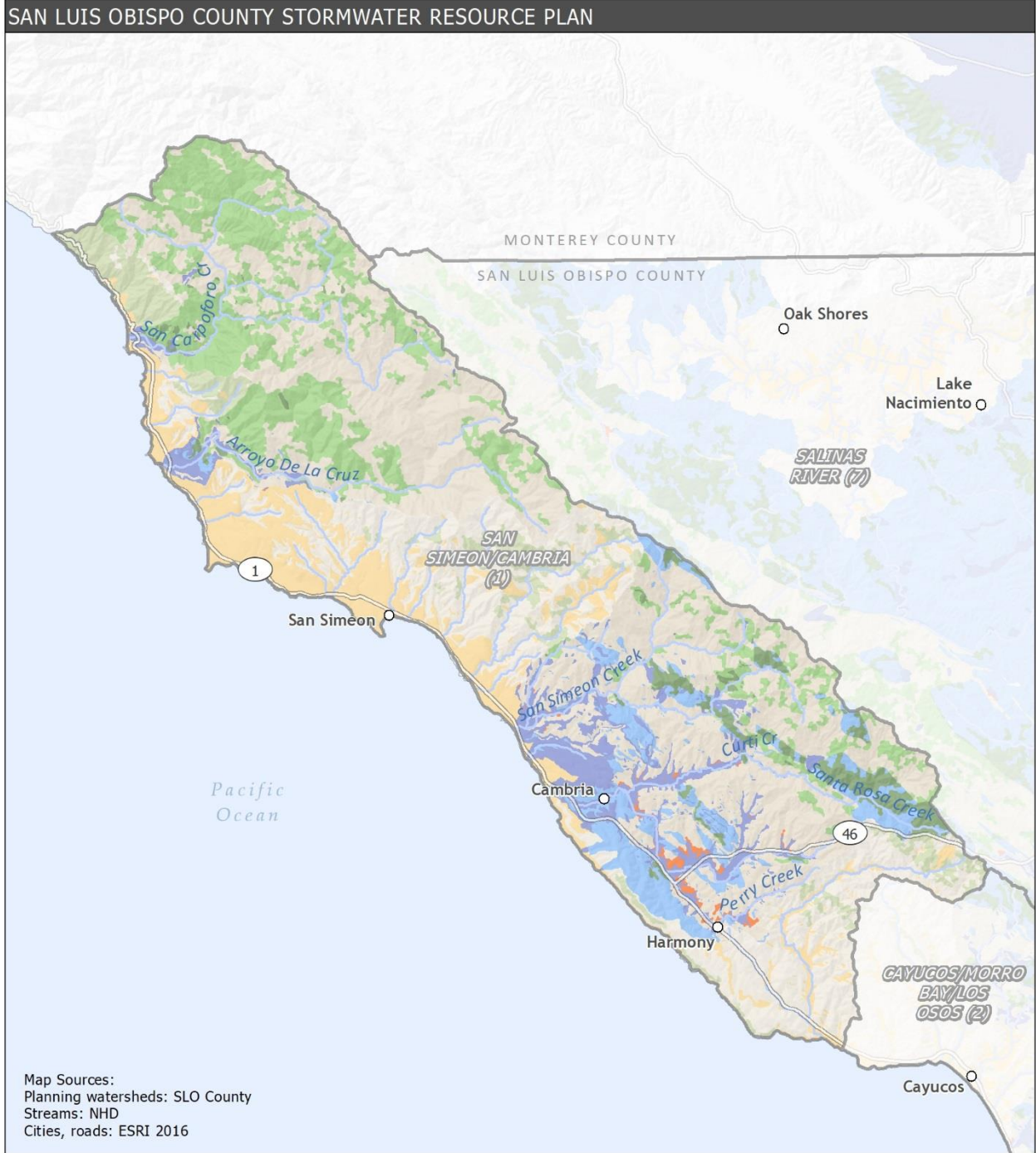
Fish Habitat: San Simeon/Cambria (WG 1)

- Tidewater goby critical habitat
- Potential steelhead migratory channel
- Potential steelhead rearing habitat
- Watershed Group
- Stream
- Natural Partial Barrier
- Natural Total Barrier
- Partial Barrier
- Total Barrier



Map Location



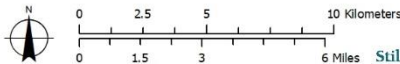


Watershed Management Zones: San Simeon/Cambria (WG 1)

Watershed Management Zone

1	4	7	10
2	5	8	
3	6	9	

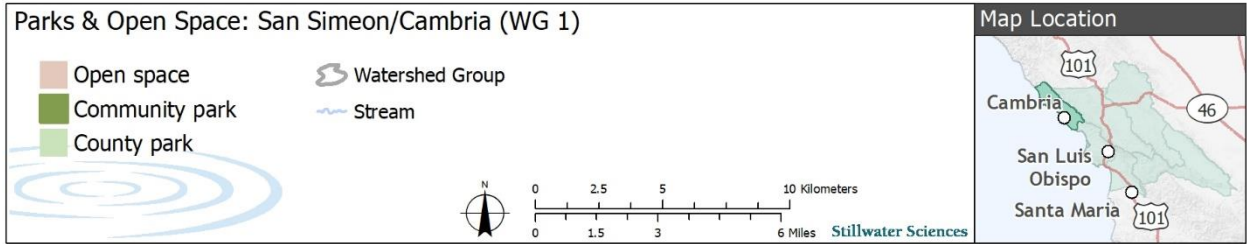
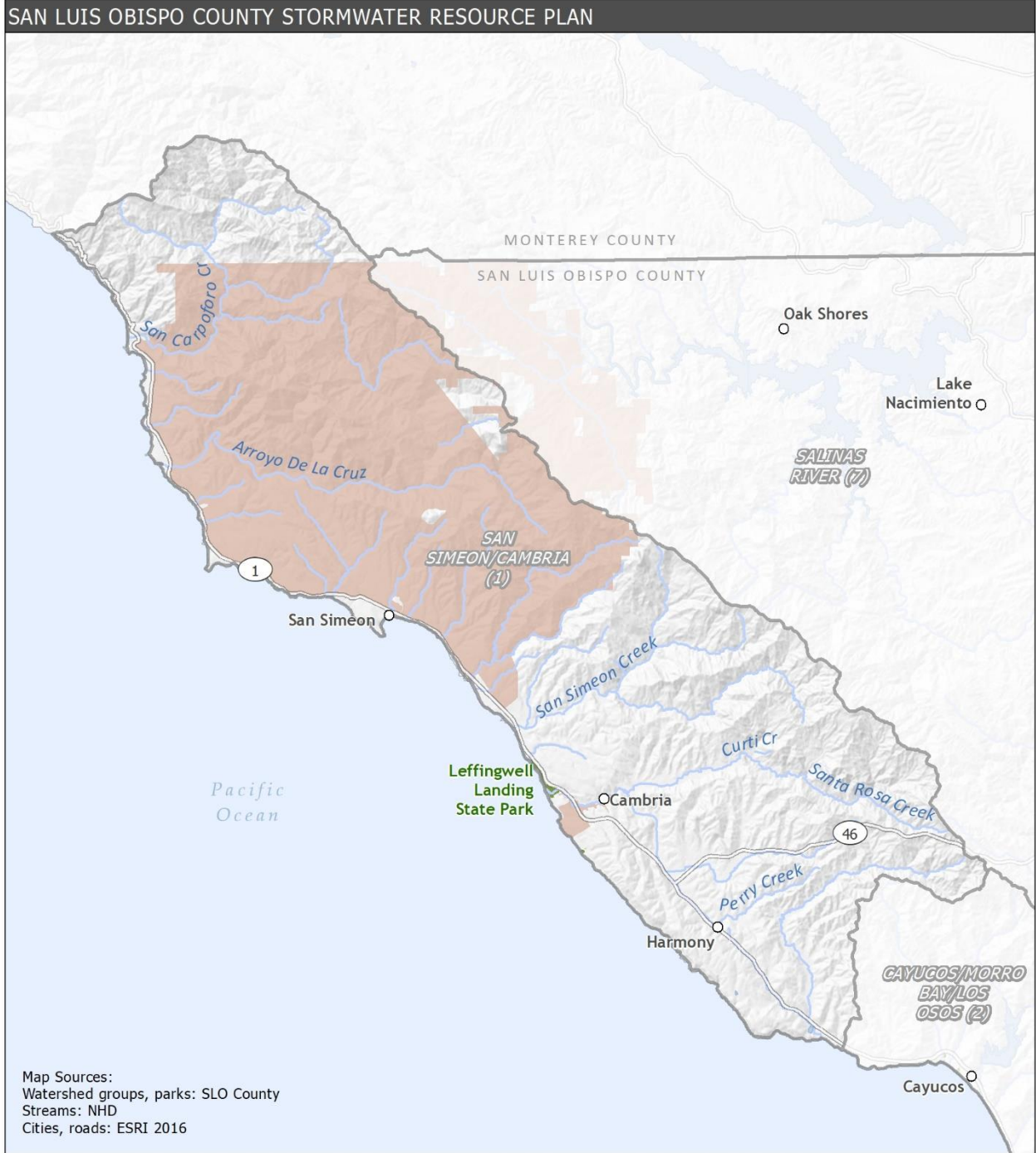
Watershed Group
Stream



Stillwater Sciences

Map Location

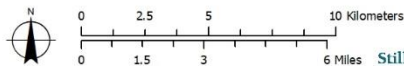






Municipal Services: Cayucos/Morro Bay/Los Osos & San Luis Obispo Creek (WG 2 & 3)

- City Limits
- Community Service District
- Watershed Group
- Stream



Stillwater Sciences

Map Location





Land Cover: Cayucos/Morro Bay/Los Osos & San Luis Obispo Creek (WG 2 & 3)

- Land Cover**
- Agriculture
 - Forested
 - Grassland/Herbaceous
 - Other
 - Urban
 - Waters and wetlands

Watershed Group

Stream






Stillwater Sciences

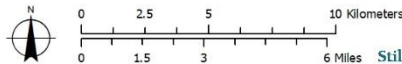
Map Location





Hydrology: Cayucos/Morro Bay/Los Osos & San Luis Obispo Creek (WG 2 & 3)

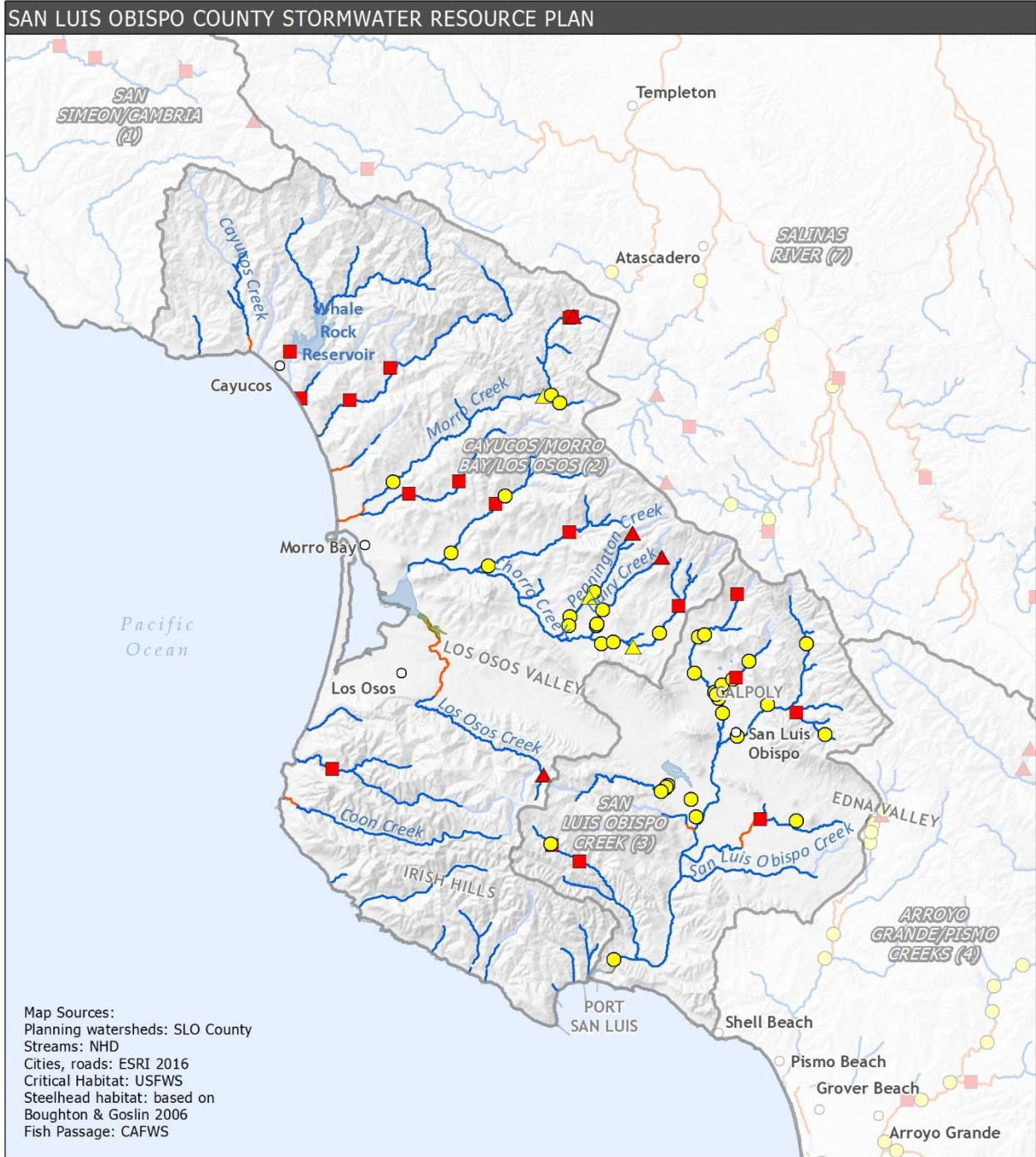
-  Groundwater basin (GWB)
-  Watershed Group
-  Stream



Stillwater Sciences

Map Location

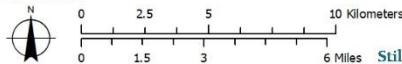




Map Sources:
 Planning watersheds: SLO County
 Streams: NHD
 Cities, roads: ESRI 2016
 Critical Habitat: USFWS
 Steelhead habitat: based on Boughton & Goslin 2006
 Fish Passage: CAFWS

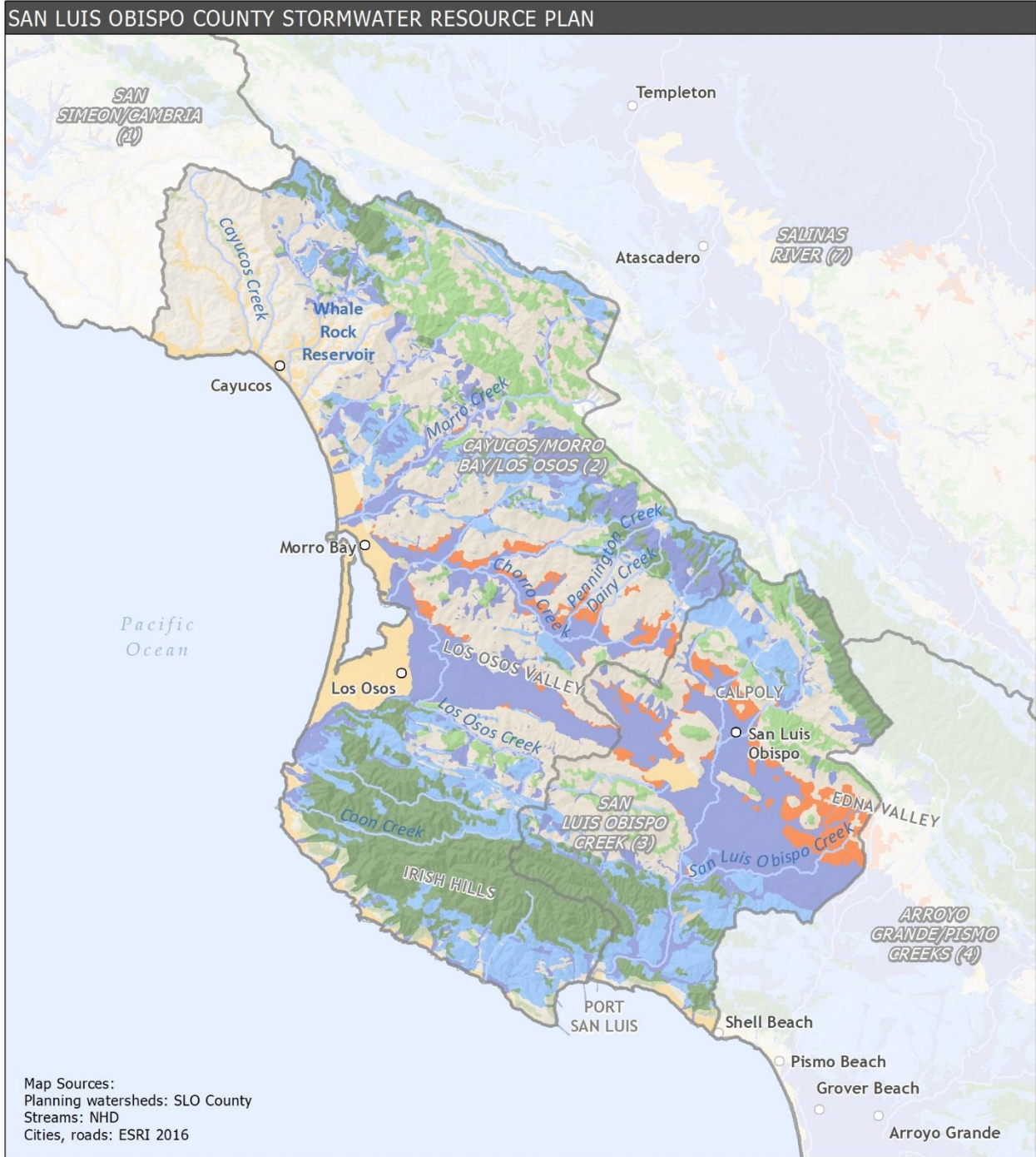
Fish Habitat: Cayucos/Morro Bay/Los Osos & San Luis Obispo Creek (WG 2 & 3)

- Tidewater goby critical habitat
- Potential steelhead migratory channel
- Potential steelhead rearing habitat
- Watershed Group
- Stream
- Natural Partial Barrier
- Natural Total Barrier
- Partial Barrier
- Total Barrier

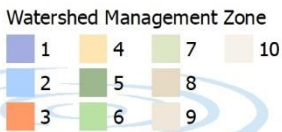




Map Location





Watershed Management Zones: Cayucos/Morro Bay/Los Osos & San Luis Obispo Creek (WG 2 & 3)



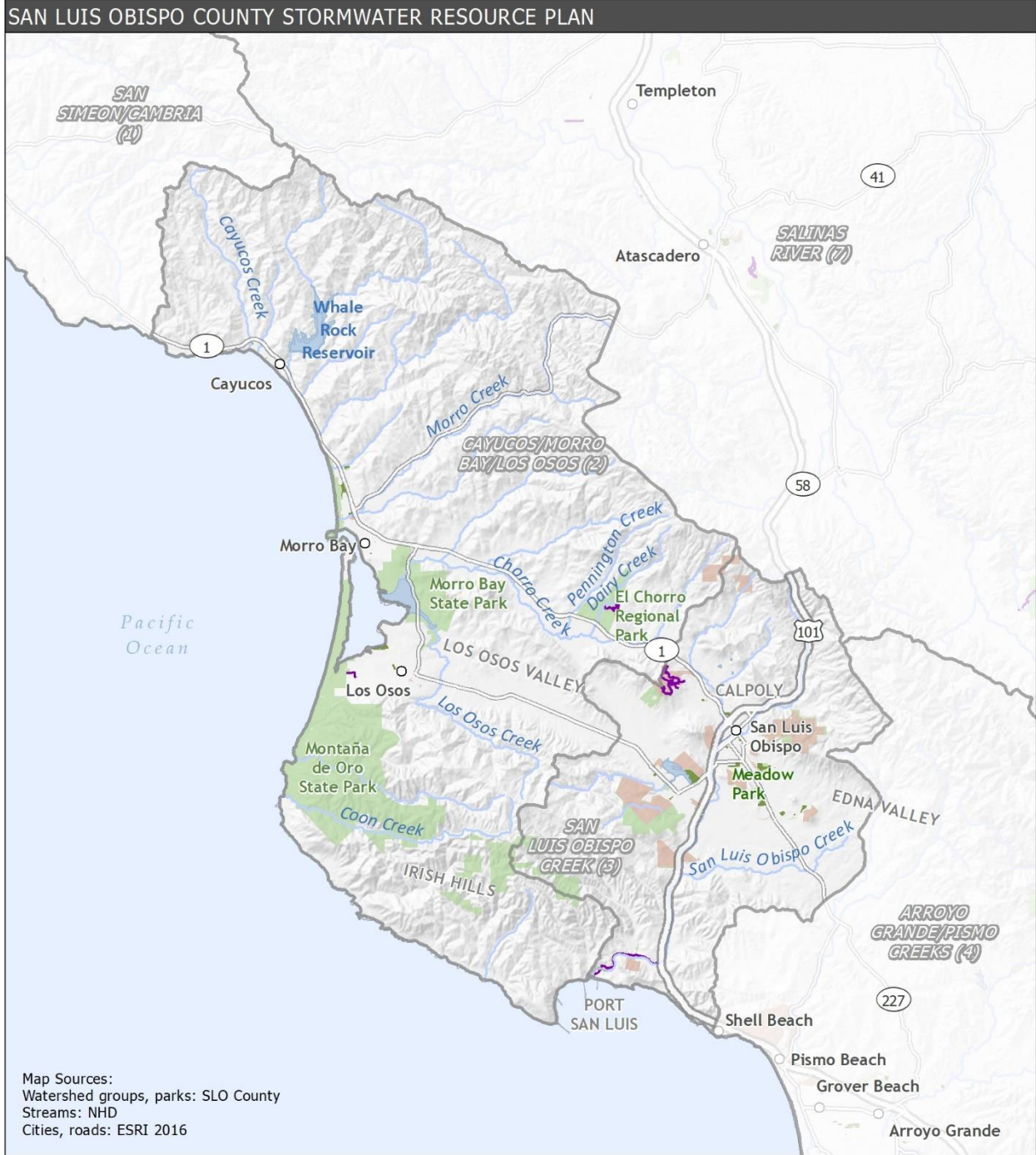
 Watershed Group
 Stream



Stillwater Sciences

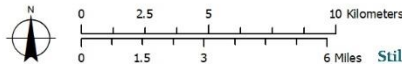
Map Location





Parks & Open Space: Cayucos/Morro Bay/Los Osos & San Luis Obispo Creek (WG 2 & 3)

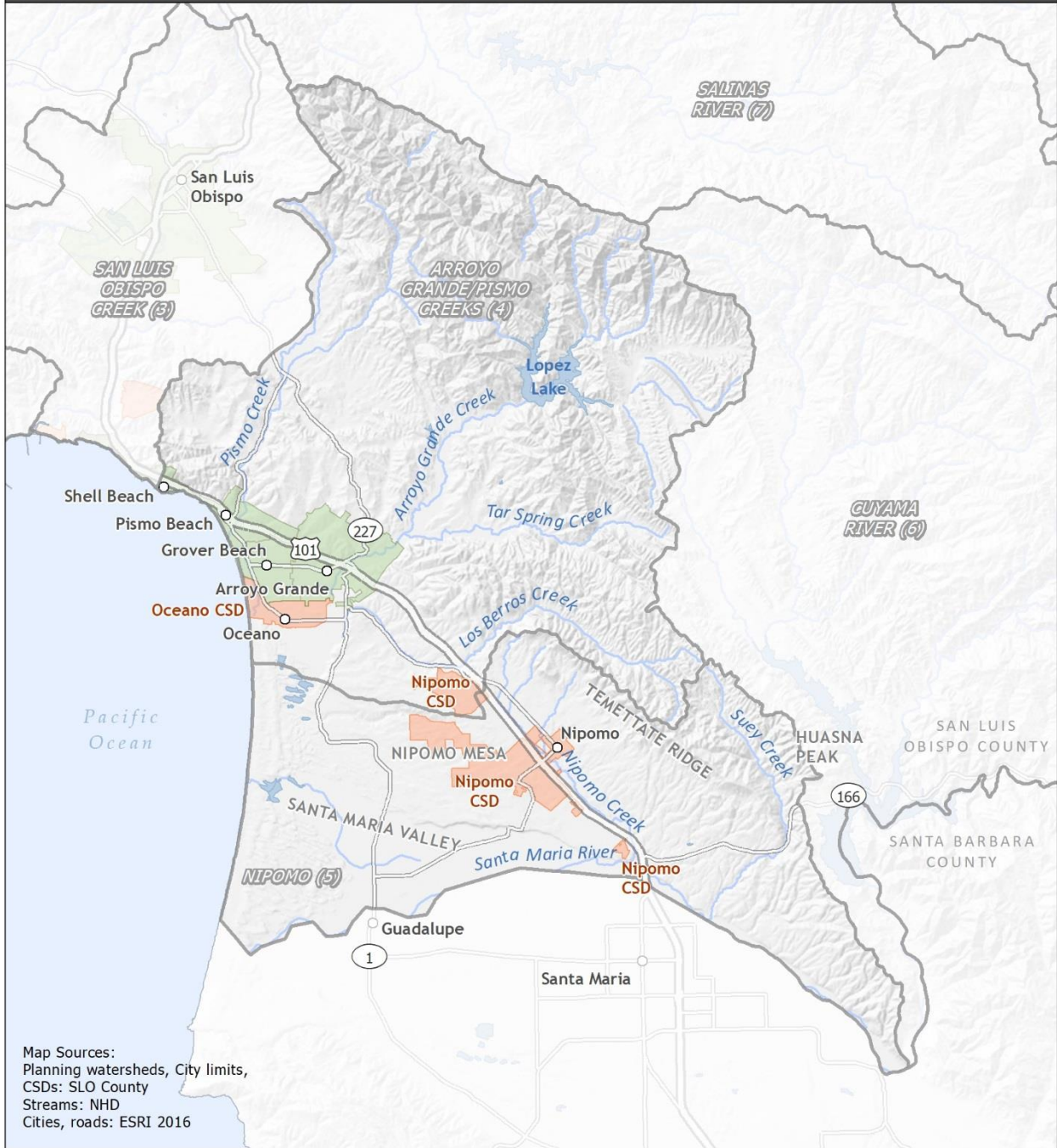
- County trail
- Open space
- Community park
- County park
- Watershed Group
- Stream



Map Location



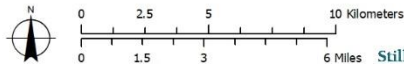
SAN LUIS OBISPO COUNTY STORMWATER RESOURCE PLAN



Map Sources:
 Planning watersheds, City limits,
 CSDs: SLO County
 Streams: NHD
 Cities, roads: ESRI 2016

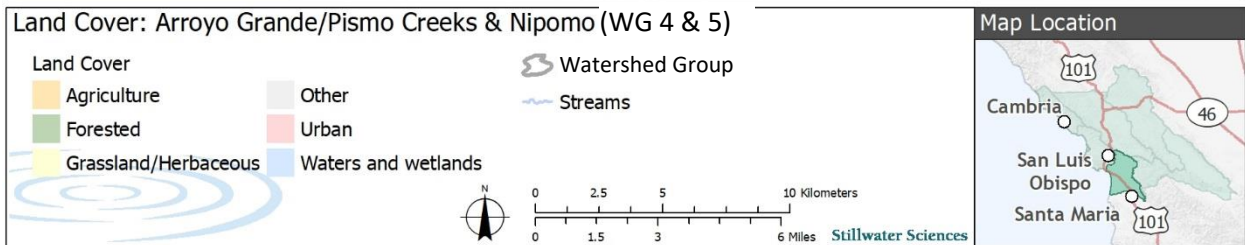
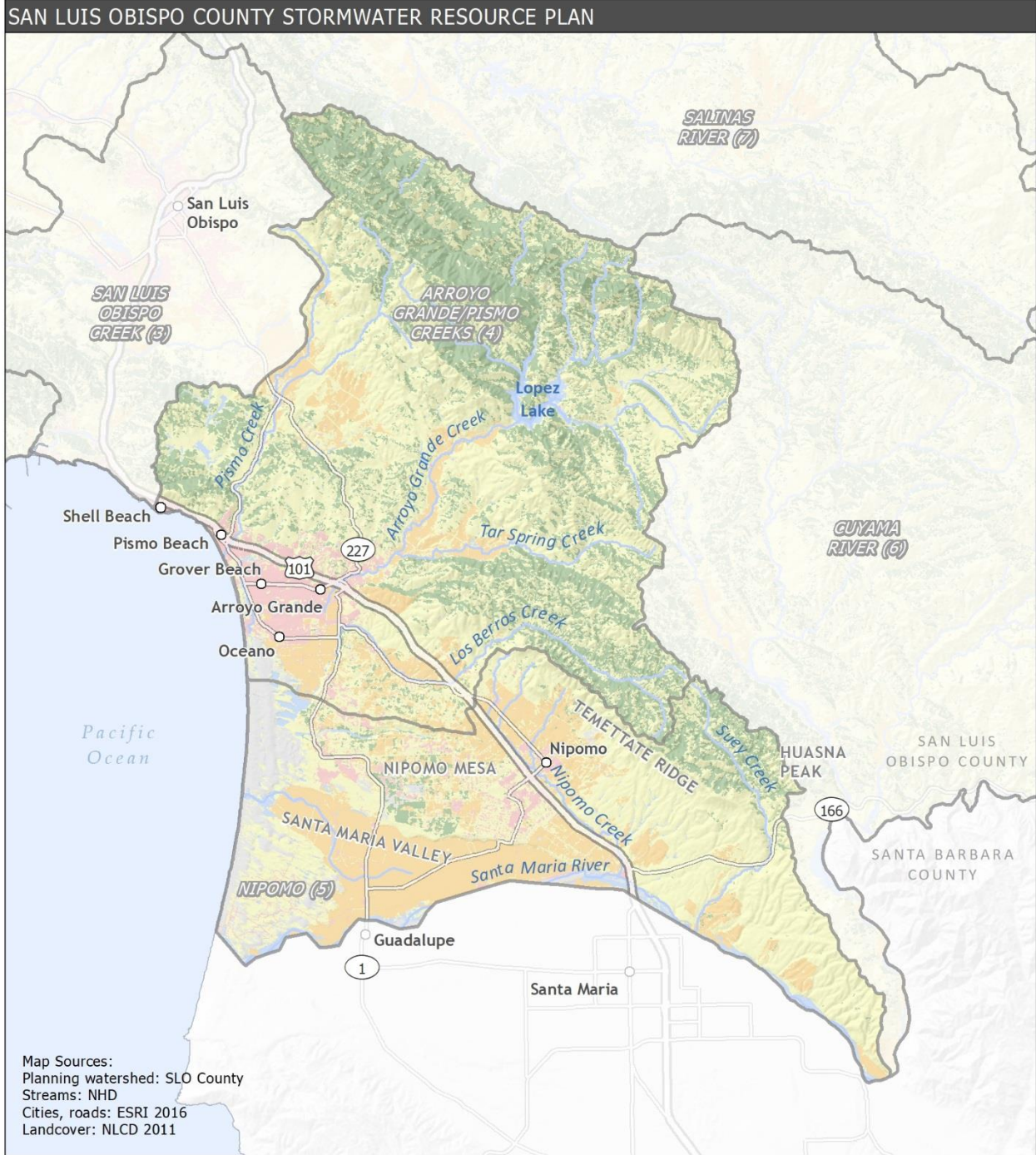
Municipal Services: Arroyo Grande/Pismo Creeks & Nipomo (WG 4 & 5)

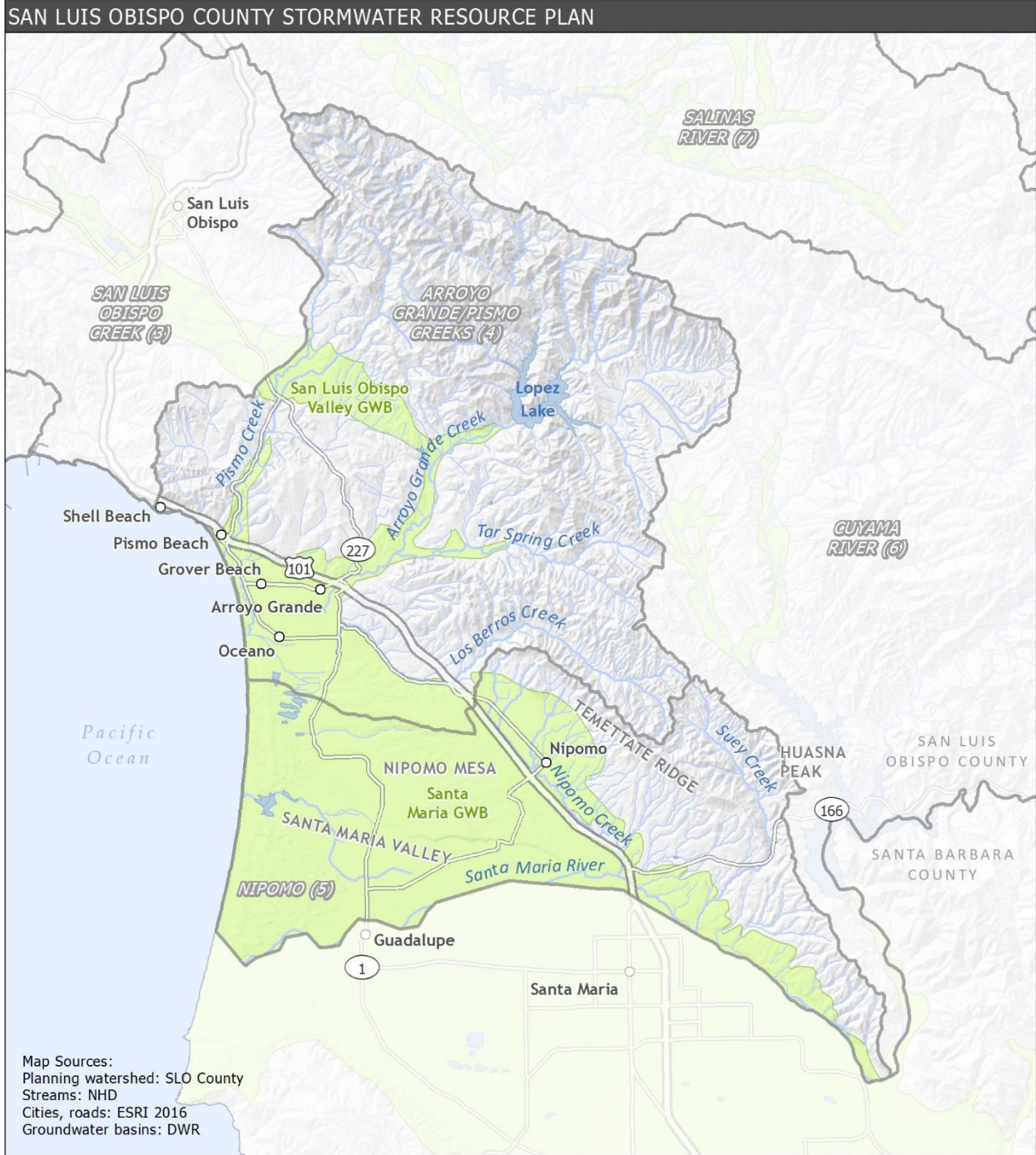
- City Limits
- Community Service District
- Watershed Group
- Stream






Map Location

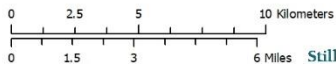






Hydrology: Arroyo Grande/Pismo Creeks & Nipomo (WG 4 & 5)

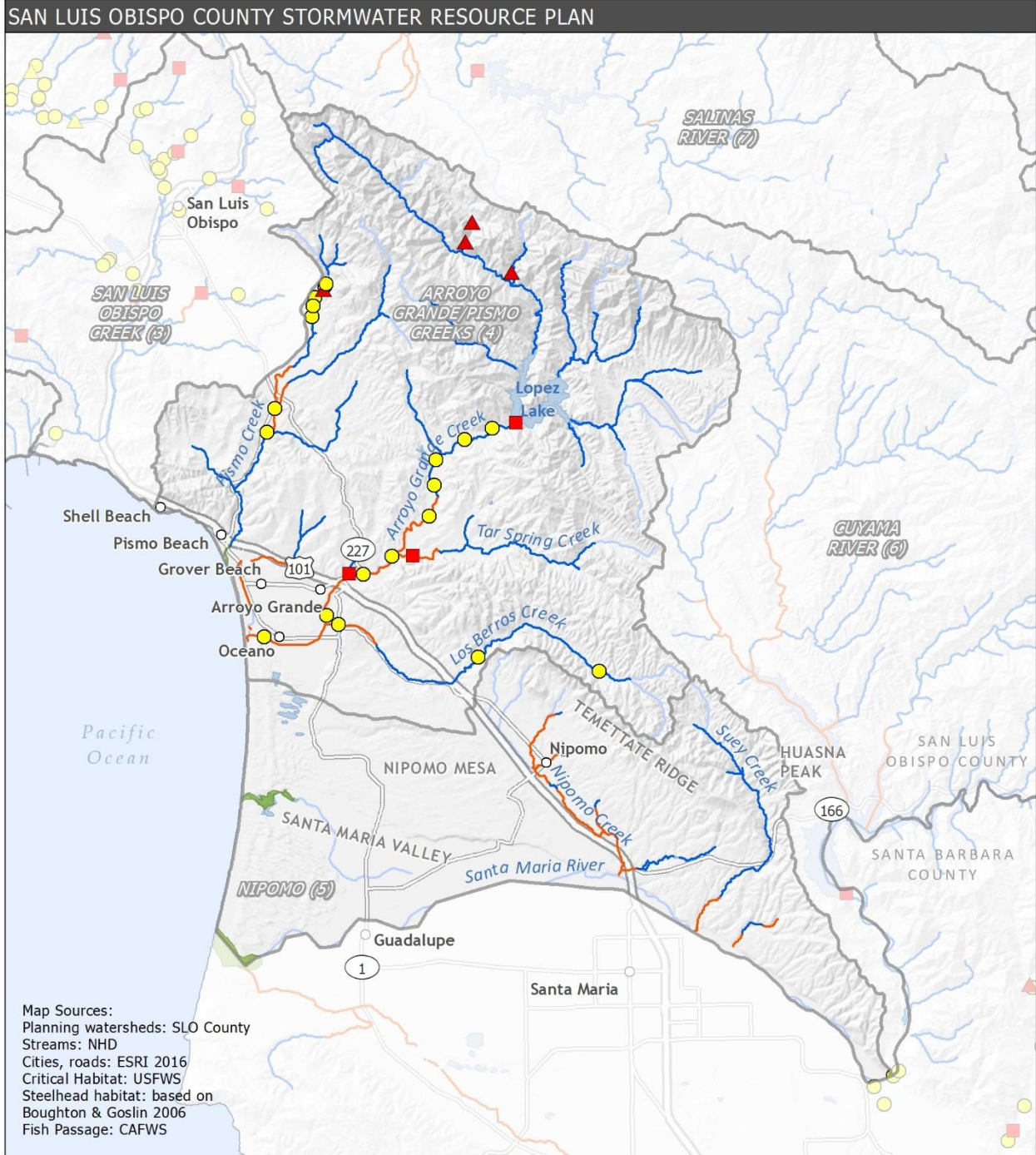
-  Groundwater basin (GWB)
-  Watershed Group
-  Stream



Stillwater Sciences

Map Location





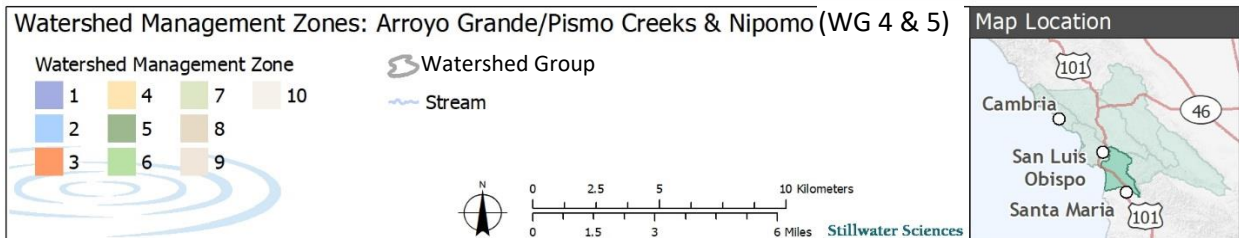
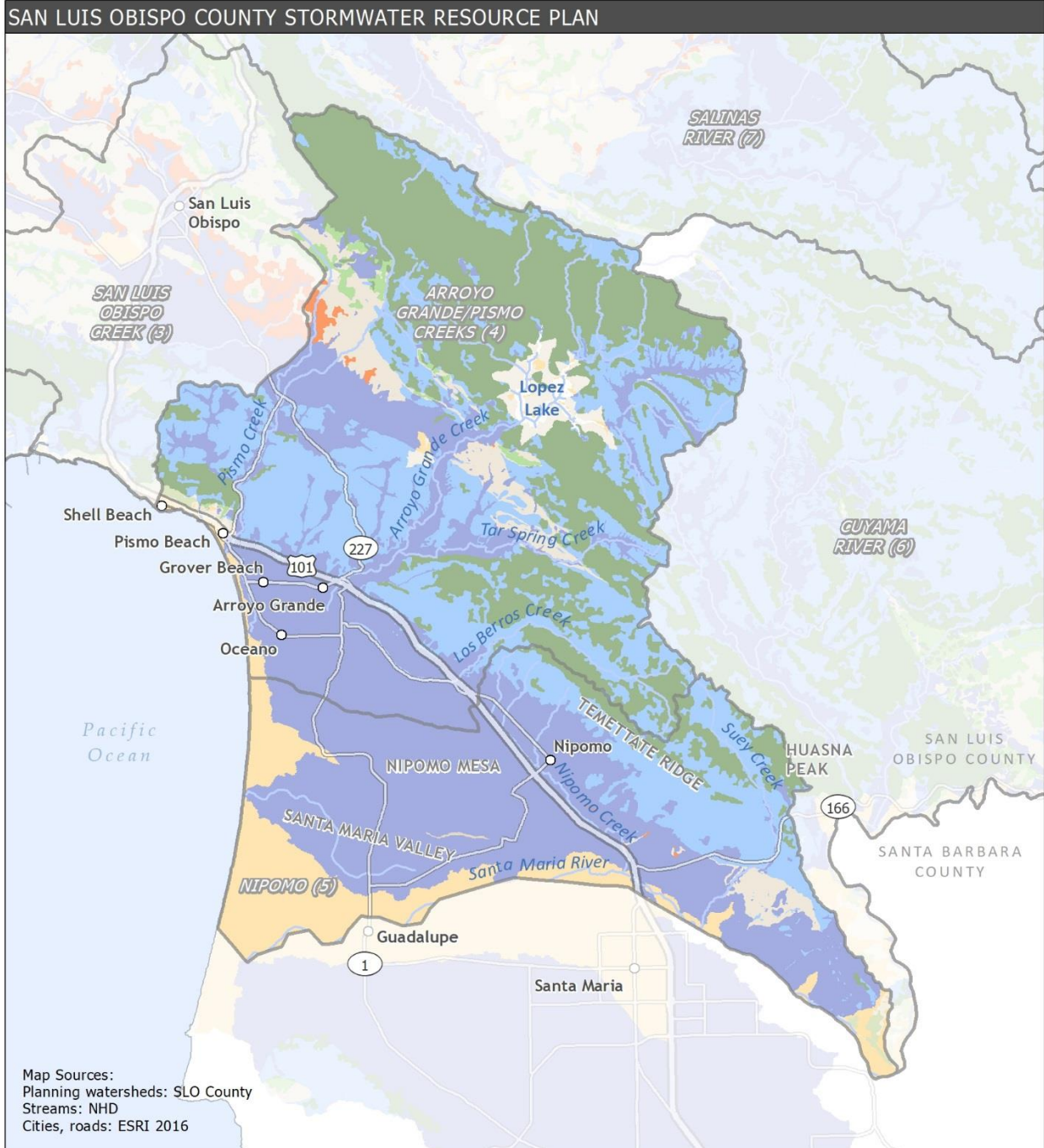
Fish Habitat: Arroyo Grande/Pismo Creeks & Nipomo (WG 4 & 5)

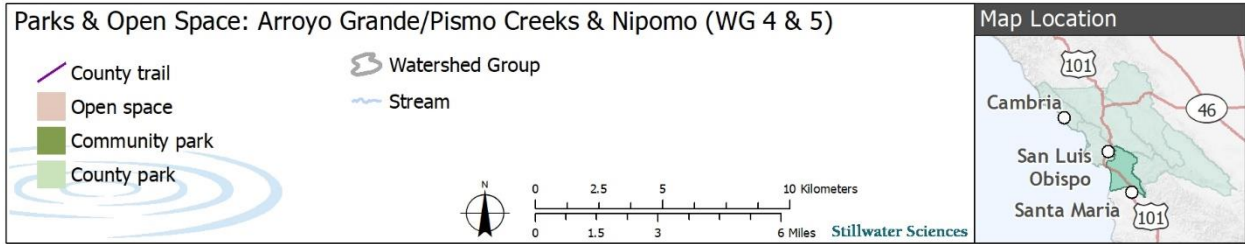
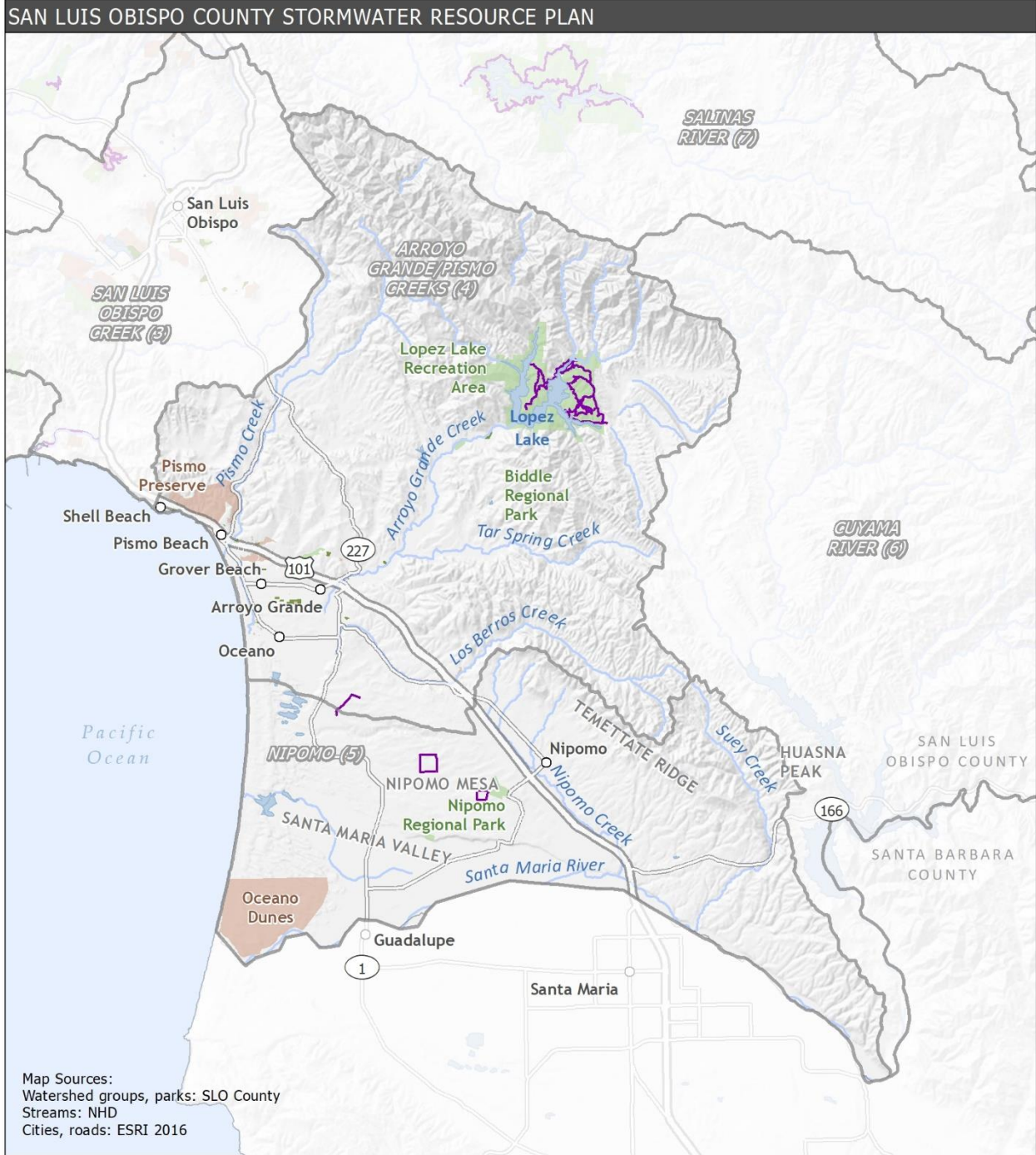
- Tidewater goby critical habitat
- ~ Potential steelhead migratory channel
- ~ Potential steelhead rearing habitat
- ~ Watershed Group
- ~ Stream
- ▲ Natural Partial Barrier
- ▲ Natural Total Barrier
- Partial Barrier
- Total Barrier

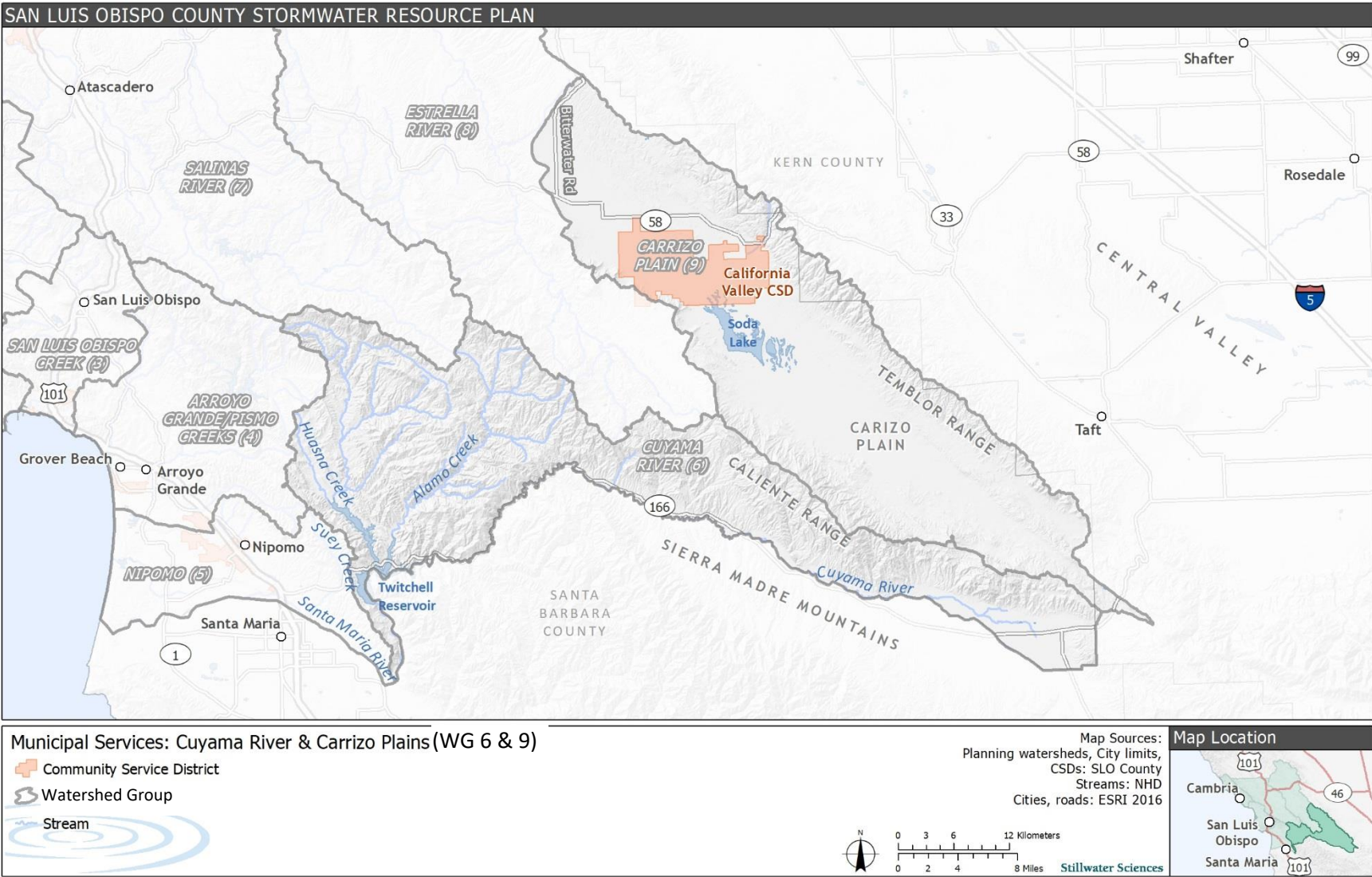


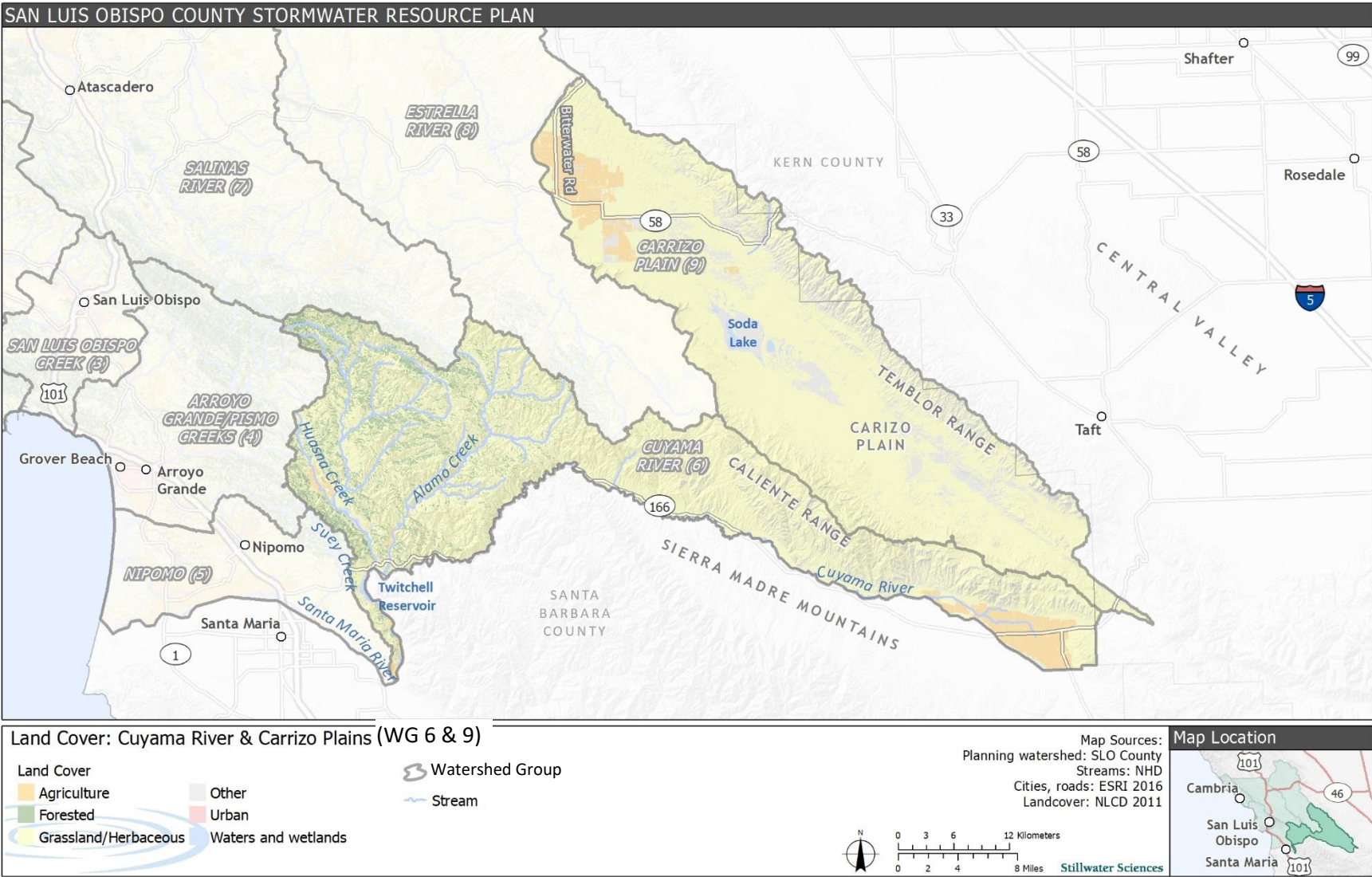
Map Location

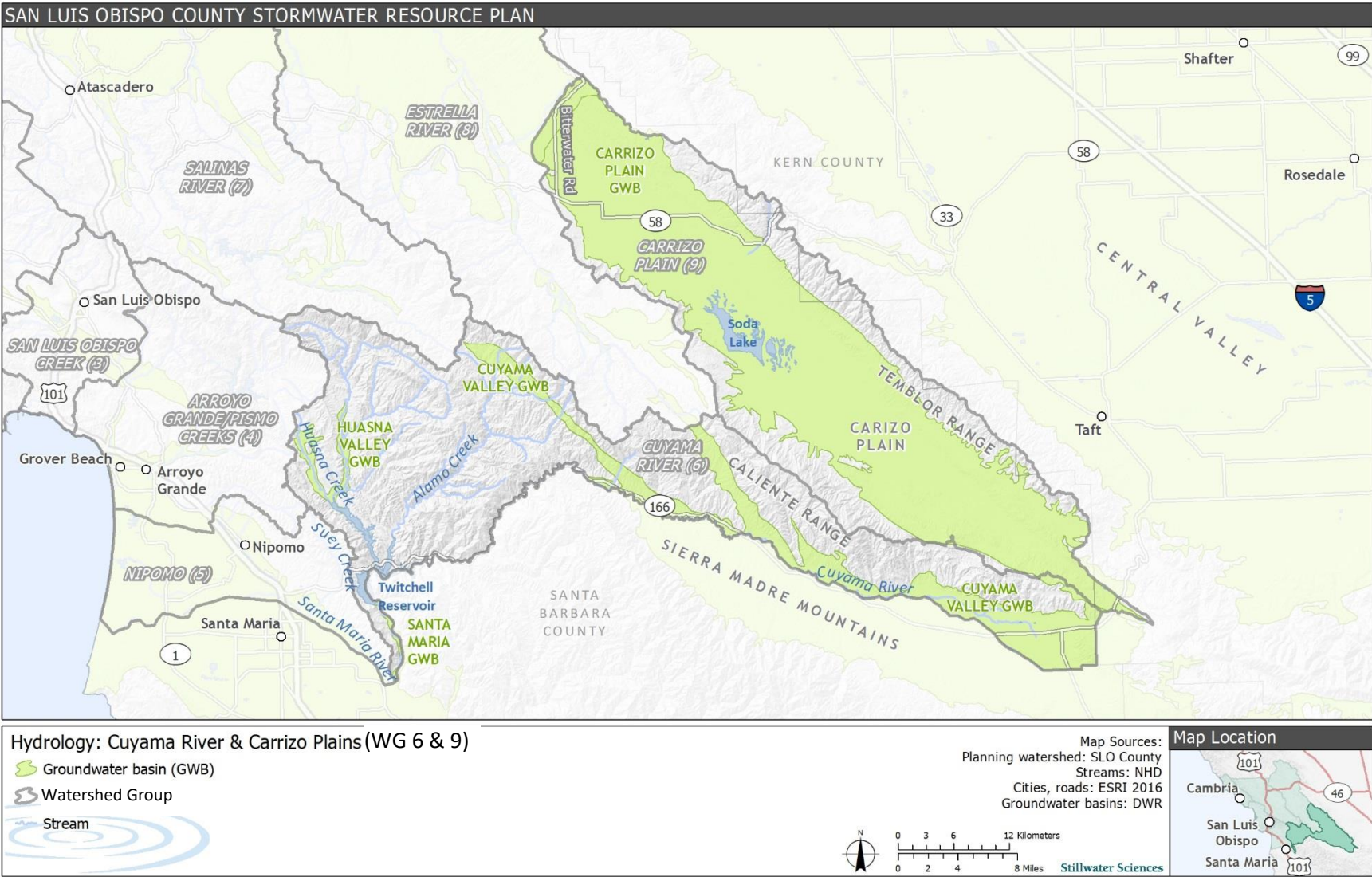


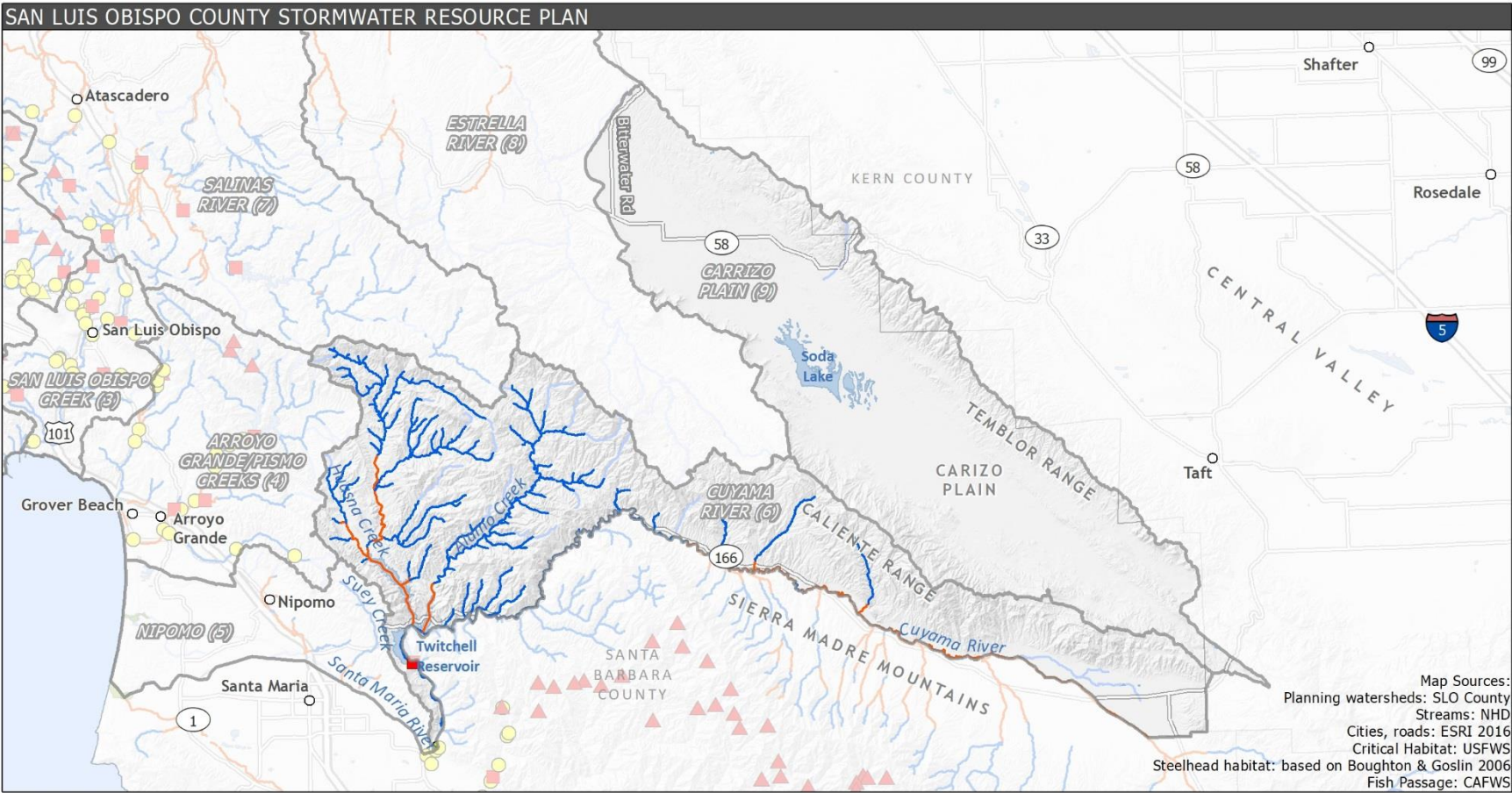








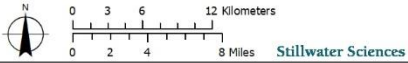


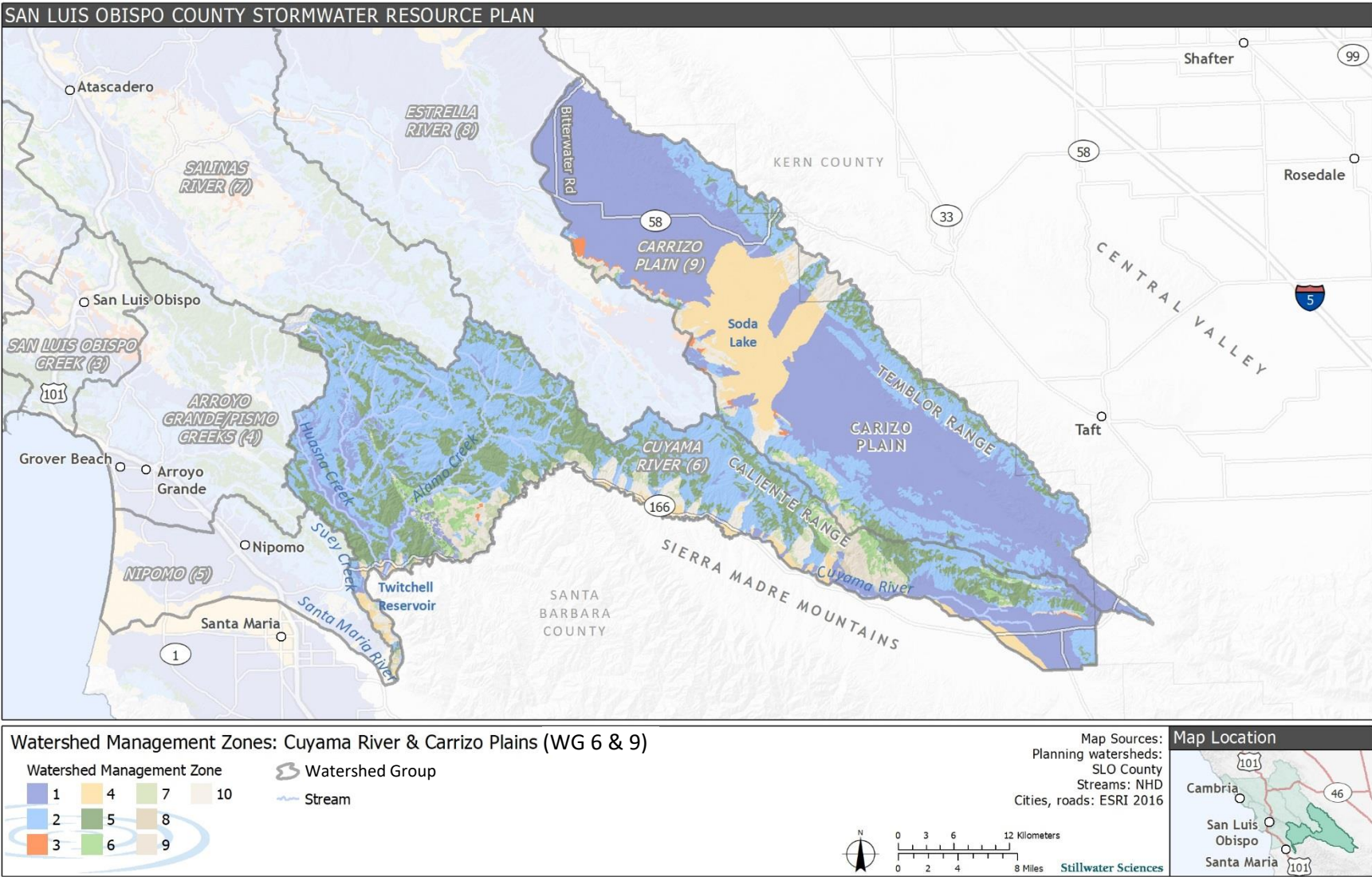


Map Sources:
 Planning watersheds: SLO County
 Streams: NHD
 Cities, roads: ESRI 2016
 Critical Habitat: USFWS
 Steelhead habitat: based on Boughton & Goslin 2006
 Fish Passage: CAFWS

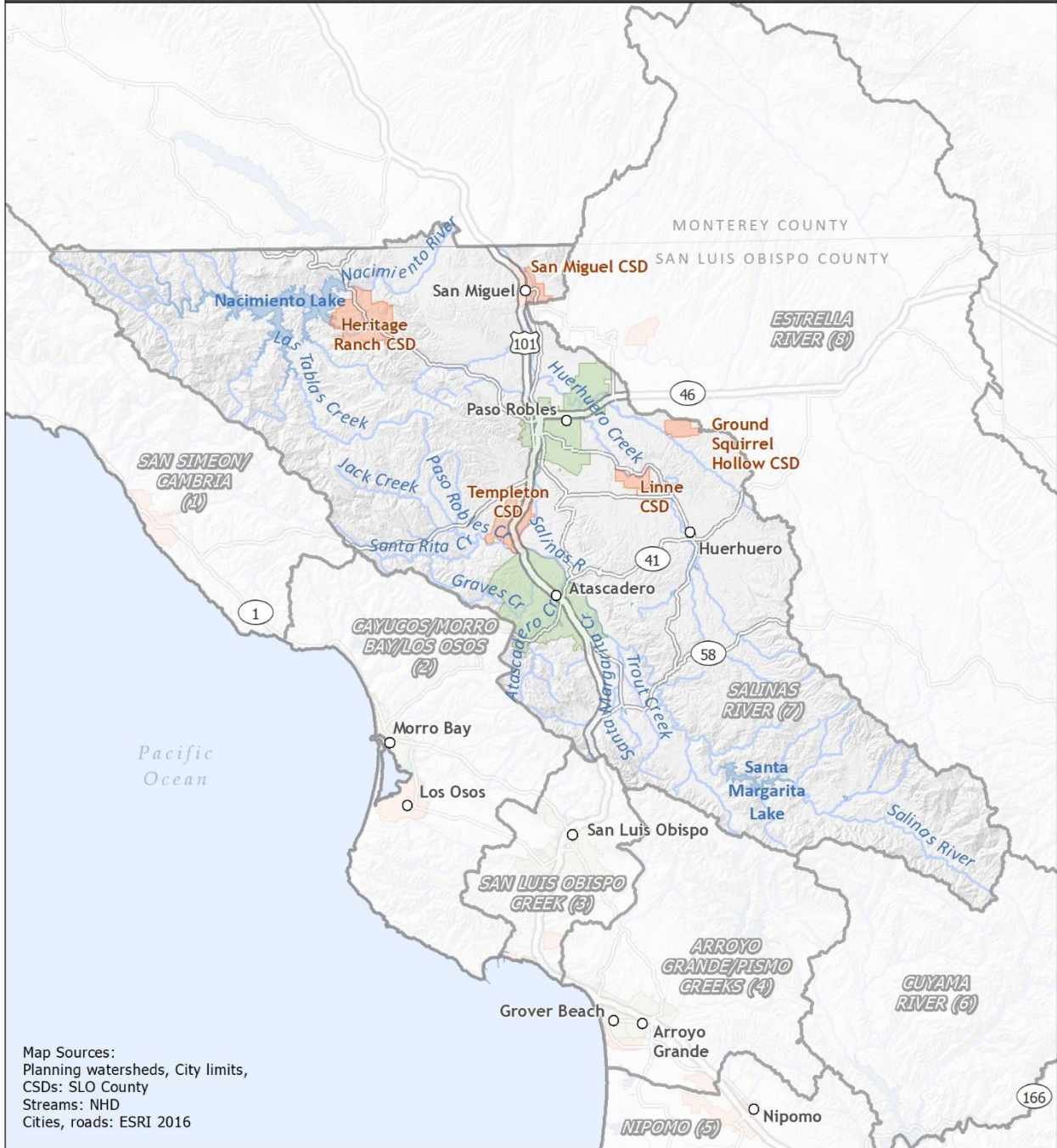
Fish Habitat: Cuyama River & Carrizo Plains (WG 6 & 9)

- Tidewater goby critical habitat
- Potential steelhead migratory channel
- Potential steelhead rearing habitat
- Watershed Group
- Stream
- Natural Partial Barrier
- Natural Total Barrier
- Partial Barrier
- Total Barrier

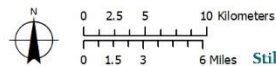




SAN LUIS OBISPO COUNTY STORMWATER RESOURCE PLAN



Municipal Services: Salinas River (WG 7)



Stillwater Sciences

Map Location



SAN LUIS OBISPO COUNTY STORMWATER RESOURCE PLAN

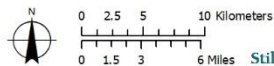


Map Sources:
 Planning watershed: SLO County
 Streams: NHD
 Cities, roads: ESRI 2016
 Landcover: NLCD 2011

Land Cover: Salinas River (WG 7)

- | | |
|----------------------|---------------------|
| Land Cover | |
| Agriculture | Other |
| Forested | Urban |
| Grassland/Herbaceous | Waters and wetlands |

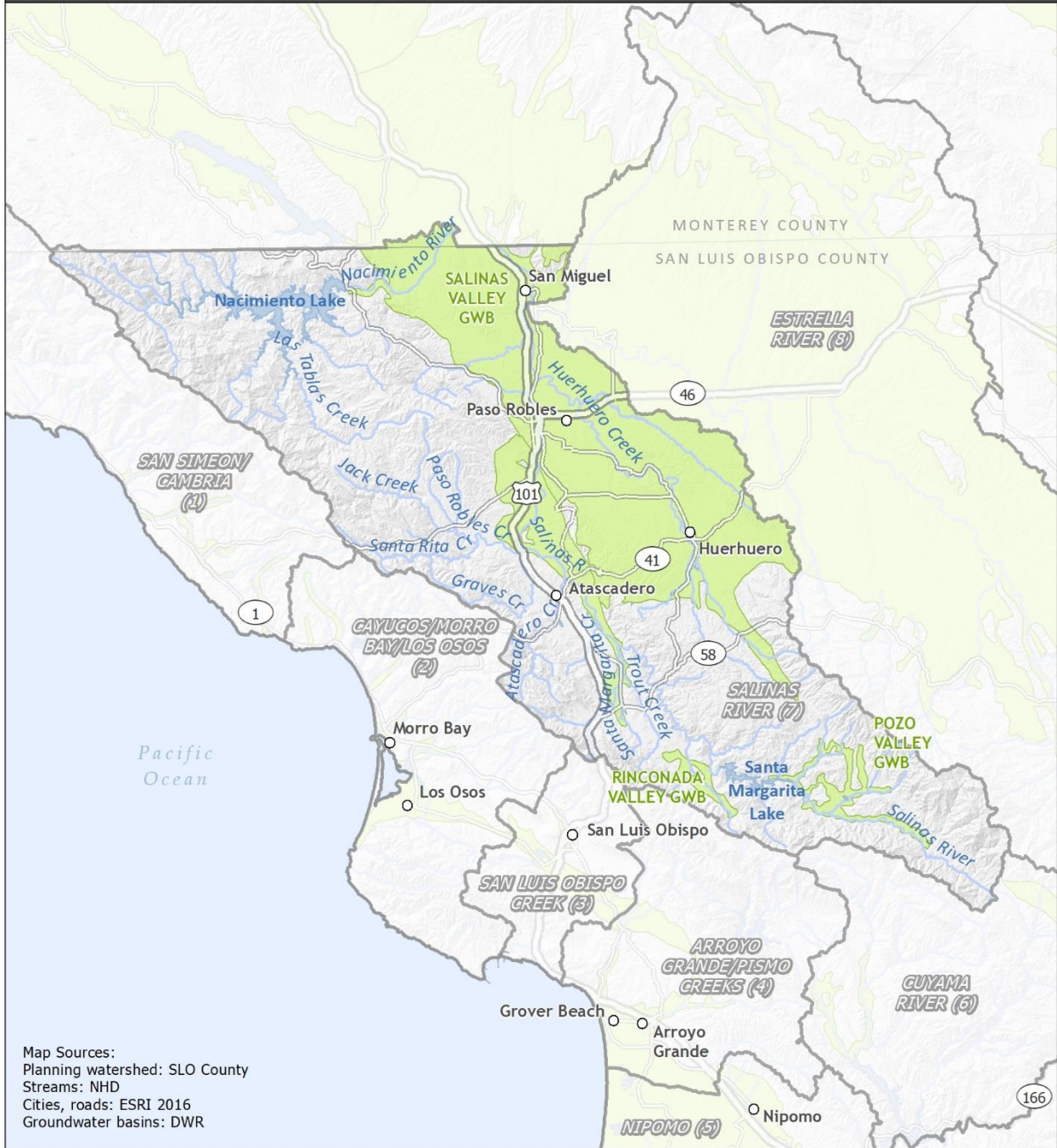
- Watershed Group
- Stream



Map Location

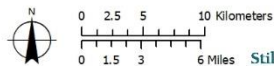


SAN LUIS OBISPO COUNTY STORMWATER RESOURCE PLAN



Hydrology: Salinas River (WG 7)

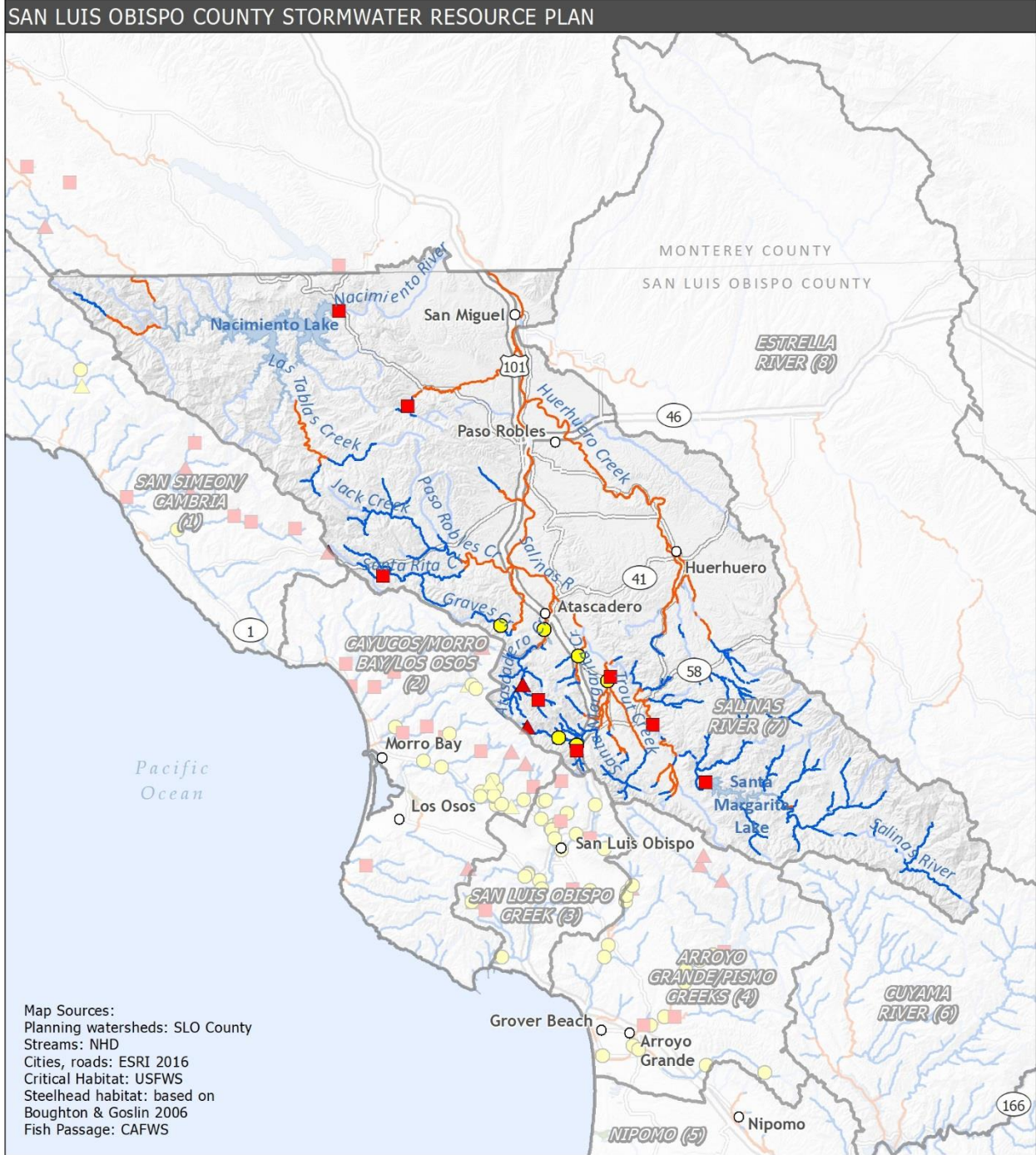
- Groundwater basin (GWB)
- Watershed Group
- Stream



Stillwater Sciences

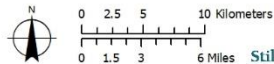
Map Location





Fish Habitat: Salinas River (WG 7)

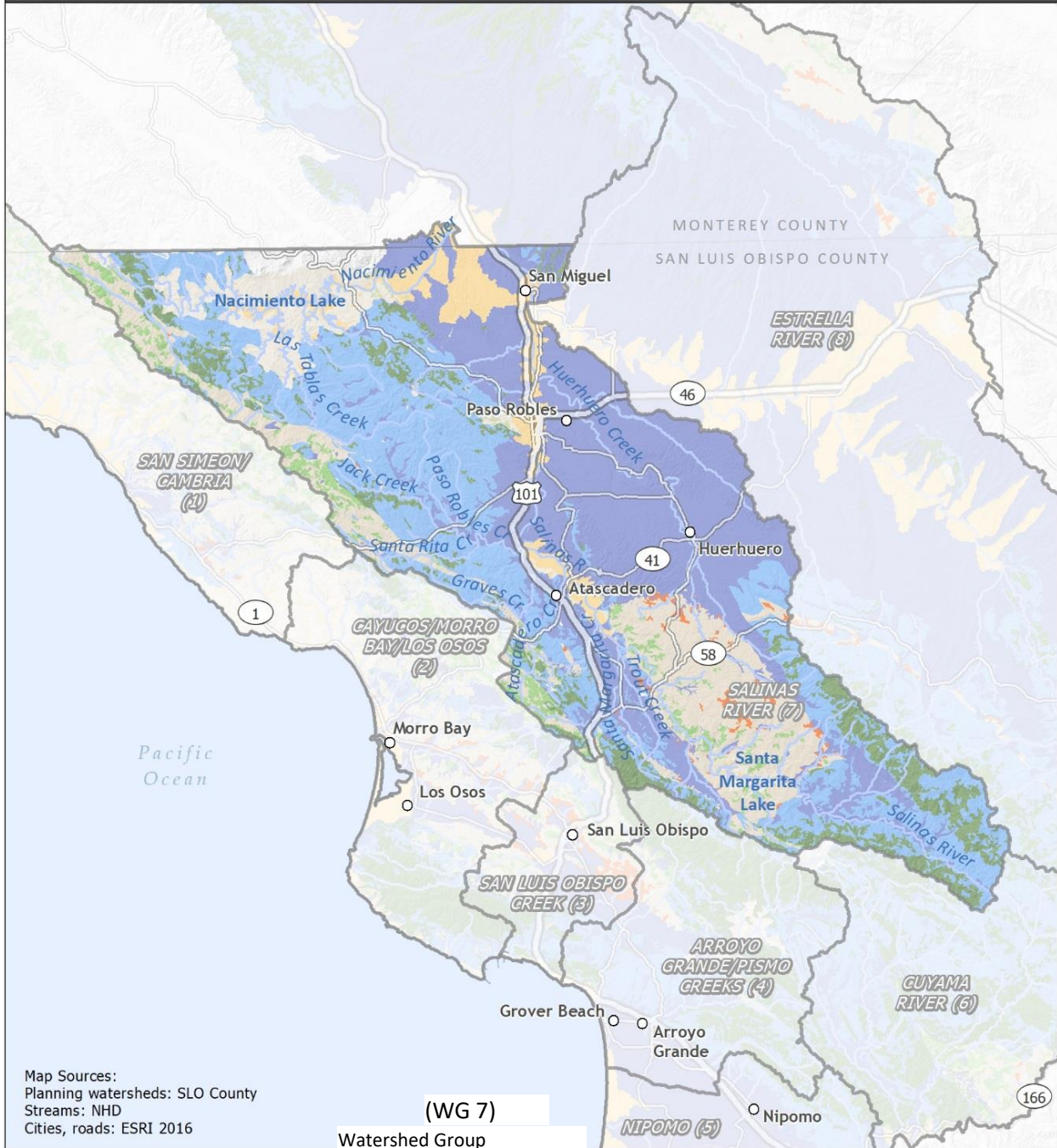
- Tidewater goby critical habitat
- Potential steelhead migratory channel
- Potential steelhead rearing habitat
- Watershed Group
- Stream
- Natural Partial Barrier
- Natural Total Barrier
- Partial Barrier
- Total Barrier



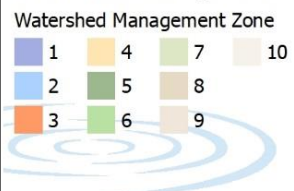
Map Location



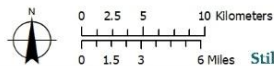
SAN LUIS OBISPO COUNTY STORMWATER RESOURCE PLAN



Watershed Management Zones: Salinas River (WPA 7)



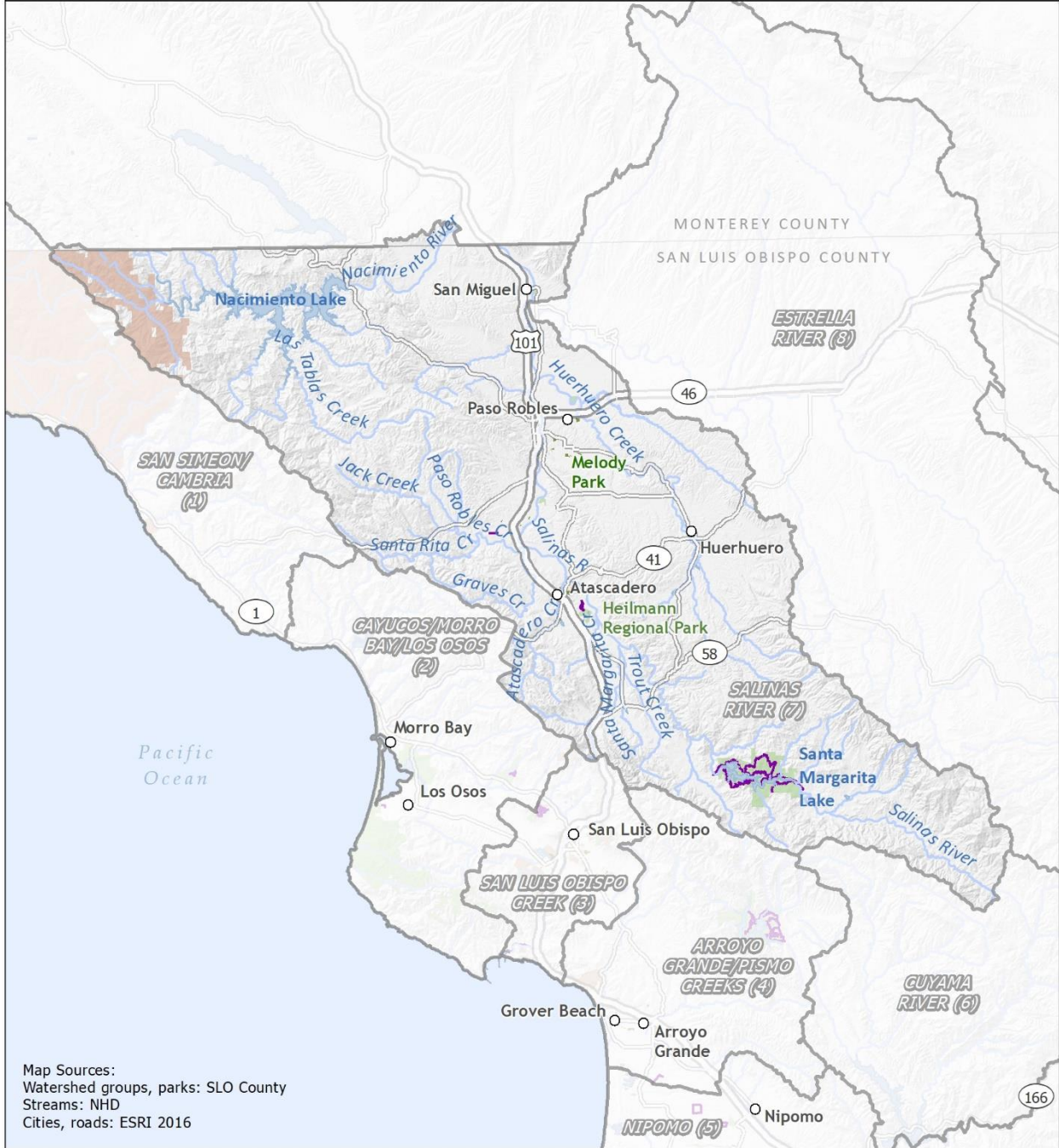
Planning Watershed
 Stream



Map Location

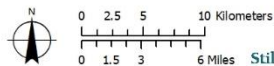


SAN LUIS OBISPO COUNTY STORMWATER RESOURCE PLAN



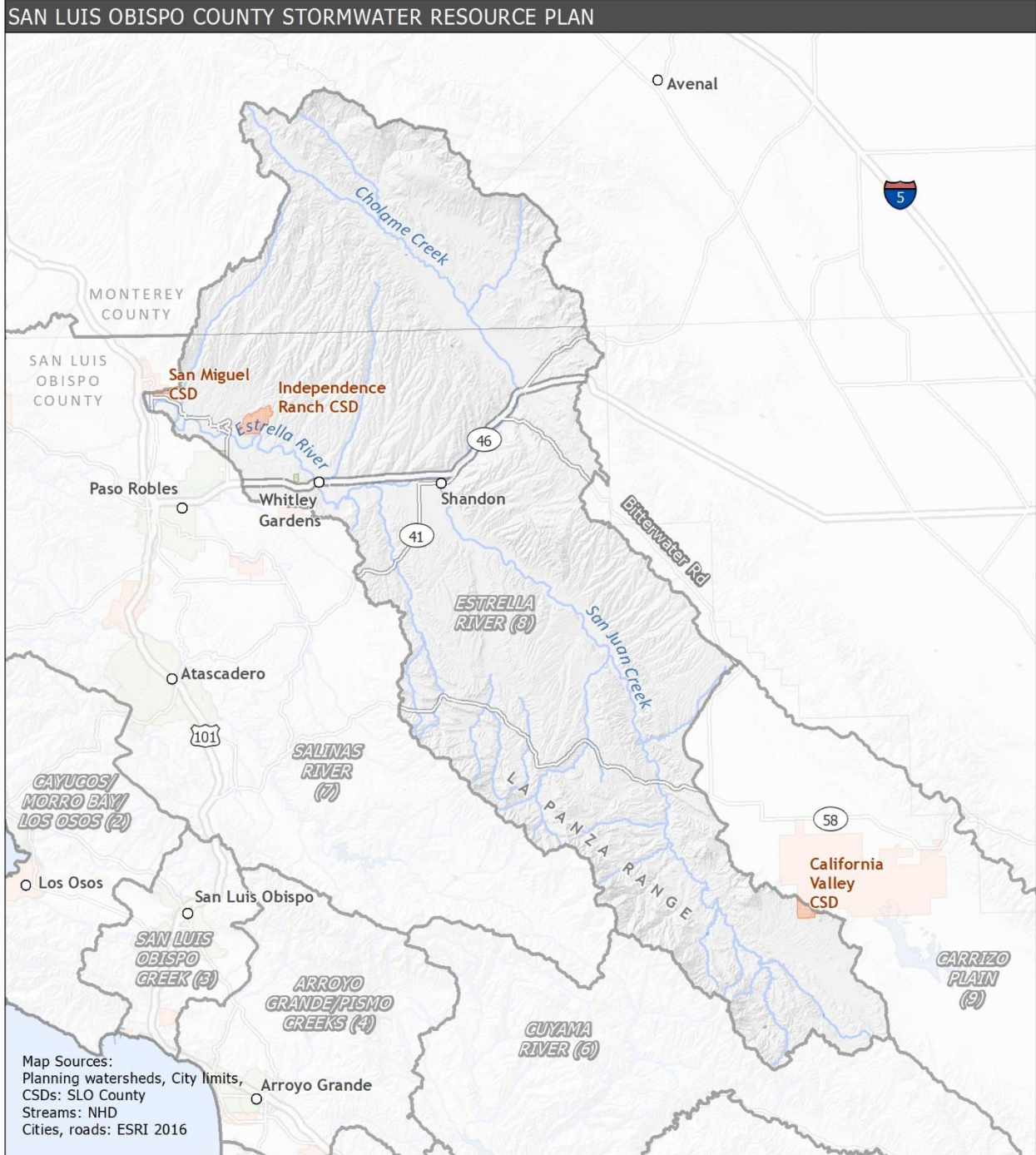
Parks & Open Space: Salinas River (WG 7)

- County trail
- Open space
- Community park
- County park
- Watershed Group
- Stream



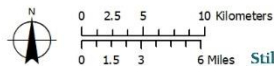
Map Location





Municipal Services: Estrella River (WG 8)

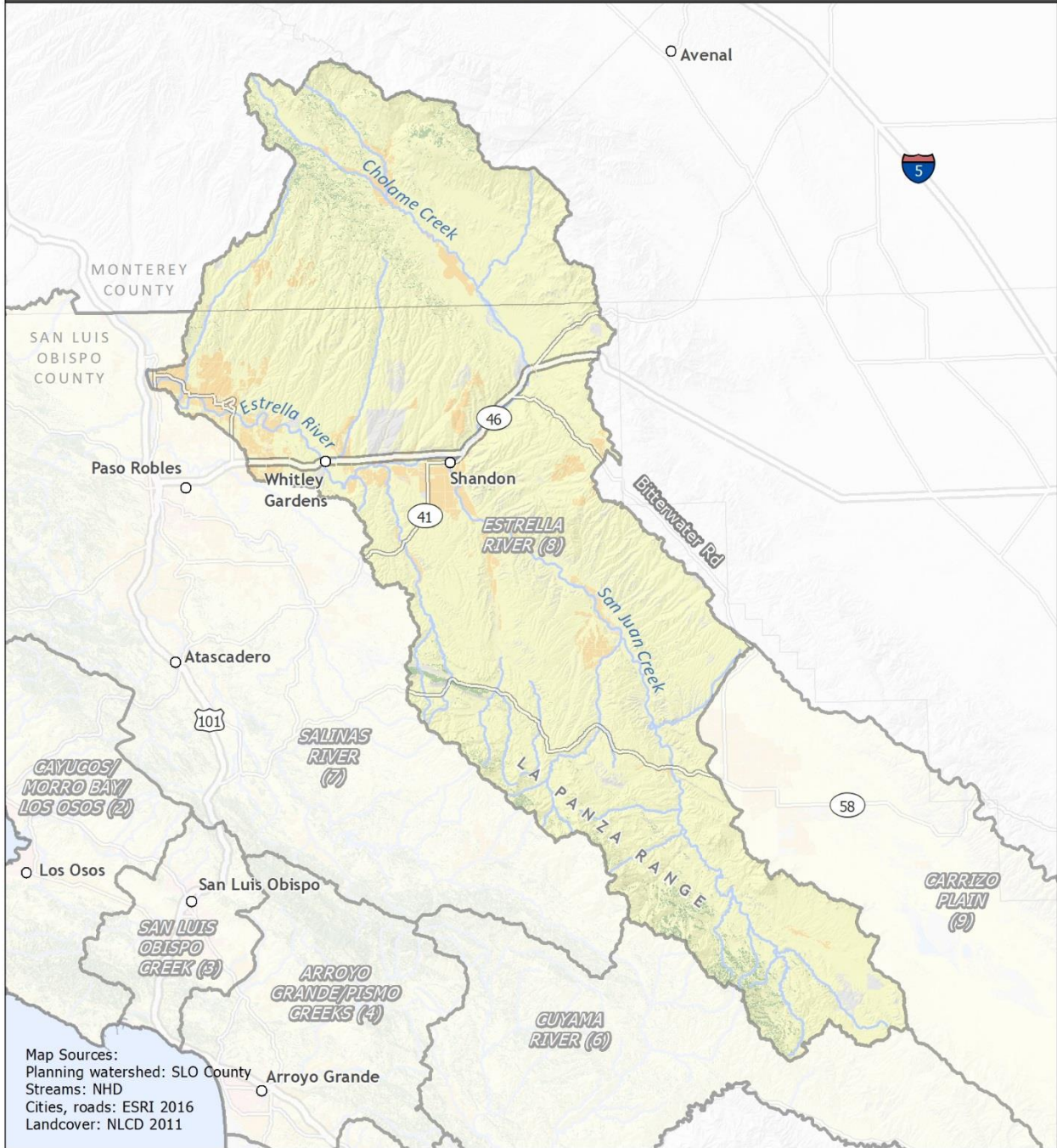
-  City Limits
-  Community Service District
-  Watershed Group
-  Stream



Map Location



SAN LUIS OBISPO COUNTY STORMWATER RESOURCE PLAN

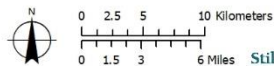


Map Sources:
 Planning watershed: SLO County Arroyo Grande
 Streams: NHD
 Cities, roads: ESRI 2016
 Landcover: NLCD 2011

Land Cover: Estrella River (WG 8)

- Land Cover
- Agriculture
 - Forested
 - Grassland/Herbaceous
 - Other
 - Urban
 - Waters and wetlands

- Watershed Group
- Stream

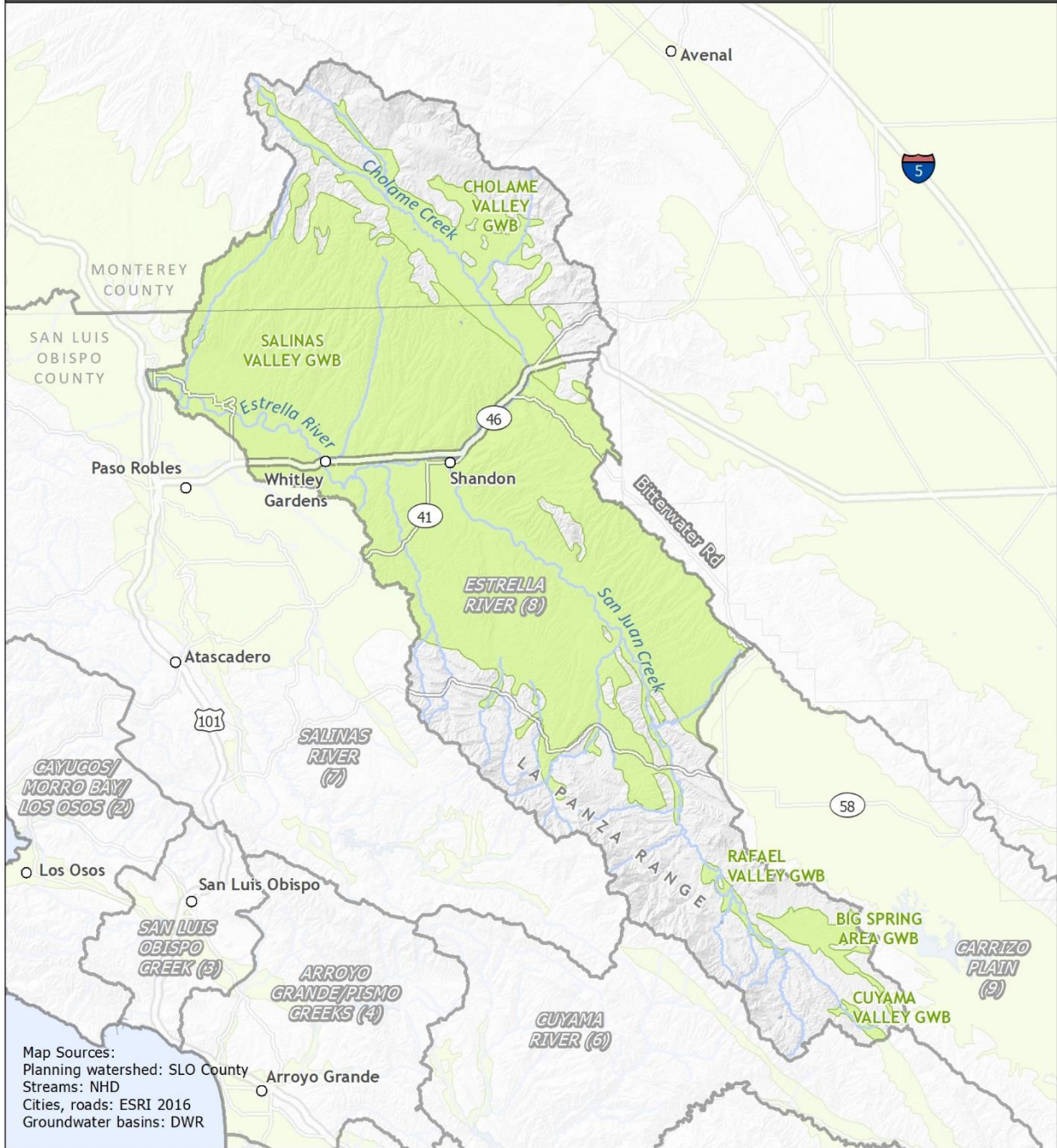


Stillwater Sciences

Map Location

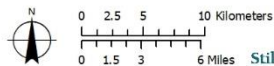


SAN LUIS OBISPO COUNTY STORMWATER RESOURCE PLAN



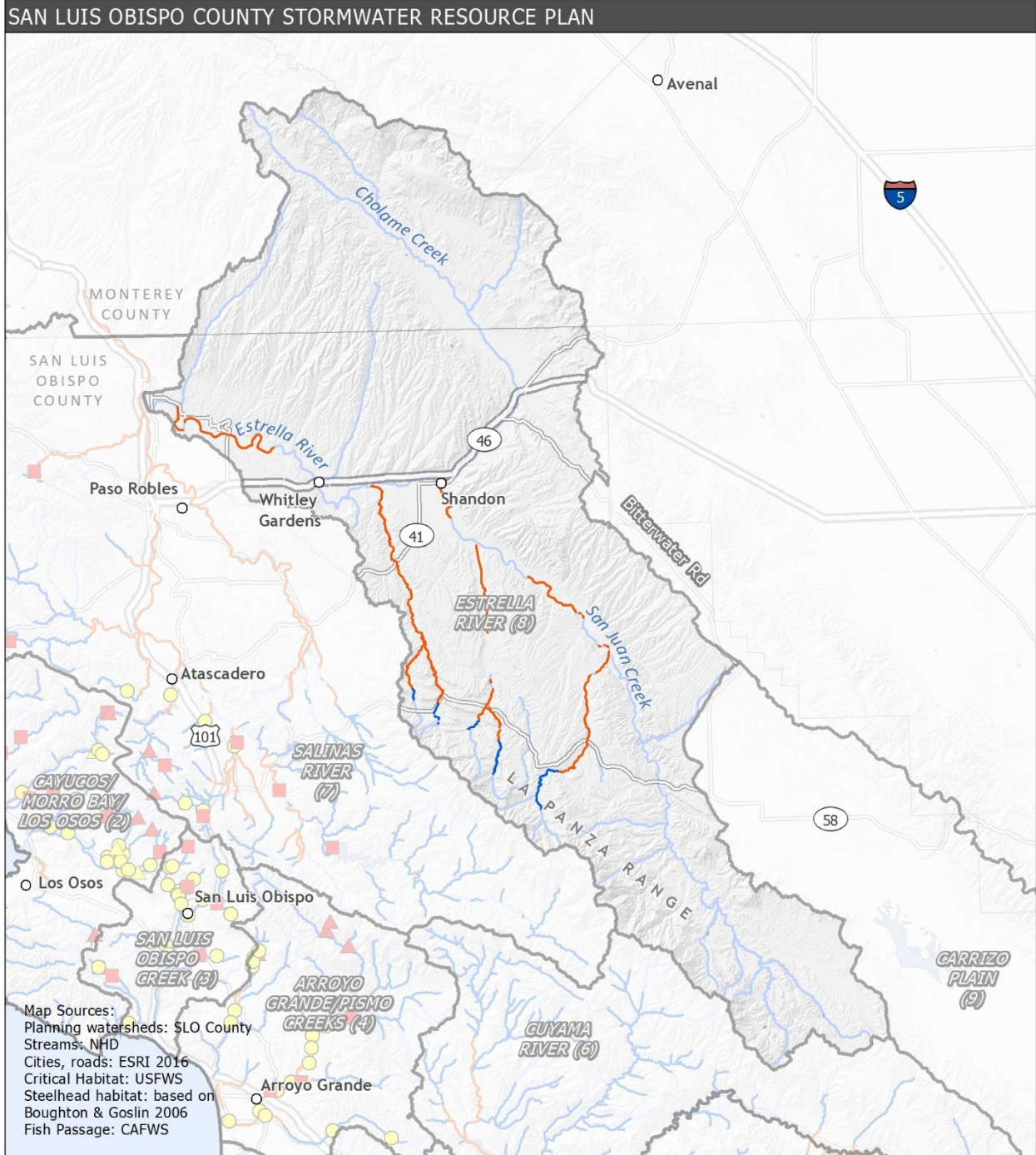
Hydrology: Estrella River (WG 8)

- Groundwater basin (GWB)
- Watershed Group
- Stream



Map Location

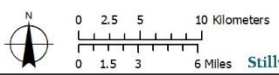




Map Sources:
 Planning watersheds: SLO County
 Streams: NHD
 Cities, roads: ESRI 2016
 Critical Habitat: USFWS
 Steelhead habitat: based on Boughton & Goslin 2006
 Fish Passage: CAFWS

Fish Habitat: Estrella River (WG 8)

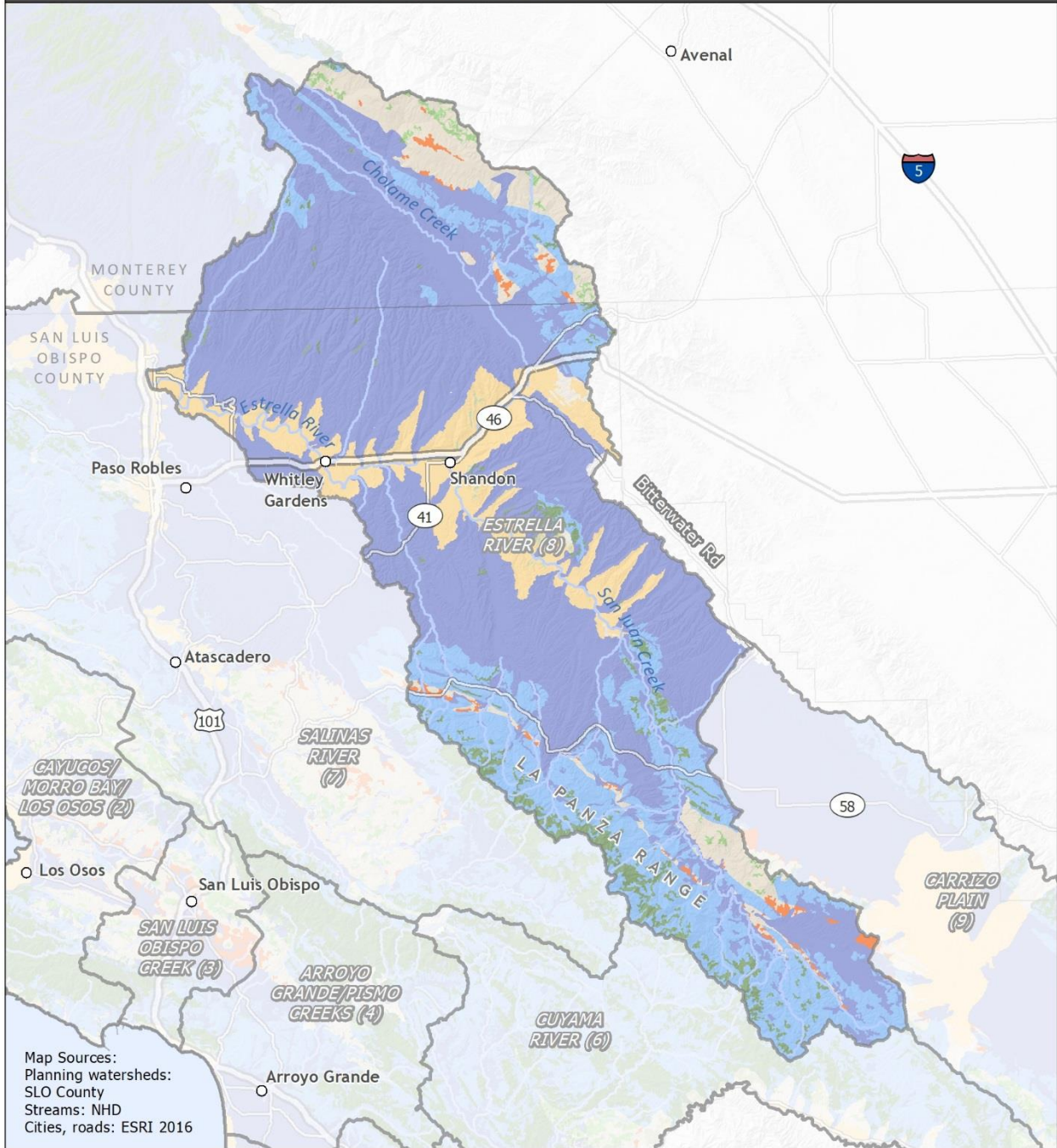
- Tidewater goby critical habitat
- ~ Potential steelhead migratory channel
- ~ Potential steelhead rearing habitat
- Watershed Group
- Stream
- ▲ Natural Partial Barrier
- ▲ Natural Total Barrier
- Partial Barrier
- Total Barrier



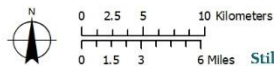
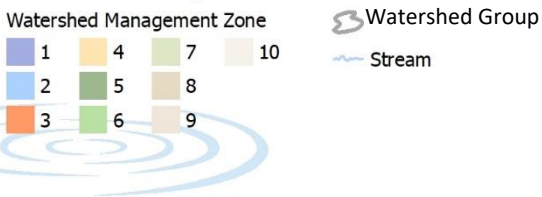
Map Location



SAN LUIS OBISPO COUNTY STORMWATER RESOURCE PLAN



Watershed Management Zones: Estrella River (WG 8)



Stillwater Sciences

Map Location

