



Oceano Community Services District

1655 Front Street, P. O. Box 599, Oceano, CA 93445 (805) 481-6730 FAX (805) 481-6836

Board of Supervisors
County of San Luis Obispo
County Government Center
San Luis Obispo, California 93408

February 8, 2012

RE: Sea Water Intrusion In Oceano

Dear Sirs,

The Oceano groundwater supply is not threatened with seawater intrusion. We are aware that there has been information provided to the public that Oceano's groundwater supply is threatened by seawater intrusion. The incident in 2009 exhibited characteristics of saltwater intrusion but it has since to be repeated and it also should be noted that the well in question was in great disrepair. This was corrected by the county maintenance crew and at no time since has it exhibited anymore characteristics of seawater intrusion.

At the time that this sentry well was tested, there were significant external contaminants. The Board at the time was directed by its contracted engineer to take a position that the event was actually a benefit because it would elevate the priority level in case of any state water contractor allocation cutbacks. This same engineer is on contract with several San Luis Obispo agencies to which this information has been exploited to their benefit.

We normally would have accepted this without comment, but the level of exploitation of this anomaly has reached critical mass and is being quoted from everything from commercial development, other agencies needs and willful suspensions of the truth.

Sincerely,

MATTHEW G. GUERRERO
President

RICHARD SEARCY
Director

LORI ANGELLO
Director

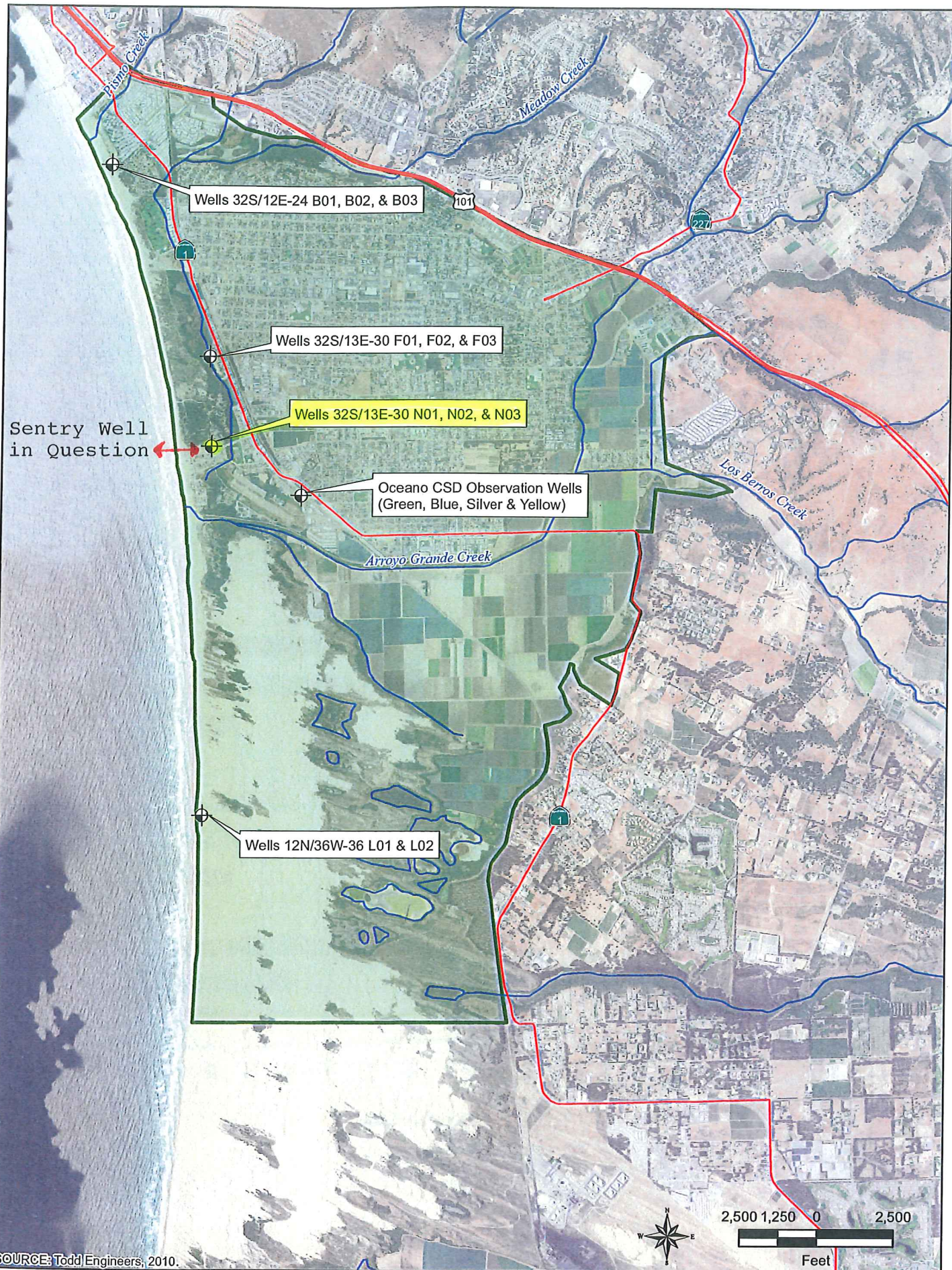
MARY LUCEY
Vice-President

Felma L. Hurdle

FELMA HURDLE
Director

TOM GEASLEN
Interim General Manager

attachments



SOURCE: Todd Engineers, 2010.

01-Mar-2011 Z:\Projects\104220_NCMA\Fig7 SentryWells.mxd RS

2010 Annual Monitoring Report
San Luis Obispo, California

Northern Cities Management Area

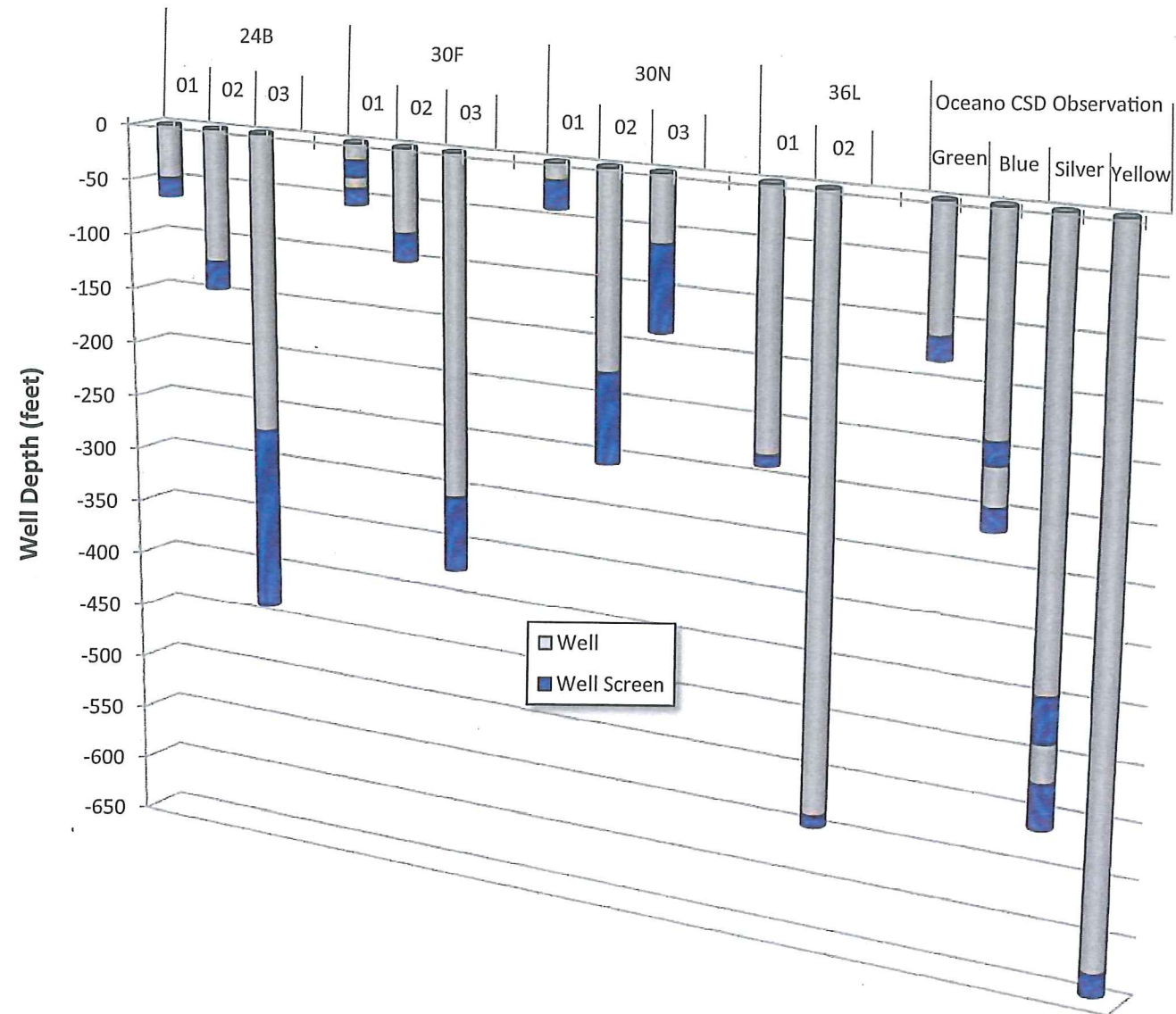


Location of Sentry Wells

APRIL 2011

FIGURE 7

Figure 8 - Depths of Sentry Wells



00-xxx-0000 Z:\GIS\Projects\...mxd XXX

Table 6b: Northern Cities Sentry Well Water Quality Data Summary

Well	Production Interval	Date	Depth to Water (feet)	Groundwater Elevation (feet NAVD)	Total Dissolved Solids (mg/L)	Chloride (mg/L)	Sodium (mg/L)
32S/13E-30F03	Screened from 305-372'	1/24/2011	12.67	10.64	650	46	36
		10/28/2010	NA	NA	650	46	37
		10/21/2010	6.62	16.69	NA	NA	NA
		7/26/2010	17.32	5.99	608	45	43.8
		4/27/2010	11.38	9.02	668	48	40.8
		1/28/2010	10.98	9.42	656	40	43.1
		10/19/2009	14.18	6.22	626	48	43.3
		8/19/2009	20.23	0.17	672	45	43.1
		5/12/2009	17.68	2.72	678	49	44.8
		3/27/1996	NA	NA	686	41	40
		6/7/1976	NA	NA	616	43	41
1/19/1966	NA	NA	642	69	49		
32S/13E-30N01	Screened from 15-40'	1/24/2011	8.18	7.35	870	180	100
		10/21/2010	9.99	5.54	890	190	120
		7/27/2010	8.97	6.56	917	200	130
		4/27/2010	6.14	7.36	808	150	130
		1/26/2010	4.90	8.60	902	210	155
		10/20/2009	6.53	7.00	828	200	159
		8/20/2009	6.71	6.82	835	160	150
		5/11/2009	6.03	7.50	960	180	175
32S/13E-30N03	Screened from 60-135'	1/24/2011	6.68	8.75	570	76	48
		10/21/2010	10.76	4.67	550	69	59
		7/27/2010	9.53	5.90	528	72	55.1
		4/27/2010	6.14	7.36	672	89	60.6
		1/26/2010	5.88	7.62	606	110	75.0
		10/20/2009	6.56	6.94	806	180	93.3
		8/20/2009	7.50	6.00	1,070	190	151
		5/12/2009	6.33	7.17	602	97	63.4
		3/27/1996	NA	NA	624	70	62
		6/7/1976	NA	NA	705	90	54
		1/21/1966	NA	NA	804	57	54
32S/13E-30N02	Screened from 175-255'	1/24/2011	3.67	11.76	1,050	50	60
		10/21/2010	10.42	5.01	1,040	48	52
		7/27/2010	10.02	5.41	777	57	67.6
		4/27/2010	5.26	8.27	800	93	71.9
		2/25/2010	1.72	11.78	1,000	48	71.4
		2/25/2010	1.72	11.78	1,010	74	76.9
		1/26/2010	3.72	9.78	970	50	74.2
		10/20/2009	7.38	6.12	2,080	690	274
		8/20/2009	11.94	1.56	1,350	500	199
		5/11/2009	6.98	6.52	1,290	170	129
		3/27/1996	NA	NA	1,050	50	71
		6/7/1976	NA	NA	1,093	48	62
		1/21/1966	NA	NA	1,069	54	71
12N/36W-36L01	Screened from 227-237'	1/24/2011	17.61	8.68	890	41	55
		10/21/2010	20.75	5.54	910	38	76
		7/27/2010	21.18	5.11	707	36	64.2
		4/26/2010	15.94	8.06	860	42	70.3
		10/21/2009	17.72	6.28	856	38	72.0
		8/20/2009	19.16	4.84	890	39	78.0
		5/11/2009	17.68	6.32	832	63	83.8
		3/26/1996	NA	NA	882	35	66
		6/8/1976	NA	NA	936	38	72

Period of Elavated NA/CL ←

Table 6a: Northern Cities Sentry Well Water Quality Data Summary

Table with columns: Well, Construction, Top of Casing Elevation, Date, Depth to Water, Groundwater Elevation, Total Dissolved Solids, Chloride, Sodium, Potassium, Calcium, Magnesium, Bicarbonate, Sulfate, Nitrate, Total Kjeldahl Nitrogen, Boron, Fluoride, Iodide, Manganese, Bromide, Alkalinity, Total Calcium, Carbonate, Hydroxide, Specific Conductance, Iron, Bromide/Chloride Ratio, Chloride/Bromide Ratio. Rows include wells like 32S13E-30W3, 32S13E-30W2, 12W06W-36L01, 12W06W-36L02, Oceano MW-Green, Oceano MW-Blue, Oceano MW-Silver, and Oceano MW-Yellow.

Readings in Question



Oceano Community Services District

1655 Front Street, P. O. Box 599, Oceano, CA 93445 (805) 481-6730 FAX (805) 481-6836

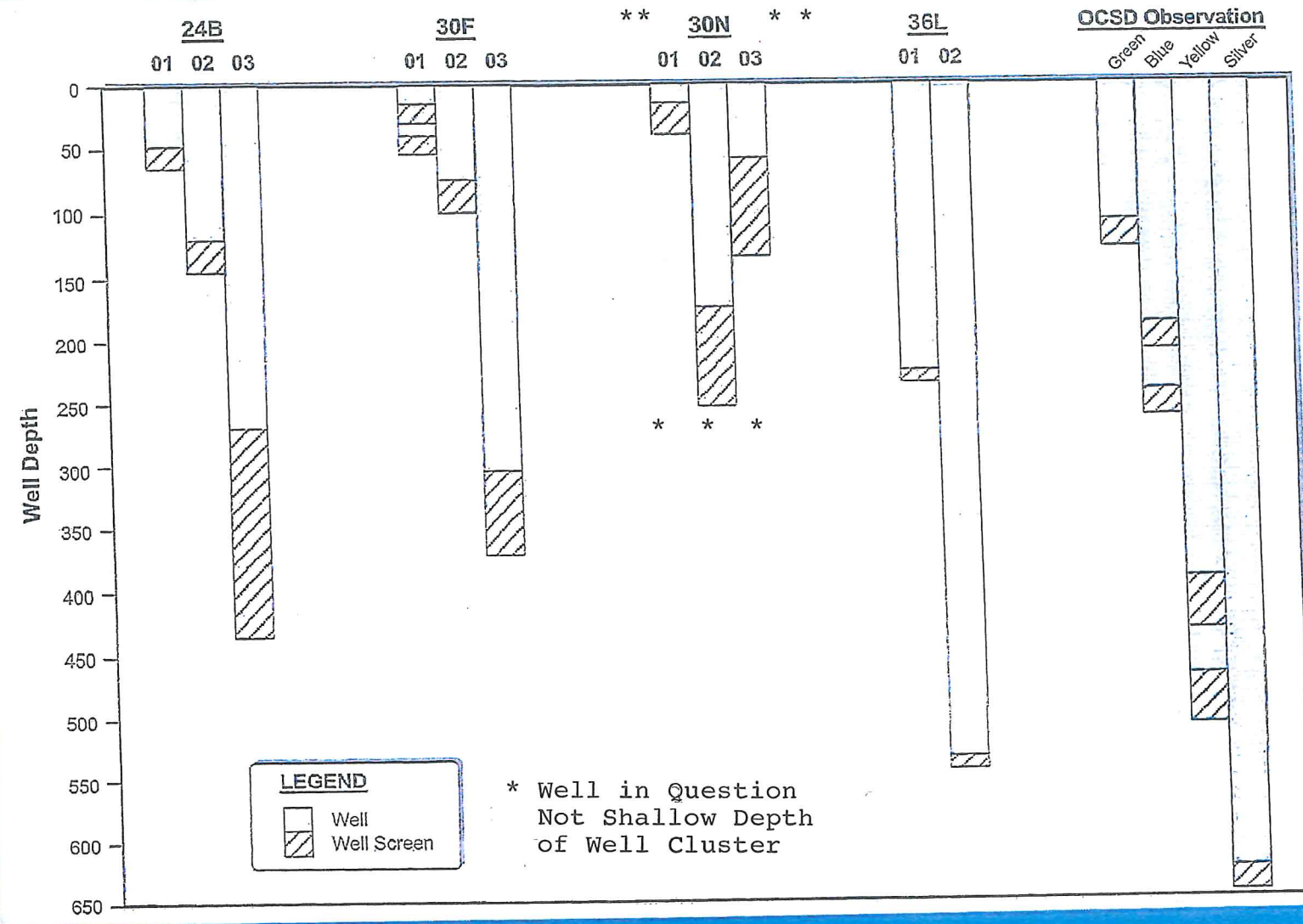
Previous Photos

of

Sentry Well



Depth of Sentry Wells





Sentry Wells N01, 2, and 3



Condition at Time of Test Exhibiting SW Characteristics



Monitoring Casings



Well in Great Disrepair. Note High Level of Contamination.



Access Port



Close Up of Contamination



Oceano Community Services District

1655 Front Street, P. O. Box 599, Oceano, CA 93445 (805) 481-6730 FAX (805) 481-6836

Current Photos

of

Sentry Well













