

M O N T E R E Y C O U N T Y

SIXTH STANDARD PARALLEL SOUTH OF MOUNT DIABLO BASE

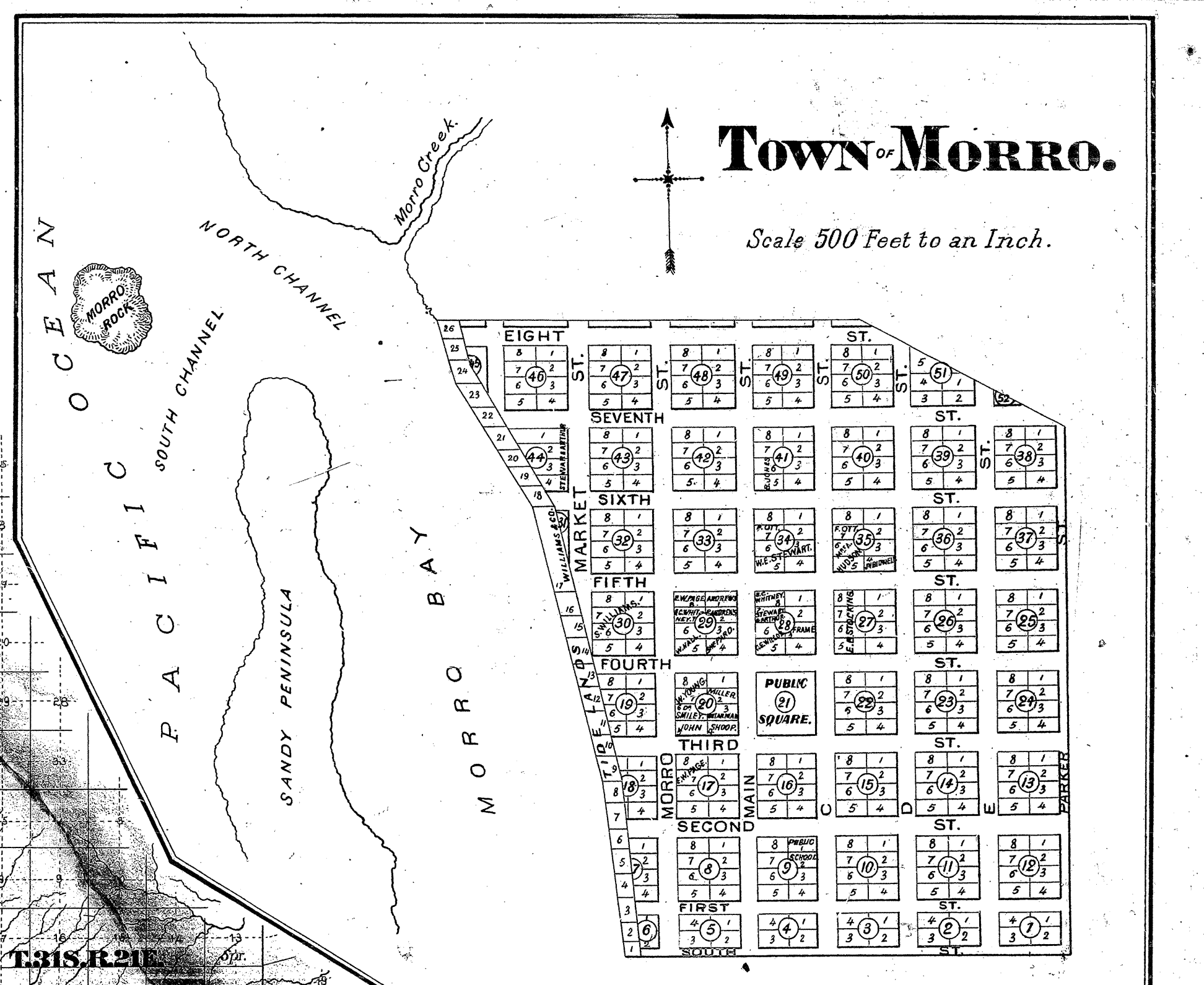
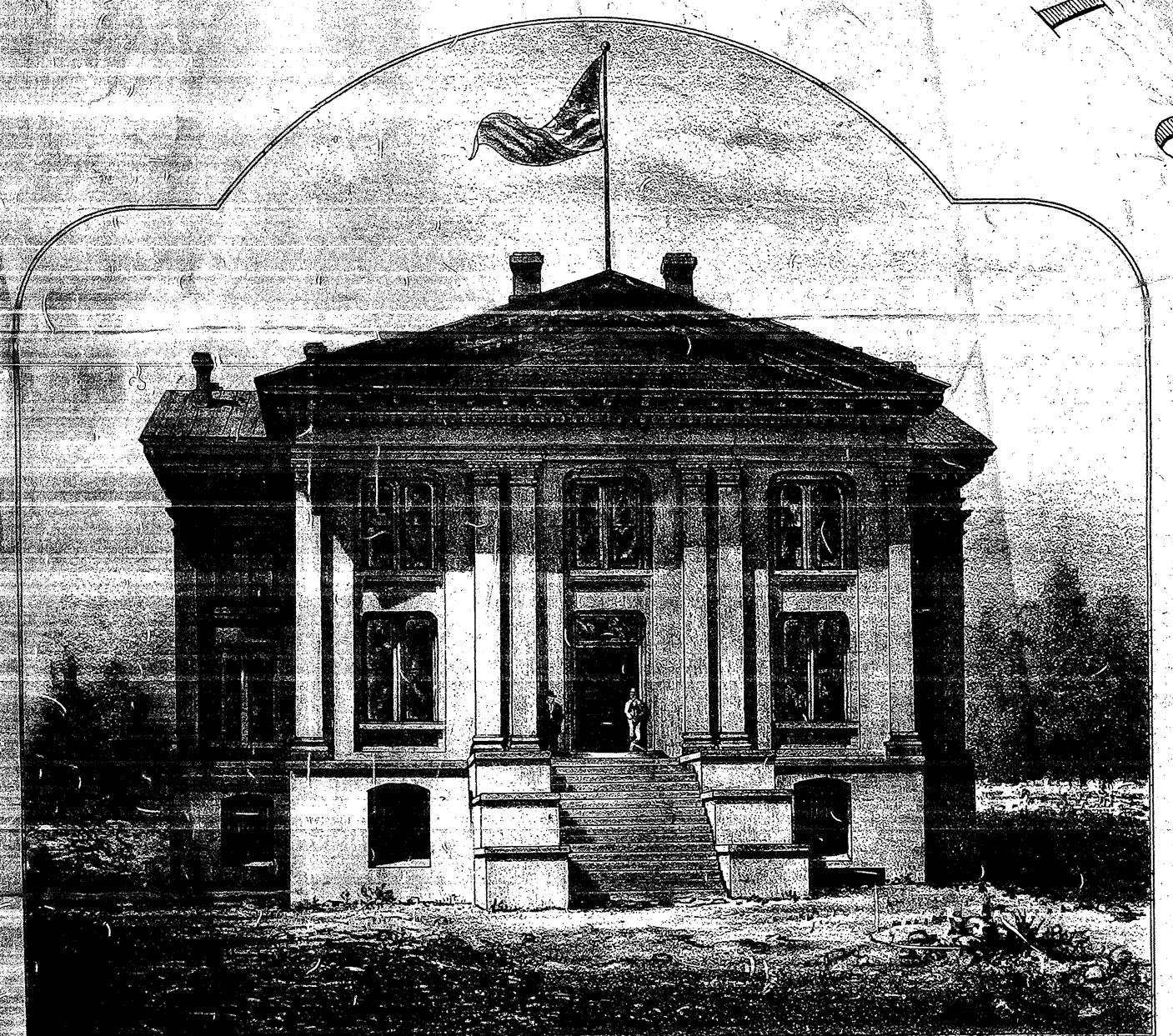


TABLE OF DISTANCES

San Luis Obispo to Monterey	100
San Luis Obispo to Santa Barbara	100
San Luis Obispo to Santa Maria	100
San Luis Obispo to Santa Ynez	100
San Luis Obispo to San Marcos	100
San Luis Obispo to San Juan	100
San Luis Obispo to San Antonio	100
San Luis Obispo to San Pedro	100
San Luis Obispo to San Felipe	100
San Luis Obispo to San Juan Bautista	100
San Luis Obispo to San Carlos	100
San Luis Obispo to San Gabriel	100
San Luis Obispo to San Dimas	100
San Luis Obispo to San Anselmo	100
San Luis Obispo to San Bruno	100
San Luis Obispo to San Marcos	100
San Luis Obispo to San Juan	100
San Luis Obispo to San Antonio	100
San Luis Obispo to San Pedro	100
San Luis Obispo to San Felipe	100
San Luis Obispo to San Juan Bautista	100
San Luis Obispo to San Carlos	100
San Luis Obispo to San Gabriel	100
San Luis Obispo to San Dimas	100
San Luis Obispo to San Anselmo	100
San Luis Obispo to San Bruno	100



Area of San Luis Obispo County in Square Miles 3,100
 Population of San Luis Obispo County in 1874 4,112
 Value of Real Estate \$3,037,716
 Total Assessment \$1,336,474
 Number of Acres of All Lands 1,336,474
 Number of Acres of Cultivated Land 37,768
 Number of Acres of Pasture Land 116,223
 Number of Acres of Forest Land 2,382
 Number of Acres of Unimproved Land 1,180,261
 Total County Debt \$55,000
 Date of Issuance for 1874, 17th July 1874

THE COUNTY OF SAN LUIS OBISPO CALIFORNIA.

CAREFULLY COMPILED FROM ACTUAL SURVEYS

PUBLISHED BY **R. R. HARRIS** COUNTY SURVEYOR

1874
 SEPTEMBER
 1874

Approved and declared to be the Official Map of San Luis Obispo County by resolution of the Board of Supervisors, September 1874.

W. J. Hamilton (Chairman)
W. J. Shedd
Geo. Ramona
Geo. Medina
 (Board of Supervisors)

REFERENCE.
 Surveyed Roads
 Unimproved Roads
 Railroads
 Township Boundary
 School District Boundary
 Spanish Grants Indicated

LITH. OF BRITTON, NEV. & CO. S. F.