

ESTABLISHMENT OF CORNER:
 Post S. 14 a Live Oak 1/2 dia bears N 38 W 100 Yds. dist.
 " S. 18 a Sycamore 14 " " " S 64 W 151 " "
 " S. 21 a Live Oak 14 " " " N 80 " 120 " "
 " S. 23 " " 18 " " " S 56 W 330 " "
 " S. 24 a Sycamore 36 " " " N 26 1/2 " 72 " "
 " S. 25 a Live Oak 18 " " " S. 8 W 297 " "

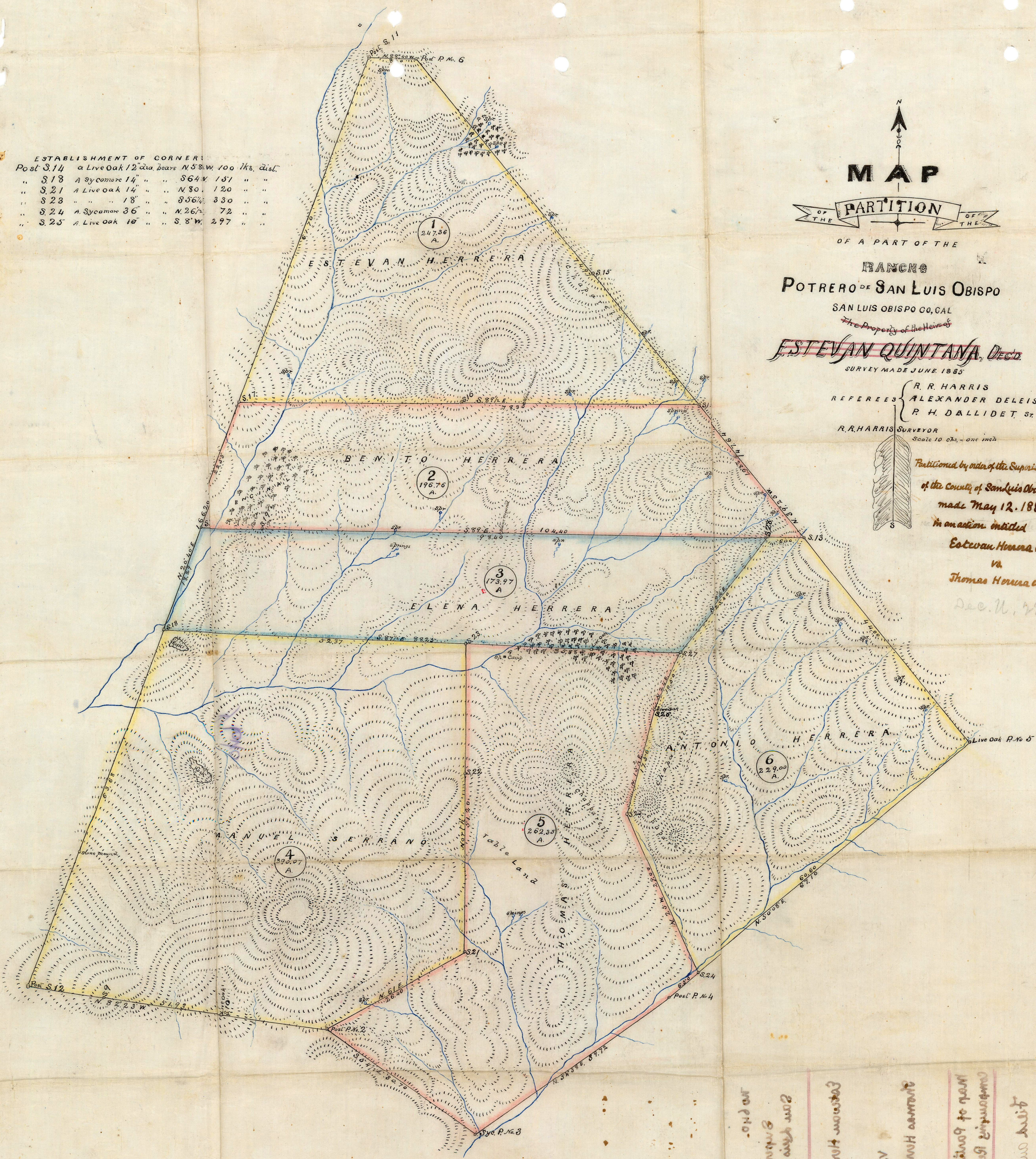
N
 ↑
MAP
 ↓
PARTITION
 OF THE
 OF THE

OF A PART OF THE
RANCHO
POTRERO DE SAN LUIS OBISPO
 SAN LUIS OBISPO CO, CAL
The Property of the Heirs of
ESTEVAN QUINTANA, Deed.
 SURVEY MADE JUNE 1885

REFEREES { R. R. HARRIS
 ALEXANDER DELEISSIGUES
 P. H. DALLIDET, Sr.
 R. R. HARRIS SURVEYOR
 Scale 10 Chs. = one inch



*Partitioned by order of the Superior Court
 of the County of San Luis Obispo -
 made May 12, 1885
 in an action entitled
 Estevan Herrera et al.
 vs
 Thomas Herrera et al.*



San Luis Obispo County
 Superior Court
 In and for the County of San Luis Obispo
 State of California
 do hereby certify that the within and foregoing map was filed for record in the office of the County Clerk of said County on the 19th day of June 1885
 at San Luis Obispo California
 J. S. W. [Signature]
 County Clerk