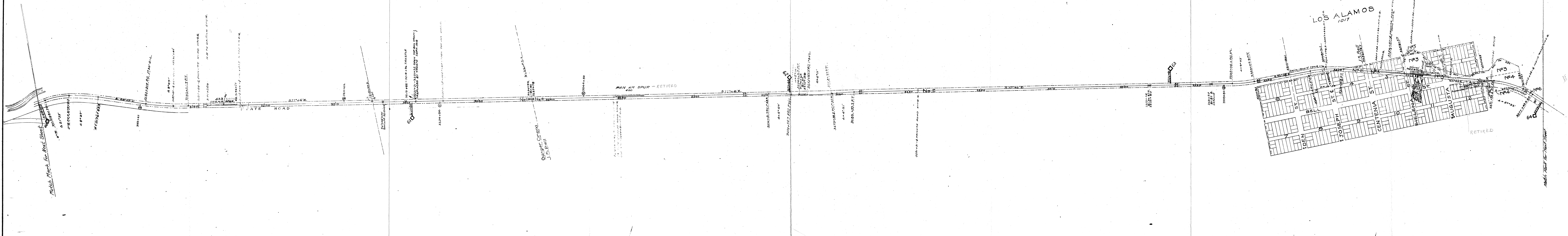
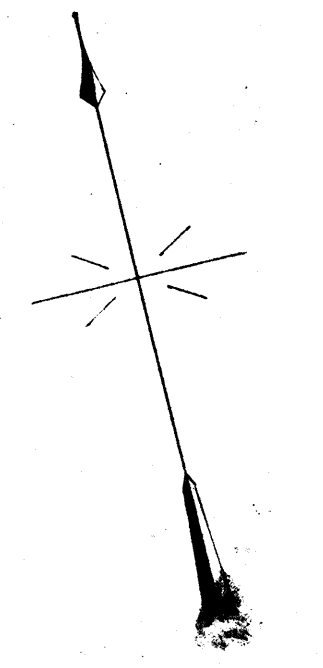


NUMBER	GRANTOR	GRANTEE	INSTRUMENT	DATE	RECORD	CUSTODIANS NUMBER	REMARKS
1	Gasper Orena	P. C. Dy.	Deed	June 20, 1882.	Z - 360	July 1, 1882.	102 60 FT. R/W.
2	J. B. Bell	"	"	May 16, "	Z - 364	"	103 " "
3	J. B. Shaw	"	"	"	Z - 366	"	105 " "
3	"	"	"	" 16	Z - 368	"	171 Irregular Tract - Dept Grounds
4	David Russell	"	"	Aug. 29, 1882	Z - 552	Sep 18, 1882	170 Tract 200' x 450'
4	J. B. Shaw	"	"	May 13, 1882	Z - 370	July 1, 1882	106 " "
5	Eliza S. Curtis	"	"	May 5, 1882	Z - 371	"	107 Irregular Tract
6	J. D. Shaw	"	"	Dec. 1, 1887	19-464	Feb 8, 1888	104 60 FT. R/W.



ALL IN 5th ROAD DISTRICT  
 ALL IN LOS ALAMOS CEMETERY DISTRICT  
 ALL IN " STREET LIGHTING DISTRICT  
 ALL IN " FIRE DISTRICT  
 ALL IN " SCHOOL DISTRICT  
 71-2-0



State Board of  
 Equalization LAND  
 IDENTIFICATION MAP  
 S.B.E.  
 MAP No. 855-42-7

Checked with  
 County Assessor

Reference use only - California State Railroad Museum

SHEET NUMBER 16 OF 19 SHEETS  
 MAIN LINE FROM SURVEY  
 STATION 0100 TO SURVEY STATION 405+550  
 CHIEF ENGINEER

MAIN LINE  
 RIGHT - OF - WAY AND TRACK MAP  
 PACIFIC COAST RAILWAY  
 OPERATED BY THE  
 PACIFIC COAST RAILWAY COMPANY  
 STATION 3168+00 TO STATION 3379+20  
 SCALE 1 INCH 400 FEET JUNE 30 1916  
 OFFICE OF CHIEF ENGINEER SEATTLE WASHINGTON

