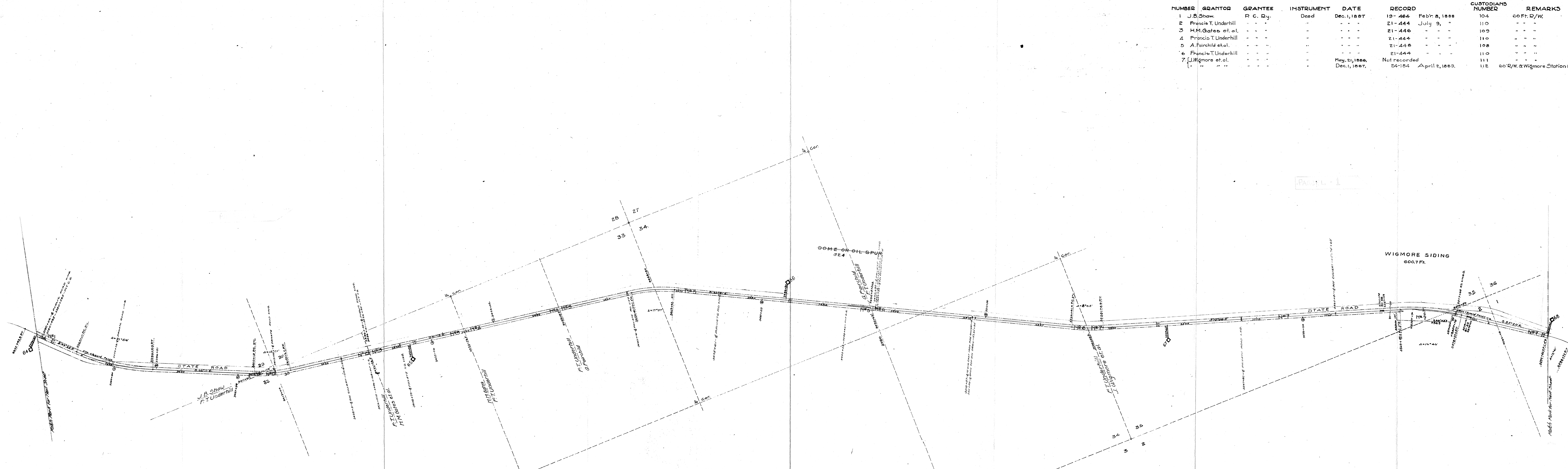


NUMBER	GRANTOR	GRANTEE	INSTRUMENT	DATE	RECORD	CUSTODIANS NUMBER	REMARKS
1	J.B. Shaw	R. C. Ry.	Deed	Dec. 1, 1887	19-464	Feb. 8, 1888	104 60 Ft. R/W.
2	Francis T. Underhill	" "	"	" "	21-444	July 9, "	110 "
3	H.M. Gates et. al.	" "	"	" "	21-446	" "	109 "
4	Francis T. Underhill	" "	"	" "	21-444	" "	110 "
5	A. Fairchild et. al.	" "	"	" "	21-448	" "	108 "
6	Francis T. Underhill	" "	"	" "	21-444	" "	110 "
7	J. Wigmore et. al.	" "	"	May 21, 1886	Not recorded	" "	111 "
1	" "	" "	"	Dec. 1, 1887	24-184	April 2, 1889	112 60' R/W. & Wigmore Station Grounds



ALL IN 5th ROAD DISTRICT  
 ALL IN LOS ALAMOS SCHOOL DISTRICT  
 ALL IN " " FIRE DISTRICT  
 ALL IN " " CEMETERY DISTRICT  
 ALL IN " " STREET LIGHTING DISTRICT  
 73-2-0

Rates cancelled  
 and no service  
 performed on  
 this part of line

Reference use only - California State Railroad Museum

SHEET NUMBER 17 OF 19 SHEETS  
 MAIN LINE FROM SURVEY  
 STATION 0+00 TO SURVEY STATION 403+500  
 CHIEF ENGINEER

State Board of  
 Equalization LAND  
 IDENTIFICATION MAP  
 S.B.E.  
 MAP No. 855-42-3

Checked with  
 County Assessor

MAIN LINE  
 RIGHT - OF - WAY AND TRACKS  
 PACIFIC COAST RAILWAY  
 OPERATED BY THE  
 PACIFIC COAST RAILWAY COMPANY  
 STATION 3379+20 TO STATION 3590+40  
 SCALE 1 INCH=400 FEET JUNE 30 1916  
 OFFICE OF CHIEF ENGINEER SEATTLE WASH. 1916