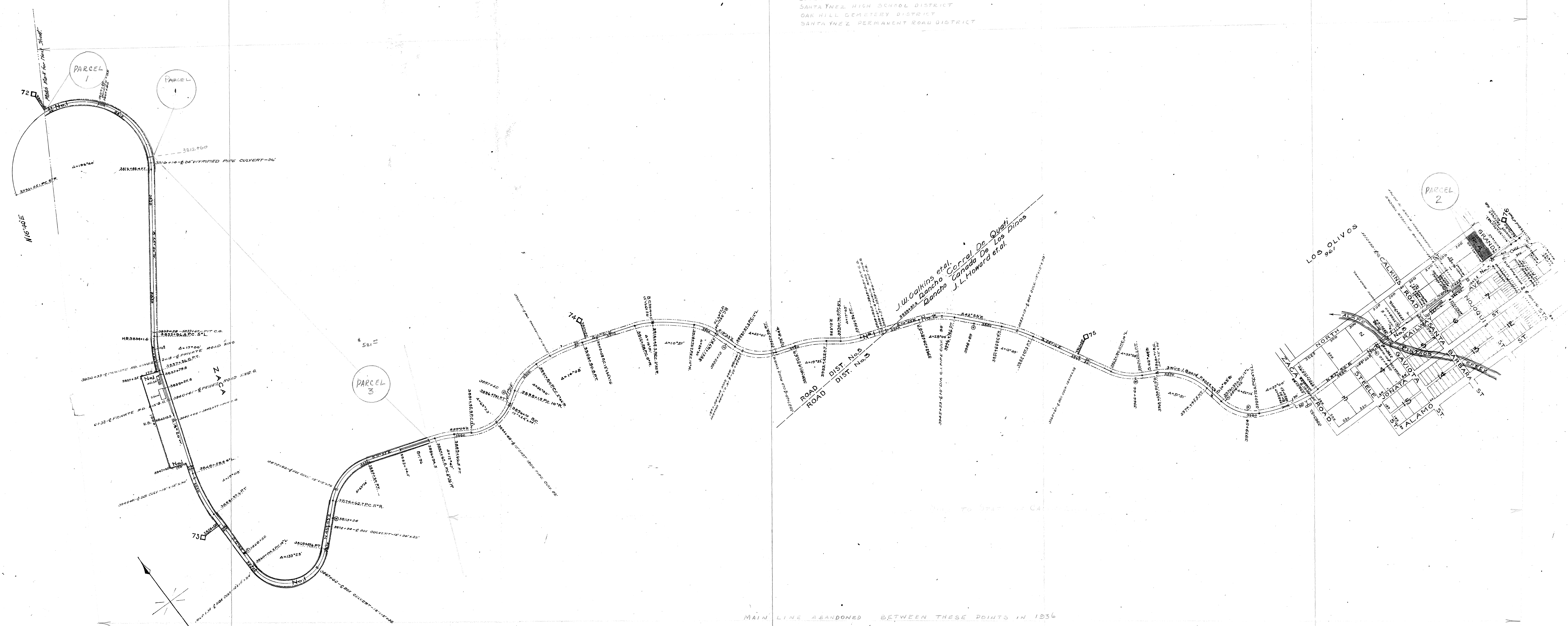


NUMBER	GRANTOR	GRANTEE	INSTRUMENT	DATE	RECORD	CUSTODIAN'S NUMBER	REMARKS
1	J.W. Calkins et al.	P. C. Ry.	Deed	Feb. 16, 1888.	24 587	113	60 Ft. R/W. Also Zaca Depot Grounds
2	J.L. Howard et al.	"	"	Dec. 1, 1887.	19 466	114	Station grounds Los Olivos
3	"	"	"	"	"	"	"
4	Samuel Schwartz	"	"	Jan. 24, 1888.	19 515	115	Lots 1 & 2 Bk. 1 Los Olivos

74-9-0
 LOS OLIVOS SCHOOL DISTRICT
 SUPERVISOR'S ROAD DISTRICT No. 3
 SANTA YNEZ HIGH SCHOOL DISTRICT
 OAK HILL CEMETERY DISTRICT
 SANTA YNEZ PERMANENT ROAD DISTRICT



MAIN LINE ABANDONED BETWEEN THESE POINTS IN 1936

Reference use only - California State Railroad Museum

SHEET NUMBER 19 OF 19 SHEETS
 MAIN LINE FROM SURVEY
 STATION 0+00 TO SURVEY STATION 4013+590
 CHIEF ENGINEER

State Board of Equalization LAND IDENTIFICATION MAP
 S.B.E.M. MAP NO. 855-4 1-10 a

MAIN LINE RIGHT - OF - WAY AND TRACK MAP
 PACIFIC COAST RAILWAY OPERATED BY THE PACIFIC COAST RAILWAY COMPANY
 STATION 380+60 TO STATION 4013+590
 SCALE 1 INCH = 400 FEET JUNE 30 1916
 OFFICE OF CHIEF ENGINEER SEATTLE WASHINGTON

