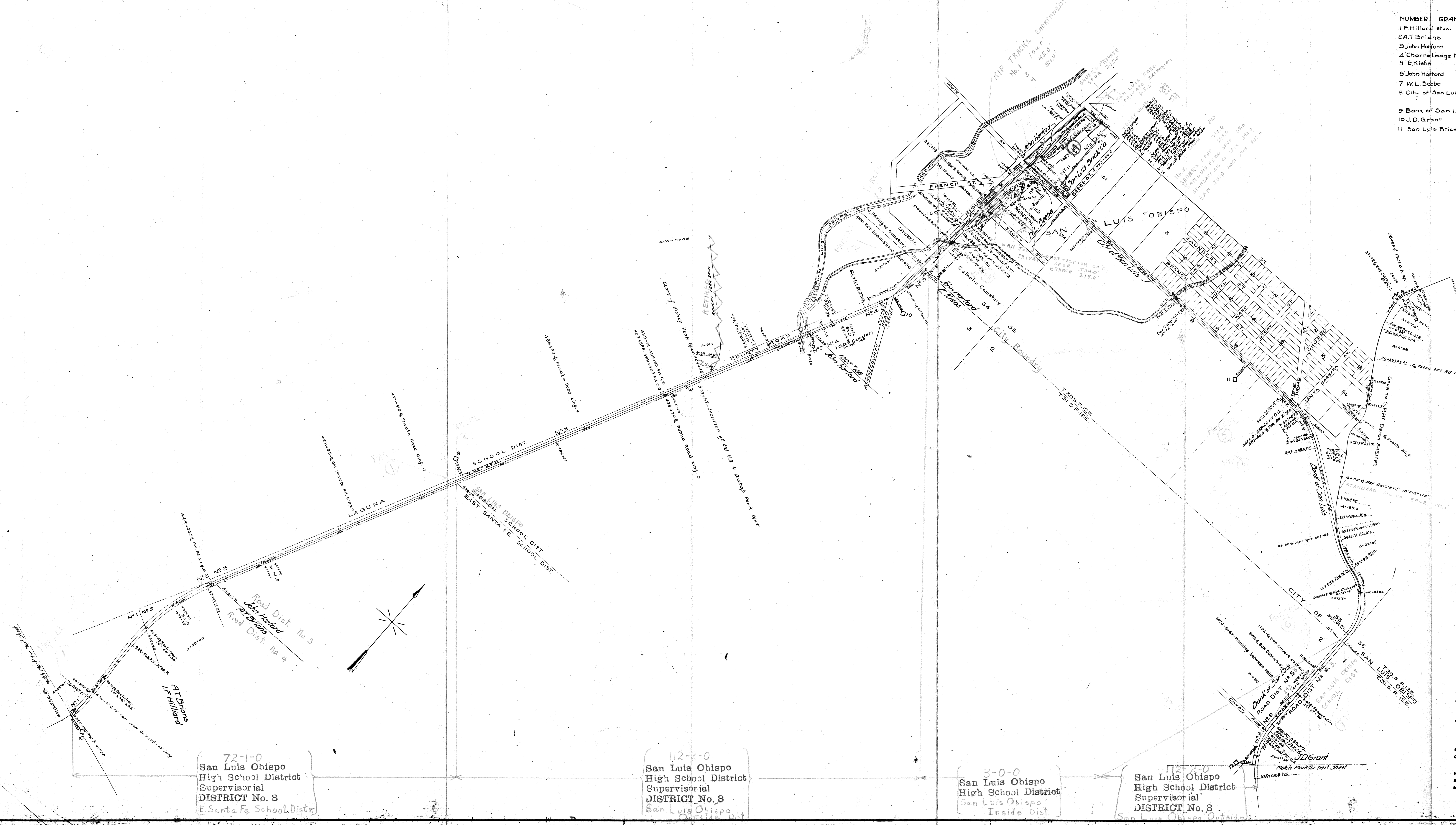


NUMBER	GRANTOR	GRANTEE	INSTRUMENT	DATE	RECORD	CUSTODIANS NUMBER	REMARKS
1	Hillard et ux.	S. H. Ver.	DEED	Feb. 7, 1876	H. 300 Feb. 8, 1876	124	60' R/W.
2	A. T. Briggs	" " "	"	" 8 "	" 299 " " "	127	" "
3	John Harford	" " "	"	" 7 "	" 308 " " "	119	40' "
4	Chorro Lodge No. 102-100P	" " "	"	Oct. 8, 1876	L. 211 Oct. 24, 1876	125	" "
5	E. Klebs	" " "	"	Feb. 8, 1876	H. 302 Feb. 8, 1876	126	60' "
6	John Harford	" " "	"	" 7 "	H. 306 " " "	119	100 wide 170' deep. 852x460 to 542x414. 230' wide 542x414 to 542. See deed for parcel & deed has been misplaced.
7	W. L. Beebe	" " "	"	" 23, 1882	O. 94 April 4, 1882	21	Triangle near shops
8	City of San Luis Obispo	" " "	Franchise Deed	June 14, 1881	N. 179 July 21, 1881	130	30' R/W N. 30' of South St. to East line of County Road
9	Bank of San Luis Obispo	" " "	"	July 11, 1881	N. 160 July 12, 1881	22	60' R/W
10	J. D. Grant	" " "	"	Aug. 30, 1882	O. 491 Sept. 8, 1882	23	" "
11	San Luis Brick Co.	R. C. Ry.	"	March 10, 1888	80-222-March 10, 1888	254	Irregular Tract Div. 1st



SHEET NUMBER 3 OF 19 SHEETS MAIN LINE AND SHEET NUMBER 1 OF 1 SHEET OF BRANCH TO SOUTHERN PACIFIC RY. DEPOT SURVEY STATION 0+00 TO 4+01.59.0 AND 602+84.0 = 0+00 TO 34+31.7

Reference use only - California State Railroad Museum

State Board of Equalization LAND IDENTIFICATION MAP S.B.E. MAP No. 855-40-3

CHIEF ENGINEER
 STATE OF WASHINGTON
 COUNTY OF KING
 I, THE UNDERSIGNED, OFFICER OF THE PACIFIC COAST RAILWAY COMPANY DO HEREBY CERTIFY THAT THIS IS A CORRECT MAP, IN A SERIES OF ONE PRIMARY SHEETS AND NO SUPPLEMENTAL SHEETS OF SAID RAILROAD FROM SURVEY STATION 602+84 TO SURVEY STATION 34+31.7 STATE OF CALIFORNIA, PREPARED FROM THE RECORDS OF SAID COMPANY.
 CORRECT: *[Signature]*
 CHIEF ENGINEER
 ASSISTANT SECRETARY
 SUBSCRIBED AND SWORN TO BEFORE ME, THIS SIXTEENTH DAY OF MAY 1917
 NOTARY PUBLIC IN AND FOR THE COUNTY OF KING, STATE OF WASHINGTON.
 MY COMMISSION EXPIRES, FEBRUARY SIXTH 1921

Checked with County Assessor

MAIN LINE RIGHT-OF-WAY AND TRACK MAP OPERATED BY THE PACIFIC COAST RAILWAY COMPANY STATION 422+40 TO STATION 633+60 SCALE 1 INCH=400 FEET JUNE 30 1916 OFFICE OF CHIEF ENGINEER SEATTLE, WASH. STATE

72-1-0 San Luis Obispo High School District Supervisorial DISTRICT No. 3 E. Santa Fe School Distr.

112-2-0 San Luis Obispo High School District Supervisorial DISTRICT No. 3 San Luis Obispo Outside Distr.

3-0-0 San Luis Obispo High School District San Luis Obispo Inside Distr.

San Luis Obispo High School District Supervisorial DISTRICT No. 3 San Luis Obispo Outside Distr.