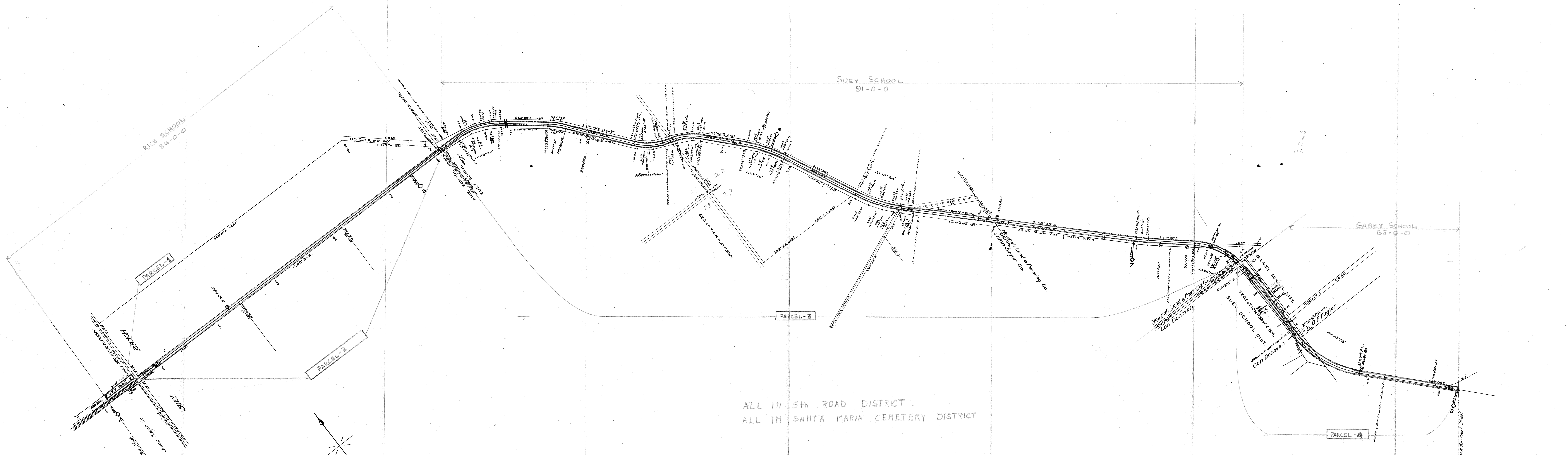


NUMBER	GRANTOR	GRANTEE	INSTRUMENT	DATE	RECORD	CUSTODIANS NUMBER	REMARKS
1	Union Sugar Co.	P. C. Ry.	Deed	Oct. 31, 1909	125-104	Nov. 18, 1909.	265 455' R/W. Also 200' of Gravel
2	"	"	"	Dec. 7, 1909	126-34	Jan. 24, 1910.	269 60' R/W.
3	The Newhall Land & Farming Co.	"	"	Aug. 30, 1909	124-477	Sept. 22, 1909.	264 " " "
4	Con. Donovan	"	"	" 19, "	124-476	" "	263 " " "
5	A. F. Fugler et al.	"	"	April 8, 1910	126-507	April 28, 1910.	272 " " "



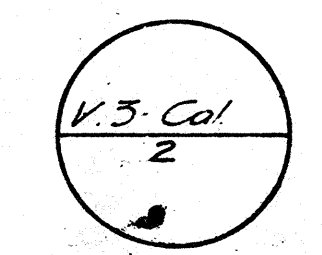
ALL IN 5th ROAD DISTRICT  
 ALL IN SANTA MARIA CEMETERY DISTRICT

State Board of  
 Equalization LAND  
 IDENTIFICATION MAP  
 S.B.E.  
 MAP No. 855-42-16

Checked with  
 County Assessor Reference use only - California State Railroad Museum  
 SISQUOC BRANCH  
 RIGHT - OF - WAY AND TRACK MAP

SHEET NUMBER 2 OF 3 SHEETS  
 SISQUOC BRANCH FROM SURVEY  
 STATION 0+00 TO SURVEY STATION 591+42.  
 CHIEF ENGINEER  
 OFFICE OF CHIEF ENGINEER SEATTLE WASHINGTON

PACIFIC COAST RAILWAY  
 OPERATED BY THE  
 PACIFIC COAST RAILWAY COMPANY  
 STATION 211+20 TO STATION 422+40  
 SCALE 1 INCH 400 FEET JUNE 30 1916



28/27

24  
 25  
 32  
 788