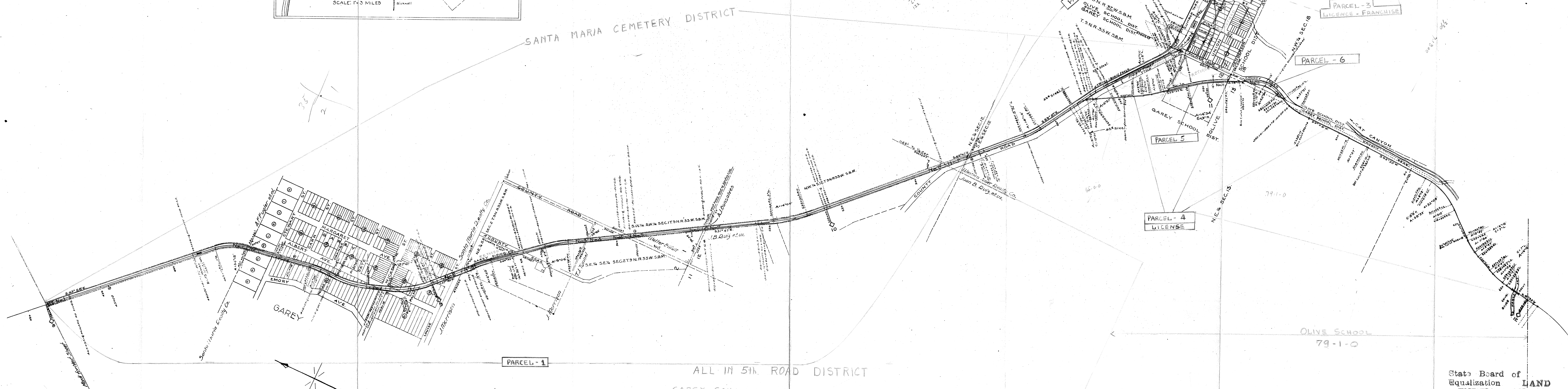


NUMBER	GRANTOR	GRANTEE	INSTRUMENT	DATE	RECORD	CUSTODIAN'S NUMBER	REMARKS
1	A.F. Fugler et al.	D.O. Dy.	Deed	April 2, 1910	126-507	April 25, 1910	272 60 Ft. D/W.
2	Santa Maria Realty Co.	-	-	Dec. 31, 1909	127-51	March 5, "	270 " " "
3	J. Morrison	-	-	Febr. 4, 1910	127-52	" "	271 " " "
4	T.J. Tunnel	-	-	Nov. 25, 1909	121-491	August 3, 1912	297 " " "
5	Walter Elliott	-	-	" "	126-192	March 3, 1910	267 60' R/W Also Triangular Tract.
6	A.J. Consolvo	-	-	" "	126-193	" "	268 60' R/W.
7	Juan B. Ruiz et al.	-	-	" "	125-155	Nov. 15, 1909	266 " " "
8	Western Amer. Realty Co.	-	-	Dec. 14, 1909	128-169	July 21, 1910	275 " " "
9	Paul D. Tietjen	-	-	Dec. 31, "	147-221	Jan. 19, 1915	315 Depot & Lumber Yard
10	Maria Ontiveros	-	-	August 10, 1911	132-447	Sept. 26, 1911	292 30' R/W.
11	Samuel Fleisher et al.	-	-	" "	132-445	" "	291 45' "
	S.O. Sinsheimer	-	-	" "	132-448	" "	293 " "



SHEET NUMBER 3 OF 3 SHEETS OF SISQUOC BRANCH AND SHEET NUMBER 1 OF 2 SHEETS OF PALMER BRANCH FROM SURVEY STATION 0+00 TO 391+42, AND 562+39.0 TO 768+11.0

CHIEF ENGINEER

STATE OF WASHINGTON
COUNTY OF KING
I, THE UNDERSIGNED, OFFICER OF THE PACIFIC COAST RAILWAY COMPANY DO HEREBY CERTIFY THAT THIS IS A CORRECT MAP, IN A SERIES OF TWO PRIMARY SHEETS AND 10 SUPPLEMENTAL SHEETS OF SAID RAILROAD FROM SURVEY STATION 362+99 TO SURVEY STATION 768+11 STATE OF CALIFORNIA, PREPARED FROM THE RECORDS OF SAID COMPANY.

CORRECT:

CHIEF ENGINEER
ASSISTANT SECRETARY

SUBSCRIBED AND SWORN TO BEFORE ME, THIS SIXTEENTH DAY OF MAY 1917

NOTARY PUBLIC IN AND FOR THE COUNTY OF KING
STATE OF WASHINGTON
MY COMMISSION EXPIRES, FEBRUARY SIXTH 1921

State Board of Equalization and IDENTIFICATION MAP
S.B.E.
MAP No. 855-42-16

Checked with
County Assessor

SISQUOC BRANCH AND PALMER BRANCH RIGHT - OF - WAY AND TRACK MAP
OPERATED BY THE PACIFIC COAST RAILWAY COMPANY
STATION 422+40 TO STATION 633+60
SCALE 1 INCH = 400 FEET
JUNE 30 1916
OFFICE OF CHIEF ENGINEER SEATTLE WASHINGTON