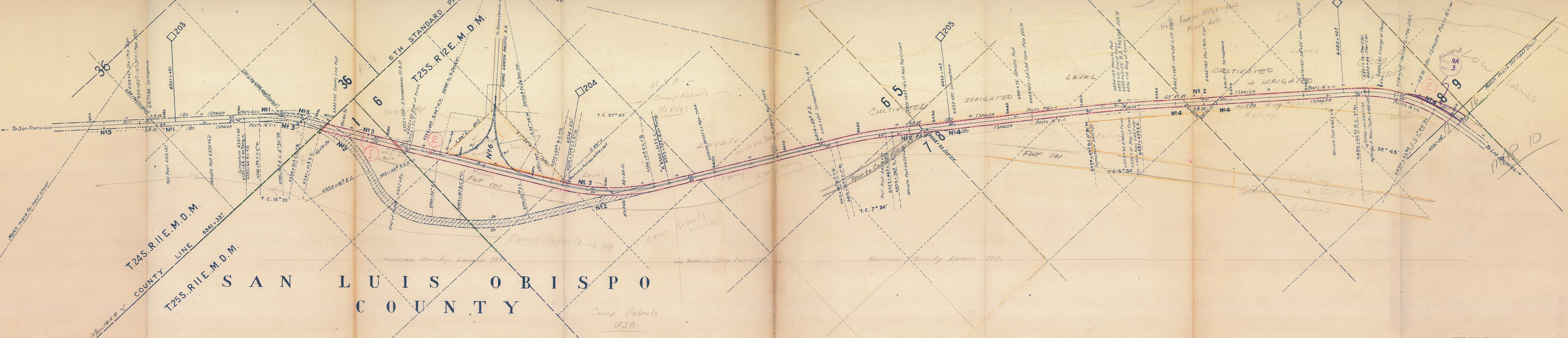


MONTEREY COUNTY



Note 1: 24 1/2 acs. acqd. 0 2/3 acs. disp. of by deed 30861 below, shown hatched; 20 1/2 acs. shown as Par. 6 map 25  
 Note 2: 14 2/3 acs. disp. of; 0 2/3 acs. acqd. by Par. 1 above; 9 2/3 acs. acqd. by Par. 2 above; 0 2/3 acs. acqd. by Par. 5 below; 4 1/2 acs. acqd. by Par. 6 & 7 map 25  
 Note 3: 3 1/2 acs. acqd. 0 2/3 acs. disp. of by deed 30861 above, shown hatched; No other record at hand  
 Note 4: Parcel above showing S.P.Co. as Grantee is held in trust for S.P.R.R.Co. See Declaration of Trust dated Feb. 9th, 1920.