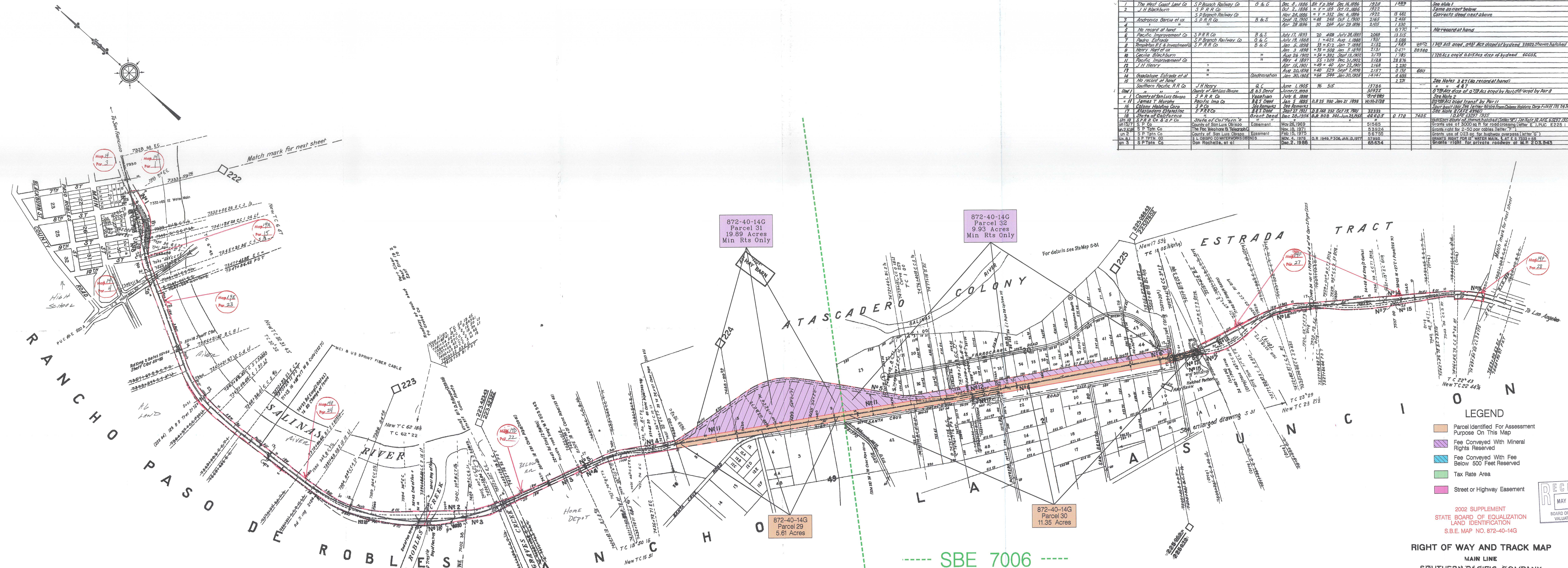


No.	Grantor	Grantee	Instru	Date	Record	Cust d No	Acres	Remarks
1	The West Coast Land Co	S.P. Branch Railway Co	G & G	Dec. 8, 1886	Bl. Y's 394 Dec. 16, 1886	1928	7,489	See Note 1
2	J.H. Blackburn	S.P. R.R. Co	"	Oct. 2, 1886	" V = 189 Oct 17, 1886	1922	18,682	Same as first below
3	Andronico Garcia et ux	S.P. Branch Railway Co	B & S	Nov. 26, 1886	" V = 382 Dec. 6, 1886	1922	2,485	Corrects deed next above
4	"	S.P. R.R. Co	"	Apr. 28, 1896	" 468 288 Oct 1, 1900	2,062	1,330	"
5	No record at hand	"	"	"	"	"	"	No record at hand
6	Pacific Improvement Co	S.P.R.R. Co	B & S	July 17, 1893	20 488 July 26, 1893	2069	6,770	"
7	Pedro Estrada	S.P. Branch Railway Co	G & G	July 19, 1888	" 452 Aug. 1, 1888	1931	3,088	"
8	Remington R.F. & Investment Co	S.P. R.R. Co	B & S	Jan. 5, 1898	31 = 512 Jan 7, 1898	2,132	7,482	1,369 Acs acqd. 0.081 Acs disp'd of by deed 30922 Shown hatched
9	Henry Hart et ux	"	"	Aug. 2, 1898	" 53 = 508 Aug. 5, 1898	2,131	0,477	20,960
10	Cecilia Blackburn	"	"	Aug. 26, 1903	" 54 = 392 Sept. 13, 1903	2,173	1,785	1720 Acs acqd. 0.015 Acs disp'd of by deed 46605.
11	Pacific Improvement Co	"	"	May 4, 1897	55 = 209 Dec. 3, 1902	2,128	28,876	"
12	J.H. Henry	"	"	Apr. 15, 1901	" 49 = 40 Apr. 22, 1901	2,168	2,240	"
13	"	"	"	Aug. 30, 1896	" 40 = 529 Sept. 2, 1898	2,157	0,787	6911
14	Guadalupe Estrada et al	"	Condemnation	Jan. 30, 1905	" 56 = 544 Jan. 30, 1905	1,414	4,682	"
15	No record at hand	"	"	"	"	"	"	"
16	J.H. Henry	County of San Luis Obispo	G & C	June 1, 1905	" 47	3,315	1,786	See Note 3 & 4 (No record at hand)
17	Southern Pacific R.R. Co	"	B & S Deed	June 7, 1899	"	30,922	4,427	0.789 Acs disp'd of 0.789 Acs acqd by Par 8 (No record at hand)
18	County of San Luis Obispo	S.P. R.R. Co	Vacation	July 6, 1886	"	0,925	0,925	See Note 2
19	James T. Murphy	Pacific Imp. Co	B & S Deed	Jan. 2, 1892	0.8 25 Feb. 10, 1899	With 2128	"	0.789 Acs acqd Transf. by Par 11
20	Colony Holding Corp	S.P. Co	See Remarks	"	"	"	"	Spur built over the right of way from Colony Holding Corp. F.R.H. 15 54, 56, 106, 109
21	Atascadero Estates Inc	S.P.R.R. Co	B & S Deed	Sept. 27, 1921	0.8 25 282 Oct 18, 1921	32,333	7,405	See Note 5 (See 4594)
22	State of California	"	Grant Deed	Dec. 28, 1854	0.8 25 282 Oct 18, 1921	49,602	0,170	7405
23	S.P. R.R. Co	State of Cal. Terr. Co	Easement	May 28, 1909	"	5,158	"	Grants use of 3000 sq ft for road crossing (letter "E"), P.L.C. E 225
24	S.P. R.R. Co	County of San Luis Obispo	Easement	Nov. 18, 1971	"	3,392	"	Grants right for 2-50' over cables (letter "F"), P.L.C. E 225
25	S.P. R.R. Co	County of San Luis Obispo	Easement	Feb. 15, 1975	"	5,675	"	Grants use of 0.23 ac for highway overpass (letter "G")
26	S.P. R.R. Co	S. L. OBISPO CO WATERWORKS DEPT	Easement	Nov. 4, 1976	G.R. 1949, P. 306, JAN. 18, 1977	37,898	"	GRANTS RIGHT FOR "WATER MAIN" AT S. 7333 + 58
27	S.P. R.R. Co	Don Roschilla, et al	"	Dec. 2, 1985	"	65,634	"	Grants right for private roadway at N.P. 2 03, 645

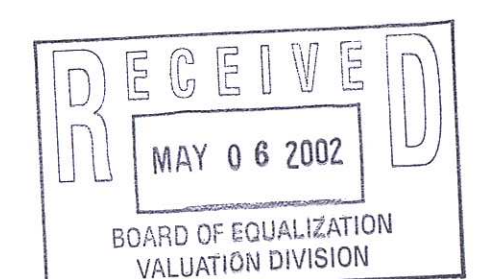


872-40-14G Parcel 31
19.89 Acres
Min Rts Only

872-40-14G Parcel 29
5.61 Acres

872-40-14G Parcel 30
11.35 Acres

- LEGEND**
- Parcel Identified For Assessment Purpose On This Map
 - Fee Conveyed With Mineral Rights Reserved
 - Fee Conveyed With Fee Below 500 Feet Reserved
 - Tax Rate Area
 - Street or Highway Easement



2002 SUPPLEMENT
STATE BOARD OF EQUALIZATION
LAND IDENTIFICATION
S.B.E. MAP NO. 872-40-14G

RIGHT OF WAY AND TRACK MAP
MAIN LINE
SOUTHERN PACIFIC COMPANY
OPERATED BY
SOUTHERN PACIFIC COMPANY
COAST DIVISION, SAN LUIS OBISPO COUNTY CALIFORNIA
FROM STATION 7533+59.8 TO STATION 7550+00
Scale 1 inch = 400 feet

V-68
31
V-36
31

Note No 1 51 522 Acs acqd. 0.28 Acs disp'd of by deed 30922 Shown hatched 49 418 Acs Shown as Par 1 Map 20
Note No 2 Vacates 0.33 Acs Shown by letter C. 0.29 Acs incl in Par 10 0.04 Acs incl in Par 2
Note No 3 2 382 Acs disp'd of 0.18 Acs disp'd of by deed 13786 Shown hatched
Note No 4 10 977 Acs disp'd of 0.18 Acs acqd by Par 15 3 382 Acs by Par 4 map 32 6 888 Acs by Par 8 Map 33
Note No 5 S.P. Branch Ry. Co was consolidated with S.P.R.R. Co May 14, 1888
Note No 6 Parcel 6 Shown as S.P. Co-25 Grants are held in trust for S.P.R.R. Co. See Declaration of Trust dated Feb 9 1920
Note No 7 Of the 688 sq ft prev disp'd of by deed 13786 4691 sq ft reacqd by Par 17 Shown by letter D
Note No 8 37482 sq ft acqd 18295 sq ft Shown as Par 17 and 19167 sq ft as Par 10 Map 32
Note No 9 The 5270 sq ft previously shown in area column have been eliminated as track retired A.F.E. 50189
Note No 10 S.P.R.R. Co & S.P. Co relinquish to State all easements & rights of access (exc for R purposes) over west line of Par 18 and over the east line of 9 010 ac (letter A) disp'd of

60375
31

OFFICE OF CHIEF ENGINEER
SAN FRANCISCO CALIFORNIA

8631 8724014G.DGN
CAV68031.TIF