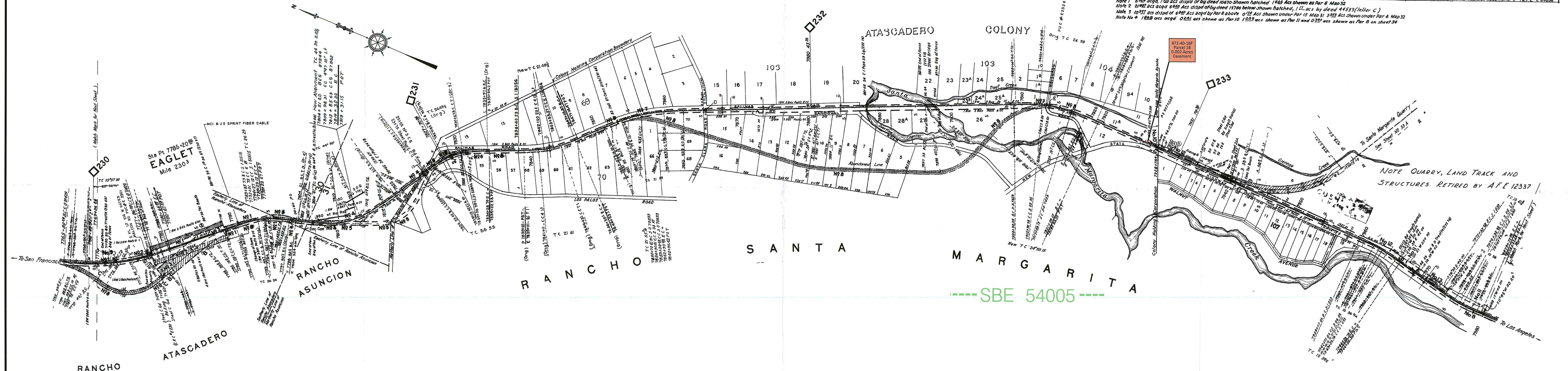


Note No 5 61266 acs acqd shown as follows: 1708 acs as Par 12, 0482 acs as Par 13, 5879 acs included in Par 8 being a 50 strip from e s 7928 1784 to e s 7980+00 on Sheet 34, 48755 acs as Pars 13, 14 and incl in Par 8, on Sheet 35, 4482 acs as Pars 15 16 and incl in Pars 1 and 2  
 Note No 6 1882 acs acqd 0222 acs incl in Par 3 shown by letter A, 0728 acs disp'd of by deed 44533 shown hatched  
 Note No 7 4920 acs acqd 0328 acs disp'd of by deed 10670 shown hatched, 2788 acs by deed 44533 (letter "B")  
 Note No 8 3221 acs disp'd of shown hatched acqd as follows on this sheet 0228 acs by Par 2, 2288 acs by Par 3 (letter B), 112 acs by Par 8 (letter C), and on sheet 32 3 02 acs by Par 1 & 022 acs by Par 5

| No. | Grantor                           | Grantee                   | Instru     | Date         | Record           | Cust d No    | Acres   | Sq Ft | Remarks  |
|-----|-----------------------------------|---------------------------|------------|--------------|------------------|--------------|---------|-------|--|
| 1   | Mary and Matilda Yaffe            | Southern Pacific R.R. Co. | B & S      | Feb 23 1899  | BB 35 p 178      | Mar 2 1899   | 2137    | 8,678 | See Note 1   |
| 2   | J.H. Von Schroeder et ux          | S.P.R.R. Co.              | B & S      | July 25 1910 | B & S            | 10670        | 1,067   | 4,528 | 1254 acs disp'd of 1782 acs by Part 1 0328 acs acqd by Par 3   |
| 3   | George Improvement Co.            | S.P.R.R. Co.              | B & S      | Dec 5 1910   | 1 87 217         | Dec 9 1910   | 10671   | 0,333 | See Note No 6  |
| 4   | Timoteo Alvarado et ux            | S.P.R.R. Co.              | B & S      | July 2 1899  | 1 40 404         | July 5 1899  | 2192    | 1,790 | See Note No 7  |
| 5   | "                                 | "                         | Release    | Feb 6 1899   | 41 259           | Feb 6 1899   | WN 2192 |       | Release from certain conditions in deed 2192   |
| 6   | B.D. Murphy                       | "                         | B & S      | Oct 5 1898   | 2 470            | Oct 15 1898  | 1933    | 1,084 |  |
| 7   | J.H. Henry                        | "                         | B & S      | July 6 1899  | 1 40 404         | July 19 1899 | 2192    | 1,790 |  |
| 8   | "                                 | "                         | B & S      | Dec 8 1898   | 1 41 124         | Dec 12 1898  | 2160    | 8,754 | 21290  |
| 9   | Jasper P. Ortega et ux            | S.P.R.R. Co.              | B & S      | Dec 6 1927   | 190 186          | Jan 28 1928  | 52871   | 5979  | No record of band (See Note 2) (Title to S 879 acs 50 strip from e s 7928 1784 to e s 7980+00 on Sheet 34, 48755 acs as Pars 13, 14 and incl in Par 8, on Sheet 35, 4482 acs as Pars 15 16 and incl in Pars 1 and 2) |
| 10  | Santa Margarita Land & Cattle Co. | S.P.R.R. Co.              | Franchise  | Apr 6 1917   | Franchise        | Fr 1126      |         |       | Right to Construct at Most E. S. 7777-782  |
| 11  | "                                 | "                         | B & S Deed | July 25 1941 | O.R. 310 P22     | Sep 25 1941  | 41990   | 0,241 | See Note No 4  |
| 12  | Santa Margarita Land & Cattle Co. | S.P.R.R. Co.              | "          | June 18 1942 | O.R. 326 P 322   | Sep 30 1942  | 42410   |       |  |
| 13  | "                                 | "                         | "          | May 26 1969  | "                | "            | 44533   |       |  |
| 14  | "                                 | "                         | "          | Oct 24 1977  | O.R. 2040, P 351 | 231878       | 58516   |       |  |

Note 1 6754 acs disp'd of by deed 10670 shown hatched 1482 acs shown as Par 6 Map 32  
 Note 2 2192 acs acqd 8882 acs disp'd of by deed 1782 shown below shown hatched 1782 acs by deed 44533 (letter C)  
 Note 3 10221 acs disp'd of 6882 acs acqd by Par 8 above 4192 acs shown under Par 15 Map 31 3223 acs shown under Par 4 Map 32  
 Note No 4 1882 acs acqd 0222 acs shown as Par 10 1288 acs shown as Par 11 and 0222 acs shown as Par 8 on sheet 34



**LEGEND**

- Parcel Identified For Assessment Purpose On This Map
- Fee Conveyed With Mineral Rights Reserved
- Fee Conveyed With Fee Below 500 Feet Reserved
- Tax Rate Area
- Street or Highway Easement

Scale: 1 inch = 400 feet  
 400 0 400 800 feet

2016 SUPPLEMENT  
 STATE BOARD OF EQUALIZATION  
 LAND IDENTIFICATION  
 S.B.E. MAP NO. 872-40-16F

**RIGHT OF WAY AND TRACK MAP**  
 MAIN LINE  
 SOUTHERN PACIFIC COMPANY  
 OPERATED BY  
 SOUTHERN PACIFIC COMPANY  
 COAST DIVISION, SAN LUIS OBISPO COUNTY CALIFORNIA  
 FROM STATION 7770+00 TO STATION 7980+00  
 Scale: 1 inch = 400 feet  
 JUNE 30th 19  
 OFFICE OF CHIEF ENGINEER  
 SAN FRANCISCO CALIFORNIA

8833 8724016F.DGN  
 CAV68033.TIF

60375  
 33

V-68  
 33  
 V-38  
 33