

Sta Pt 8486+24th
SERRANO
Mile 243rd

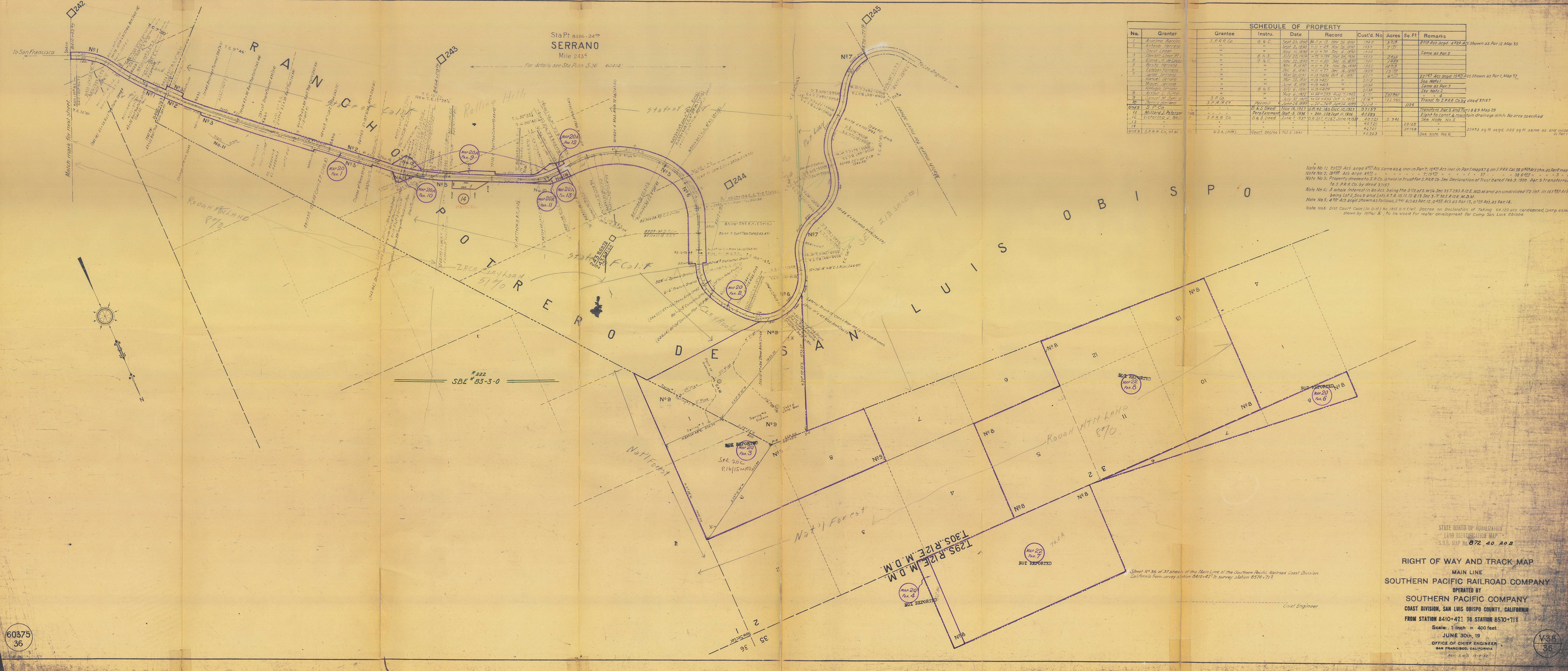
For details see Sta Plan S-36 60414

SCHEDULE OF PROPERTY

No.	Grantor	Grantee	Instru.	Date	Record	Cust'd. No	Acres	Sq. Ft.	Remarks
1	Anselmo Barrios	S.P.R.R. Co.	G & C	Sept 23, 1890	8k 1 p. 7, Nov 26, 1890	1945	3.38	7 1/2	8012 Acq. acq'd. 4584 Ac. shown as Part 1, Map 33
2	Antonio Hernandez	"	"	"	"	"	"	"	"
3	David Logan	"	"	Nov 11, 1890	"	"	"	"	Same as Part 2
4	Davison Lowe P.T.	"	B & S	July 20, 1906	"	"	"	"	"
5	Elena M. de Lugo	"	G & C	Nov 23, 1890	"	"	"	"	"
6	Benito Herrero	"	"	Nov 8, 1890	"	"	"	"	"
7	Esteban Herrera	"	"	Dec 8, 1890	"	"	"	"	"
8	Jose Serrano	"	"	Mar 20, 1891	"	"	"	"	22,143 Ac. 2000, 15,000 Ac. shown as Part 1, Map 37
9	Manuel Serrano	"	"	June 2, 1891	"	"	"	"	See Note 1
10	Kateja Serrano	"	B & S	July 6, 1891	"	"	"	"	See Note 2
11	Samuel M. Tye	S.P.R.R. Co.	"	July 31, 1902	"	"	"	"	Same as Part 7
12	Bernie Herrera	S.P.R.R. Co.	"	June 24, 1893	"	"	"	"	1125
13	S.P.R.R. Co.	"	"	"	"	"	"	"	Transf. to S.P.R.R. Co. by deed 37157
14	Victoria J. Belli	S.P.R.R. Co.	"	"	"	"	"	"	See Note 3
15	U.S.A. (PH)	Court Decree	"	Oct 3, 1941	"	"	"	"	35,993 sq ft. acq'd. 1185 sq ft. same as and inc'd. in Part 10

Note No 1: 23,322 Ac. acq'd. 1871 Ac. same as & incl in Part 7; 1849 Ac. incl in Part 1; map 37 & on S.P.R.R. Cal 38 0992 Ac. shown as Part 1 map 37
 Note No 2: 28,448 Ac. acq'd. 6672
 Note No 3: Property deeded to S.P.R.R. Co. held in trust for S.P.R.R. Co. See Declaration of Trust dated Feb. 9, 1920. Part 9 transferred to S.P.R.R. Co. by deed 37157
 Note No 4: A whole interest in 80 Ac. being the 5/16 of S. W. 1/4 Sec 35 T. 29 S. R. 12 E. MD. M. and an undivided 1/2 int. in 157,350 Ac.
 Note No 5: 4,788 Ac. acq'd. shown as follows: 2,941 Ac. as Part 12, 0,412 Ac. as Part 15, 0,789 Ac. as Part 14.
 Note No 6: Dist. Court Case (50-0-57) No. 1815 B Civil Decree on Declaration of Taking. 64,120 ac. condemned (perp. estm). shown by letter A. To be used for water development for Camp San Luis Obispo.

SAN LUIS OBISPO



Sheet No 36 of 37 sheets of the Main Line of the Southern Pacific Railroad Coast Division California from survey station 8410+421 to survey station 8570+712

STATE BOARD OF EQUALIZATION
LAND IDENTIFICATION MAP
S.B.E. MAP NO. 872 40 20 B

RIGHT OF WAY AND TRACK MAP
MAIN LINE
SOUTHERN PACIFIC RAILROAD COMPANY
OPERATED BY
SOUTHERN PACIFIC COMPANY
COAST DIVISION, SAN LUIS OBISPO COUNTY, CALIFORNIA
FROM STATION 8410+421 TO STATION 8570+712

Scale: 1 inch = 400 feet
JUNE 30th, 19
OFFICE OF CHIEF ENGINEER
SAN FRANCISCO, CALIFORNIA