

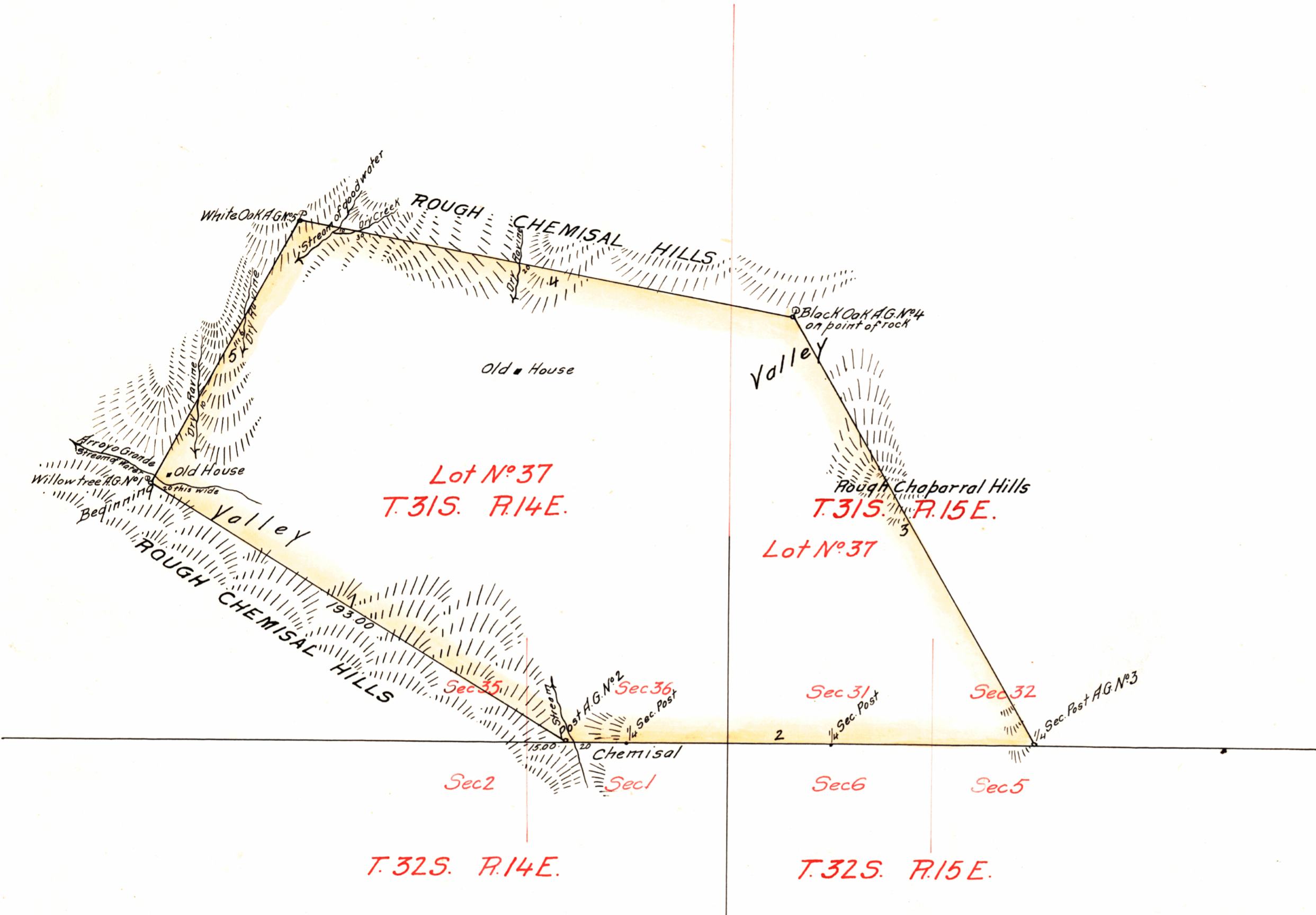
PLAT
of the
RANCHO ARROYO GRANDE
finally confirmed to
FRANCISCO BRANCH
Surveyed under instructions from the
U. S. SURVEYOR GENERAL

by
B.M. Henry Dep Sur.
October 1859

Containing 4437²³/₁₀₀ Acres

Scale 40 Chs. to 1 inch.

Variation 14° 30' East.



Boundaries		
No	Course	Distance
1	S. 59° E	193.00
2	East	185.00
3	N. 30 1/4 W	192.00
4	N. 80 W	198.00
5	S. 29 3/4 W	118.00

DEPARTMENT OF THE INTERIOR,
GENERAL LAND OFFICE,
Washington, D. C., Dec. 27 1860.
I hereby certify that this is a true copy
of the plat of official survey of the lands
to which it relates, on file in this office.

J. W. Mandeville
Recorder, General Land Office.

Note A notice of the approval of this plat of Survey has been published in accordance with the Act of Congress of June 14th 1860 in the Los Angeles Star the first publication thereof being on the 25th of August 1860, and the last on the 15th of September 1860, also in the paper nearest the land, being the Santa Barbara Gazette, the first publication thereof being on the 30th of August 1860, and the last on the 20th of September 1860. This plat has remained in this Office, subject to inspection from the date of the approval thereof.

J. W. Mandeville
U.S. Surv. Genl. Cal.

The field notes of the Rancho Arroyo Grande finally confirmed to Francisco Branch, and from which this Plat has been made out, have been examined and approved and are on file in this Office.
U.S. Surveyor General's Office.
San Francisco California
August 31st 1860.

J. W. Mandeville
U.S. Surv. Genl. Cal.

A full true and correct Copy of the Original Plat on file in this Office
U.S. Surveyor General's Office
San Francisco California
August 24th 1866

L. Dupson
U.S. Sur. Genl. Cal.

