

D. S.  
E. S.

**PLAT**  
of the  
**Atascadero Rancho**  
finally confirmed to  
**Henry Haight**  
Surveyed under instructions from the  
**U.S. Surveyor General**  
by

**Brice M. Henry Dep. Survr.**  
June 1858  
Containing 4,348 <sup>2</sup>/<sub>100</sub> Acres.

Scale 20 Chs to 1 inch  
Var. 19° 30' E.

*Boundaries.*

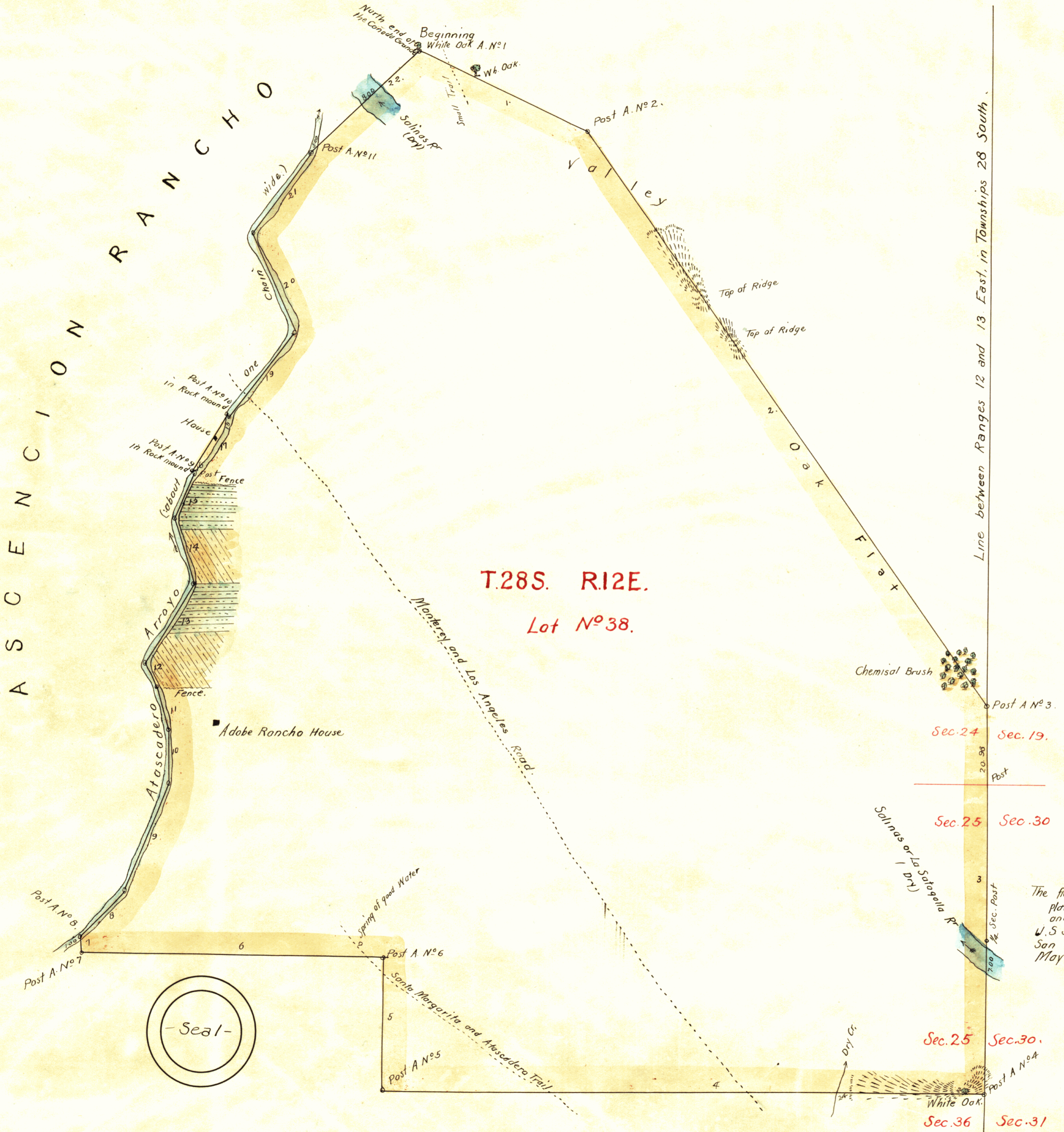
No	Course	Distance
1	S 64 1/2 E	50.00
2	" 36 "	184. "
3	South	100.98
4	West	160 "
5	North	35 "
6	West	80 "
7	North	5 "
8	N 42 1/2 E	16.37
9	" 22 "	31.00
10	North	12 "
11	N 13 1/2 W.	12 "
12	" 33 "	8 "
13	" 33 1/2 E.	25 "
14	" 17 1/2 W	18 "
15	" 20 E	12 "
16	" 45 W.	0.30
17	" 32 1/2 E.	18 "
18	S 45 "	0.20
19	N 39 1/2 "	28.50
20	" 25 1/2 W.	28 "
21	" 35 1/2 E.	26 "
22	" 47 1/2 "	40.50

The field notes of the Atascadero Rancho and from which this plat has been made out, have been examined and approved, and are on file in this Office  
U.S. Surveyor General's Office  
San Francisco California  
May 31 - 1859

DEPARTMENT OF THE INTERIOR,  
GENERAL LAND OFFICE,  
Washington, D. C., Dec. 20, 1910.  
I hereby certify that this is a true copy  
of the plat of official survey of the lands  
to which it relates, on file in this office.

J. W. Mandeville,  
U. S. Survr. Genl. Cal.

*[Signature]*  
Recorder, General Land Office.



**T.28S. R.12E.**  
**Lot No. 38.**