

T.30S. R.13E.

Patent dated October 29, 1867.

A. G.
O-K
TAB.

PLAT

of the Rancho
CORRAL DE PIEDRA
 finally confirmed to
JOSE MARIA VILLAVICENCIO
 Surveyed under instructions from the
U.S. SURVEYOR GENERAL
 by
J. E. Terrell Dep^y Sur^r
 January 1861.
 Containing **30.911¹³⁸** Acres

Scale 80 Chs. to 1 inch

Variation 14° 30' East

T.31S. R.12E.

T.31S. R.13E.

T.31S. R.14E.

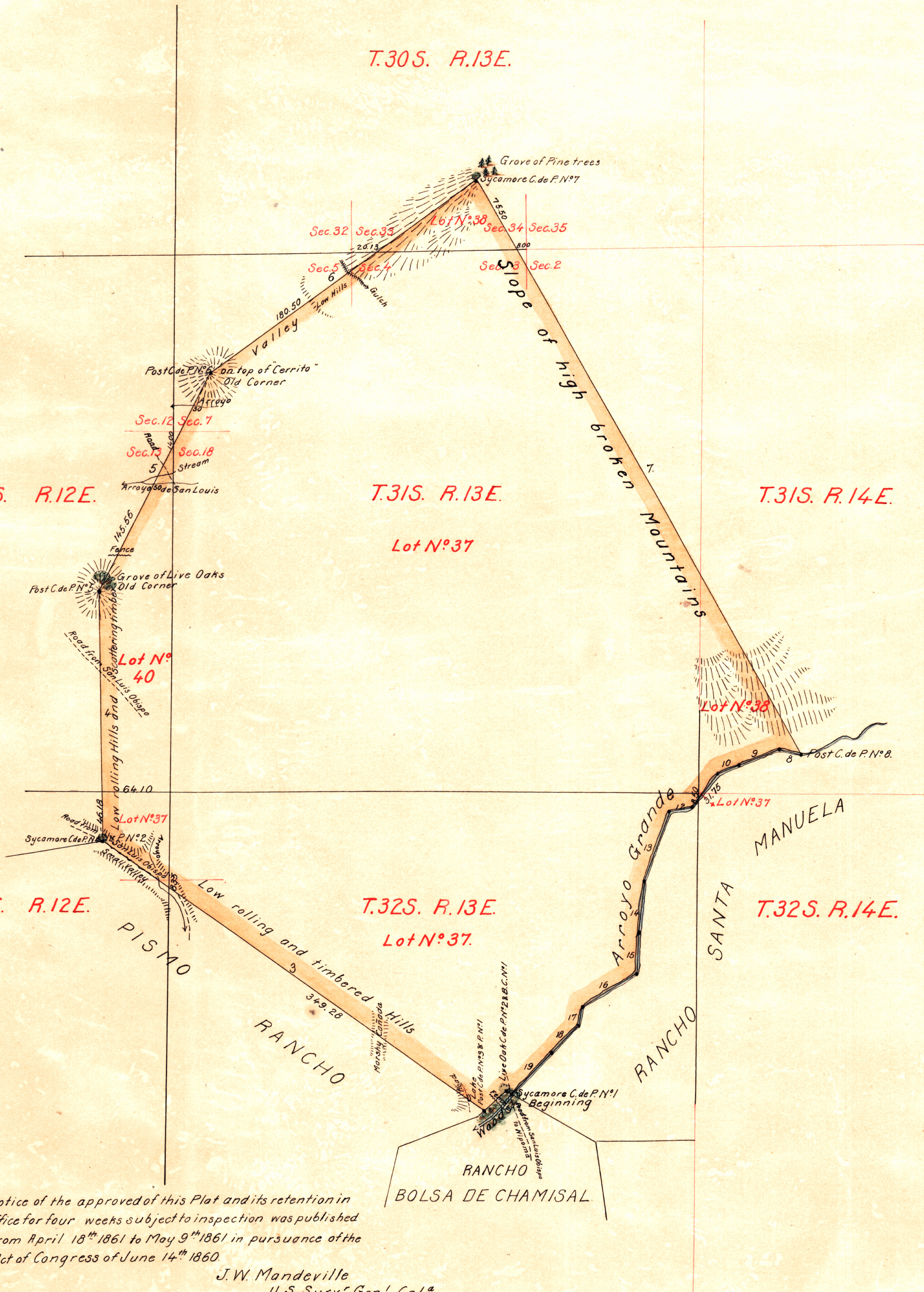
Lot N^o 37

T.32S. R.12E.

T.32S. R.13E.

T.32S. R.14E.

Lot N^o 37



Boundaries		
N ^o	Course	Distance
1	N. 63 1/2° W.	4.70
2	S. 54 1/4° -	25.72
3	N. 56 -	424.86
4	- 1 1/4 -	224.00
5	- 27 3/4 E	222.00
6	- 54 -	294.40
7	S. 30 1/2 -	593.00
8	N. 81 1/2 W	23.00
9	S. 69 1/2 -	38.00
10	- 65 3/4 -	20.00
11	- 36 -	39.00
12	- 87 3/4 -	21.86
13	- 18 1/2 -	63.58
14	- 7 -	50.00
15	- 1 -	35.00
16	- 58 3/4 -	60.00
17	- 11 -	15.00
18	- 42 1/4 -	33.13
19	- 43 3/4 -	54.85

Note: Notice of the approved of this Plat and its retention in Office for four weeks subject to inspection was published from April 18th 1861 to May 9th 1861 in pursuance of the Act of Congress of June 14th 1860.

J. W. Mandeville
 U. S. Surv^r Gen^l Cal^a

A full true and correct Copy of the Original Plat on file in this Office,
 U. S. Surveyor General's Office,
 San Francisco, California
 August 24th 1866.

L. Upson
 U. S. Surv^r Gen^l Cal^a

The field notes of the Rancho "Corral de Piedra" and from which this Plat has been made out, have been examined and approved and are on file in this Office,
 U. S. Surveyor General's Office
 San Francisco California
 March 25th 1861.

J. W. Mandeville
 U. S. Surv^r Gen^l Cal^a

0 411



337

DEPARTMENT OF THE INTERIOR
 GENERAL LAND OFFICE,
 Washington, D. C. Feb. 8, 1909.
 I hereby certify that this is a true copy of the plat of official survey of the lands to which it relates, on file in this office.

[Signature]
 Recorder, General Land Office.