

PLAT
of the
CUYAMA RANCHO
finally confirmed to
Maria Antonia de la Guerra y Lataillade
Surveyed under instructions from the
U.S. SURVEYOR GENERAL
by
Robt R. Harris, dep. sur.
June and July 1872
Containing 22193 ²/₁₀₀ Acres

Scale 80chs to 1inch
Magnetic Var. 14° 30' East

Boundaries		
No	Course	Dist.
1	S. 32 1/4 W	23.65
2	S. 51 1/4 E	799.00
3	S. 64 1/4 E	273.50
4	N. 8 1/2 E	284.25
5	North	113.65
6	N. 74 3/4 W	930.50

DEPARTMENT OF THE INTERIOR,
GENERAL LAND OFFICE,
Washington, D. C., Dec. 20, 1870.
I hereby certify that this is a true copy
of the plat of official survey of the lands
to which it relates, on file in this office.

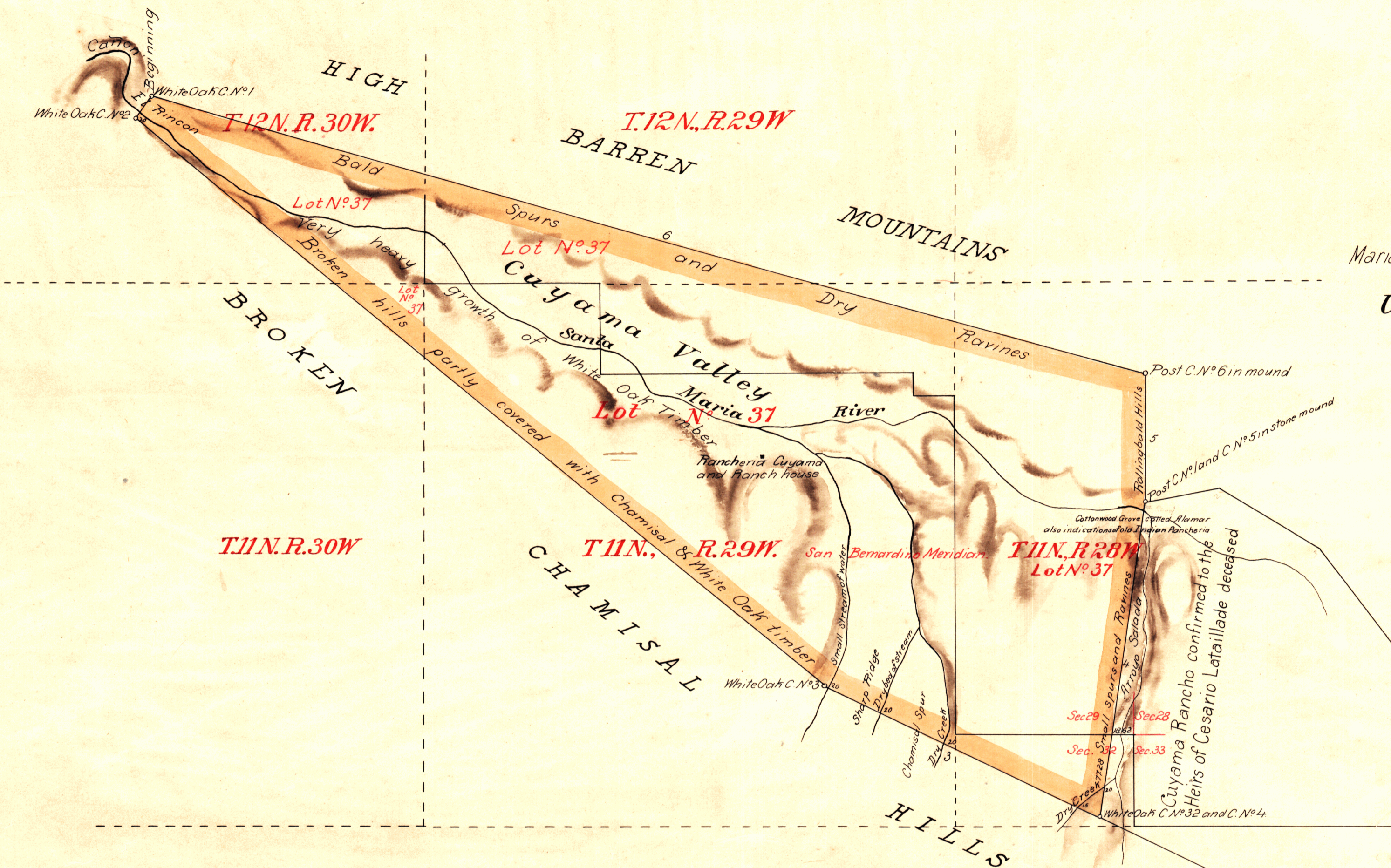
[Signature]
Recorder, General Land Office.

A full true and correct Copy of the Original plat
on file in this office.
U. S. Surveyor General's Office
San Francisco, California.
April 21st 1877

[Signature]
U. S. Survey. Genl. Cal.



Notes in L-8



I hereby certify that in accordance with the Act of Congress of July 1st 1864
this survey and plat were advertised in the "Chronicle," published in the
City and County of San Francisco, for four weeks, the date of the first
publication thereof being the 25th of September 1872; also in the "San-
ta Barbara Press" published in the County of Santa Barbara, for
four weeks, the date of the first publication being the 2nd of October 1872
This plat remained in this office subject to inspection
during ninety days from the date of the first publication

J. P. Hardenbergh
U. S. Surv. Genl. Cal.

The field notes of the Cuyama Rancho finally confirmed to
Maria Antonia de la Guerra y Lataillade, from which this
plat has been made, have been examined and approved
and are on file in this office.
U. S. Surveyor General's Office
San Francisco, California
January 24th 1877

H. G. Rollins
U. S. Surv. Genl. Cal.

Approved in conformity to the decision of
the Hon. Secretary of the Interior, of December 30, 1876.
[Signature]
Acting Commissioner.