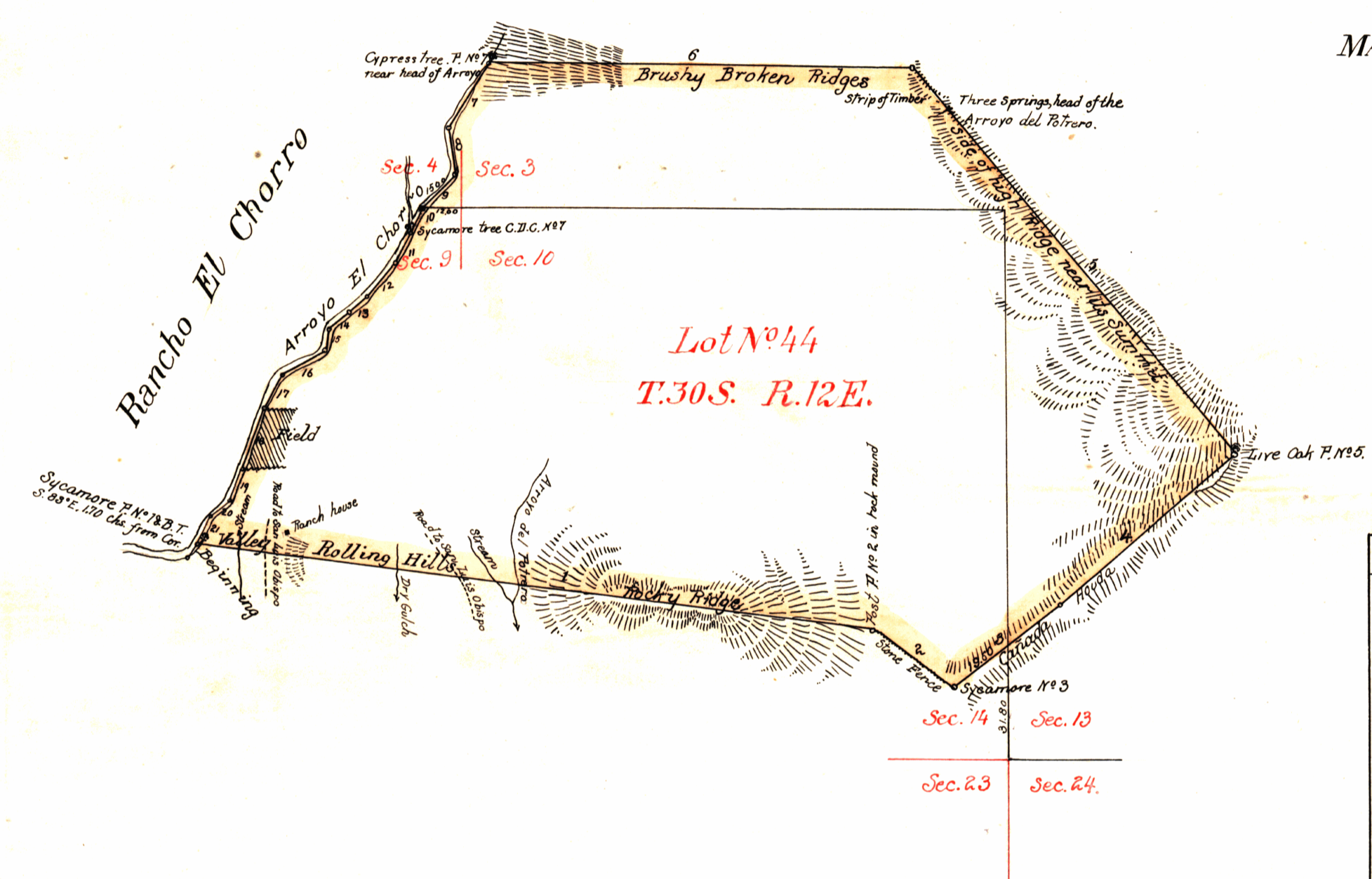


W
Camp

PLAT
of the
RANCHO POTRERO de SAN LUIS OBISPO
finally confirmed to
MARIA CONCEPCION BERONDA
Surveyed under instructions from the
U.S. SURVEYOR GENERAL
by
J. E. Terrell Deputy Sur.
January 1861.
Containing 3,506 ²/₁₀₀ Acres.
Scale 40 chs to 1 inch.
Variation 14° 30' East.



Boundaries.

No	Course	Distance	No	Course	Distance
1	S. 85° E.	204.50	12	S. 40° 50' W.	13.00
2	" 54 1/2 "	29.50	13	" 43 3/4 "	7.00
3	N. 54 1/2 "	40.00	14	N. 47° 40' "	7.44
4	" 50 "	68.06	15	" 18 1/4 "	6.00
5	" 40 W.	145.84	16	" 61° 50' "	17.00
6	" 88 1/2 "	125.90	17	" 29° "	10.08
7	S. 34 1/2 "	22.00	18	" 28° 5' "	20.00
8	" 9 3/4 E.	13.00	19	" 16° "	9.93
9	" 42 1/2 W.	15.00	20	" 52 1/2 "	7.40
10	" 25 1/4 "	8.55	21	" 27 "	8.84
11	" 28 "	7.90			
		680.25			106.69
					680.25
Aggregate of Exterior boundaries 786.94 = 9 M ² 66 chs 94 lts.					

Note. Notice of the approval of the Plat and its retention in Office for four weeks subject to inspection was published from the 10th day of April 1861 to the 9th of May 1861 in pursuance of the Act of Congress of June 14th 1860.

J. W. Manderille
U.S. Surr^r Gen^l Cal^a

The field notes of the Rancho Potrero de San Luis Obispo, and from which this Plat has been made out, have been examined and approved and are on file in this Office.
U.S. Surveyor General's Office
San Francisco, California
April 9th 1861.

J. W. Manderille
U.S. Surr^r Gen^l Cal^a

A full, true and correct copy of the Original Plat on file in this Office.
U.S. Surveyor General's Office
San Francisco, California
November 9th 1869.

Sherman Day
U.S. Surr^r Gen^l Cal^a

DEPARTMENT OF THE INTERIOR,
GENERAL LAND OFFICE,
Washington, D. C., May 23, 1910.
I hereby certify that this is a true copy of the plat of official survey of the lands to which it relates, on file in this office.

[Signature]
Recorder, General Land Office.

Notes F-16

329

0 403