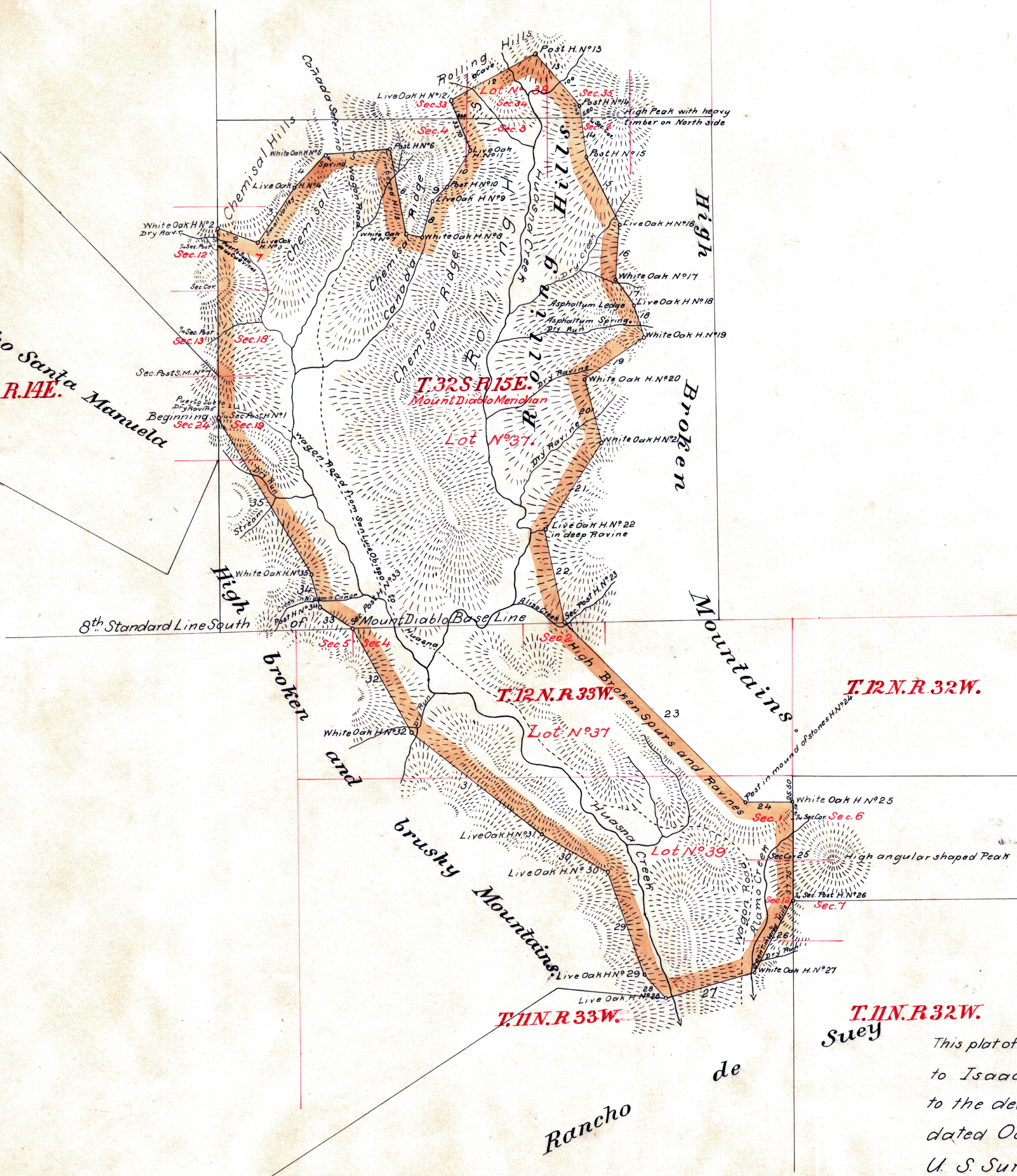


T.31S.R.15E.

Rancho Santa Manuela
T.32S.R.14E.



PLAT

of the

RANCHO HUASNA

finally confirmed to

ISAAC J. SPARKS.

Surveyed under instructions from the

U.S. SURVEYOR GENERAL.

by

R. R. Harris, dep. Sur.

August 1872 and July 1873.

Containing 22,152 ⁹⁹/₁₀₀ Acres.

Scale 80chs to 1inch.

Variation 14°40' East

Boundaries.					
No	Course	Dist.	No	Course	Dist.
1	North	180.00	19	S. 57 1/2° W.	70.80
2	S. 70 1/4° E.	42.50	20	S. 15° E.	61.65
3	N. 34° E.	60.80	21	S. 34 1/2° W.	99.00
4	N. 44 1/2° E.	42.60	22	S. 12° E.	90.60
5	N. 85° E.	66.00	23	S. 45 1/2° E.	244.62
6	S. 9 1/4° E.	83.25	24	East	44.60
7	S. 76° E.	15.00	25	South	92.25
8	N. 13 1/4° E.	36.00	26	S. 28° W.	79.45
9	N. 50 1/4° E.	21.00	27	S. 75 1/4° W.	88.00
10	N. 32 1/2° E.	42.25	28	N. 42 1/4° W.	30.00
11	N. 27 1/4° W.	51.17	29	N. 20 1/4° W.	103.40
12	N. 62 1/2° E.	93.40	30	N. 60 1/2° W.	75.80
13	S. 44 1/2° E.	66.45	31	N. 52 1/4° W.	157.75
14	S. 6 1/4° E.	48.50	32	N. 28 1/4° W.	114.60
15	S. 26 1/4° E.	74.40	33	N. 55 1/4° W.	38.35
16	S. 6 1/4° W.	48.00	34	N. 14° W.	31.00
17	S. 33 1/2° E.	30.20	35	N. 30 1/4° W.	176.20
18	S. 20° E.	33.80	-	-	-

DEPARTMENT OF THE INTERIOR,
GENERAL LAND OFFICE,
Washington, D. C., Dec. 20, 1878.
I hereby certify that this is a true copy
of the plat of official survey of the lands
to which it relates, on file in this office.

R. R. Harris
Recorder General Land Office.

T.11N.R.32W.
Suey

This plat of the Rancho Huasna finally confirmed to Isaac J. Sparks, is hereby approved as conforming to the decision of the Hon. Acting Secretary of the Interior dated October 24 th 1878
U. S. Surveyor General's Office.
San Francisco, California.
December 2nd 1878

Approved Jan. 23, 1879
J. A. Williamson.
Commissioner of the
General Land Office.

Patent dated Jan. 23, 1879



Theo. Wagner

U. S. Surv. Gen'l. Cal.

0 414

340

Notes B-29
Cor. 11 to 13 and 23 to 25
only.