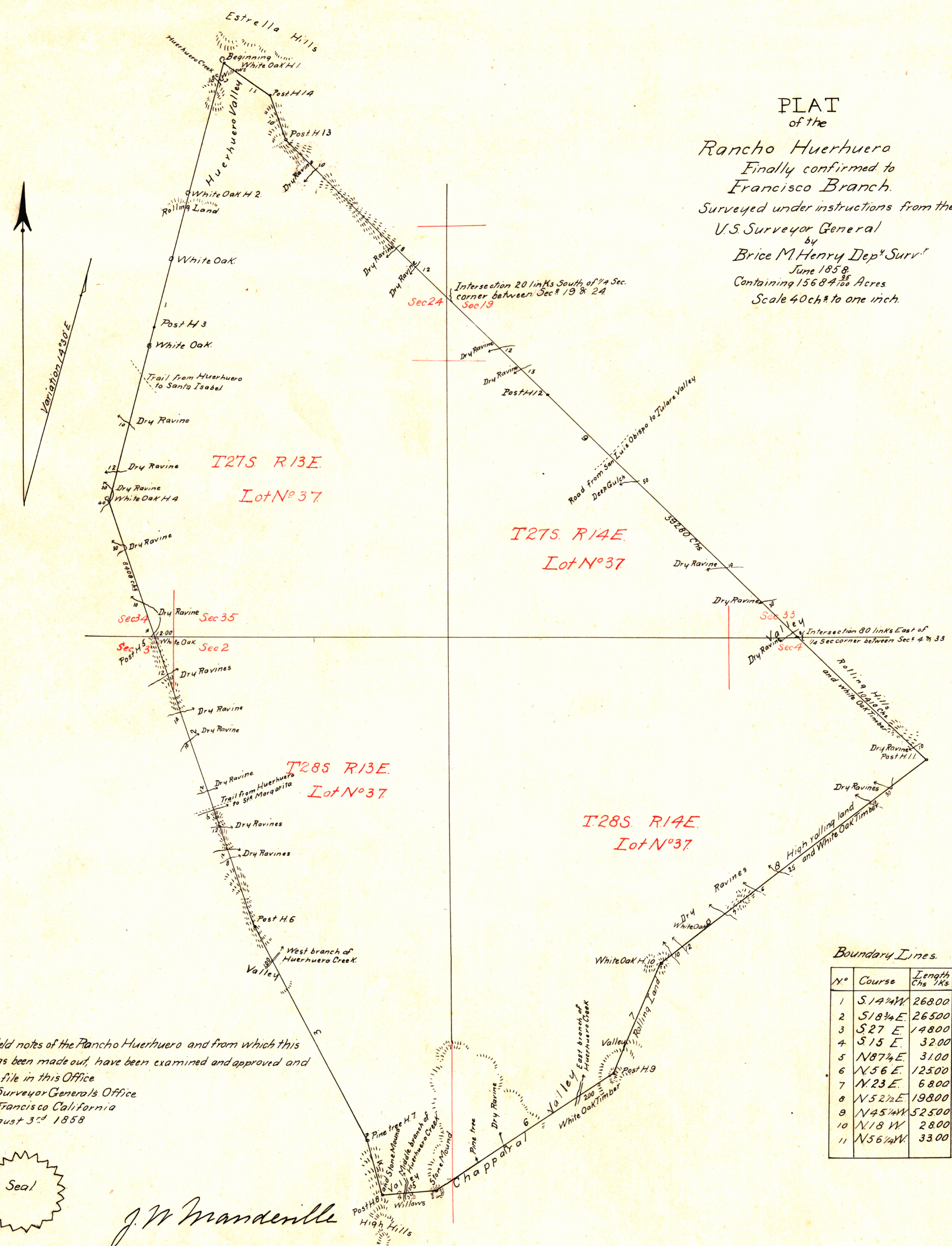


L.P.L.
D.K. T.A.B.

PLAT
of the
Rancho Huertuero
Finally confirmed to
Francisco Branch.
Surveyed under instructions from the
U.S. Surveyor General
by
Brice M. Henry Dep^y Surv^r
June 1858
Containing 15684.25 Acres
Scale 40 chs to one inch.



Boundary Lines.

N°	Course	Length Chs & Lks
1	S 14 1/4 W	26800
2	S 18 3/4 E	26500
3	S 27 E	14800
4	S 15 E	3200
5	N 87 1/4 E	3100
6	N 56 E	12500
7	N 23 E	6800
8	N 52 1/2 E	19800
9	N 45 1/4 W	52500
10	N 18 W	2800
11	N 56 1/4 W	3300

The field notes of the Rancho Huertuero and from which this Map has been made out, have been examined and approved and are on file in this Office
U.S. Surveyor General's Office
San Francisco California
August 3^d 1858



J. N. Manderville
U.S. Surv Gen Cal

DEPARTMENT OF THE INTERIOR,
GENERAL LAND OFFICE,
Washington, D. C. Aug. 19, 1908.
I hereby certify that this is a true copy
of the plat of official survey of the lands
to which it relates, on file in this office.

Recorder, General Land Office.

0 390