

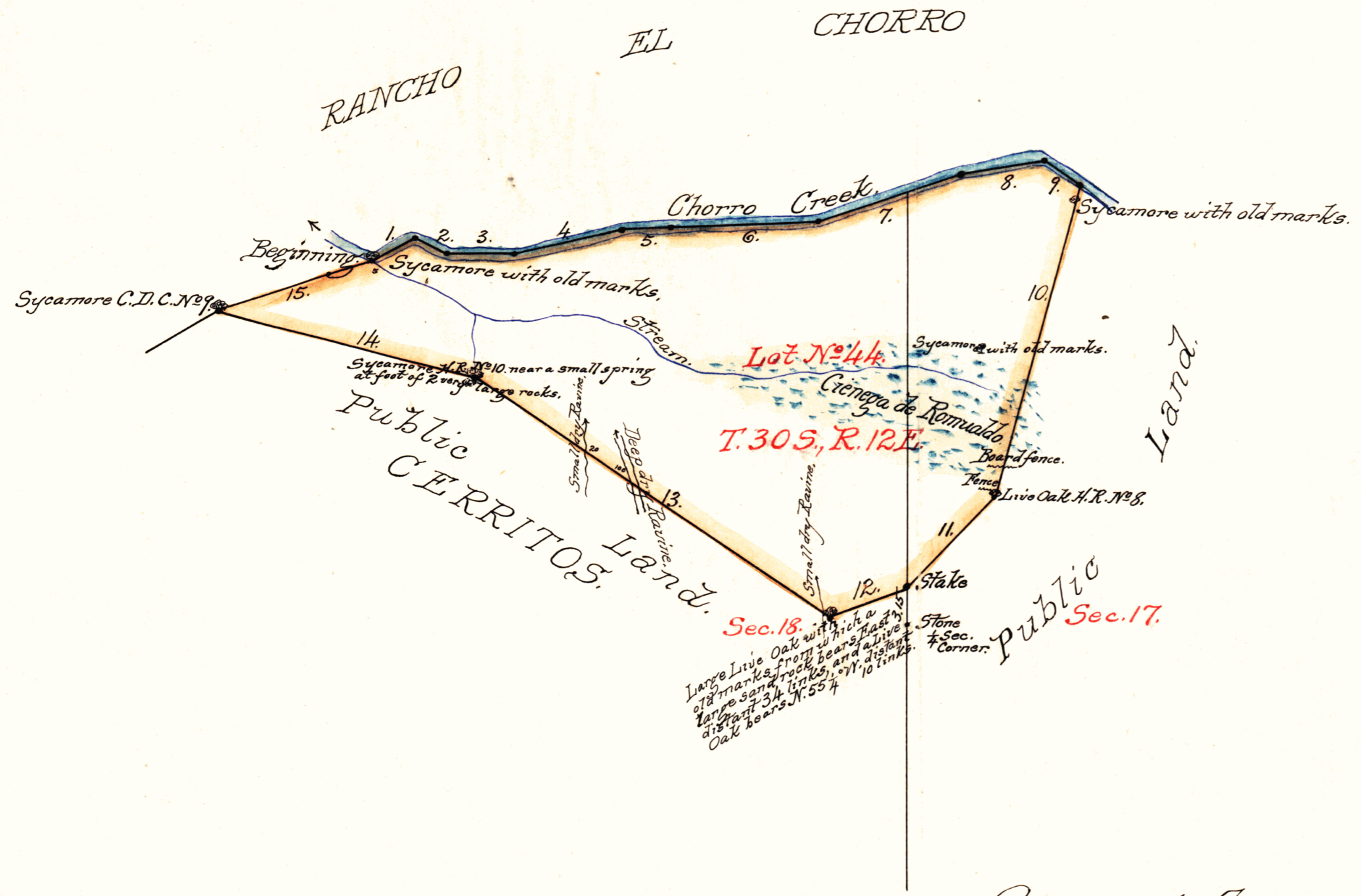
J. M. P.

PLAT

of the
HUERTA DE ROMUALDO OR EL CHORRO,
finally confirmed

JOHN WILSON,
Surveyed under instructions from the
U.S. SURVEYOR GENERAL,
by
A. Leon Cervantes, Dep. Sur.
November 1869.
Containing 117^{1/2} Acres.

Scale 100ths to 1 inch.
Magnetic Variation 14^{1/2} East.



Boundaries.		
No	Course.	Distance
1.	N. 60° E.	3.72
2.	S. 64 1/2° E.	3.00
3.	S. 89 1/2° E.	5.65
4.	N. 75 20° E.	8.32
5.	N. 87 1/2° E.	3.84
6.	N. 87 1/2° E.	11.64
7.	N. 71° E.	11.67
8.	N. 80° 40' E.	6.60
9.	S. 54° 50' E.	3.25
10.	S. 14 1/2° W.	25.50
11.	S. 42 1/2° W.	10.00
12.	S. 69 1/4° W.	6.50
13.	N. 55 1/4° W.	33.60
14.	N. 75 1/4° W.	20.66
15.	N. 72° E.	12.90

Approved April 13, 1871.
Willis Drummond
Commissioner of the General Land Office.

Note: I hereby certify, that this Survey and Plat were advertised in accordance with the Act of Congress of July 1st, 1864 in the "Alta California" published in the City and County of San Francisco for four weeks; the date of the first publication being the 3rd of March 1870, also in the "San Luis Obispo Tribune" published in the County of San Luis Obispo, for four weeks, the date of the first publication being the 5th of March 1870. This plat remained in this Office subject to inspection during ninety days from the date of the first publication.

The field notes of the Huerta de Romualdo or El Chorro, finally confirmed to John Wilson, from which this Plat has been made, have been examined and approved, and are on file in this Office, U.S. Surveyor General's Office, San Francisco, California, June 30th, 1870.

Sherman Day
U.S. Surv. Gen. Cal.

0 404



DEPARTMENT OF THE INTERIOR
GENERAL LAND OFFICE,
Washington, D. C., May 25, 1910.
I hereby certify that this is a true copy of the plat of official survey of the lands to which it relates, on file in this office.

Sherman Day
U.S. Surv. Gen. Cal.

Notes in M-24

330

Recorder, General Land Office.