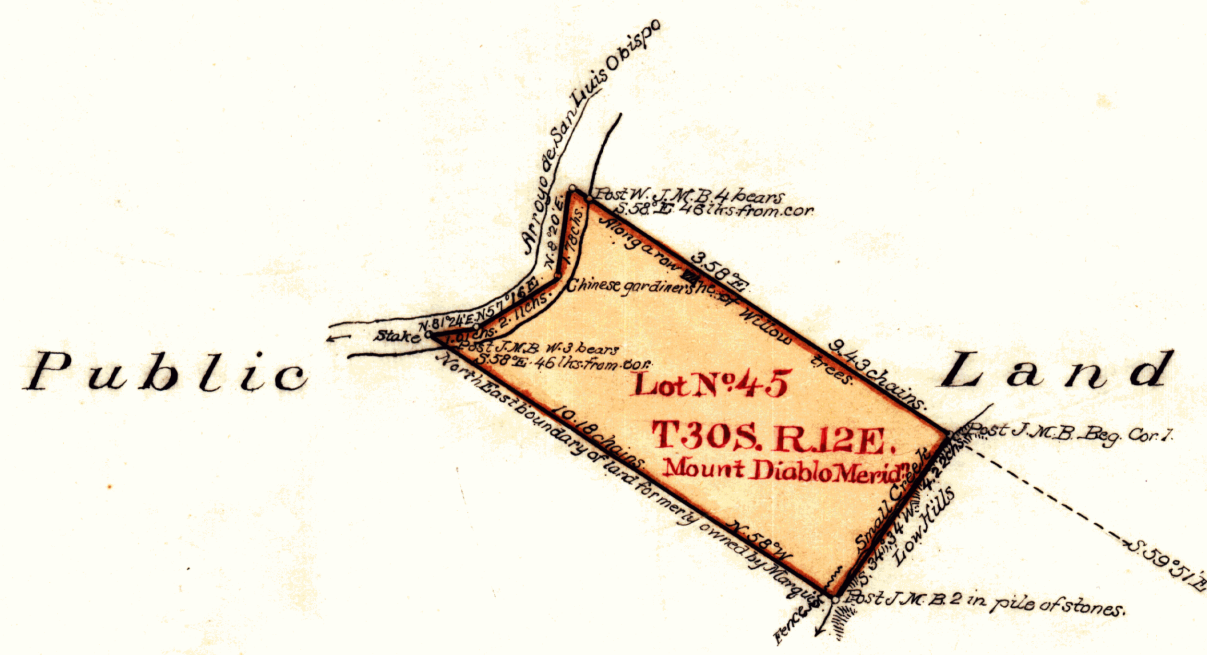


P.S.J.
E.M.P.



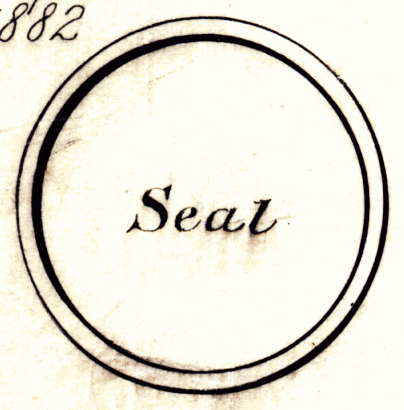
PLAT
of the
LOT IN SAN LUIS OBISPO
finally confirmed to
JOSE M. BONILLA.
Surveyed under instructions from the
U.S. SURVEYOR GENERAL.
By
Frank Reade U.S. Dep. Surv.
February 1882
containing $3\frac{85}{100}$ Acres.
Scale 4 chains to 1 inch.
Magnetic Variation 15° 30' East

I hereby certify that in conformity with the provisions of the Act of Congress approved July 1st 1864, this survey and plat was advertised in the "San Francisco Chronicle" published in the City and County of San Francisco, for four weeks, the date of the first publication thereof being the 22d. of April, 1882; also in the "San Luis Obispo Tribune", published in the County of San Luis Obispo for four weeks, the date of the first publication thereof being the 29th of April 1882, This plat remained in this office, subject to inspection during ninety days from the date of the first publication.
July 31, 1882.
Theo. Wagner
U.S. Sur. Genl. Cal.

The field notes of the survey of the Lot in San Luis Obispo finally confirmed to Jose M. Bonilla, from which this plat has been made, have been examined and approved and are on file in this office.
U.S. Surveyor General's Office.
San Francisco, California.
July 31, 1882

Theo. Wagner
U.S. Sur. Genl. Cal.

A full true and correct Copy of the original plat on file in this office.
U.S. Surveyor General's Office
San Francisco, California
August 26th 1882



W. H. Brown
U.S. Sur. Genl. Cal.

DEPARTMENT OF THE INTERIOR,
GENERAL LAND OFFICE,
Washington, D. C., Dec. 27, 1902.
I hereby certify that this is a true copy of the plat of official survey of the lands to which it relates, on file in this office.

W. H. Brown
Recorder, General Land Office.



0 686

593