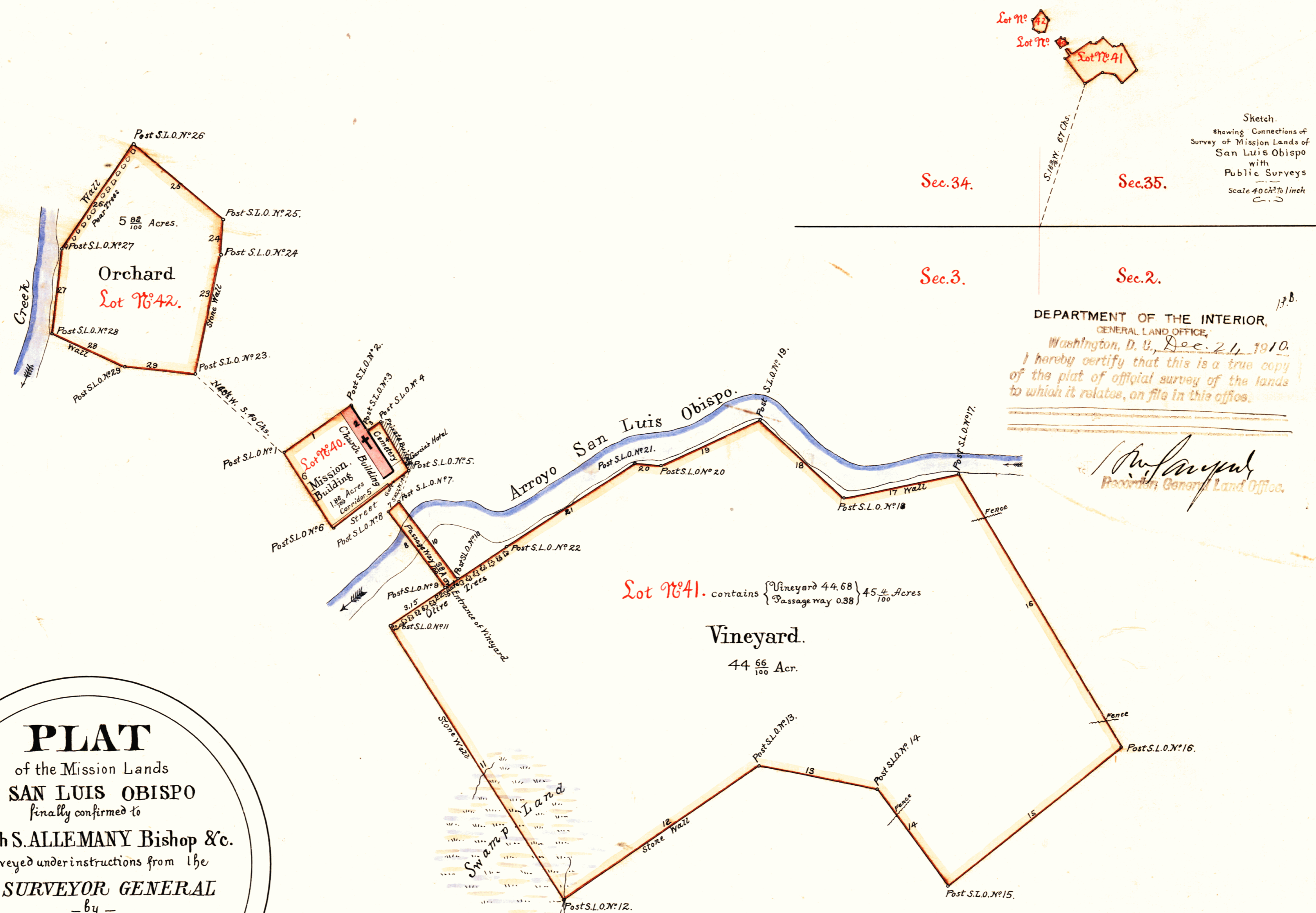


CJM  
Ex. H.S.M.  
OK

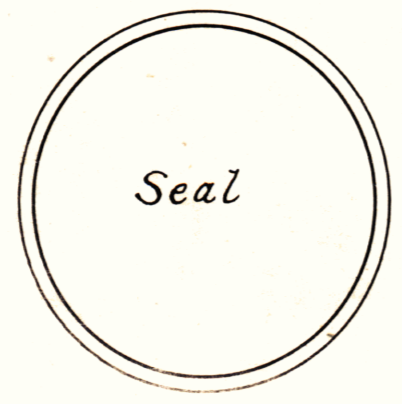
T30S - R12E.



DEPARTMENT OF THE INTERIOR,  
GENERAL LAND OFFICE,  
Washington, D. U., Dec. 21, 1810.  
I hereby certify that this is a true copy  
of the plat of official survey of the lands  
to which it relates, on file in this office.

*J. P. ...*  
Register, General Land Office.

**PLAT**  
of the Mission Lands  
of SAN LUIS OBISPO  
finally confirmed to  
**Joseph S. ALLEMANY Bishop & Co.**  
Surveyed under instructions from the  
**U.S. SURVEYOR GENERAL**  
- by -  
**Brice M. Henry Dep. Sur.**  
August 20<sup>th</sup> 1858.  
Containing **52 72/100** Acres.  
Scale 4 Chs. to 1 inch.



Lot 7641. contains { Vineyard 44.68 } 45 66/100 Acres  
{ Passage way 0.88 }

The field notes of the "Mission Lands of San Luis Obispo",  
and from which this Plat has been made out, have been  
examined and approved and are on file in this Office.  
U.S. Surveyor General's Office  
San Francisco California  
May 3<sup>rd</sup> 1859.

Boundaries  
of Mission Buildings & Cemetery

No.	Course	Dist.
1	N. 55° E	3.95
2	S. 33 1/4 "	1.42
3	N. 55 "	0.70
4	S. 32 1/2 "	2.76
5	S. 57 3/4 W	4.65
6	N. 32 1/2 "	4.25

Passage Way

7	S. 50 1/2 W	0.85
8	S. 36 1/2 E	4.40
9	N. 55 "	0.85
10	N. 35 3/4 W	4.55

Vineyard

11	S. 33 E.	15.00
12	N. 56 "	11.00
13	S. 79 "	5.70
14	S. 36 "	5.60
15	N. 52 1/2 "	10.50
16	N. 31 W.	14.75
17	S. 78 "	5.50
18	N. 47 "	5.30
19	S. 67 "	5.30
20	N. 85 "	1.18
20	S. 58 1/2 "	7.00
22	S. 55 "	6.75

Orchard

23	N. 12 3/4 E.	5.60
24	N. 5 1/4 "	1.65
25	N. 50 1/4 W	5.45
26	S. 35 1/4 "	5.85
27	S. 6 1/4 "	4.00
28	S. 65 E	3.60
29	S. 84 "	3.40

0 407

*J. N. Prandwill*  
U. S. Sur. Gen. Cal.