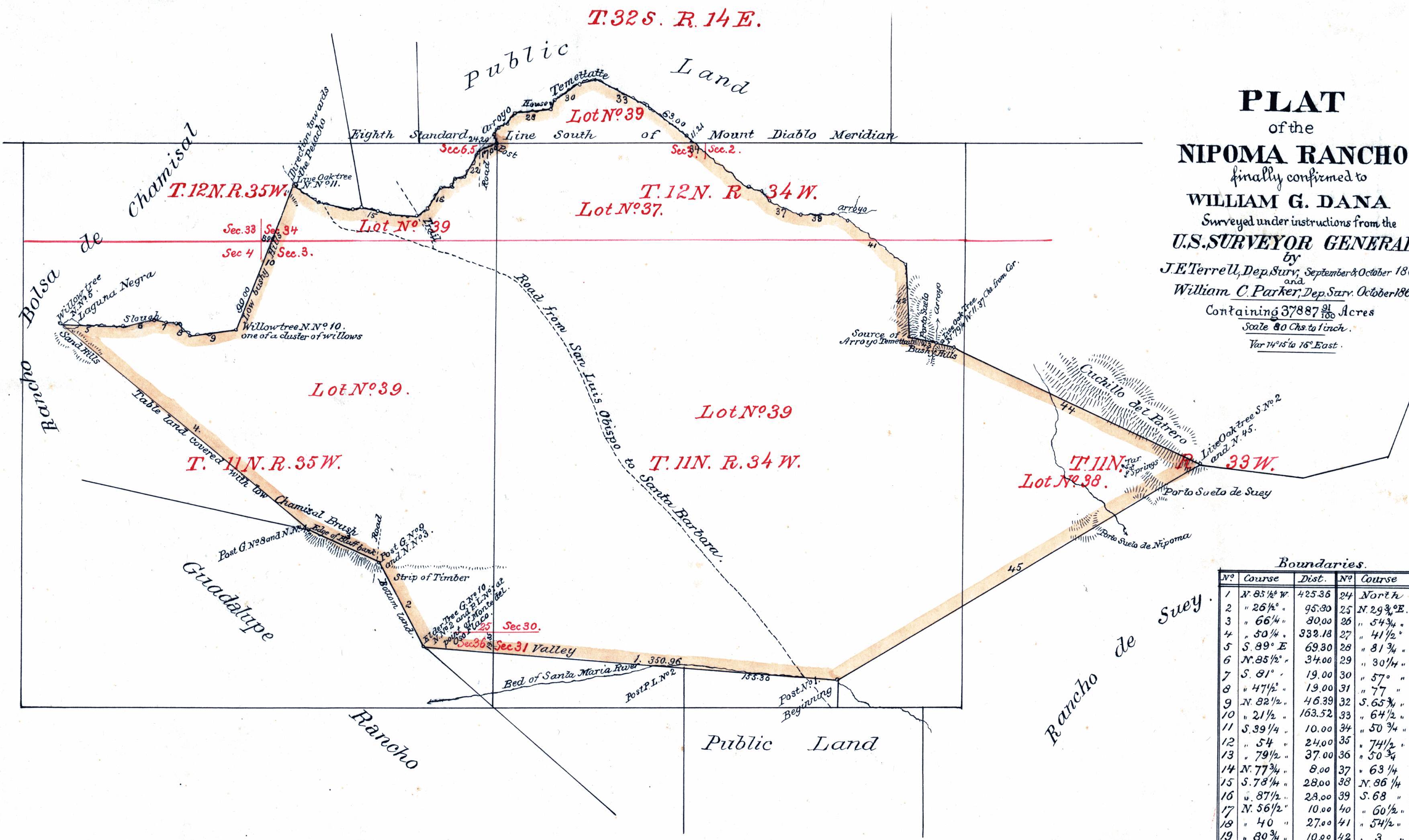


J. U.



PLAT
of the
NIPOMA RANCHO
finally confirmed to
WILLIAM G. DANA
Surveyed under instructions from the
U.S. SURVEYOR GENERAL
by
J. E. Terrell, Dep. Surv., September & October 1860
and
William C. Parker, Dep. Surv., October 1865.
Containing 37887 ⁹¹/₁₀₀ Acres
Scale 80 Chs to 1 inch.
Var 14° 15' to 16° East.

Boundaries.

No	Course	Dist.	No	Course	Dist.
1	N. 85 1/2° W.	425.36	24	N. 07 1/2° E.	7.00
2	" 26 1/2° "	95.80	25	N. 29 3/4° E.	7.00
3	" 66 1/4° "	80.00	26	" 54 3/4° "	11.64
4	" 50 1/4° "	332.18	27	" 41 1/2° "	12.54
5	S. 89° E.	69.80	28	" 81 3/4° "	35.00
6	N. 85 1/2° "	34.00	29	" 30 1/4° "	11.00
7	S. 81° "	19.00	30	" 57° "	80.00
8	" 47 1/2° "	19.00	31	" 7° "	16.61
9	N. 82 1/2° "	46.39	32	S. 65 3/4° "	15.75
10	" 21 1/2° "	163.52	33	" 64 1/2° "	42.81
11	S. 39 1/4° "	10.00	34	" 50 7/4° "	135.72
12	" 54° "	24.00	35	" 74 1/2° "	10.00
13	" 79 1/2° "	37.00	36	" 50 3/4° "	15.00
14	N. 77 3/4° "	8.00	37	" 63 1/4° "	37.00
15	S. 78 1/4° "	28.00	38	N. 86 1/4° "	28.00
16	" 87 1/2° "	28.00	39	S. 68° "	9.41
17	N. 56 1/2° "	10.00	40	" 60 1/2° "	5.58
18	" 40° "	27.00	41	" 54 1/2° "	75.77
19	" 80 3/4° "	10.00	42	" 3° "	76.00
20	" 24° "	8.00	43	" 79 1/4° "	47.37
21	" 75 3/4° "	8.00	44	" 66° "	285.12
22	" 33 1/2° "	31.00	45	" 59° W	441.75
23	" 55 1/2° "	21.00			

Approved July 6th 1868.
Ogden Hoffman
Dist Judge.

The field notes of the Nipoma Rancho from which this Plat has been made, have been examined and approved and are on file in this Office.
U. S. Surveyor General's Office
San Francisco, California.
May 22nd 1868.

L. C. Capson
U. S. Surv. Gen. Cal.

DEPARTMENT OF THE INTERIOR,
GENERAL LAND OFFICE,
Washington, D. C., *May 23, 1868.*
I hereby certify that this is a true copy of the plat of official survey of the lands to which it relates, on file in this office.

0 424

Notes in M- 44

351

