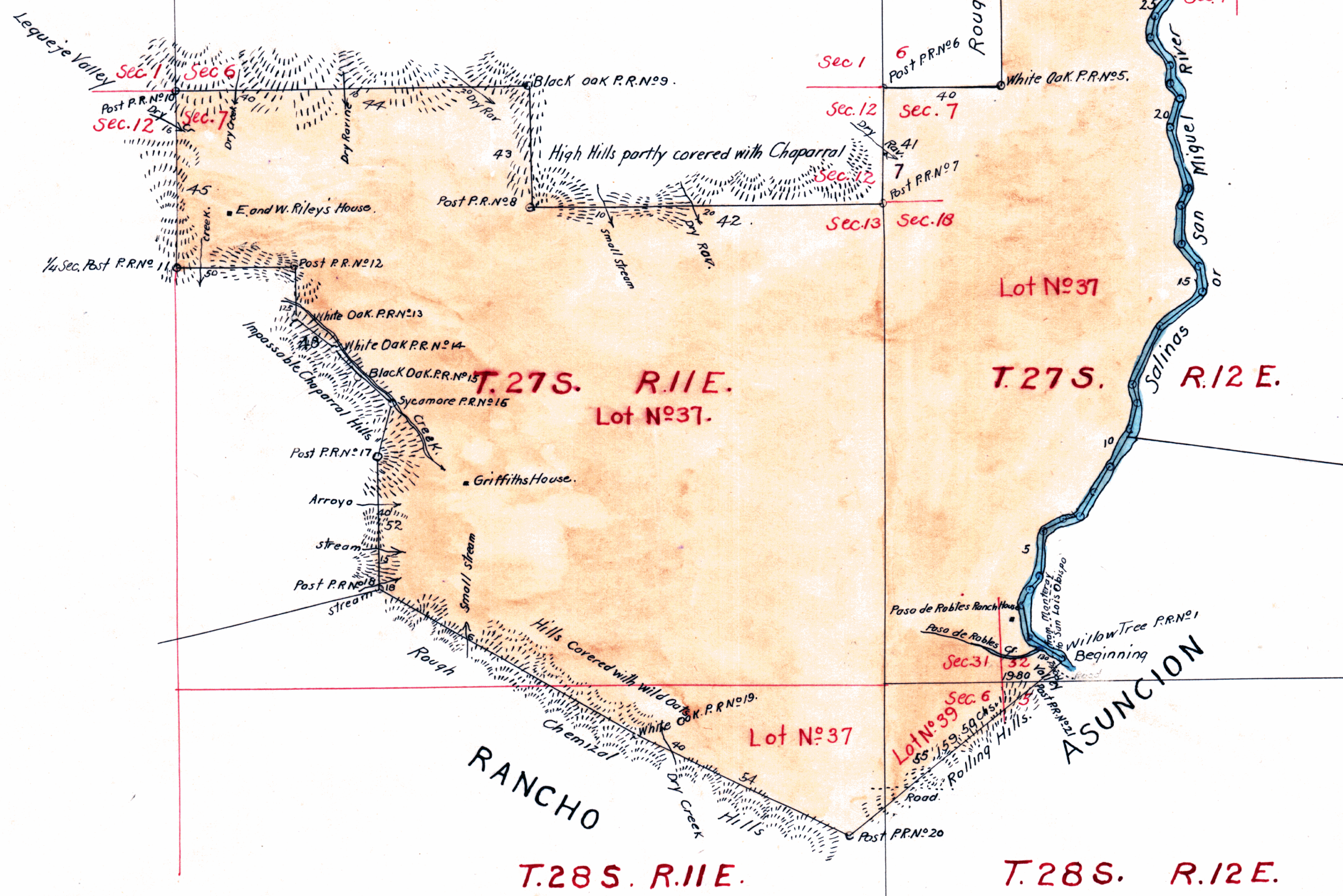


AD-
E.S.

PLAT of the RANCHO PASO DE ROBLES

finally confirmed to
PETRONILLO RIOS.
Surveyed under instructions from the
U.S. SURVEYOR GENERAL
by
Brice M. Henry, Dep. Sur.
August, 1859
Containing 25,993 ¹⁹/₁₀₀ Acres

Scale, 80 Chs to 1 inch
Variation 1° 30' East.



Boundaries.

Nº	Course	Dist.	Nº	Course	Dist.
1	N. 58 3/4 W.	28.00	29	N. 36 E.	17.00
2	N. 7 1/2 W.	23.00	30	N. 13 1/4 E.	20.00
3	N. 26 1/4 E.	10.00	31	N. 42 1/2 W.	20.00
4	N. 34 E.	14.00	32	N. 21 W.	21.00
5	N. 2 1/4 E.	30.00	33	N. 40 1/2 E.	25.00
6	N. 65 1/4 E.	15.00	34	N. 4 E.	29.00
7	N. 79 1/2 E.	12.00	35	N. 10 1/2 W.	42.00
8	N. 36 1/4 E.	19.00	36	N. 35 W.	90.00
9	N. 24 E.	19.00	37	N. 2 W.	3.00
10	N. 32 E.	30.00	38	West	84.20
11	N. 11 1/2 E.	18.00	39	South	335.87
12	N. 16 W.	13.00	40	West	80.00
13	N. 25 1/4 E.	42.00	41	South	80.00
14	N. 52 1/4 E.	38.00	42	West	240.00
15	N. 6 1/2 W.	16.00	43	North	80.00
16	N. 40 W.	20.00	44	West	240.00
17	N. 1 E.	27.00	45	South	120.00
18	N. 20 E.	10.00	46	East	80.00
19	N. 14 1/4 W.	43.00	47	South	35.30
20	N. 15 E.	23.00	48	S. 45 E.	32.00
21	N. 34 1/4 W.	10.00	49	S. 44 E.	27.00
22	N. 1 1/4 E.	13.00	50	S. 49 1/2 E.	27.50
23	N. 44 W.	22.00	51	S. 14 1/2 W.	36.60
24	N. 9 E.	16.00	52	South	69.00
25	N. 45 1/2 E.	20.00	53	S. 60 E.	200.00
26	N. 21 1/2 E.	19.50	54	S. 64 1/4 E.	162.00
27	N. 15 1/2 W.	9.00	55	N. 50 1/2 E.	186.00
28	N. 26 1/2 E.	18.00			

Note: A notice of the approval of this Plat of survey has been published in accordance with the Act of Congress of June 14th 1860 in the "Los Angeles Star," the first publication thereof being on the 25th of August, and the last on the 15th of September 1860, also in the Mens paper nearest the land; being the "Santa Barbara Gazette" the first publication thereof being on the 30th of August, and the last on the 20th of September 1860. This Plat has remained in this Office subject to inspection from the date of the approval thereof.

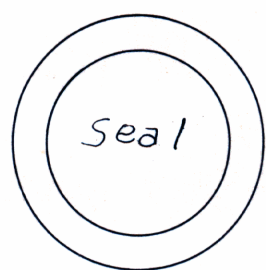
J. W. Mandeville
U. S. Surr. Genl. Cal.

The field notes of the Rancho Paso de Robles from which this Plat has been made have been examined and approved, and are on file in this office.
U. S. Surveyor General's Office
San Francisco, California
July 12th 1860.

J. W. Mandeville
U. S. Surr. Genl. Cal.

A full, true and correct Copy of the original Plat on file in this Office
U. S. Surveyor General's Office
San Francisco, California
January 4th 1862

E. F. Beale
U. S. Surr. Genl. Cal.



0 394 a

DEPARTMENT OF THE INTERIOR,
GENERAL LAND OFFICE,
Washington, D. C., Dec. 27, 1910.
I hereby certify that this is a true copy of the plat of official survey of the lands to which it relates, on file in this office.

[Signature]
Notes in L-44
320