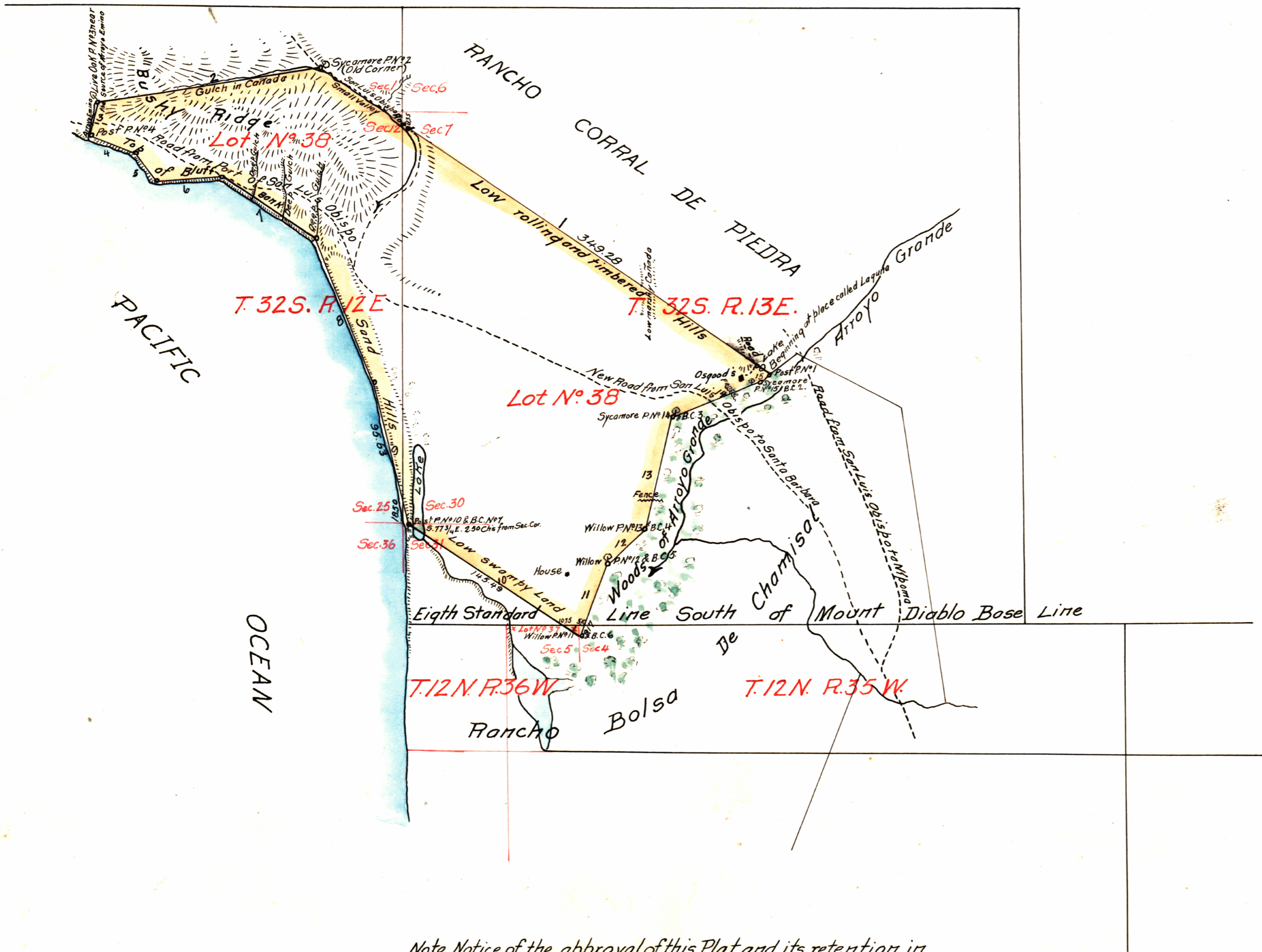


PLAT
of the
PISMO RANCHO
finally confirmed to
ISAAC J. SPARKS
Surveyed under instructions from the
U.S. SURVEYOR GENERAL
by
J. E. Terrell Dep. Sur.
September 1860
Containing 8838⁸⁹/₁₀₀ Acres
Scale 80 Chs. to 1 inch
Variation 14° 30' East

N. J. F.
O. K.
H. G.



Boundaries		
N ^o	Course	Distance
1	N. 56° W	424.86
2	S. 81½ W	176.11
3	S. 8 W	30.50
4	S. 68¾ E.	35.00
5	S. 40¼ E	29.00
6	N. 86½ E	35.00
7	S. 56½ E	83.00
8	S. 22½ E	120.00
9	S. 14 E	114.87
10	S. 57¼ E	161.74
11	N. 21¾ E	57.80
12	N. 50 E	39.00
13	N. 12¼ E	90.34
14	N. 67½ E	75.45
15	N. 34¼ E.	11.00.

Note Notice of the approval of this Plat and its retention in Office for four weeks subject to inspection was published from February 14th to March 7th 1861 in pursuance of the Act of Congress of June 14th 1860
J. W. Mandeville
U.S. Surv. Genl. Cal^a

The field notes of the Pismo Rancho, from which this Plat. has been made out, have been examined and approved and are on file in this Office
U.S. Surveyor General's Office.
San Francisco California
January 29th 1861

J. W. Mandeville
U.S. Surv. Genl. Cal^a

A full true and correct Copy of the Original Plat on file in this Office.
U.S. Surveyor General's Office
San Francisco California
August 24th 1866.

L. Upson.
U.S. Surv. Genl. Cal^a



DEPARTMENT OF THE INTERIOR,
GENERAL LAND OFFICE,
Washington, D. C., Dec. 27, 1910.
I hereby certify that this is a true copy of the plat of official survey of the lands to which it relates, on file in this office.

[Signature]
Recorder, General Land Office.

NOTES 487.14

10 410

336