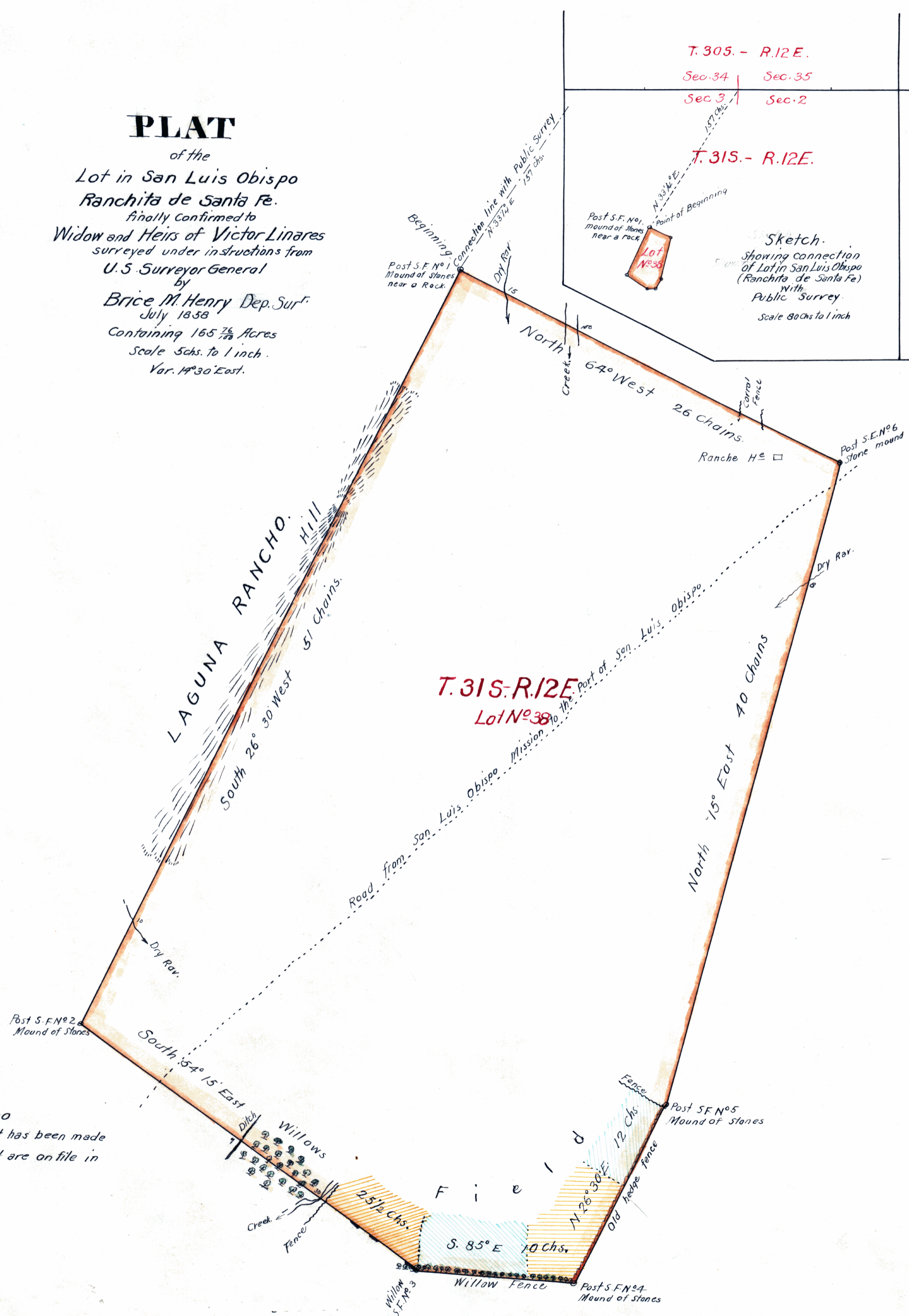
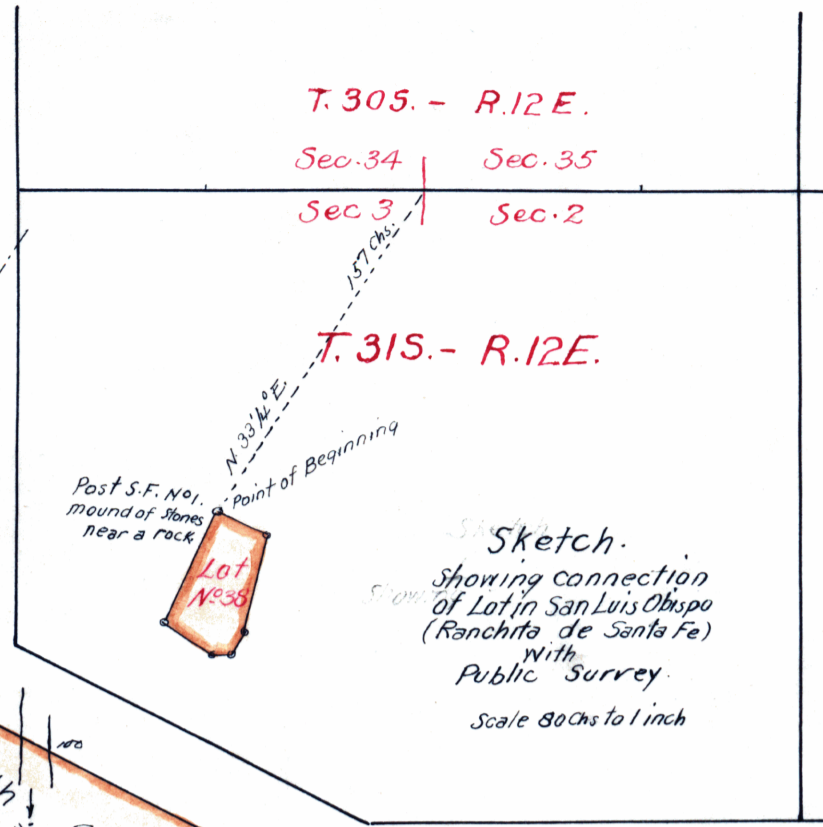


PLAT
of the
Lot in San Luis Obispo
Ranchita de Santa Fe.
Finally Confirmed to
Widow and Heirs of Victor Linares
surveyed under instructions from
U.S. Surveyor General
by
Brice M. Henry Dep. Surf.
July 1858
Containing 165 $\frac{7}{8}$ Acres
Scale Schs. to 1 inch.
Var. 14°30' East.



The field notes of Lot in San Luis Obispo (Ranchita de Sta. Fe) and from which this plat has been made out, have been examined and approved, and are on file in this Office.
U. S. Surveyor General's Office }
San Francisco, California }
May 3rd 1859.

DEPARTMENT OF THE INTERIOR,
GENERAL LAND OFFICE,
Washington, D. C., Dec. 21, 1910.
I hereby certify that this is a true copy
of the plat of official survey of the lands
to which it relates, on file in this office.

[Signature]
Recorder General Land Office.

0 408

502-2 J

334