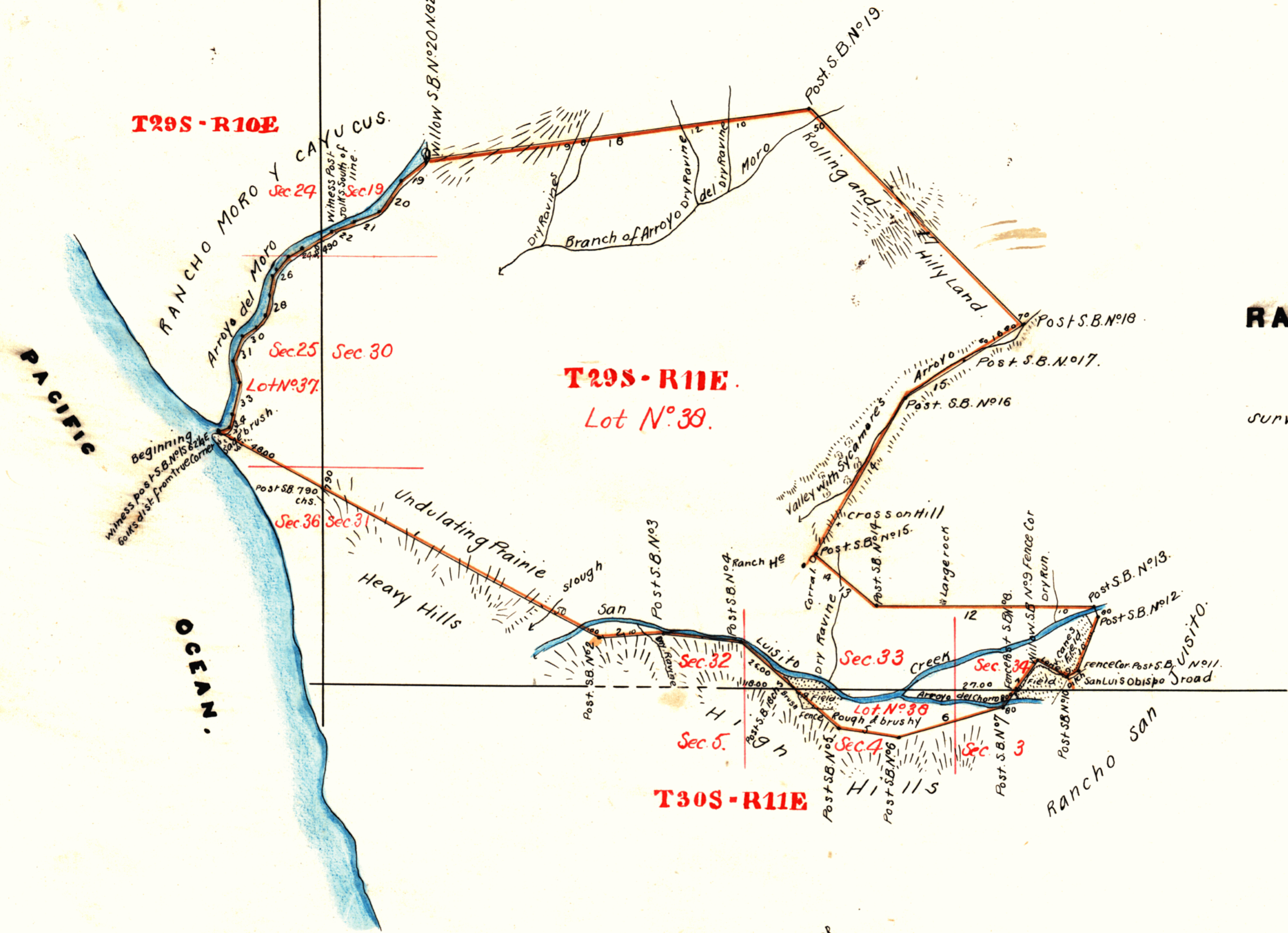


G. J. O-K.  
T.A.B.

Field notes.

N <sup>o</sup>	Course	Distance	N <sup>o</sup>	Course	Distance
1	S. 61 1/4° E	166.00	19	S. 48° W	11.00
2	N. 85° E	24.00	20	S. 37 1/4° W	13.00
3	S. 82° E	30.90	21	S. 63 1/4° W	12.30
4	S. 49 3/4° E	49.00	22	S. 76 1/4° W	7.40
5	S. 81 1/2° E	21.00	23	S. 57 1/4° W	12.70
6	N. 73 1/2° E	42.00	24	S. 68 3/4° W	5.30
7	N. 37 1/4° E	21.00	25	S. 44 1/2° W	7.75
8	S. 64 1/2° E	12.50	26	S. 22 1/2° W	4.72
9	N. 54 1/2° E	5.50	27	S. 12 1/4° W	6.00
10	N. 2° 20' E	21.00	28	S. 18 1/4° W	7.36
11	N. 13 3/4° W	4.45	29	S. 35° W	7.35
12	West	83.50	30	S. 54 3/4° W	4.90
13	N. 50° W	30.00	31	S. 24 1/4° W	10.00
14	N. 30 1/4° E	65.00	32	S. 23 1/2° E	6.30
15	N. 58 3/4° E	30.30	33	S. 12 1/4° W	15.00
16	N. 58 1/2° E	24.00	34	S. 10 1/2° W	5.30
17	N. 45 1/2° W	116.00	35	West	6.30
18	S. 82 1/4° W	147.50			



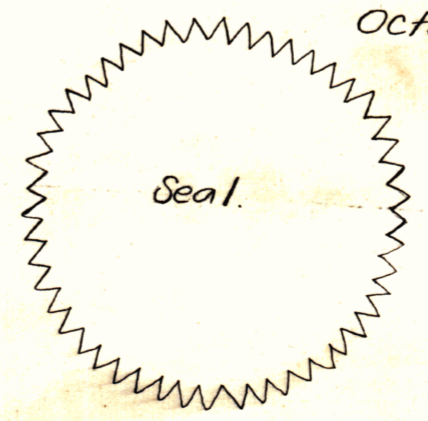
**PLAT**  
of the  
**RANCHO SAN BERNARDO**  
finally confirmed to  
**VINCENTE CANE**  
surveyed under instruction from the  
**U. S. SURVEYOR GENERAL**  
by  
Brice M. Henry Dep. Surv.  
April 1858  
Containing 4,379 <sup>42</sup>/<sub>100</sub> Acres.  
Scale 40 chs to an inch.  
Variation 14° 15' East.

DEPARTMENT OF THE INTERIOR,  
GENERAL LAND OFFICE,  
Washington, D. C., Dec. 2, 1910.  
I hereby certify that this is a true copy  
of the plat of official survey of the lands  
to which it relates, on file in this office.

*Wm. J. ...*  
Recorder, General Land Office.

0 400

The field notes of the Rancho San Bernardo and from which this Plat has  
been made out, have been examined and approved, and are on file in this Office  
U. S. Surveyor General's Office,  
San Francisco, California.  
October 19<sup>th</sup> 1858



*J. W. Brandeville*  
U. S. Surv. Gen. Cal.  
**326**