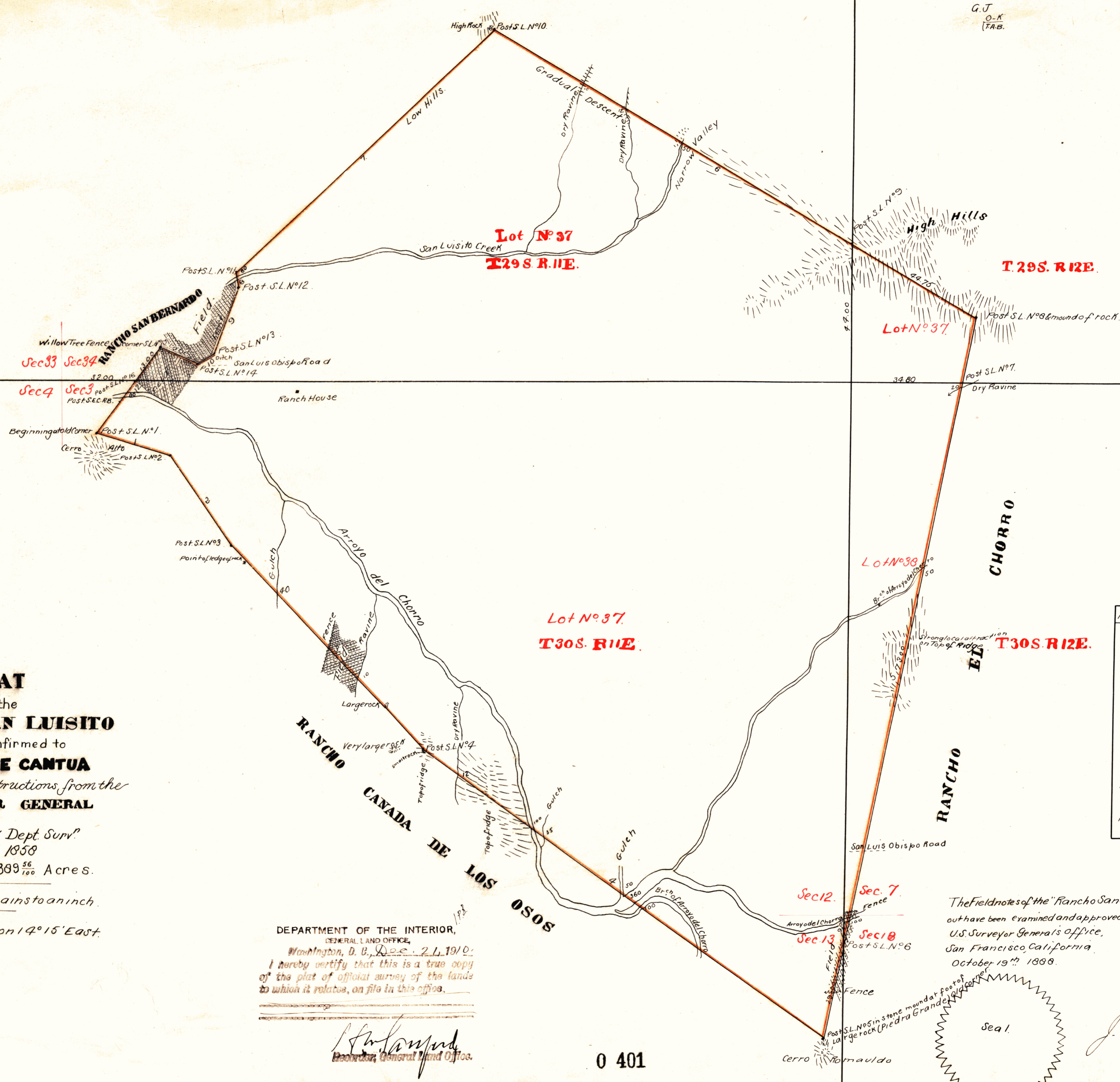


G.J.
O.K.
TAB.



Lot N.º 37
T. 29 S. R. 11 E.

T. 29 S. R. 12 E.

Lot N.º 37
T. 30 S. R. 11 E.

T. 30 S. R. 12 E.

PLAT
of the
RANCHO SAN LUISITO
Finally confirmed to
GUADALUPE CANTUA
Surveyed under Instructions from the
U. S. SURVEYOR GENERAL
by
Brice M. Henry Dept. Surv.^r
March 1858
Containing 4,389 ⁶⁶/₁₀₀ Acres.

Scale 20 Chains to an inch.
Variation 14° 15' East.

Boundaries.

Nº	Course.	Distance - chs. Lns.
1	S 73 1/2° E	24.20
2	S 35 1/2° E	32.50
3	S 49° 20' E	85.00
4	S 55° 05' E	150.00
5	N 11 1/4° E	223.00
6	N 59° 40' W	172.00
7	S 47° W	108.00
8	S 13 3/4° E	4.45
9	S 21° 20' W	21.00
10	S 54 1/2° W	5.50
11	N 67 1/2° W	12.50
12	S 37 1/4° W	33.00

DEPARTMENT OF THE INTERIOR,
GENERAL LAND OFFICE,
Washington, D. C., Dec. 21, 1910.
I hereby certify that this is a true copy
of the plat of official survey of the lands
to which it relates, on file in this office.

J. W. Henderson
Recorder, General Land Office.

The field notes of the Rancho San Luisito and from which this Plat has been made
out have been examined and approved and are on file in this office.
U.S. Surveyor General's office,
San Francisco, California,
October 19th 1888.

J. W. Henderson
U. S. Surv^r Gen^l Ca 19

0 401